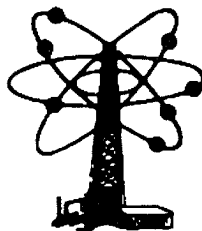


PHONE: 210-496-2466  
FAX: 210-496-9595

3512 PAESANOS PARKWAY  
SUITE 102



**OLSEN ENERGY, INC.**

*Oil & Gas Development*  
SAN ANTONIO, TEXAS 78231

May 15, 2008

**RECEIVED**

**MAY 19 2008**

**HOBBS OCD**

New Mexico Oil Conservation Division  
District I  
1625 N. French Drive  
Hobbs, New Mexico 88240

Attn: Chris Williams

*30-025-02156*

Re: Annular Pressure Charts  
Phillips Lea #4  
Sec 31, T-17-S, R-34-E  
Lea County, New Mexico

Dear Chris,

Attached please find the original charts from the casing pressure recorder installed on the subject well. The annular pressure remains at zero for the month of April 2008. Please let me know if you need any additional information.

Sincerely,

OLSEN ENERGY, INC.

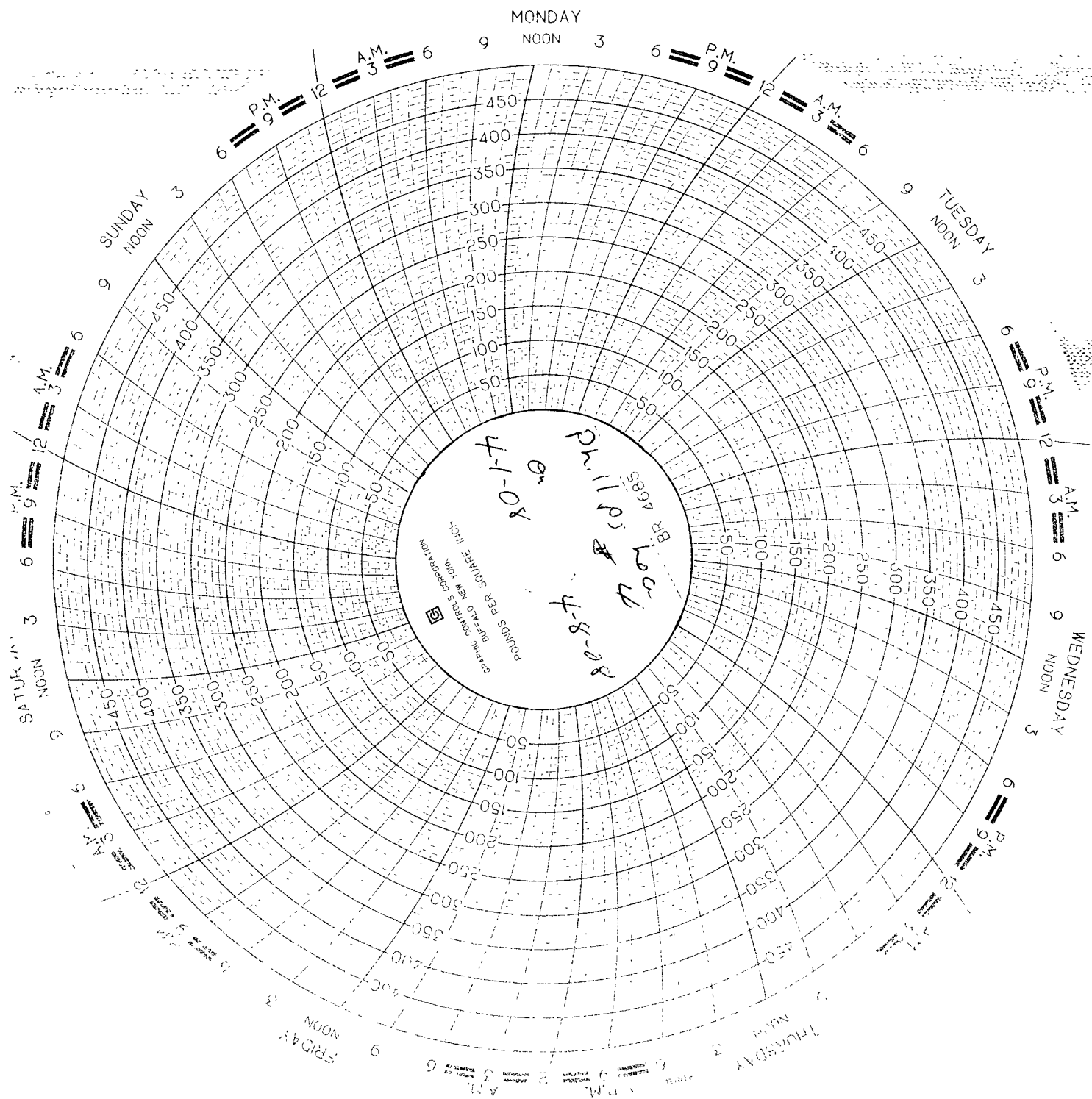
Donna Bice  
Office Manager

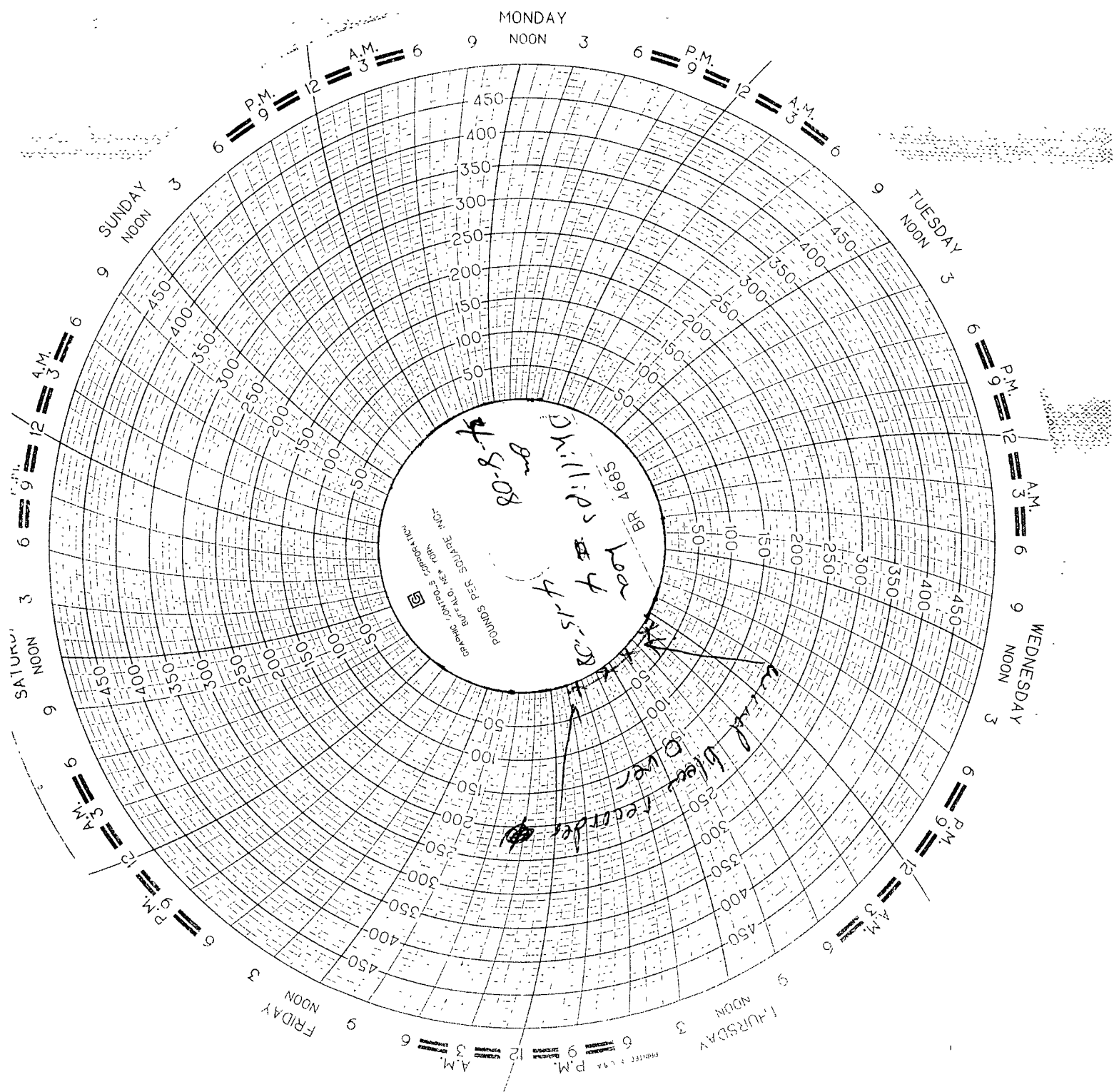
*OK -*

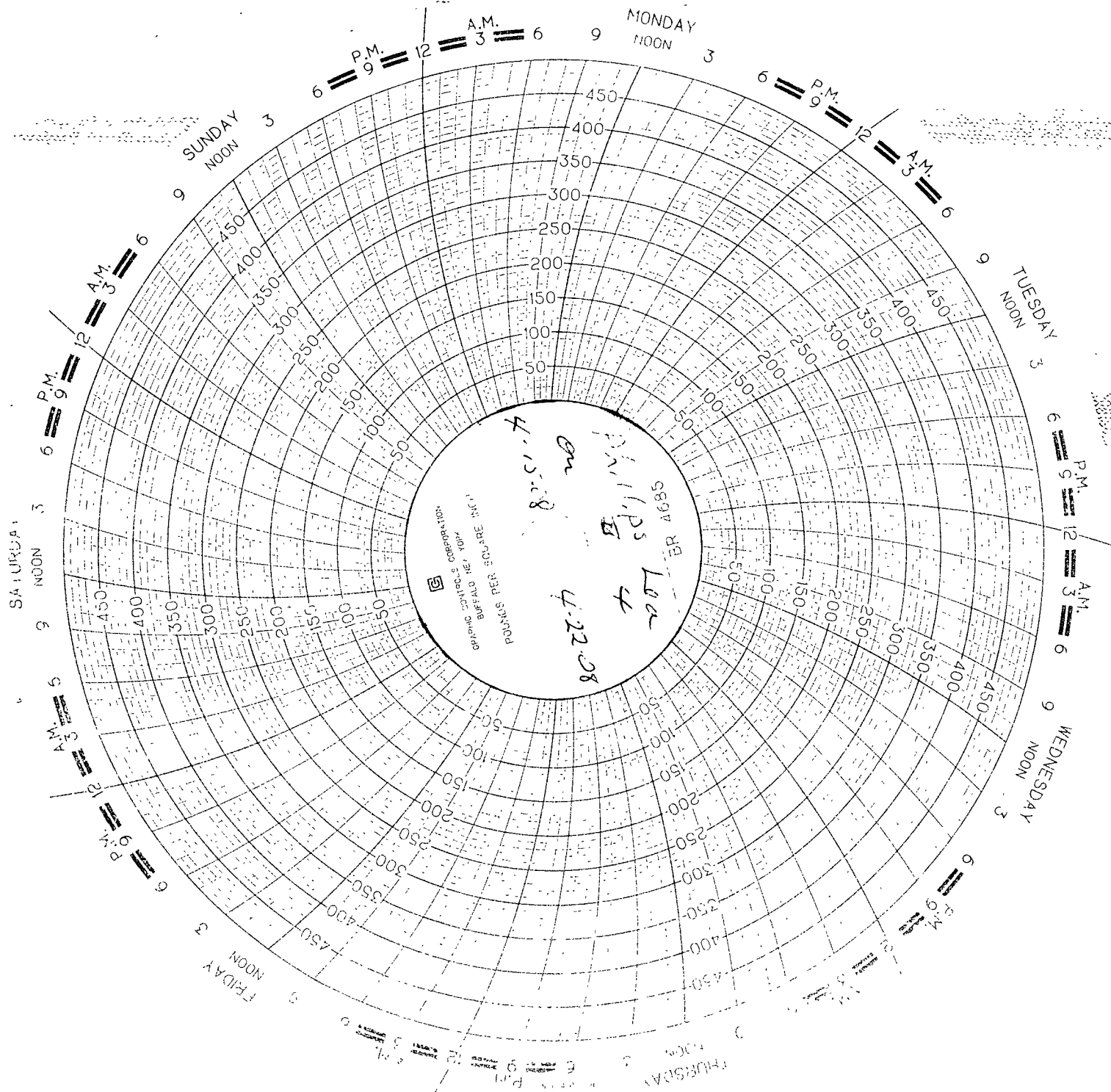
*Chris Williams*

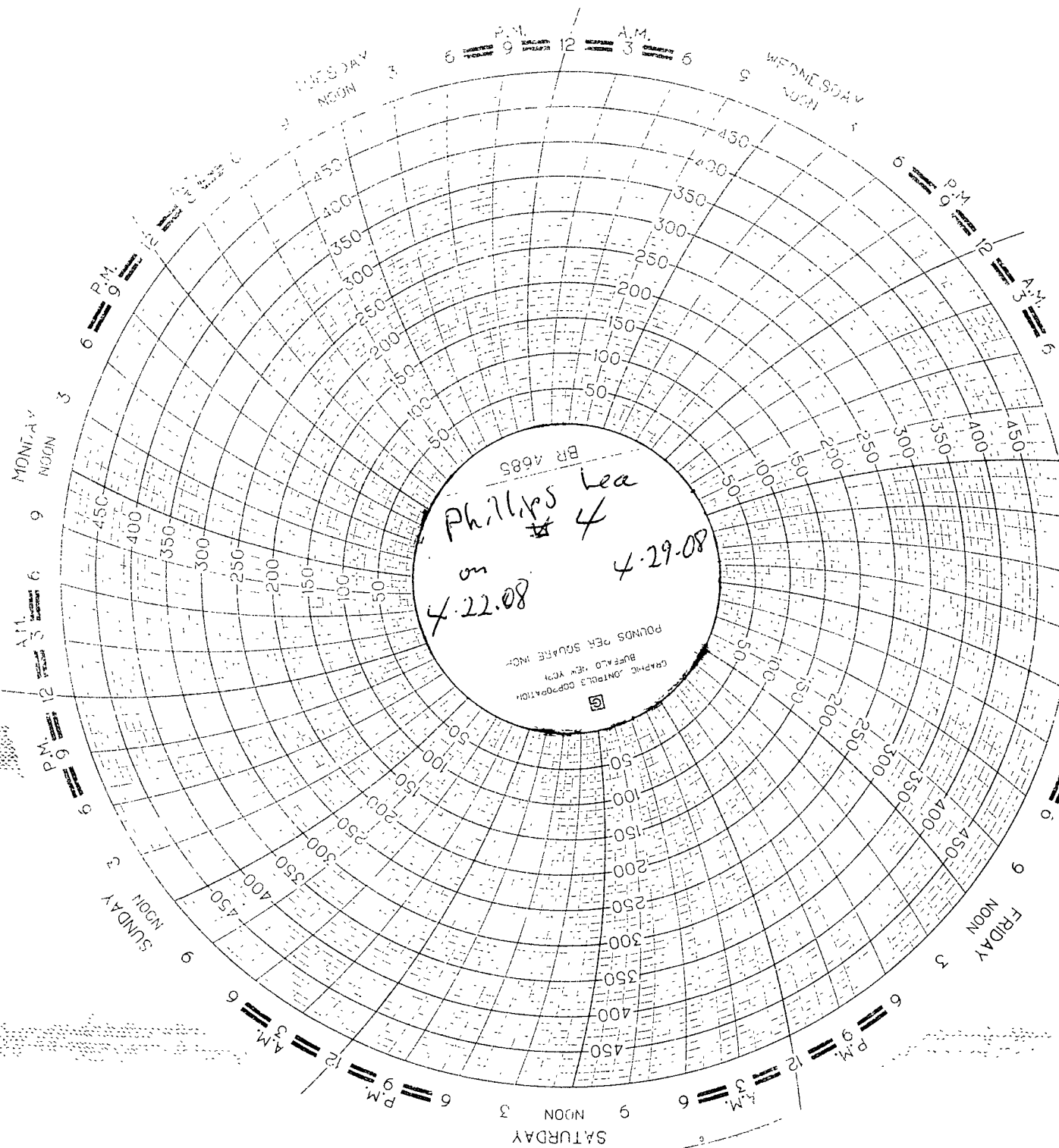
*6/5/08*

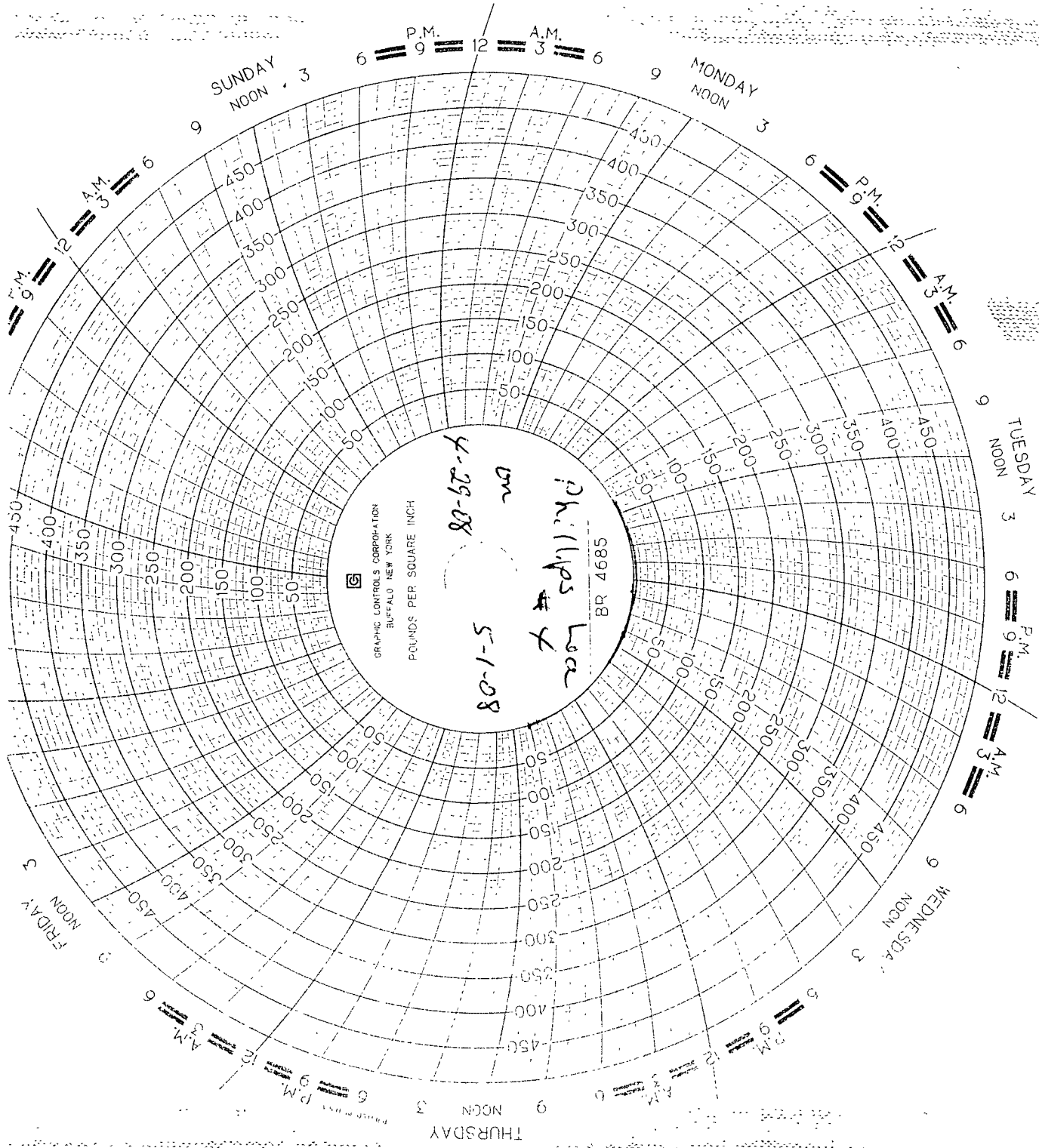
*Refer to note on other  
chart.*











GRAPHIC CONTROLS CORPORATION  
BUFFALO NEW YORK  
POUNDS PER SQUARE INCH