

Submit 3 Copies To Appropriate District  
Office  
District I  
1625 N. French Dr., Hobbs, NM 87240  
District II  
1301 W. Grand Ave., Artesia, NM 88210  
District III  
1000 Rio Brazos Rd., Aztec, NM 87410  
District IV  
1220 S. St. Francis Dr., Santa Fe, NM 87505

State of New Mexico  
Energy, Minerals and Natural Resources

OIL CONSERVATION DIVISION  
1220 South St. Francis Dr.  
Santa Fe, NM 87505

Form C-103  
May 27, 2004

SUNDRY NOTICES AND REPORTS

(DO NOT USE THIS FORM FOR PROPOSALS TO DRILL OR TO REEVALUATE A  
DIFFERENT RESERVOIR. USE "APPLICATION FOR PERMIT" (FORM C-101) FOR SUCH  
PROPOSALS.)

1. Type of Well:  
Oil Well ☐ Gas Well ☒ Other

2. Name of Operator  
BP AMERICA PRODUCTION COMPANY

3. Address of Operator  
501 WESTLAKE PARK BLVD, RM 6.121, HOUSTON, TX 77079

4. Well Location  
Unit Letter M : 690 feet from the South line and 1160 feet from the West line  
Section 28 Township 17S Range 34E NMPM County LEA

11. Elevation (Show whether DR, RKB, RT, GR, etc.)  
4064

Pit or Below-grade Tank Application ☐ or Closure ☐

Pit type NA Depth to Groundwater Distance from nearest fresh water well Distance from nearest surface water

Pit Liner Thickness: mil Below-Grade Tank: Volume bbls; Construction Material

WELL API NO.

30-025-37382

5. Indicate Type of Lease

STATE ☒ FEE ☐

6. State Oil & Gas Lease No.  
B-1431

7. Lease Name or Unit Agreement Name:  
SUNFLOWER 28 STATE

8. Well Number

2

9. OGRID Number

192463

10. Pool name or Wildcat  
Vacuum MORROW

12. Check Appropriate Box to Indicate Nature of Notice, Report, or Other Data

NOTICE OF INTENTION TO:

PERFORM REMEDIAL WORK ☐ PLUG AND ABANDON ☐

TEMPORARILY ABANDON ☐ CHANGE PLANS ☐

PULL OR ALTER CASING ☐ MULTIPLE COMPLETION ☐

OTHER: ☐

SUBSEQUENT REPORT OF:

REMEDIAL WORK ☒ ALTERING CASING ☐

COMMENCE DRILLING OPNS. ☐ PLUG AND ABANDONMENT ☐

CASING TEST AND CEMENT JOB ☐

OTHER: ☐

13. Describe proposed or completed operations. (Clearly state all pertinent details, and give pertinent dates, including estimated date of starting any proposed work). SEE RULE 1103. For Multiple Completions: Attach wellbore diagram of proposed completion or recompletion.

The Sunflower 28 State #2 was given an NOV for "failing MIT" due to pressure being on the tubing-casing annulus. On 4/2/2008, BP America Production Company set CIBP at 13,074'. Perf intervals 13124-126, 13150-155, 13272-274 were covered with 40' of cement dumped on plug. Checked csg/wellhead for pressure, bled off.

Ran in hole with tbgr. Ran in hole with 2.375 API sn, (12,923), 398 jnts 2.375 L-80 (12,921).

Recompletion to the Canyon formation will be a separate recompletion procedure to follow.

I hereby certify that the information above is true and complete to the best of my knowledge and belief. I further certify that any pit or below-grade tank has been/will be constructed or closed according to NMOC guidelines ☐ , a general permit ☐ or an (attached) alternative OCD-approved plan ☐

SIGNATURE Deann Smyers TITLE REGULATORY STAFF ASSISTANT DATE 5/01/2008

Type or print name DEANN SMYERS E-mail address: smyerscd@bp.com Telephone No. 281-366-4395

For State Use Only

APPROVED BY Chris Williams TITLE OC DISTRICT SUPERVISOR/GENERAL MANAGER DATE JUN 05 2008

Conditions of Approval, if any:

Drilled by OXY Permian  
Completed & Operated by BP America

Abandon Morrow as of 4/7/2008

GL = 4064'

**RKB = 17.5'**

**Event Date**

Spud	10/27/05
RR	12/16/05

13 3/8" 48# H-40 STC @ 515'

Cmt'd w/ 400 sx, circ to surface

Rustler 1560'

95/8" 40# K-55 & J-55 LTC @ 5016'

Cmt'd w/ 1090 sx Interfill "C" (11.5 ppg, 2.78 yield)  
& 200 sx Premium Plus (14.8 ppg, 1.32 yield)  
Circ'd 155 sx

11/9/05

Glorieta 6166'

Tubb 7627'

Drinkard 7794'

Abo 8229'

DV @ 8537' (note drilled @ 8526' SLM)

### 2<sup>nd</sup> Stage

1675 sx Interfill "H" (11.5 ppg, 2.76 yield)

1500 sx "H" (15 6 ppg, 1 18 yield)

Circ 80 sx fto surface

Wolfcamp 10,159'

Cisco 11,050'

Canyon 11.487'

Strawn 12,128'

Atoka 12,597'

Morrow 12,850'

398 jts 2 3/8" 4 7# L-80 EUE 8r tbg  
1 - 2 3/8" SN 12,923'

Middle Morrow 13,058'

CIBP @ 13,074', dumped 40' cmt on top

4/3/08

Morrow 13,124' - 13,126' 4 JSPF thru tbg gun

1/26/06

Morrow 13,150' - 13,155' 4 JSPF = 21 holes

1/23/06

Morrow 13,272' - 13,274' 1 JSPF = 3 holes

1/23/06

Lower Morrow 13,328'

Mississippi Shale 13,360'

5 1/2" 17# L-80 LTC 0' - 10.266'

5 1/2" 17# P-110 LTC 10,266' - 12,354'

5 1/2" 17# HCP-110 LTC 12,354' - 13,477'

12/16/05

### 1<sup>st</sup> Stage

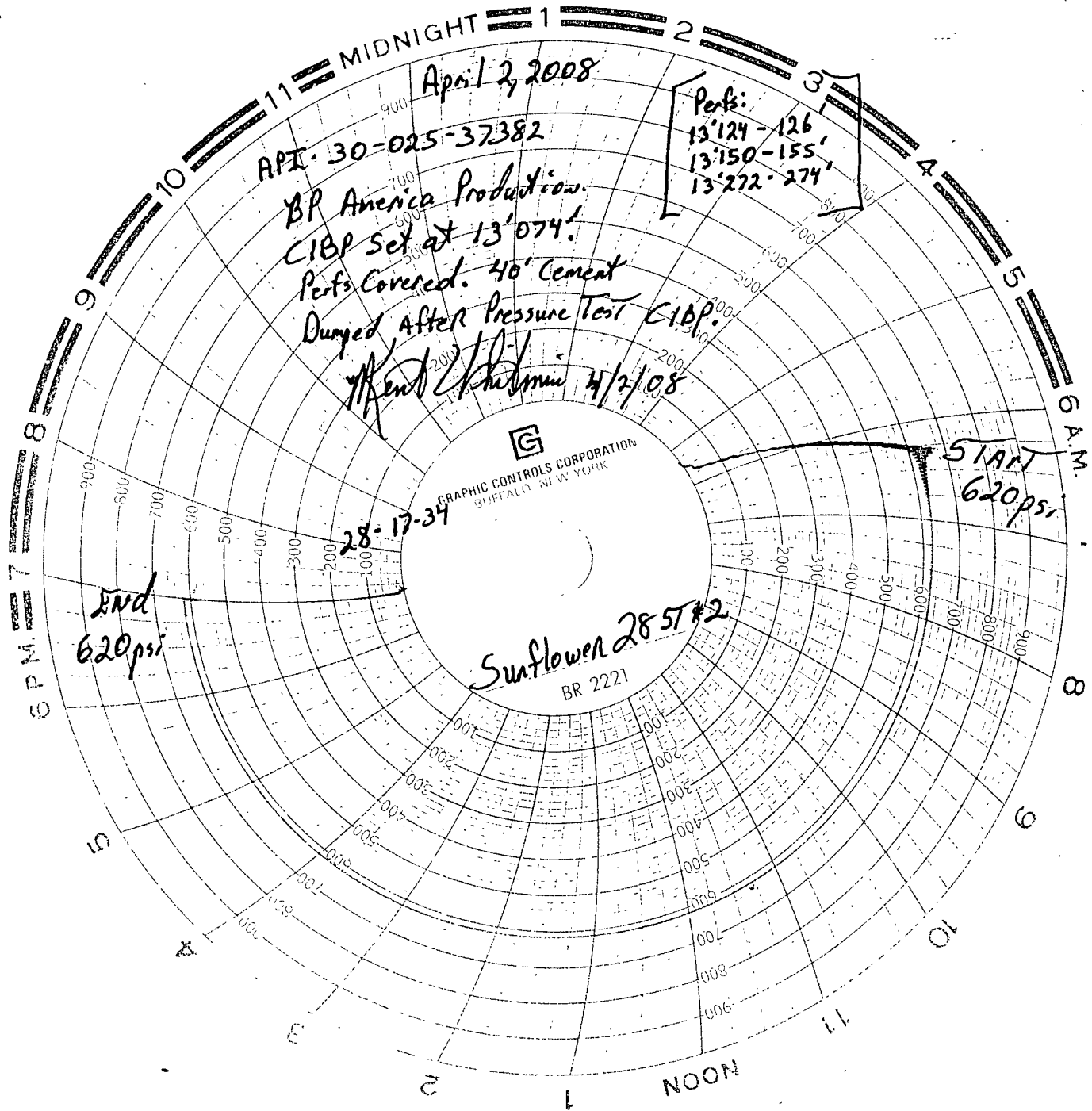
650 sx Interfill "H" (11.5 ppg, 2.76 yield)

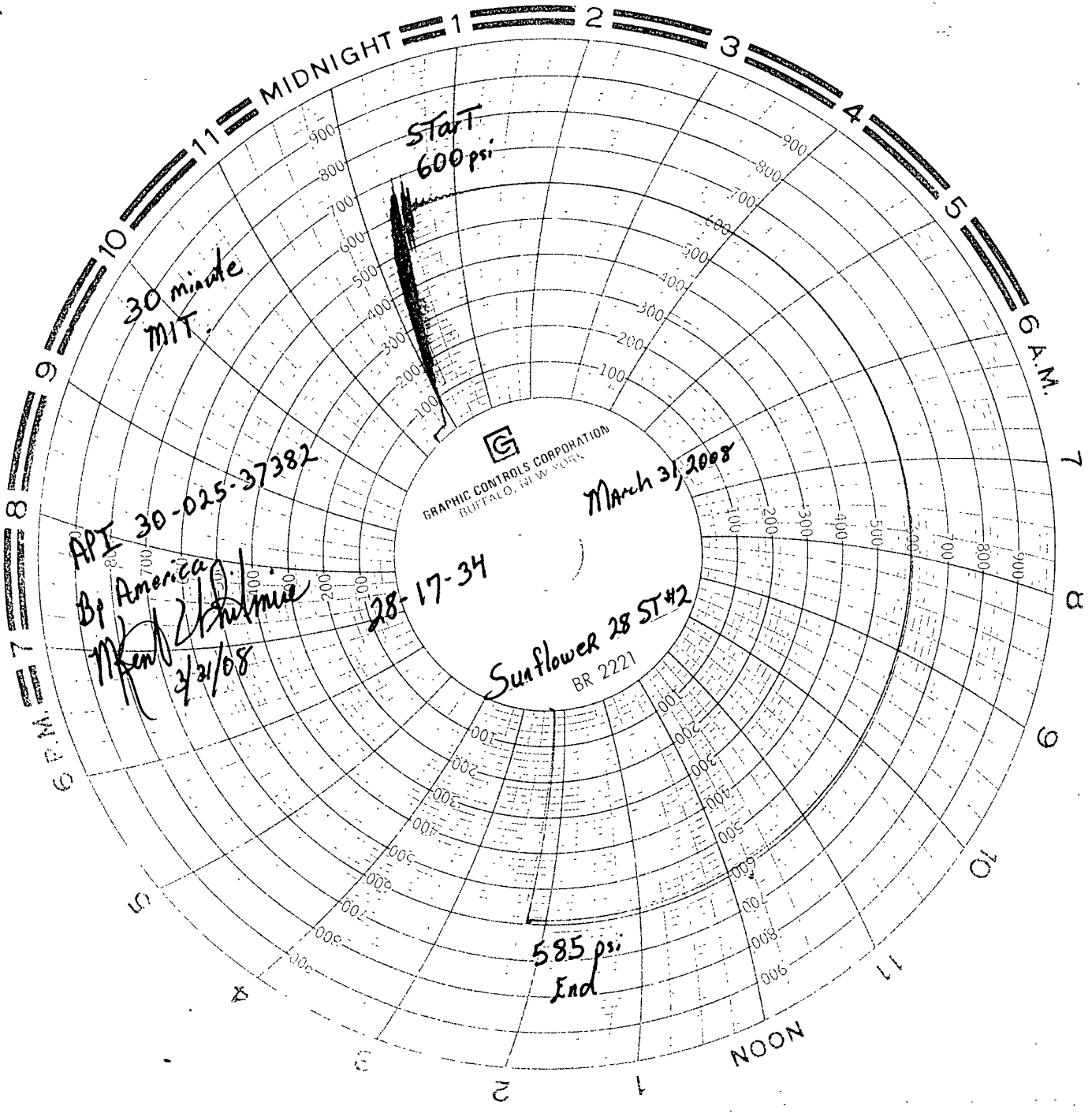
410 sx Super "H" (13.0 ppg, 1.67 yield)

Circ 40 sx from DV tool

13,034' PBD  
13,480' TD

WCH 4/21/2008





API 30-025-37382

By America  
MIT  
3/31/08

28-17-34

March 31, 2008

Sunflower 28 ST#2  
BR 2221

GRAPHIC CONTROLS CORPORATION  
BUFFALO, NEW YORK

Start  
600 psi

585 psi  
End

30 minute  
MIT

NOON

## Operations Summary Report

Legal Well Name: SUNFLOWER 28 STATE #2

Common Well Name: SUNFLOWER 28 STATE #2

Event Name: WORKOVER

Start: 3/26/2008

Spud Date: 10/28/2005

Contractor Name: KEY ENERGY SERVICES

Rig Release: 4/4/2008

End: 4/4/2008

Rig Name: RIG 296

Rig Number:

Date	From - To	Hours	Task	Code	NPT	Phase	Description of Operations
3/26/2008	05:30 - 07:30	2.00		P		OTHCMP	DRIVE TO LOCATION. TRAVEL TO BLK 31 CC-3 WELL LOCATION.
	07:30 - 08:00	0.50		P		OTHCMP	GENERAL SAFETY MEETING: MADT, PRE-JOB, JSEA-DRIVING RIG TO LOCATION.
	08:00 - 14:30	6.50		P		OTHCMP	DRIVE RIG FROM BLK 31, CC-3, TO SUNFLOWER 28-2.
	14:30 - 15:00	0.50		P		OTHCMP	GENERAL SAFETY MEETING: MADT, PRE-JOB, JSEA-RIG UP PULLING UNIT.
3/27/2008	15:00 - 17:30	2.50		P		OTHCMP	RIG UP PULLING UNIT.
	17:30 - 18:30	1.00		P		OTHCMP	SHUT DOWN. DRIVE TO HOBBS.
	05:30 - 06:00	0.50		P		OTHCMP	DRIVE FROM HOBBS TO LOCATION
	06:00 - 06:30	0.50		P		OTHCMP	GENERAL SAFETY MEETING: MADT, PRE-JOB, JSEA-MOVING IN WELL CONTROL EQUIPMENT, CONNECTING FLOW BACK MANIFOLD TO WELL AND FLOW TANK.
	06:30 - 08:30	2.00		P		OTHCMP	RIG UP FLOW BACK MANIFOLD FROM WELL HEAD TO FLOW BACK 1/2 PIT.
	08:30 - 09:00	0.50		P		OTHCMP	SAFETY MEETING-JSEA- BLEEDING DOWN CASING/TUBING PRESURE.
	09:00 - 12:30	3.50		P		OTHCMP	OPEN CASING TO FLOW MANIFOLD. CSG PRESSURE 1650 PSI. OPENED MANIFOLD TO 15/64. CASING PRESSURE BLEW DOWN IN 37 MINUTES. SI TUBING PRESSURE FELL FROM 2800 TO 2400 PSI. LOADED CASING WITH 120 BBLS 7 % KCL. CONNECTED TBG TO MANIFOLD AND FLOW TANK. BLED TBG PRESS (2400) THRU 10/64-15/64 CHOKE. FLUID TO SURFACE IN 20 MINUTES, WITH 500 PSI ON TUBING. LOADED TBG WITH 8 BBLS 7% KCL.
	12:30 - 13:00	0.50		P		OTHCMP	SAFETY MEETING-JSEA-RIG UP/DOWN SLICK LINE TRUCK AND EQUIPMENT. JSEA-RI-OH WITH GAUGE RING AND BLANKING PLUG.
	13:00 - 13:45	0.75		P		OTHCMP	RIG UP SLICK LINE TRUCK AND EQUIPMENT.
	13:45 - 14:30	0.75		P		OTHCMP	RIH WITH 1.770" GAUGE RING TO PKR PROFILE NIPPLE AT 12'992'. GAUGE RING RAN GOOD. TBG HAD 820 PSI.
	14:30 - 15:00	0.50		P		OTHCMP	RIG DOWN SLICK LINE TRUCK.
	15:00 - 15:15	0.25		P		OTHCMP	SAFETY MEETING-REVIEW JSEA-BLEED DOWN TUBING
	15:15 - 16:10	0.92		P		OTHCMP	bled TBG PRESSURE (820 PSI) THRU MANIFOLD TO FLOW PIT BLED TO ZERO IN 15 MINUTES. WAITED 40 MINUTES FOR GASEOUS FLUID COLUMN TO STABILIZE.
	16:10 - 16:30	0.33		P		OTHCMP	SAFETY MEETING: JSEA-HYDRO/ PUMPING-DISPLACING TBG VOLUMN.
	16:30 - 17:00	0.50		P		OTHCMP	HYDRO TESTED PUMPING LINE TO WELL HEAD TO 2500 PSI. GOOD.
	17:00 - 18:00	1.00		P		OTHCMP	TBG LOADED WITH 17 BBLS 7% KCL. PUMPED-DISPLACED TBG VOLUMN WITH 53 BBLS 7%. PRESSURE REACHED TO 1550 PSI. SI/SD WITH PRESSURE STABILIZING AT 1500 PSI. SHUT IN WELL. SD.
3/28/2008	18:00 - 18:30	0.50		P		OTHCMP	TRAVEL TO HOBBS.
	05:30 - 06:00	0.50		P		OTHCMP	TRAVEL FROM HOBBS TO LOCATION.
	06:00 - 06:30	0.50		P		OTHCMP	GENERAL SAFETY MEETING, MADT, JSEA-1.) CHECK WELL PRESSURES/BLEED OFF.
	06:30 - 07:00	0.50		P		OTHCMP	BLEED OFF CSG PRESSURE, 1100 PSI, THRU FLOW

## Operations Summary Report

Legal Well Name: SUNFLOWER 28 STATE #2  
 Common Well Name: SUNFLOWER 28 STATE #2  
 Event Name: WORKOVER  
 Contractor Name: KEY ENERGY SERVICES  
 Rig Name: RIG 296

Spud Date: 10/28/2005  
 Start: 3/26/2008  
 End: 4/4/2008  
 Rig Release: 4/4/2008  
 Rig Number:

Date	From - To	Hours	Task	Code	NPT	Phase	Description of Operations
3/28/2008	06:30 - 07:00	0.50		P		OTHCMP	MANIFOLD TO 1/2 PIT. PRESSURE BLED DOWN IN 7 MINUTES. LOADED CSG WITH 5 BBLs BRINE.
	07:00 - 07:30	0.50		P		OTHCMP	SAFETY MEETING: JSEA- RIG UP SLICK LINE TRUCK, RIH W/BLANKING PLUG. SET PLUG IN PKR PROFILE NIPPLE.
	07:30 - 08:15	0.75		P		OTHCMP	RIG UP SLICK LINE TRUCK AND TOOLS.
	08:15 - 08:45	0.50		P		OTHCMP	TUBING PRESSURE HAD STABILIZED AT 800 PSI. RAN IN HOLE WITH BLANKING PLUG. FLUID LEVEL WAS 150' FS. FROM SURFACE TO 4000', FLUID WAS GASEOUS. FLUID WAS SOLID FROM 4000' TO PKR. SLICK LINE RECORDED PKR AT 12'992.
	08:45 - 09:10	0.42		P		OTHCMP	SET BLANKING PLUG IN PKR PROFILE NIPPLE.
	09:10 - 09:40	0.50		P		OTHCMP	PULLED OUT OF HOLE WITH BLANKING PKUG SET TOOL.
	09:40 - 10:30	0.83		P		OTHCMP	RIG DOWN SLICK LINE TOOLS. LEFT TRUCK POSITIONED ON LOCATION TO BREAK PLUG DISC, 3.29.08.
	10:30 - 16:45	6.25		P		OTHCMP	PREPARE WELL HEAD FOR 10K BOP INSTALLATION. CLEAN WORK AREA, ORGANIZE WORK AREA.
	16:45 - 17:00	0.25		P		OTHCMP	RE-CHECKED WELL FOR SHUT IN. SECURED WELL LOCATION.
	17:00 - 17:30	0.50		P		OTHCMP	TRAVEL FROM LOCATION TO HOBBS.
3/29/2008	05:30 - 06:00	0.50		P		OTHCMP	TRAVEL FROM HOBBS TO LOCATION.
	06:00 - 06:30	0.50		P		OTHCMP	GENERAL SAFETY MEETING, MADT, JSEA-CHECK AND BLEED DOWN WELL HEAD PRESSURE.
	06:30 - 07:30	1.00		P		OTHCMP	TBG IS STATIC. CSG HAD 27 PSI. BLED DOWN IN 30 SECONDS. LOADED CSG W/5 BBLs BRINE
	07:30 - 08:00	0.50		P		OTHCMP	SAFETY MEETING, JSEA- NIPPLE DOWN WELL HEAD AND NIPPLE UP 10K BOP.
	08:00 - 09:00	1.00		P		OTHCMP	NIPPLE DOWN WELL HEAD. COOMBS PU WELL HEAD AND DELIVERED TO CAMERON FOR WELL HEAD VALVE DRESSING AND CONDITIONING.
	09:00 - 11:00	2.00		P		OTHCMP	NIPPLED UP 10K HYDRALIC BOP.
	11:00 - 11:30	0.50		P		OTHCMP	SAFETY MEETING, JSEA- 1) RIG UP SLICK LINE TRUCK/TOOL TO BREAK PLUG DISC, RUN IN HOLE-BREAK DISC-POOH W/SLICK LINE TOOL. 2) RIH W/PLUG FISHING TOOL TO CATCH PLUG AND POOH.
	11:30 - 13:00	1.50		P		OTHCMP	RUN IN HOLE W/SLICK LINE PERCHING TOOL TO BREAK PLUG DISC. DISPLACED FLUID IN TBG WHEN RIH W/TOOL. TOOL DEPTH AT DISC RECORDED 12'990. MADE TEN RUNS W/TOOL TO BREAK DISC. TBG PRESSURE INCREASED WHEN DISC WAS BROKE, PREESSURE WAS REPLACED W/VACUUM IN 5 MINUTES. TBG STAYED ON VACUUM. POOH WITH PERCHING TOOL.
	13:00 - 14:30	1.50		P		OTHCMP	RAN IN HOLE W/PLUG FISH TOOL. FOUND FLUID LEVEL AT 3'000' FS. CAUGHT PLUG, POOH.
	14:30 - 15:00	0.50		P		OTHCMP	RIG DOWN SLICK TOOLS AND TRUCK.
	15:00 - 15:30	0.50		P		OTHCMP	SAFETY MEETING, JSEA, J-OFF PKR, EQUALIZING TBG AND CSG, J-ON, UNSEATING PKR, POOH W/TBG AND PKR.
	15:30 - 16:30	1.00		P		OTHCMP	J-OFF PKR TO EQUALIZE TBG AND CSG. WAITED FOR BOTH SIDE TO BE STATIC. J-ON TO PKR, UNSEAT AND POOH W/TBG AND PKR. TALLEID TBG WHILE PULLING OUT OF HOLE.

## Operations Summary Report

Legal Well Name: SUNFLOWER 28 STATE #2  
 Common Well Name: SUNFLOWER 28 STATE #2  
 Event Name: WORKOVER  
 Contractor Name: KEY ENERGY SERVICES  
 Rig Name: RIG 296

Spud Date: 10/28/2005  
 Start: 3/26/2008  
 End: 4/4/2008  
 Rig Release: 4/4/2008  
 Rig Number:

Date	From - To	Hours	Task	Code	NPT	Phase	Description of Operations
3/29/2008	16:30 - 18:00	1.50		P		OTHCMP	TALLIED AND STOOD BACK 30 STANDS. LEFT 102 STANDS WITH PKR HANGING IH. SHUT IN WELL BOP TBG RAMS. SECURED BOP RAMS IN CLOSED POSITION. SECURED LOCATION AND SHUT DOWN.
3/30/2008	05:30 - 06:00	0.50		P		OTHCMP	TRAVEL TO LOCATION.
	06:00 - 06:30	0.50		P		OTHCMP	GENERAL SAFETY MEETING, JSEA- 1)CHECKING WELL PRESSURE 2)TALLEY TBG OOH-POOH W/PKR.
	06:30 - 07:00	0.50		P		OTHCMP	CHECK WELL PRESSURE. TBG IS ZERO, CSG HAD 3 PSI. BLED OFF TO THRU MANIFOLD TO 1/2 PIT. LOADED CSG W/4 BBLS BRINE.
	07:00 - 11:00	4.00		P		OTHCMP	POOH -TALLIED TBG AND PKR. PKR WAS AN AS-1X. WHEN POOH THE PKR ELEMENTS WERE OFF OF TOOL. TBG JTS LOOKED GOOD. 405 JTS WERE TALLIED, WITH A LENGTH OF 12'985.
	11:00 - 11:30	0.50		P		OTHCMP	SAFETY MEETING, JSEA-1) PU-RIH W/RBP AND PKR.2)RU VAC TRUCK TO CATCH FLUID DISPLACEMENT.
	11:30 - 12:00	0.50		P		OTHCMP	RIG UP VAC TRUCK TO CATCH FLUID DISPLACEMENT WHILE RIH WITH RPB/PKR AND TBG.
	12:00 - 15:45	3.75		P		OTHCMP	TBG, PKR AND RBP IH.
	15:45 - 16:30	0.75		P		OTHCMP	RBP WAS A 5 1/2 MC-2, PKR WAS A 5 1/2 K-3 COMPRESSION PKR. SET RBP AT 12'970'. PULLED 10, 20 OVER TO SET. J-OFF RPB W/PKR. WHILE PULLING PKR UP HOLE @ 12'950', PKR HUNG UP. TOOK 20 PTS TO FREE. PULLED PKR UP AND LEFT HANGING.
	16:30 - 17:05	0.58		P		OTHCMP	HYDRO TESTED WELL TO 600 PSI. RAN A 30 PRESSURE CHART TO RECORD MIT ON CSG. TEST STARTED AT 600 PSI, ENDED WITH PRESSURE OF 585 PSI.
	17:05 - 17:15	0.17		P		OTHCMP	BLED PRESSURE OFF CSG.
	17:15 - 17:45	0.50		P		OTHCMP	RUN BACK AND LATCH UP TO RBP. (DID NOT FEEL OR SEE THE AREA IN QUESTION, 12'950', THAT HUNG THE PKR.) UNSET THE RBP AND LEFT BOTH THE RBP AND PKR SWINGING. SHUT IN THE BOP TBG RAMS, SECURED RAMS AT BOP. SHUT DOWN AND SECURED LOCATION.
	17:45 - 18:30	0.75		P		OTHCMP	TRAVEL TO HOBBS.
	05:30 - 06:00	0.50		P		OTHCMP	TRAVEL TO LOCATION.
	06:00 - 06:30	0.50		P		OTHCMP	GENERAL SAFETY MEETING, JSEA-1)CHECK WELL PRESSURES, 2)POOH W/TBG, PKR, AND RBP.
4/1/2008	06:30 - 07:00	0.50		P		OTHCMP	CHECK WELL TBG AND CSG PRESSURE. TBG HAD SMALL BLOW, ZERO PRESSURE ON CSG.
	07:00 - 10:30	3.50		N		OTHCMP	SHUT DOWN DUE TO HIGH WINDS. WIND SPEEDS OF >39 MPH.
	10:30 - 14:30	4.00		P		OTHCMP	PULLED OUT OF HOLE WITH TBG, PKR AND RBP. PKR HAD BENT METAL PKR ELEMENT WASHER. THOUGHT TO BE WHAT HUNG UP THE PREVIOUS DAY. THE MC-2 RBP HAD SOME ELEMENT MATERIAL MISSING, LOST IN HOLE.
	14:30 - 15:00	0.50		P		OTHCMP	SAFETY MEETING JSEA-1) RU ELECTRIC WL TRUCK AND TOOLS, 2)RUN WL JUNK BASKET AND GUAGE RING (4.650), 3) RU AND RIH W/CIBP, 4) RD WL TOOLS AND TRUCK.
	15:00 - 16:00	1.00		P		OTHCMP	POSITIONED WL TRUCK AND RIGGED UP TOOLS. DID NOT RUN WL TOOLS DUE TO LIMITED ON DAY LIGHT.
	16:00 - 17:00	1.00		P		OTHCMP	WILL RUN JOB, 4.20.08. RIH IN HOLE WITH 30 STANDS FOR KILL STRING. SHUT IN

## Operations Summary Report

Legal Well Name: SUNFLOWER 28 STATE #2  
 Common Well Name: SUNFLOWER 28 STATE #2  
 Event Name: WORKOVER  
 Contractor Name: KEY ENERGY SERVICES  
 Rig Name: RIG 296

Start: 3/26/2008  
 Rig Release: 4/4/2008  
 Spud Date: 10/28/2005  
 End: 4/4/2008  
 Rig Number:

Date	From - To	Hours	Task	Code	NPT	Phase	Description of Operations
4/1/2008	16:00 - 17:00	1.00		P		OTHCMP	TBG RAMS, AND SECURED RAMS AT BOP. SECURED LOCATION AND SD.
4/2/2008	17:00 - 17:30	0.50		P		OTHCMP	TRAVEL TO HOBBS.
	05:30 - 06:00	0.50		P		OTHCMP	TRAVEL TO LOCATION
	06:00 - 06:45	0.75		P		OTHCMP	GENERAL SAFETY MEETING, JSEA-1)CHECK WELL PRESSURE 2)POOH W/KILL STRING 3)RIG UP WIRE LINE TRUCK, GAUGE RING AND JUNK BASKET. RI-OH W/GR & JB.
	06:45 - 08:00	1.25		P		OTHCMP	OPEN TBG RAMS ON BOP. OPEN BOP. PULL 30 STANDS KILL STRING OUT OF HOLE.
	08:00 - 08:40	0.67		P		OTHCMP	RIG UP WIRE LINE EQUIPMENT. PREPARE TO RUN IN THE HOLE W/GAUGE RING AND JUNK BASKET.
	08:40 - 11:00	2.33		P		OTHCMP	PICK UP GAUGE RING AND JUNK BASKET, RAN IN HOLE. GAUGE RING RAN WAS 4.625". GAUGE RING TO CCL IS 12'. GAUGE RING RAN GOOD. NO OBSTRUCTION OBSERVED 12'950'. RAN GAUGE RING TO 13'110. RECOVERED HAND FULL OF RUBBER PACKING ELEMENT. SI BOP BLIND.
	11:00 - 11:30	0.50		P		OTHCMP	SAFETY MEETING, JSEA-1)TURN OFF ALL PHONES, RADIO TRANSMITTERS, ECT. STATION TRUCK TO KEEP UNAUTHORIZED PERSONEL FROM ENTERING WELL LOCATION.2).RIGGING UP CIBP SETTING TOOL, AND CIBP. 3) RIH W/CIBP.
	11:30 - 12:00	0.50		P		OTHCMP	RIG UP CIBP SETTING TOOL AND INSTALLATION OF THE CIBP ON TOOL.
	12:00 - 14:30	2.50		P		OTHCMP	PICK UP CIBP SETTING TOOL AND CIBP. OPEN BOP BLIND. RUN HOLE WITH TOOL AND CIBP. CIBP-4.24". CCL TO CIBP-8 1/2'. FLUID LEVEL AT 850'. 13:30- GET TO SETTING DEPTH. RAN GAMMA RAY LOG, 12'922-13'050'. ADDED 19' TO CURRENT DEPTH. PUT TOOL ON DEPTH. SET TOOL AT 13'065.5' + (8.5')= 13'074.0'. CIBP SET @ 13'074.0'. CHECK PLUG SETTING...LOST WEIGHT. POOH W/CIBP SETTING TOOL. SHUT IN BOP BLIND. LD TOOL, BLED OFF TOOL PRESSURE.
	14:30 - 15:00	0.50		P		OTHCMP	SAFETY MEETING, JSEA- 1)PRESSURE TEST CIBP-CHART TEST. 2)RU CEMENT EQUIPMENT, MAKING 3 RUNS W/BAILER TO DUMP 40' CEMENT ON PLUG.
	15:00 - 15:30	0.50		P		OTHCMP	PRE-TEST PUMPING LINE TO 1250 PSI. GOOD.
	15:30 - 16:00	0.50		P		OTHCMP	ATTACHED CHART RECORDER TO LINE. PRESSURED LINE AND WELL CSG TO 620 PSI. CHART PRESURE TEST FOR 30 MINUTES. BLED PRESSURE OFF. GOOD.
	16:00 - 16:45	0.75		P		OTHCMP	RIG UP WL CEMENT DUMP BAILER TO DUMP CEMENT. RAN IN HOLE.
	16:45 - 18:00	1.25		P		OTHCMP	RUN IN HOLE WITH ONE BAILER OF CEMENT. POOH SI BOP BLIND. ( DUMPED @ 12 GALS-12' CEMENT ON CIBP. RIG DOWN. WILL COMPLETE CEMENT DUMPS, 4.3.08.)
	18:00 - 18:30	0.50		P		OTHCMP	OPEN BOP BLIND. RIH WITH 30 STANDS KILL STRING. SHUT IN BOP TBG RAM. SECURED TBG RAM AT BOP. SD.
	18:30 - 19:00	0.50		P		OTHCMP	TRAVEL TO HOBBS.
4/3/2008	05:30 - 06:00	0.50		P		OTHCMP	TRAVEL TO LOCATION.
	06:00 - 06:30	0.50		P		OTHCMP	GENERAL SAFETY MEETING, JSEA:1) POOH W/KILL STRING



## Operations Summary Report

Legal Well Name: SUNFLOWER 28 STATE #2

Common Well Name: SUNFLOWER 28 STATE #2

Event Name: WORKOVER

Contractor Name: KEY ENERGY SERVICES

Rig Name: RIG 296

Start: 3/26/2008

Rig Release: 4/4/2008

Rig Number:

Spud Date: 10/28/2005

End: 4/4/2008

Date	From - To	Hours	Task	Code	NPT	Phase	Description of Operations
4/3/2008	06:30 - 07:00	0.50		P		OTHCMP	CHECK TBG/CSG FOR PRESSURE. ZERO PRESSURE. OPEN BOP TBG RAMS AT BOP. OPEN TBG BOP RAMS AT ACCUMULATOR. POOH W/KILL STRING.
	07:00 - 07:30	0.50		P		OTHCMP	SAFETY MEETING, JSEA: RIGGING UP WIRE LINE TRUCK AND CEMENT BAILER. ARMING DET CAP, RUNNING IN HOLE W/BAILER. LD BAILER.
	07:30 - 08:30	1.00		P		OTHCMP	RIGGED UP WIRE LINE TRUCK, AND CEMENT BAILER EQUIPMENT.
	08:30 - 09:30	1.00		P		OTHCMP	WILL MAKE TWO BAILER RUNS. RAN IN HOLE WITH FIRST CEMENT BAILER. RAN BAILER TO 13'062, DUMPED CEMENT, PUT TOP OF CEMENT @ 13'048'.
	09:30 - 10:00	0.50		P		OTHCMP	PULL OUT OF HOLE W/CEMENT BAILER. PREPARE CEMENT BAILER FOR SECOND RUN.
	10:00 - 11:00	1.00		P		OTHCMP	RUN IN HOLE WITH SECOND CEMENT BAILER RUN. GOOD. RAN BAILER TO 13'048, DUMPED CEMENT, PUT TOP OF CEMENT @ 13'034'.
	11:00 - 12:00	1.00		P		OTHCMP	RIG DOWN WIRE LINE EQUIPMENT AND TRUCK. MOVED WIRE LINE TRUCK AND EQUIPMENT OFF LOCATION.
	12:00 - 12:30	0.50		P		OTHCMP	SAFETY MEETING, JSEA: RUNNING TBG BACK IN HOLE.
	12:30 - 14:00	1.50		P		OTHCMP	RAN IN HOLE WITH 139 STANDS. STOPPED WORK TO TIE BACK TO 4 TBG LINES.
	14:00 - 16:30	2.50		N		OTHCMP	WAITED AND MONITORED WIND. STOPPED DUE TO HIGH WINDS. GUST 37 MPH. WAIT FOR WIND TO FALL. SHUT DOWN. WINDS SPEEDS GREATER THAN 30 MPH. SHUT IN TGB RAM AT ACCUMULATOR. SECURED RAMS AT BOP. INSTALLED TWI VALVE, WITH BULLPLUG AND NIDDLE VALVE. SECURED LOCATION.
	16:30 - 17:00	0.50		N		OTHCMP	TRAVEL TO HOBBS.
4/4/2008	05:30 - 06:00	0.50		P		OTHCMP	TRAVEL TO LOCATION.
	06:00 - 06:30	0.50		P		OTHCMP	GENERAL SAFETY, MADT, JSEA: RUNNING IN HOLE WITH TUBING.
	06:30 - 09:30	3.00		P		OTHCMP	RAN IN HOLE WITH TUBING. RAN IN HOLE WITH 2.375 API SN, (12'923.03'), 398 JTNS 2.375 L80, (12'921.93').
	09:30 - 10:00	0.50		P		OTHCMP	SAFETY MEETING, JSEA: NIPPLE DOWN BOP, NIPPLE UP WELL HEAD.
	10:00 - 13:30	3.50		P		OTHCMP	NIPPLED DOWN 10 K BOP. NIPPLED UP WELL HEAD. WELL AND VALVES WERE INSPECTED, RE-CONTIONED, AND TESTED AT CAMERON.
	12:00 - 12:30	0.50		P		OTHCMP	SAFETY MEETING, JSEA: RIGGING DOWN THE PULLING UNIT.
	12:30 - 14:30	2.00		P		OTHCMP	RIGGED DOWN THE PULLING UNIT. READIED FOR TRIP TO EAU F30, MONDAY, 4.7.08. CLEANED AND SECURED LOCATION.
	14:30 - 16:00	1.50		P		OTHCMP	TRAVEL TO HOBBS.