

DISTRICT I  
1625 N. FRENCH DR., HOBBS, NM 88240

DISTRICT II  
1301 W. GRAND AVENUE, ARTESIA, NM 88210

DISTRICT III  
1000 Rio Brazos Rd., Aztec, NM 87410

DISTRICT IV  
1220 S. ST. FRANCIS DR., SANTA FE, NM 87505

RECEIVED

State of New Mexico  
Energy, Minerals and Natural Resources Department

REC'D / MIDLAND

OCT 29 2007

Form C-102

Revised October 12, 2005

Submit to Appropriate District Office

State Lease - 4 Copies

Fee Lease - 3 Copies

APR 10 2008 CONSERVATION DIVISION

HOBBS OGD

1220 SOUTH ST. FRANCIS DR.  
Santa Fe, New Mexico 87505

As Drilled Plat

WELL LOCATION AND ACREAGE DEDICATION PLAT

☐ AMENDED REPORT

API Number 30-025-24851	Pool Code 61760	Pool Name Vacuum; ABO, North
Property Code 301587	Property Name NORTH VACUUM ABO UNIT	Well Number 222 <i>JA</i>
OGRID No. 005380	Operator Name XTO ENERGY	Elevation 4000'

Surface Location

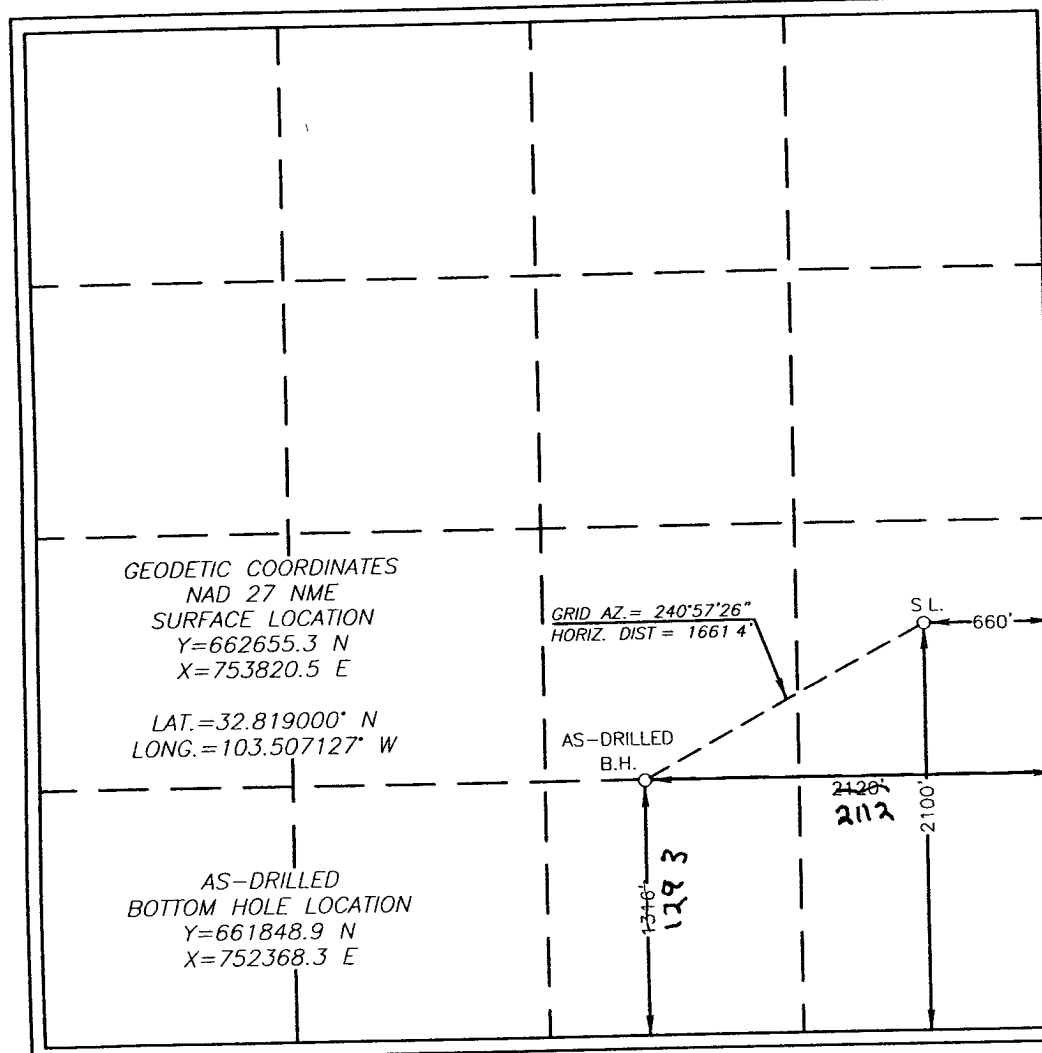
UL or lot No.	Section	Township	Range	Lot Idn	Feet from the	North/South line	Feet from the	East/West line	County
1	24	17-S	34-E		2100	SOUTH	660	EAST	LEA

Bottom Hole Location If Different From Surface

UL or lot No.	Section	Township	Range	Lot Idn	Feet from the	North/South line	Feet from the	East/West line	County
0	24	17-S	34-E		1316	SOUTH	2120	EAST	LEA

Dedicated Acres	Joint or Infill	Consolidation Code	Order No.

NO ALLOWABLE WILL BE ASSIGNED TO THIS COMPLETION UNTIL ALL INTERESTS HAVE BEEN CONSOLIDATED  
OR A NON-STANDARD UNIT HAS BEEN APPROVED BY THE DIVISION



OPERATOR CERTIFICATION

I hereby certify that the information herein is true and complete to the best of my knowledge and belief, and that this organization either owns a working interest or unleased mineral interest in the land including the proposed bottom hole location or has a right to drill this well at this location pursuant to a contract with an owner of such mineral or working interest, or to a voluntary pooling agreement or a compulsory pooling order heretofore entered by the division.

*Sherry Pack* 4/10/2008  
Signature Date

Sherry Pack  
Printed Name

SURVEYOR CERTIFICATION

I hereby certify that the well location shown on this plat was plotted from field notes of actual surveys made by me or under my supervision, and that the same is true and correct to the best of my belief.

*Ronald J. Eidson*  
Date Surveyed Seal of Professional Surveyor  
Professional Surveyor

*Ronald J. Eidson* 10/26/07  
07.13.1509

Certificate No. GARY EIDSON 12641  
RONALD J. EIDSON 3239