

DISTRICT I  
1625 N. FRENCH DR., HOBBS, NM 88240

DISTRICT II  
1301 W. GRAND AVENUE, ARTESIA, NM 88210

DISTRICT III  
1000 Rio Brazos Rd., Aztec, NM 87410

DISTRICT IV  
1220 S ST. FRANCIS DR., SANTA FE, NM 87505

State of New Mexico  
Energy, Minerals and Natural Resources Department

OIL CONSERVATION DIVISION  
1220 SOUTH ST. FRANCIS DR.  
Santa Fe, New Mexico 87505

Form C-102  
Revised October 12, 2005  
Submit to Appropriate District Office  
State Lease - 4 Copies  
Fee Lease - 3 Copies

WELL LOCATION AND ACREAGE DEDICATION PLAT

☐ AMENDED REPORT

API Number <b>30-025-39004</b>	Pool Code <b>50350</b>	Pool Name <b>Penrose Skelly Grayburg</b>
Property Code	Property Name <b>EUNICE KING</b>	Well Number <b>34H</b>
OGRID No. <b>4323</b>	Operator Name <b>CHEVRON USA INC.</b>	Elevation <b>3447'</b>

Surface Location

UL or lot No.	Section	Township	Range	Lot Idn	Feet from the	North/South line	Feet from the	East/West line	County
F	28	21-S	37-E		2160	NORTH	2630	WEST	LEA

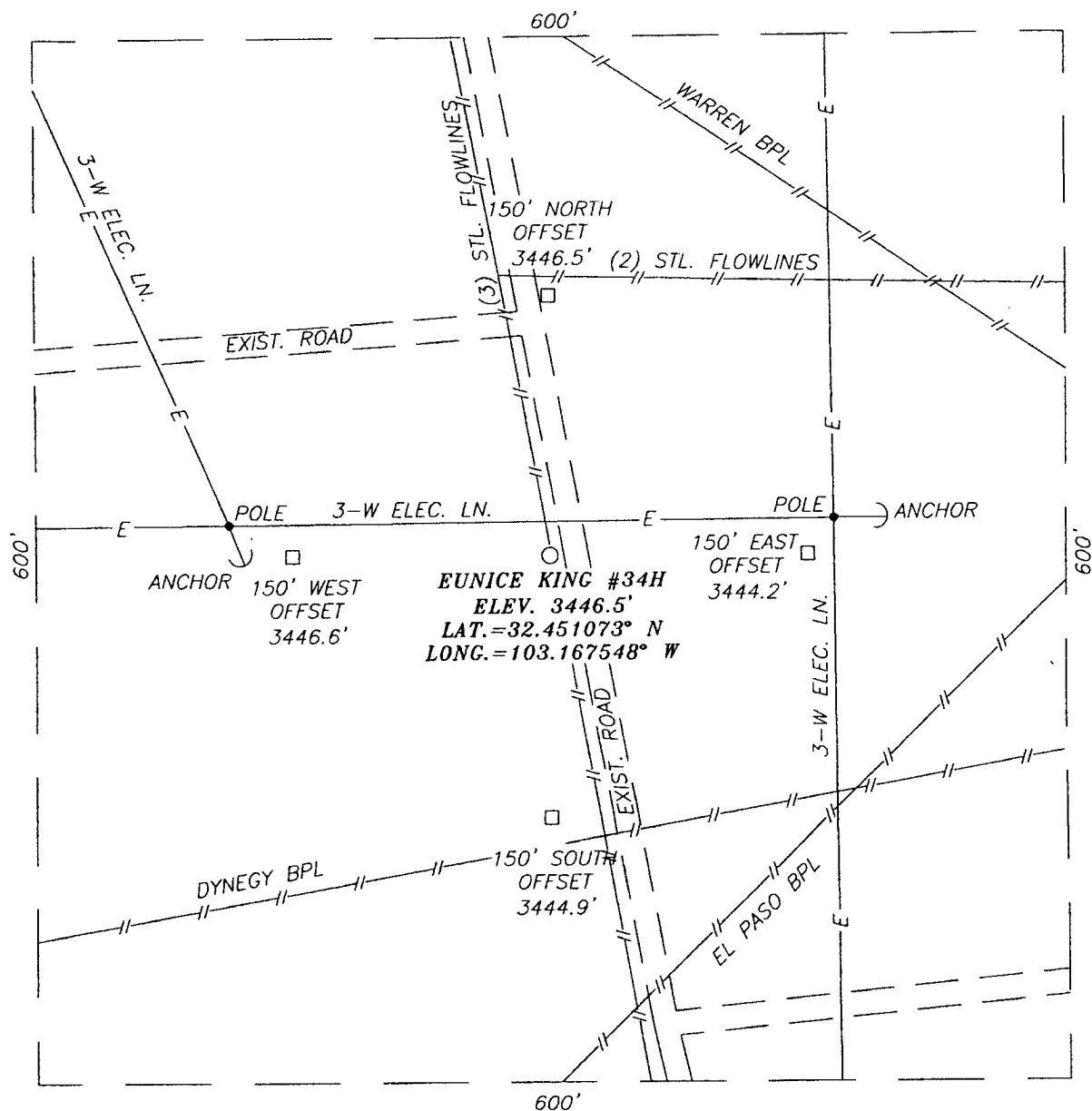
Bottom Hole Location If Different From Surface

UL or lot No.	Section	Township	Range	Lot Idn	Feet from the	North/South line	Feet from the	East/West line	County
Dedicated Acres <b>40</b>		Joint or Infill	Consolidation Code	Order No. <b>NSL-5859</b>					

NO ALLOWABLE WILL BE ASSIGNED TO THIS COMPLETION UNTIL ALL INTERESTS HAVE BEEN CONSOLIDATED  
OR A NON-STANDARD UNIT HAS BEEN APPROVED BY THE DIVISION

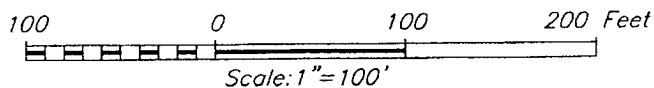
	<p><b>OPERATOR CERTIFICATION</b></p> <p>I hereby certify that the information herein is true and complete to the best of my knowledge and belief, and that this organization either owns a working interest or unleased mineral interest in the land including the proposed bottom hole location or has a right to drill this well at this location pursuant to a contract with an owner of such mineral or working interest, or to a voluntary pooling agreement or a compulsory pooling order heretofore entered by the division.</p> <p><i>Denise Pinkerton</i> Signature Date <b>Denise Pinkerton</b> Printed Name</p> <p><b>SURVEYOR CERTIFICATION</b></p> <p>I hereby certify that the well location shown on this plat was plotted from field notes of actual surveys made by me or under my supervision, and that the same is true and correct to the best of my belief.</p> <p><b>JANUARY 5, 2008</b> Date Surveyed Signature &amp; Seal of Professional Surveyor <i>[Signature]</i> Certificate No. <b>GARY EIDSON</b> 12641</p>
--	--

**SECTION 28, TOWNSHIP 21 SOUTH, RANGE 37 EAST, N.M.P.M.,**  
 LEA COUNTY, NEW MEXICO



**DIRECTIONS TO LOCATION**

FROM THE INTERSECTION OF ST. HWY. #207 AND ST. HWY. #176 GO NORTH ON ST. HWY. #207 APPROX. 0.8 MILES. TURN LEFT AND GO NORTHWEST APPROX. 0.5 MILES. TURN LEFT AND GO SOUTH APPROX. 0.1 MILE. THIS LOCATION IS APPROX. 18 FEET WEST.



**CHEVRON USA INC.**

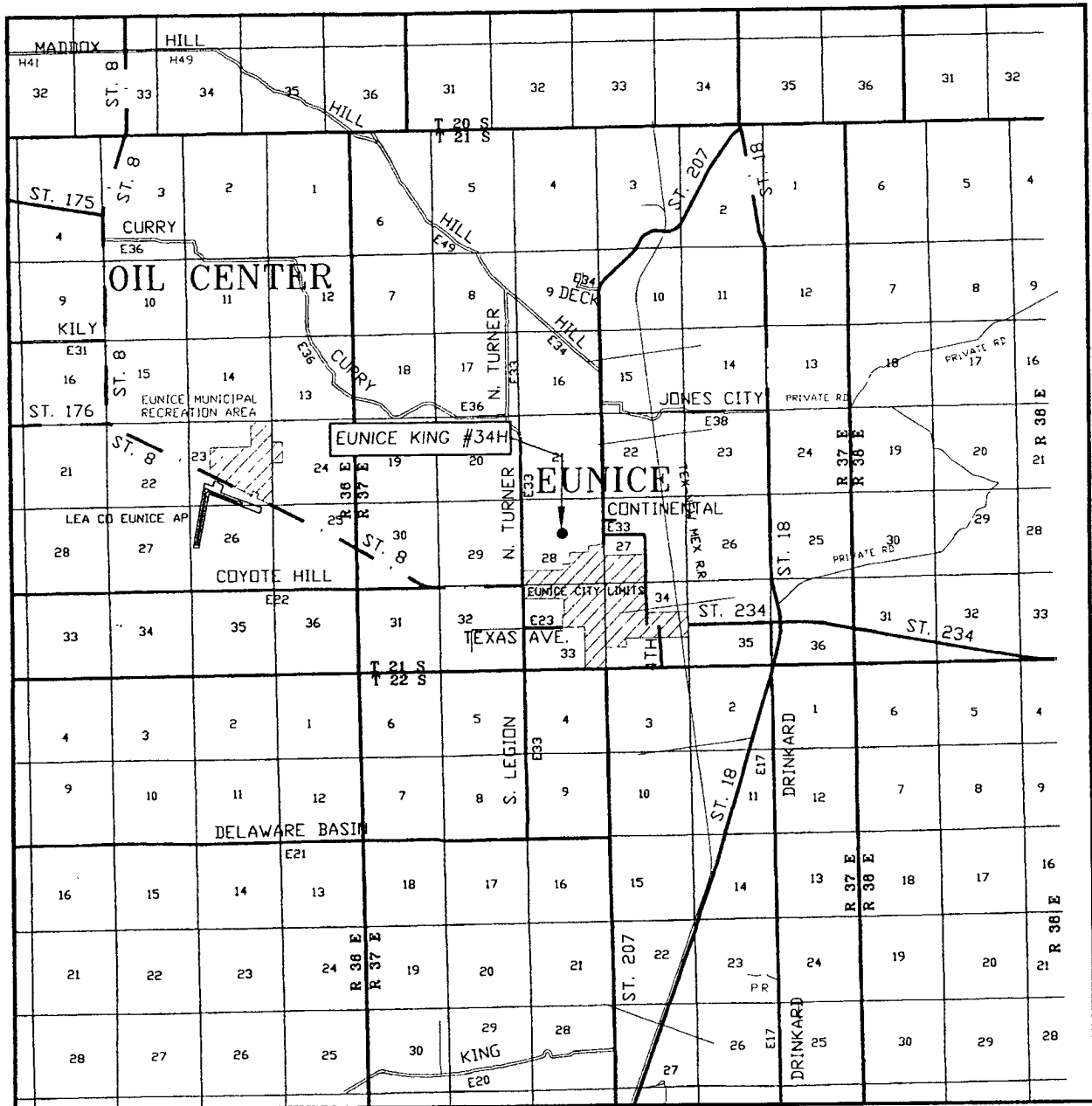
EUNICE KING #34H WELL  
 LOCATED 2160 FEET FROM THE NORTH LINE  
 AND 2630 FEET FROM THE WEST LINE OF SECTION 28,  
 TOWNSHIP 21 SOUTH, RANGE 37 EAST, N.M.P.M.,  
 LEA COUNTY, NEW MEXICO.

Survey Date: 1/5/08	Sheet 1 of 1 Sheets
W.O. Number: 07.11.1777	Dr By: LA
Date: 1/8/07	07111777
	Scale: 1"=100'



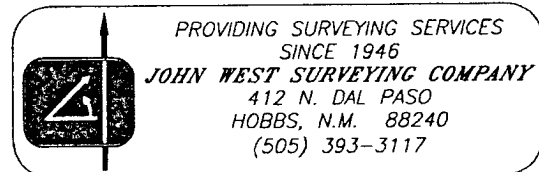
PROVIDING SURVEYING SERVICES  
 SINCE 1946  
**JOHN WEST SURVEYING COMPANY**  
 412 N. DAL PASO  
 HOBBS, N.M. 88240  
 (505) 393-3117

# VICINITY MAP

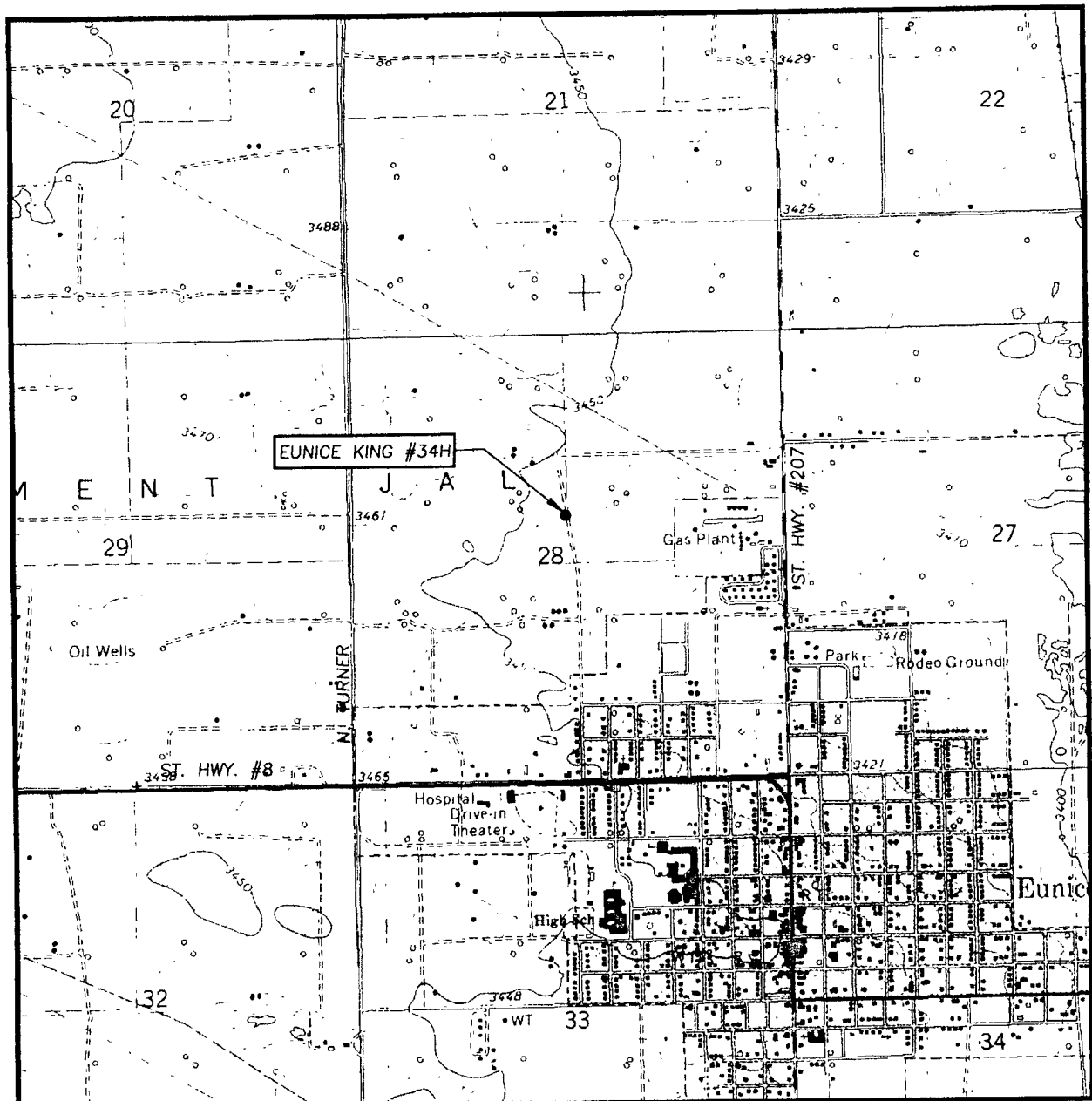


SCALE: 1" = 2 MILES

SEC. 28 TWP. 21-S RGE. 37-E  
 SURVEY N.M.P.M.  
 COUNTY LEA STATE NEW MEXICO  
 DESCRIPTION 2160' FNL & 2630' FWL  
 ELEVATION 3447'  
 OPERATOR CHEVRON U.S.A. INC.  
 LEASE EUNICE KING



# LOCATION VERIFICATION MAP



SCALE: 1" = 2000'

CONTOUR INTERVAL:  
EUNICE, N.M. - 10'

SEC. 28 TWP. 21-S RGE. 37-E

SURVEY \_\_\_\_\_ N.M.P.M.

COUNTY LEA STATE NEW MEXICO

DESCRIPTION 2160' FNL & 2630' FWL

ELEVATION 3447'

OPERATOR CHEVRON USA INC.

LEASE EUNICE KING

U.S.G.S. TOPOGRAPHIC MAP

EUNICE, N.M.

