

Submit 3 Copies To Appropriate District
Office
District I
1625 N. French Dr., Hobbs, NM 88240
District II
1301 W. Grand Ave., Artesia, NM 88210
District III
1000 Rio Brazos Rd., Aztec, NM 87410
District IV
1220 S. St. Francis Dr., Santa Fe, NM
87505

State of New Mexico
Energy, Minerals and Natural Resources

Form C-103
May 27, 2004

OIL CONSERVATION DIVISION
1220 South St. Francis Dr.
Santa Fe, NM 87505

WELL API NO.
30-025-21649

5. Indicate Type of Lease
STATE ☒ FEE ☐

6. State Oil & Gas Lease No.

7. Lease Name or Unit Agreement Name
VACUUM GLORIETA WEST UNIT

8. Well Number 14H

9. OGRID Number 4323

10. Pool name or Wildcat
VACUUM GLORIETA

SUNDRY NOTICES AND REPORTS ON WELLS
(DO NOT USE THIS FORM FOR PROPOSALS TO DRILL OR TO DEEPEN OR PLUG BACK TO A
DIFFERENT RESERVOIR USE "APPLICATION FOR PERMIT" (FORM C-101) FOR SUCH
PROPOSALS)

1. Type of Well: Oil Well ☒ Gas Well ☐ Other

2. Name of Operator
CHEVRON U.S.A. INC.

3. Address of Operator
15 SMITH ROAD, MIDLAND, TEXAS 79705

4. Well Location

Unit Letter B: 800 feet from the NORTH line and 2310 feet from the EAST line (BHL: 801' FNL, 1310 FEL, UL:A)

Section 25 Township 17-S Range 34-E NMPM County LEA

11. Elevation (Show whether DR, RKB, RT, GR, etc.)
4002' GL

Pit or Below-grade Tank Application ☐ or Closure ☐

Pit type _____ Depth to Groundwater _____ Distance from nearest fresh water well _____ Distance from nearest surface water _____

Pit Liner Thickness: _____ mil Below-Grade Tank: Volume _____ bbls: Construction Material _____

12. Check Appropriate Box to Indicate Nature of Notice, Report or Other Data

NOTICE OF INTENTION TO:

PERFORM REMEDIAL WORK ☐ PLUG AND ABANDON ☐
TEMPORARILY ABANDON ☐ CHANGE PLANS ☐
PULL OR ALTER CASING ☐ MULTIPLE COMPL ☐

SUBSEQUENT REPORT OF:

REMEDIAL WORK ☐ ALTERING CASING ☐
COMMENCE DRILLING OPNS. ☐ P AND A ☐
CASING/CEMENT JOB ☐

OTHER RE-INSTALL STRADDLE PACKER SYSTEM

OTHER:

13. Describe proposed or completed operations. (Clearly state all pertinent details, and give pertinent dates, including estimated date of starting any proposed work). SEE RULE 1103. For Multiple Completions: Attach wellbore diagram of proposed completion or recompletion.

CHEVRON U.S.A. INC. INTENDS TO RE-INSTALL A STRADDLE PACKER SYSTEM TO PREVENT WATER PRODUCTION FROM THE SUBJECT WELL'S OH LATERAL.

THE INTENDED PROCEDURE & WELLBORE DIAGRAM IS ATTACHED FOR YOUR APPROVAL.

I hereby certify that the information above is true and complete to the best of my knowledge and belief. I further certify that any pit or below-grade tank has been/will be constructed or closed according to NMOCD guidelines ☐, a general permit ☐ or an (attached) alternative OCD-approved plan ☐.

SIGNATURE Denise Pinkerton TITLE Regulatory Specialist DATE 06-30-2008

Type or print name Denise Pinkerton E-mail address: leakejd@chevron.com Telephone No. 432-687-7375

For State Use Only

APPROVED BY:

Chris Williams

OCD DISTRICT SUPERVISOR/GENERAL MANAGER

DATE JUL 03 2008

Conditions of Approval (if any):

RECEIVED

JUL 02 2008

HOBBS OCD

VGWU 14H
API No. 30-025-21649

Procedure to: Install Straddle Packer System

- 1) MIRU PU and RU. ND WH. NU BOP.
- 2) GIH w/ RBP retrieving tool. Latch onto RBP @ 5780'. POOH w/ RBP.
- 3) PU & GIH w/ 4 3/4" MT bit on bent sub and 2 3/8" PH6 tbg. Work bit in window @ 5895-5901'.
- 4) C/O OH lateral to 6951' (Note: TMD 6956' with top of fish @ 6951') Catch any samples and have analyzed by Baker Rep.
- 5) MI Peak Completions strata-pak system, Rite-wrap tbg and AS-1 pkr assembly.
- 6) GIH w/ bent sub, pump-out plug, Peak Strata pkr 10K OH double grip isolation pkr, 4 joints ~135' 2 3/8" 4.7# IPC Rite-wrap tbg, AS-1X pkr w/ O/O tool on WS. Space out to straddle heel from 5788' to +/-5922'. Set AS-1X pkr. Load and pressure tbg to set Strata pkr. Continue to pressure tbg to blow pump out plug.
- 7) RIse from O/O tool. POOH w/ WS LD.
- 8) GIH w/ production equipment as pulled. Hang well on. Clean Location RDMO. Turn well over to production.

LGB 5/13/08
BAS 5/29/08

RECEIVED
JUL 02 2008
HOBBS OCD

VGWU No. 14H
API No. 30-025-21649
Vacuum Glorieta West Unit
Lea County, NM

Engineering Comments

The technical team recommends re-installing a straddle packer system to prevent water production from the subject well's OH lateral. The previous straddle packer system effectively shut-off nearly 2000 BWPd from the San Andres kickoff point for two years. Production plots show that isolating the water zone had no adverse effects on oil production, which averaged 25 BOPd during this time. The team considered other methods of water shut-off such as using polymers and cementing a liner but rejected them as risky, and perhaps damaging to the oil interval. Therefore, the team recommends duplicating the previous system, but using the more robust Peak completions OH packer for this workover.

Economics for this well work have a DPI of 4.50.

BAS 5/29/08

RECEIVED
JUN 02 2008
HOBBS OCD

VGWU #14H Wellbore Diagram

Created: 05/14/08 By: BSPT
 Updated: By:
 Lease: Vacuum Glorieta West Unit
 Field: Vacuum Glorieta West Unit
 Surf. Loc.: 800' FNL & 2,310' FEL
 Bot. Loc.: 801' FNL & 1,310' FEL
 County: Lea St.: NM
 Status: Active Oil Well

Well #: 14H St. Lse:
 API: 30-025-21649
 Unit Ltr.: B Section: 25
 TSHP/Rng: S-17 E-34
 Unit Ltr.: A Section: 25
 TSHP/Rng: S-17 E-34
 Directions: Buckeye, NM
 Chevno: FF4689

Surface Casing

Size: 8 5/8"
 Wt., Grd.: 24#, J-55
 Depth: 1592'
 Sxs Cmt: 900
 Circulate: Yes
 TOC: Surface
 Hole Size: 12 1/4"

Production Casing

Size: 5 1/2"
 Wt., Grd.: 14#, J-55
 Depth: 6,200
 Sxs Cmt: 1,500
 Circulate: Yes
 TOC: Surface
 Hole Size: 7 7/8"

Horizontal Section

TOW: 5,895
 BOW: 5,901
 MD: 6,956
 TVD: 6,010
 Hole Size: 4 3/4"

Core

6055-76', 6076-97' in 1966

KB: 4,011
 DF: 4,010
 GL: 4,002
 Ini. Spud: 02/14/66
 Ini. Comp: 03/09/66

History

3/9/66 Initial Completion Perf 1 jspf 6039, 41, 43, 44, 46, 48, 50, 54, 56, 58, 60, 63, 65, 67, 73, 75, 77, 81, 86, 90 AC w/ 1000 gal 15% NE, 132o 0w 92g
 8/81 Acidize: AC 5500 gal
 1/89 Add perms, Acidize: Perf 2 jspf 6030-6106. AC w/ 3000 gal 15% NEFE
 1/95 TA. Set CIBP @ 5920'
 2/9/01 Sqz, Deepen, Test, TA: DO CIBP. Set cmt rtnr @ 5910, Sqz perms 6030-6106' w/ 200 sx, DO cmt, Re-sqz 75 sx, Mill on junk and deepen to 6250, Perf 6150-6200, Acidize w/ 2500 gal 15% NEFE, Sqz 100 sx three times w/ cmt rtnr, Perf 5914-66, 5982-6002, AC w/ 4000 gals 15% NEFE, DRY, Set CIBP @ 5864' w/ 35' cmt, TA'd
 10/01 Horizontal DO CIBP and cmt @ 5864', Set CIBP @ 5901, Drill lateral to 6956' MD w/ 4 3/4" bit. AC w/ 20000 gal 15% acid w/ CT unit, 29o 1410w 15g
 10/05 Shut Off Water: Dress window w/ mill, left 2 7/8" bent sub and 1 jt 2 7/8" in hole, Set Arrowset pkr @ 5788', 4 jts Rire Wrap tbg and OH pkr @ 5922 RTP.
 4/25/08 TA. water prod jump in Oct 07, suspected OH pkr leak, POOH w/ prod eqp and pkrs. Set RBP @ 5780.

RBP @ 5780'

TOW @ 5895'

BOW @ 5901'

CIBP @ 5901'

Perfs 5914-66', 5982-6006'

Sqz perms 6039-6200'

OH from 6200'-6250'

4 3/4" OH Lateral 1000'
 TVD 6010' MD 6956'

PBTD: 6,250
 TD: 6,250

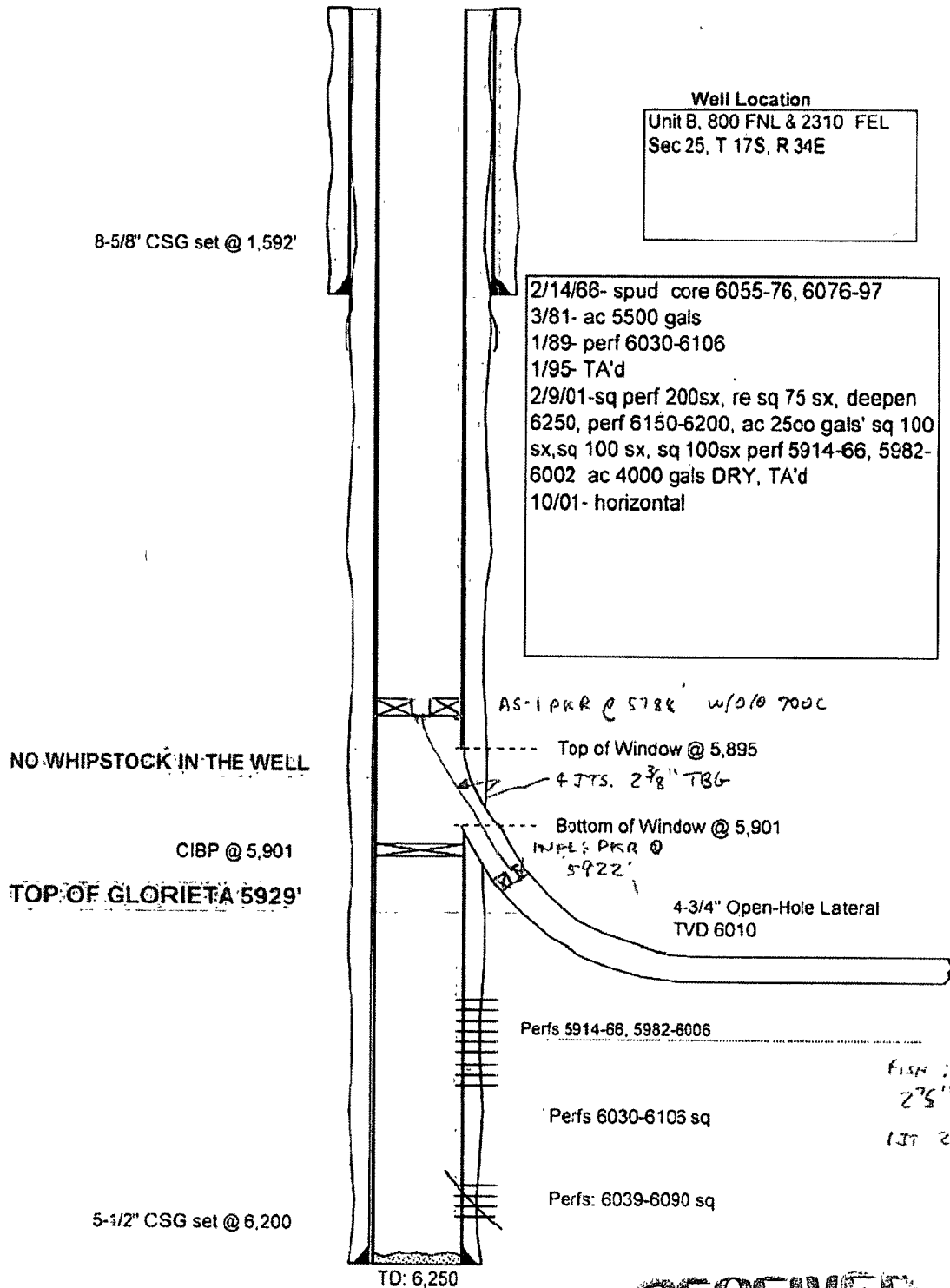
RECEIVED

02 2008

HOBBS OCD

PREVIOUS

VGWU #14H
API: 3002521649



RECEIVED

MAR 02 2008

HOBBS OCD