

UNITED STATES
DEPARTMENT OF THE INTERIOR
BUREAU OF LAND MANAGEMENT

CARLSBAD FIELD OFFICE

FORM APPROVED
OMB No. 1004-0137
Expires: March 31, 2007

SUNDRY NOTICES AND REPORTS ON WELLS

Do not use this form for proposals to drill, or to re-enter an
abandoned well. Use Form 3160-3 (APD) for such proposals.

SUBMIT IN TRIPLICATE - Other instructions on reverse side.

1. Type of Well
☒ Oil Well ☐ Gas Well ☐ Other

JUN 27 2008

2. Name of Operator
ConocoPhillips Company

3a. Address

3300N "A" Street, Bldg. 6 Midland TX 79705-5406 (432)688-6884

3b. Phone No. (include area code)

4. Location of Well (Footage, Sec., T., R., M., or Survey Description)

1310' FNL & 1310' FWL
Sec. 28, T-20-S, R-38-E

Unit D

5. Lease Serial No.

LC-031670B

6. If Indian, Allottee or Tribe Name

7. If Unit or CA/Agreement, Name and/or No.

8. Well Name and No.

Warren Unit

#322

9. API Well No.

30-025-38949

10. Field and Pool, or Exploratory Area

Warren; Drinkard/Warren; Blinberry-Tubb C

11. County or Parish, State

Lea

New Mexico

12. CHECK APPROPRIATE BOX(ES) TO INDICATE NATURE OF NOTICE, REPORT, OR OTHER DATA

TYPE OF SUBMISSION	TYPE OF ACTION			
<input checked="" type="checkbox"/> Notice of Intent	<input type="checkbox"/> Acidize	<input type="checkbox"/> Deepen	<input type="checkbox"/> Production (Start/Resume)	<input type="checkbox"/> Water Shut-Off
<input type="checkbox"/> Subsequent Report	<input type="checkbox"/> Alter Casing	<input type="checkbox"/> Fracture Treat	<input type="checkbox"/> Reclamation	<input type="checkbox"/> Well Integrity
<input type="checkbox"/> Final Abandonment Notice	<input type="checkbox"/> Casing Repair	<input type="checkbox"/> New Construction	<input type="checkbox"/> Recomplete	<input checked="" type="checkbox"/> Other Renew APD & Amend Location
	<input type="checkbox"/> Change Plans	<input type="checkbox"/> Plug and Abandon	<input type="checkbox"/> Temporarily Abandon	
	<input type="checkbox"/> Convert to Injection	<input type="checkbox"/> Plug Back	<input type="checkbox"/> Water Disposal	

13. Describe Proposed or Completed Operation (clearly state all pertinent details, including estimated starting date of any proposed work and approximate duration thereof. If the proposal is to deepen directionally or recompleat horizontally, give subsurface locations and measured and true vertical depths of all pertinent markers and zones. Attach the Bond under which the work will be performed or provide the Bond No. on file with BLM/BIA. Required subsequent reports shall be filed within 30 days following completion of the involved operations. If the operation results in a multiple completion or recompleat in a new interval, a Form 3160-4 shall be filed once testing has been completed. Final Abandonment Notices shall be filed only after all requirements, including reclamation, have been completed, and the operator has determined that the site is ready for final inspection.)

Ref. Bond #ES0085

Original location (1320' FNL & 1320' FWL) was previously approved/permitted by the BLM 04/30/07.

In order to maintain the spacing requirements as set forth by the Oil conservation Division, to remain a "standard" location; ConocoPhillips wishes to amend the location to be 1310' FNL & 1310' FWL. New survey plat is attached.

*Additionally, the original permit was subject to expire 04/30/08 we, therefore, wish to request the permit to be extended for 1 year beyond the original expiration date.

ACCEPTING FOR RECORD ONLY -- OCD
still requires form C-144 per OCD Rule 19.15.17APPROVED FOR 12 MONTH PERIOD
ENDING 4-30-0914. I hereby certify that the foregoing is true and correct
Name (Printed/Typed)

Celeste G. Dale

Title Regulatory Specialist

Signature

Date 04/25/2008

THIS SPACE FOR FEDERAL OR STATE OFFICE USE

Approved by Dorothy Moya
Conditions of approval, if any, are attached. Approval of this notice does not warrant or certify that the applicant holds legal or equitable title to those rights in the subject lease which would entitle the applicant to conduct operations thereon.

Title AFM

Date 5/19/08

Office CARLSBAD FIELD OFFICE

Title 18 U.S.C. Section 1001 and Title 43 U.S.C. Section 1212, make it a crime for any person knowingly and willfully to make to any department or agency of the United States any false, fictitious or fraudulent statements or representations as to any matter within its jurisdiction.

(Instructions on page 2)

SEE ATTACHED FOR
CONDITIONS OF APPROVAL

DISTRICT 1
1625 N. Hatch Dr., Hobbs, NM 88240

DISTRICT 1
1301 W. Grand Avenue, Artesia, NM 88210

DISTRICT 1
1000 Rio Hachos Rd., Aztec, NM 87410

DISTRICT 1
1220 S. St. Francis Dr., Santa Fe, NM 87505

State of New Mexico
Energy, Minerals & Natural Resources Department

OIL CONSERVATION DIVISION
1220 South St. Frances Dr.
Santa Fe, NM 87505

Form C-102
Revised October 12, 2005
Submit to Appropriate District Office
State Lease - 4 Copies
Fee Lease - 3 Copies

☐ AMENDED REPORT

WELL LOCATION AND ACREAGE DEDICATION PLAT

API Number	Pool Code	Pool Name
30-05-	63080	Warren; Drinkard
Property Code	Property Name	Well Number
3148	WARREN UNIT	322
GRID No.	Operator Name	Elevation
217817	CONOCOPHILLIPS COMPANY	3542'

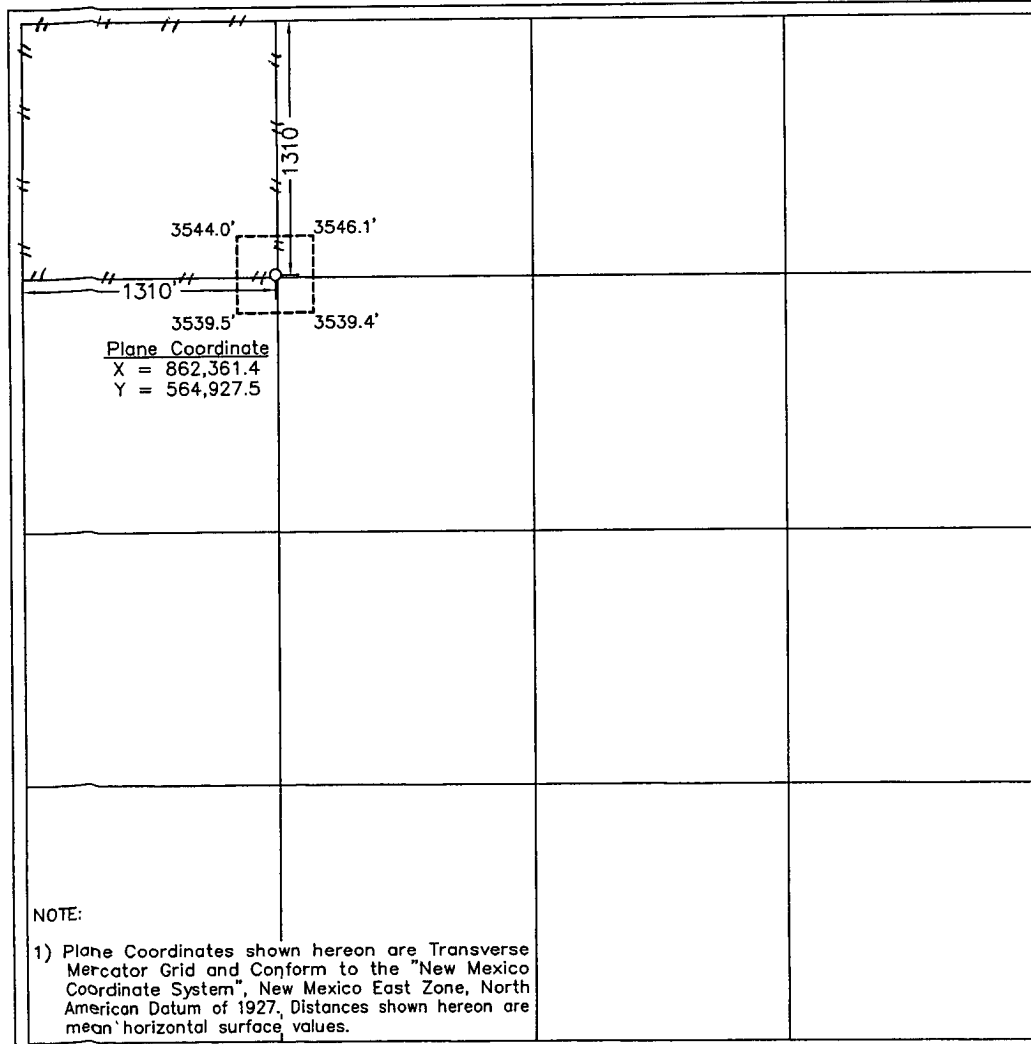
Surface Location

UL or lot No.	Section	Township	Range	Lot Idn	Feet from the	North/South line	Feet from the	East/West line	County
D	28	20 S	38 E		1310	NORTH	1310	WEST	LEA

Bottom Hole Location If Different From Surface

UL or lot No.	Section	Township	Range	Lot Idn	Feet from the	North/South line	Feet from the	East/West line	County
Dedicated Acres	Joint or Infill	Consolidation Code	Order No.						
40									

NO ALLOWABLE WILL BE ASSIGNED TO THIS COMPLETION UNTIL ALL INTERESTS HAVE BEEN CONSOLIDATED OR A NON-STANDARD UNIT HAS BEEN APPROVED BY THE DIVISION



OPERATOR CERTIFICATION

I hereby certify that the information contained herein is true and complete to the best of my knowledge and belief, and that this organization either owns a working interest or unleased mineral interest in the land including the proposed bottom hole location or has a right to drill this well at this location pursuant to a contract with an owner of such a mineral or working interest, or to a voluntary pooling agreement or a compulsory pooling order heretofore entered by the division.

Celeste G. Dale 03/25/08
Signature Date
Celeste G. Dale
Printed Name

SURVEYOR CERTIFICATION

I hereby certify that the well location shown on this plat was plotted from field notes of actual surveys made by me or under my supervision and that the same is true and correct to the best of my belief.

March 18, 2008

Date of Survey LVA
Signature & Seal of Professional Surveyor

W.O. Num. 2006-0280

W.O. Num. 2006-0280

Certificate No. MACON McDONALD 12185

DISTRICT I
1625 N. French Dr., Hobbs, NM 88240

DISTRICT II
1301 W. Grand Avenue, Artesia, NM 88210

DISTRICT III
1000 Rio Brazos Rd., Aztec, NM 87410

DISTRICT IV
1220 S. St. Francis Dr., Santa Fe, NM 87505

State of New Mexico
Energy, Minerals & Natural Resources Department

OIL CONSERVATION DIVISION
1220 South St. Frances Dr.
Santa Fe, NM 87505

Form C-102
Revised October 12, 2005
Submit to Appropriate District Office
State Lease - 4 Copies
Fee Lease - 3 Copies

☐ AMENDED REPORT

WELL LOCATION AND ACREAGE DEDICATION PLAT

API Number 30-025-	Pool Code 62965	Pool Name Warren; Blinbry-Tubb Oil & Gas
Property Code 31488	Property Name WARREN UNIT	Well Number 322
OGRD No. 217817	Operator Name CONOCOPHILLIPS COMPANY	Elevation 3542'

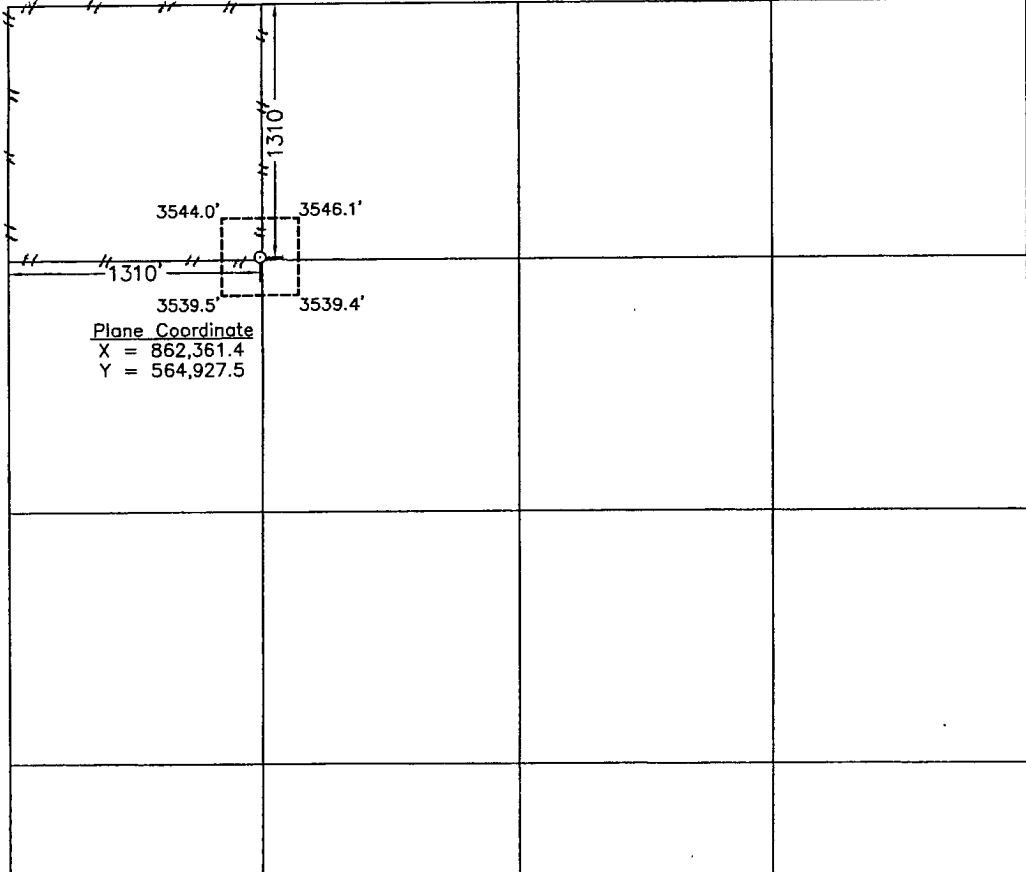
Surface Location

UL or lot No. D	Section 28	Township 20 S	Range 38 E	Lot Idn	Feet from the 1310	North/South line NORTH	Feet from the 1310	East/West line WEST	County LEA
--------------------	---------------	------------------	---------------	---------	-----------------------	---------------------------	-----------------------	------------------------	---------------

Bottom Hole Location If Different From Surface

UL or lot No.	Section	Township	Range	Lot Idn	Feet from the	North/South line	Feet from the	East/West line	County
Dedicated Acres 40	Joint or Infill	Consolidation Code	Order No.						

NO ALLOWABLE WILL BE ASSIGNED TO THIS COMPLETION UNTIL ALL INTERESTS HAVE BEEN CONSOLIDATED OR A NON-STANDARD UNIT HAS BEEN APPROVED BY THE DIVISION

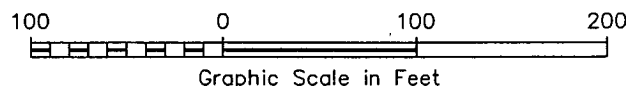
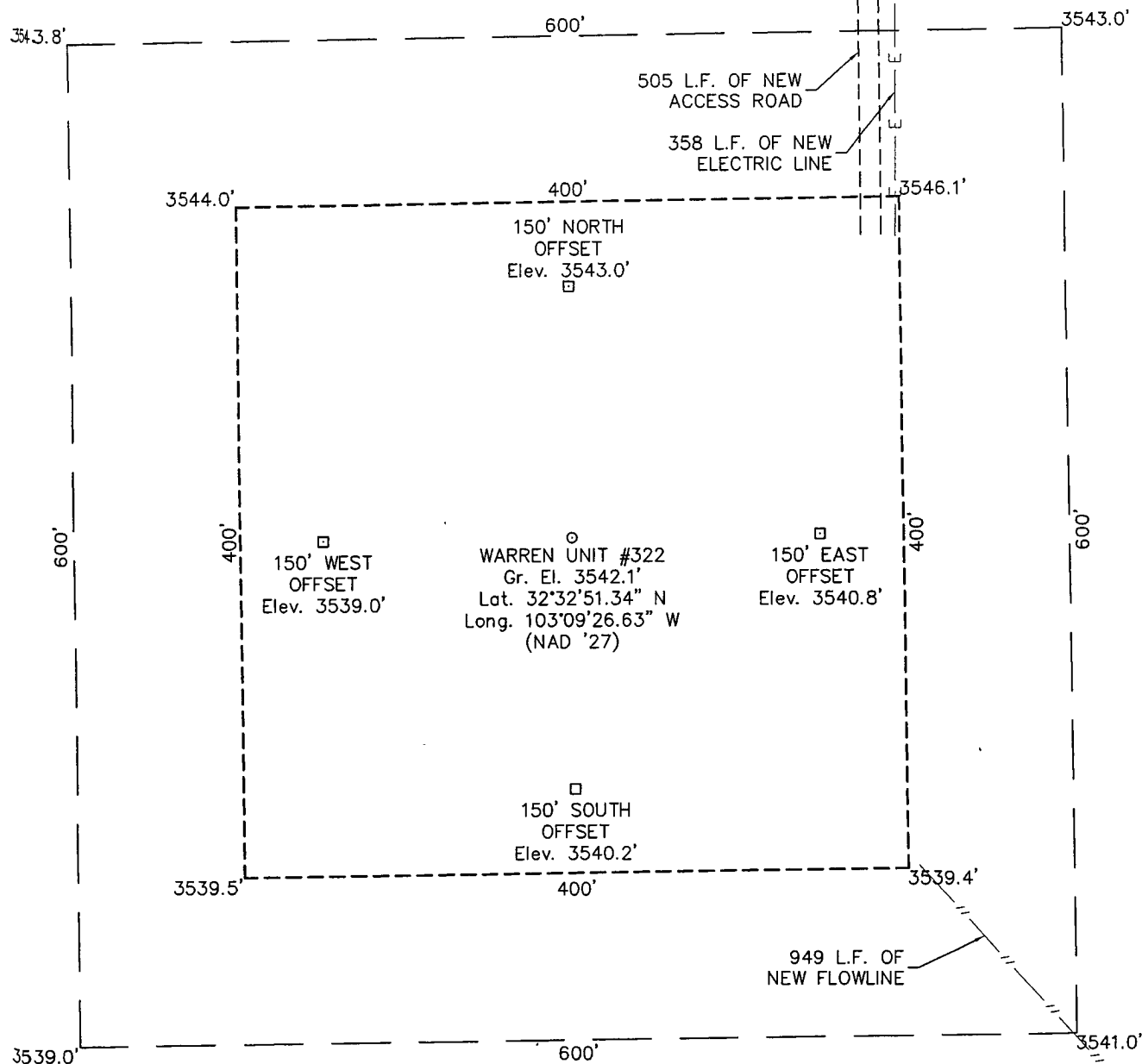
 <p>NOTE: 1) Plane Coordinates shown hereon are Transverse Mercator Grid and Conform to the "New Mexico Coordinate System", New Mexico East Zone, North American Datum of 1927. Distances shown hereon are mean horizontal surface values.</p>	<p>OPERATOR CERTIFICATION</p> <p>I hereby certify that the information contained herein is true and complete to the best of my knowledge and belief, and that this organization either owns a working interest or unleased mineral interest in the land including the proposed bottom hole location or has a right to drill this well at this location pursuant to a contract with an owner of such a mineral or working interest, or to a voluntary pooling agreement or a compulsory pooling order heretofore entered by the division.</p> <p>Signature: <i>Celeste G. Dale</i> Date: 04/25/08</p> <p>Printed Name: Celeste G. Dale</p> <p>SURVEYOR CERTIFICATION</p> <p>I hereby certify that the well location shown on this plat was plotted from field notes of actual surveys made by me or under my supervision and that the same is true and correct to the best of my belief.</p> <p>March 18, 2008</p> <p>Date of Survey: _____ LVA Signature & Seal of Professional Surveyor: <i>[Signature]</i></p> <p>W.O. Num. 2006-0280</p> <p>Certificate No. MACON McDONALD 12185</p>
---------------------------------------------------------------------------------------------------------------------------------------------------------------------------------------------------------------------------------------------------------------------------------------------------------------------------------------	-------------------------------------------------------------------------------------------------------------------------------------------------------------------------------------------------------------------------------------------------------------------------------------------------------------------------------------------------------------------------------------------------------------------------------------------------------------------------------------------------------------------------------------------------------------------------------------------------------------------------------------------------------------------------------------------------------------------------------------------------------------------------------------------------------------------------------------------------------------------------------------------------------------------------------------------------------------------------------------------------------------------------------------------------------------------------------------------------

SECTION 28, TOWNSHIP 20 SOUTH, RANGE 38 EAST, N.M.P.M.

LEA COUNTY

NEW MEXICO

L-2008-0280-A



DRIVING DIRECTIONS

FROM THE INTERSECTION OF U.S. HIGHWAY 18 AND U.S. HIGHWAY 176 IN EUNICE, NEW MEXICO GO NORTH ON SAID U.S. HIGHWAY 18 7.4 MILES TO A CATTLE GUARD ON WEST (LEFT) SIDE OF SAID U.S. HIGHWAY 18, THEN GO WEST THROUGH SAID CATTLE GUARD ON LEASE ROAD 1.3 MILES TO A LEASE ROAD ON NORTH (LEFT) SIDE OF SAID LEASE ROAD, THEN GO NORTH AND WEST ALONG SAID LEASE ROAD 0.8 MILES TO A POINT WHERE A NEW ACCESS ROAD BEGINS, THEN FOLLOW NEW ACCESS ROAD 500 FEET TO THE PROPOSED LOCATION.

CONOCO PHILLIPS

WARREN UNIT #322

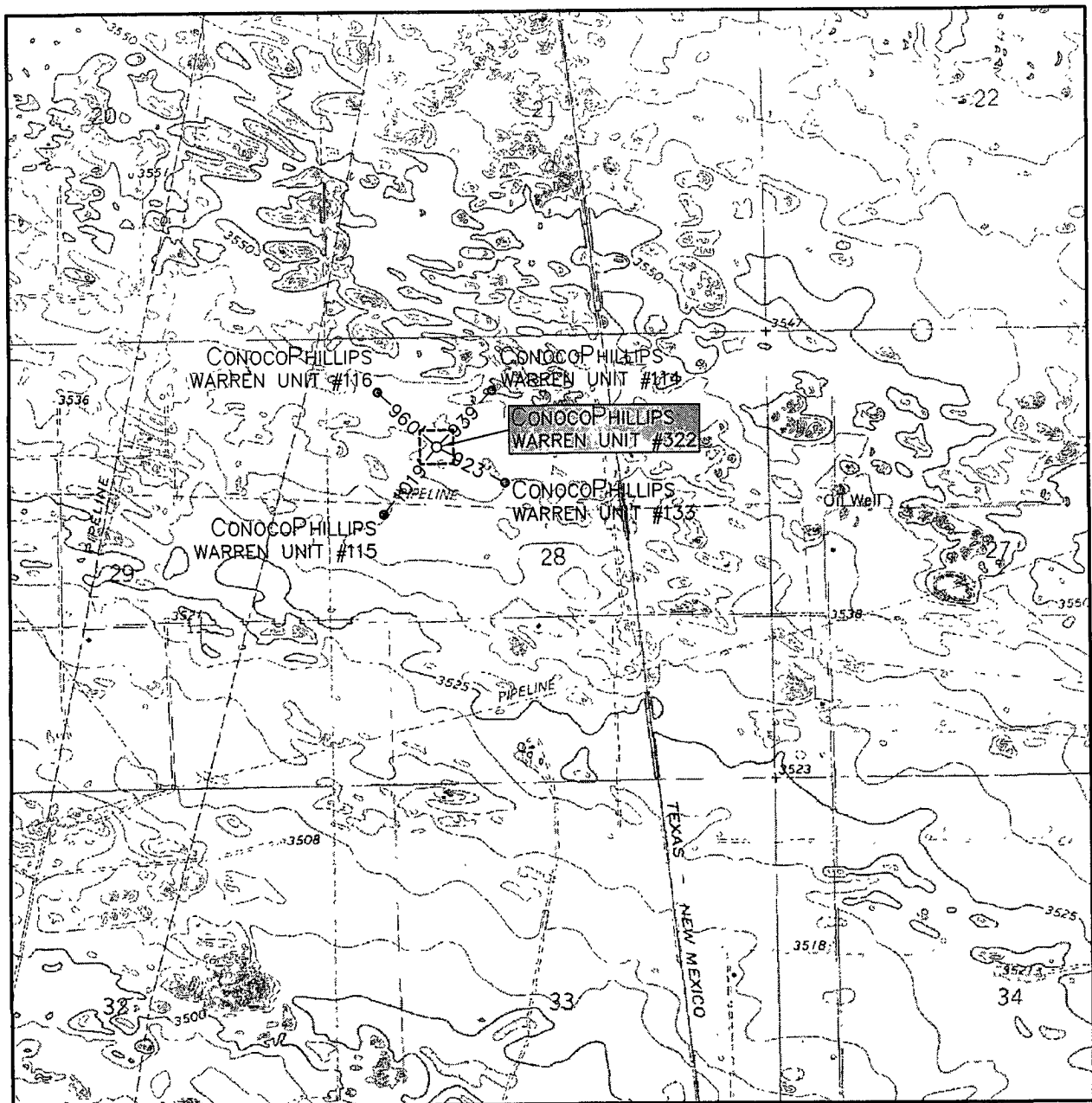
Located 1310' FNL & 1310' FWL, Section 28
Township 20 South, Range 37 East, N.M.P.M.
Lea County, New Mexico



110 W. LOUISIANA, STE. 110
MIDLAND TEXAS, 79701
(432) 687-0865 - (432) 687-0868 FAX

Drawn By: LVA	Date: April 8, 2008
Scale: 1"=100'	Field Book: 409 / 1-10
Revision Date:	Quadrangle: Hobbs SW
W.O. No: 2008-0280	Dwg. No.: L-2008-0280-A

LOCATION VERIFICATION MAP



SCALE: 1" = 2000'

CONTOUR INTERVAL:
HOBBS SW - 5'

SEC. 28 TWP. 20-S RGE. 38-E

SURVEY N.M.P.M.

COUNTY LEA

DESCRIPTION 1310' FNL & 1310' FWL

ELEVATION 3542'

OPERATOR CONOCOPHILLIPS

LEASE WARREN UNIT

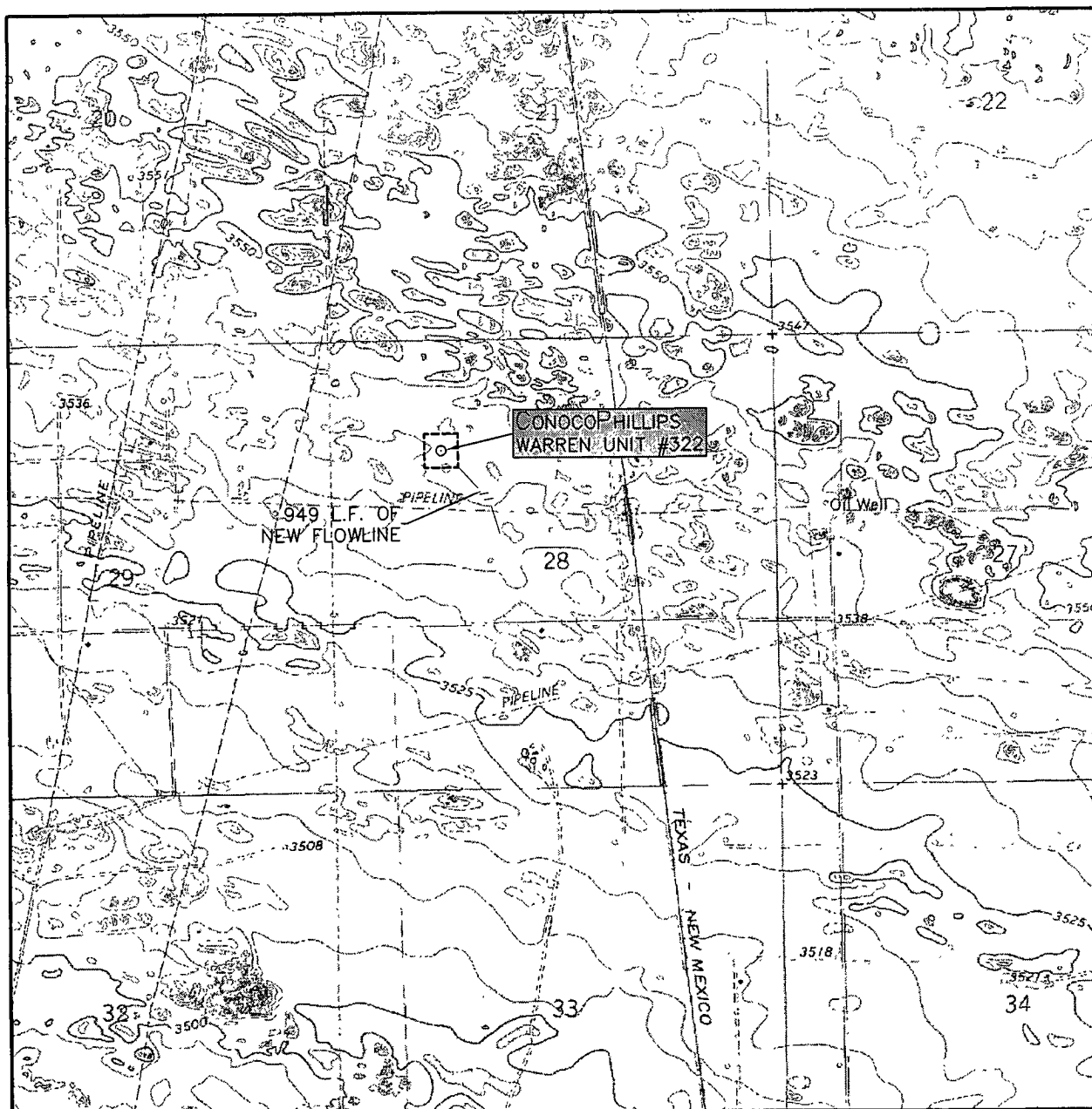
U.S.G.S. TOPOGRAPHIC MAP
HOBBS SW



**WEST
COMPANY**
of Midland, Inc.

110 W. LOUISIANA, STE. 110
MIDLAND TEXAS, 79701
(432) 687-0865 - (432) 687-0868 FAX

LOCATION VERIFICATION MAP



SCALE: 1" = 2000'

CONTOUR INTERVAL:
HOBBS SW - 5'

SEC. 28 TWP. 20-S RGE. 38-E

SURVEY N.M.P.M.

COUNTY LEA

DESCRIPTION 1310' FNL & 1310' FWL

ELEVATION 3542'

OPERATOR CONOCOPHILLIPS

LEASE WARREN UNIT

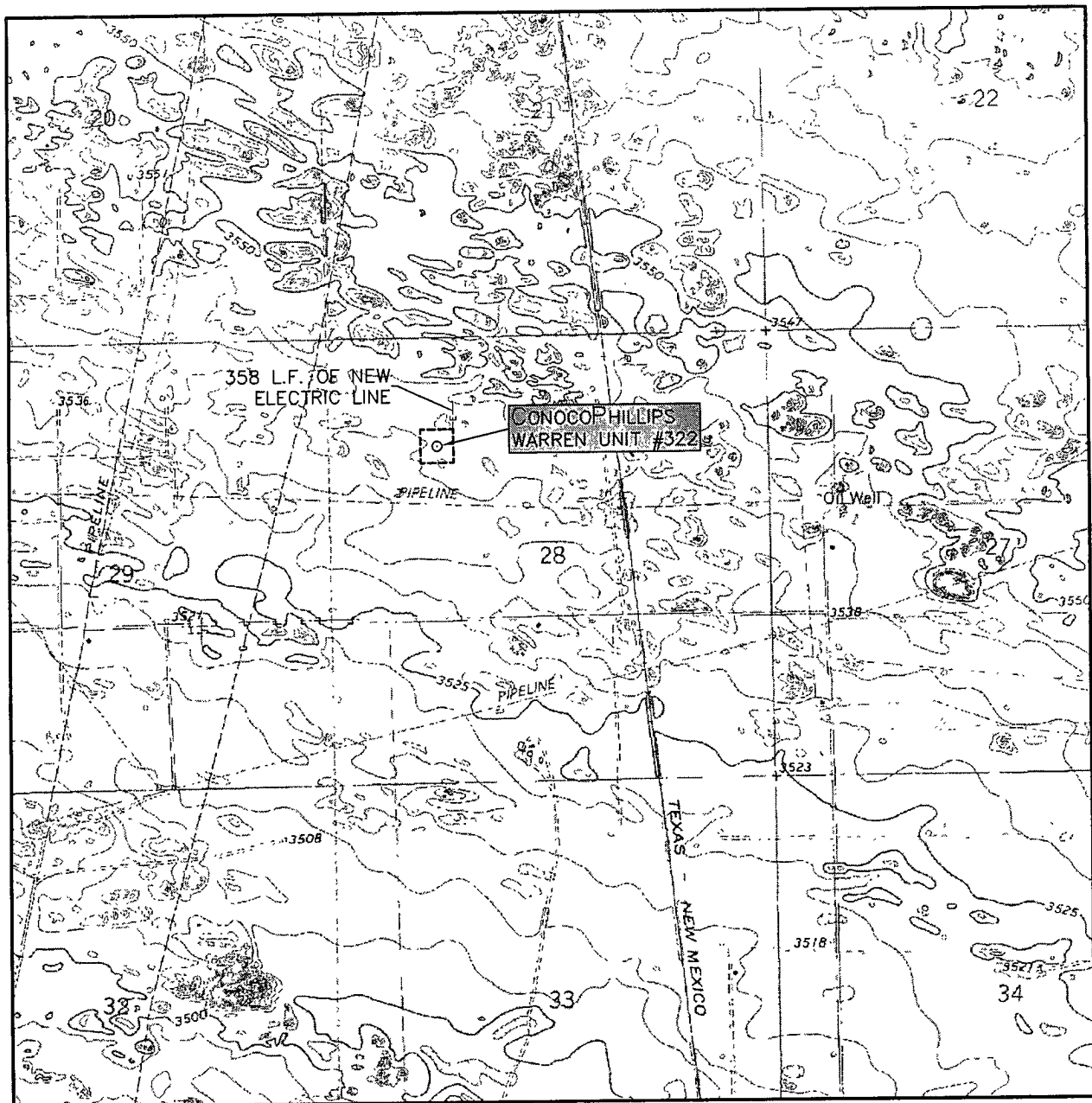
U.S.G.S. TOPOGRAPHIC MAP
HOBBS SW



**WEST
COMPANY**
of Midland, Inc.

110 W. LOUISIANA, STE. 110
MIDLAND TEXAS, 79701
(432) 687-0865 - (432) 687-0868 FAX

LOCATION VERIFICATION MAP



SCALE: 1" = 2000'

CONTOUR INTERVAL:
HOBBS SW - 5'

SEC. 28 TWP. 20-S RGE. 38-E

SURVEY _____ N.M.P.M.

COUNTY _____ LEA

DESCRIPTION 1310' FNL & 1310' FWL

ELEVATION 3542'

OPERATOR CONOCOPHILLIPS

LEASE WARREN UNIT

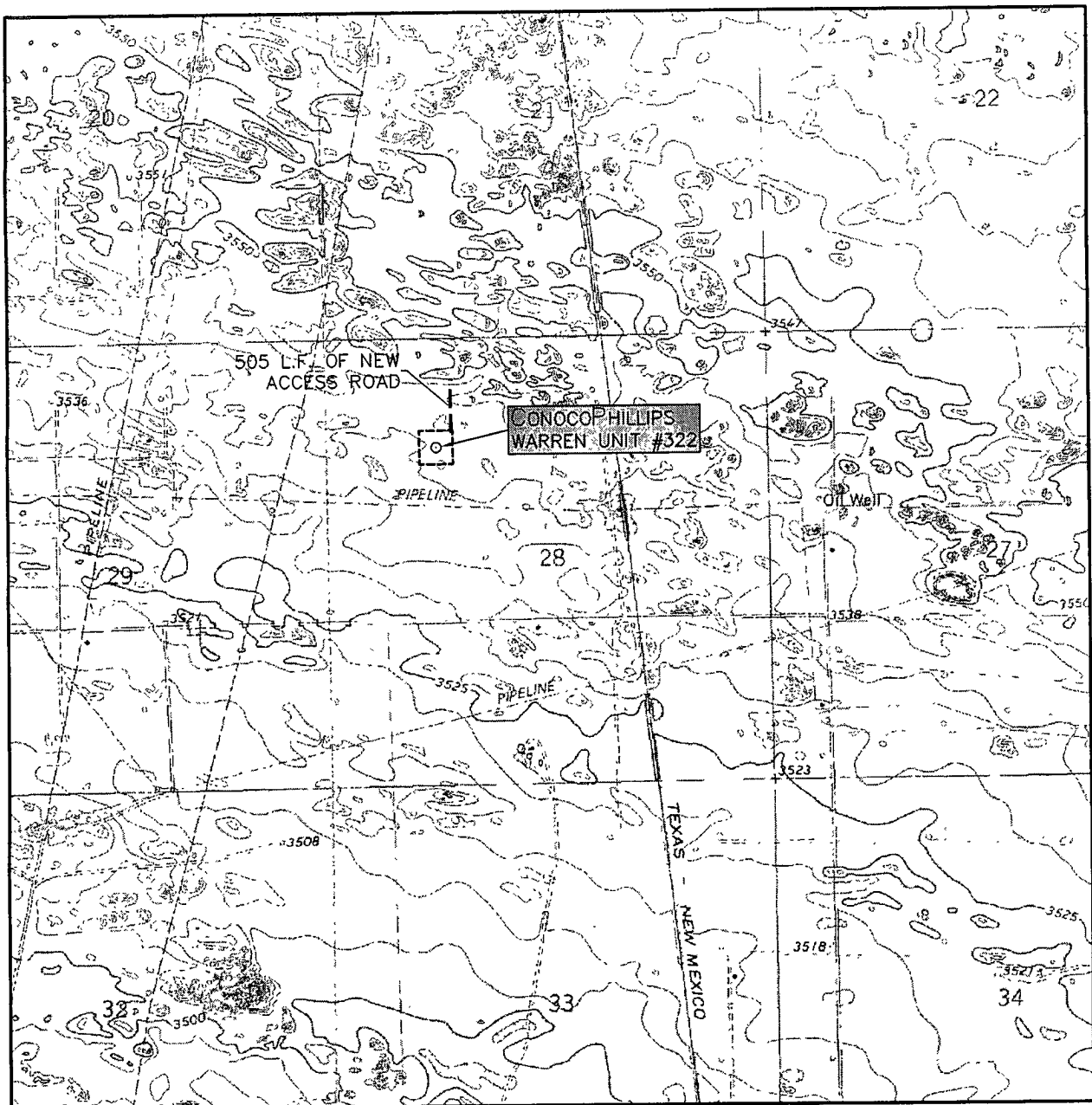
U.S.G.S. TOPOGRAPHIC MAP
HOBBS SW



**WEST
COMPANY**
of Midland, Inc.

110 W. LOUISIANA, STE. 110
MIDLAND TEXAS, 79701
(432) 687-0865 - (432) 687-0868 FAX

LOCATION VERIFICATION MAP



SCALE: 1" = 2000'

CONTOUR INTERVAL:
HOBBS SW - 5'

SEC. 28 TWP. 20-S RGE. 38-E

SURVEY N.M.P.M.

COUNTY LEA

DESCRIPTION 1310' FNL & 1310' FWL

ELEVATION 3542'

OPERATOR CONOCOPHILLIPS

LEASE WARREN UNIT

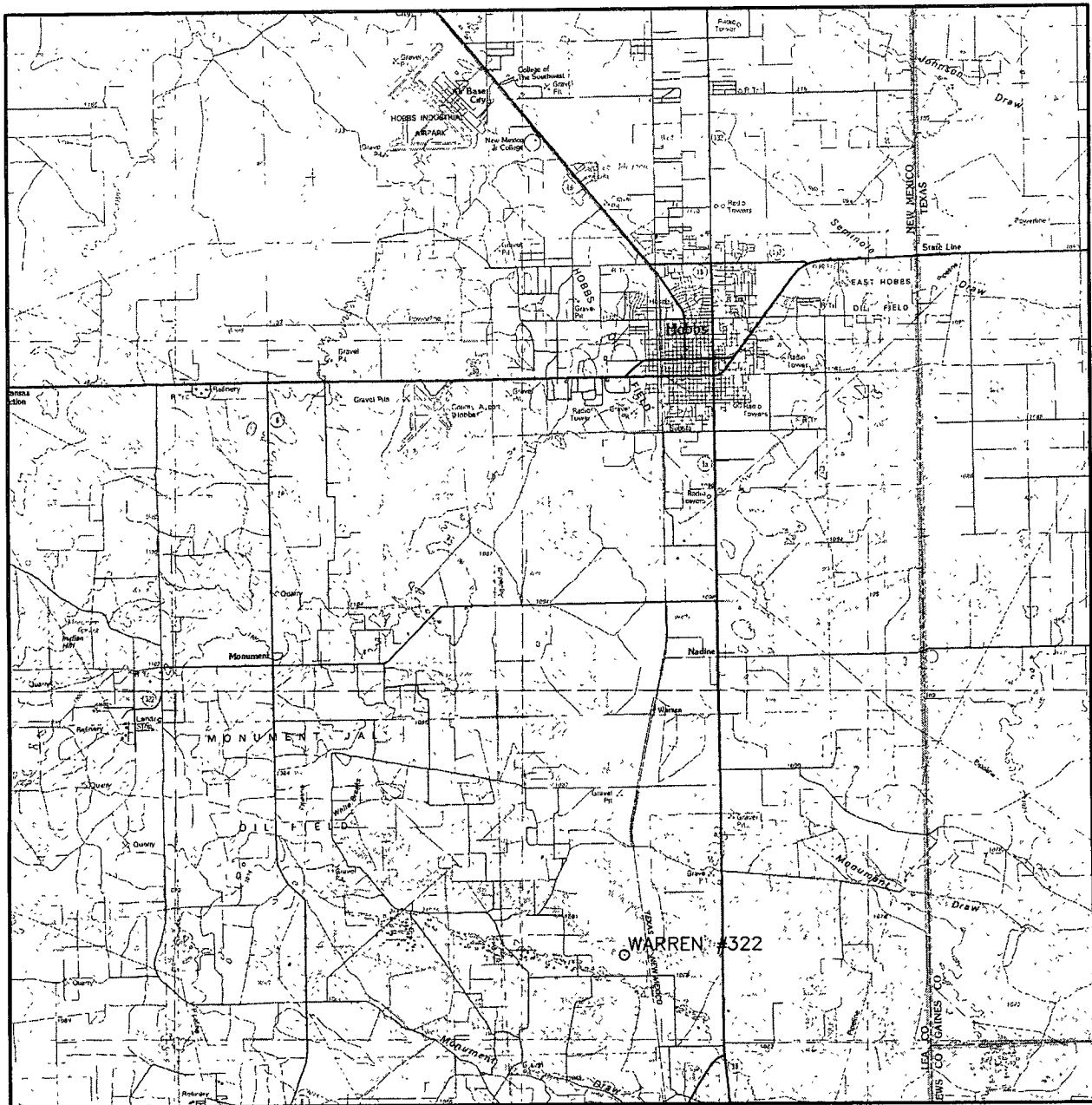
U.S.G.S. TOPOGRAPHIC MAP
HOBBS SW



**WEST
COMPANY**
of Midland, Inc.

110 W. LOUISIANA, STE. 110
MIDLAND TEXAS, 79701
(432) 687-0865 - (432) 687-0868 FAX

VICINITY MAP



SCALE: 1" = 3 MILES

SEC. 28 TWP. 20-S RGE. 38-E

SURVEY N.M.P.M.

COUNTY LEA

DESCRIPTION 1310' FNL & 1310' FWL

ELEVATION 3542'

OPERATOR CONOCOPHILLIPS

LEASE WARREN UNIT



**WEST
COMPANY**
of Midland, Inc.

110 W. LOUISIANA, STE. 110
MIDLAND TEXAS, 79701
(432) 687-0865 - (432) 687-0868 FAX

PECOS DISTRICT CONDITIONS OF APPROVAL

OPERATOR'S NAME:	ConocoPhillips Company
LEASE NO.:	NMLC031670B
WELL NAME & NO.:	Warren Unit #323
SURFACE HOLE FOOTAGE:	610' FSL & 1820' FEL
LOCATION:	Section 21, T20S., R38E., NMPM
COUNTY:	Lea County, New Mexico

I. DRILLING

A. DRILLING OPERATIONS REQUIREMENTS

The BLM is to be notified a minimum of **4 hours** in advance for a representative to witness:

- a. Spudding well
- b. Setting and/or Cementing of all casing strings
- c. BOP/BOPE tests

☒ **Lea County**

Call the Hobbs Field Station, 414 West Taylor, Hobbs NM 88240,
(575) 393-3612

1. A Hydrogen Sulfide (H₂S) Drilling Plan should be activated 500 feet prior to drilling into the **Grayburg Formation. If Hydrogen Sulfide is encountered, please report measured amounts and formations to the BLM.**
2. Unless the production casing has been run and cemented or the well has been properly plugged, the drilling rig shall not be removed from over the hole without prior approval.
3. Floor controls are required for 3M or Greater systems. These controls will be on the rig floor, unobstructed, readily accessible to the driller and will be operational at all times during drilling and/or completion activities. Rig floor is defined as the area immediately around the rotary table; the area immediately above the substructure on which the draw works are located, this does not include the dog house or stairway area.

B. CASING

Changes to the approved APD casing and cement program require submitting a sundry and receiving approval prior to work. Note: All casing shall meet or exceed API standards for new casing. Onshore Order #2. III. B. 1. a

Centralizers required on surface casing per Onshore Order 2.III.B.1.f.

Provide compressive strengths including hours to reach required 500 pounds compressive strength prior to cementing each casing string.

No pea gravel permitted for remedial or fall back remedial work without prior authorization from the BLM engineer.

All casing strings will be tested as per Onshore Order 2.III.B.1.h prior to drilling shoe plug.

Possible lost circulation in the Glorieta Formation.

1. The **8-5/8 inch** surface casing shall be set at **approximately 1450 - 1500 feet (a minimum of 25 feet into the Rustler Anhydrite and above the salt)** and cemented to the surface. **If salt is penetrated surface casing shall be set 25 feet above the salt.**
 - a. If cement does not circulate to the surface, the appropriate BLM office shall be notified and a temperature survey utilizing an electronic type temperature survey with surface log readout will be used or a cement bond log shall be run to verify the top of the cement.
 - b. Wait on cement (WOC) time for a primary cement job will be a minimum 18 hours for a water basin, 24 hours in the potash area, or 500 pounds compressive strength, whichever is greater. (This is to include the lead cement).
 - c. Wait on cement (WOC) time for a remedial job will be a minimum of 4 hours after bringing cement to surface or 500 pounds compressive strength, whichever is greater.
 - d. If cement falls back, remedial cementing will be done prior to drilling out that string.
2. The minimum required fill of cement behind the **5-1/2 inch** production casing is:
 - ☒ Cement to surface. If cement does not circulate, contact the appropriate BLM office.

3. If a Two-Stage cementing option is used the minimum required fill of cement behind the **5-1/2 inch** production casing is:

- a. **First stage to DV tool, cement shall:**

- ☒ Cement to circulate. If cement does not circulate, contact the appropriate BLM office, before proceeding with second stage cement job.

- b. **Second stage above DV tool, cement shall:**

- ☒ Cement to circulate. If cement does not circulate, contact the appropriate BLM office and a Temperature Survey or Cement Bond Log will be required prior to any remedial work being done.

4. If hardband drill pipe is rotated inside casing, returns will be monitored for metal. If metal is found in samples, drill pipe will be pulled and rubber protectors which have a larger diameter than the tool joints of the drill pipe will be installed prior to continuing drilling operations.

C. PRESSURE CONTROL

1. All blowout preventer (BOP) and related equipment (BOPE) shall comply with well control requirements as described in Onshore Oil and Gas Order No. 2 and API RP 53 Sec. 17.
2. Minimum working pressure of the blowout preventer (BOP) and related equipment (BOPE) required for drilling below the surface casing shoe shall be 3000 (3M) psi.
3. The appropriate BLM office shall be notified a minimum of **4 hours** in advance for a representative to witness the tests.
 - a. The tests shall be done by an independent service company.
 - b. The results of the test shall be reported to the appropriate BLM office.
 - c. All tests are required to be recorded on a calibrated test chart. A copy of the BOP/BOPE test chart and a copy of independent service company test will be submitted to the appropriate BLM office.
 - d. The BOP/BOPE test shall include a low pressure test from 250 to 300 psi. The test will be held for a minimum of 10 minutes if test is done with a test plug and 30 minutes without a test plug.

D. DRILL STEM TEST

If drill stem tests are performed, Onshore Order 2.III.D shall be followed.

JDW 5/12/08