

RECEIVED  
JUL 18 2004  
UNITED STATES  
DEPARTMENT OF THE INTERIOR  
BUREAU OF LAND MANAGEMENT  
WELL COMPLETION OR RECOMPLETION REPORT AND LOGFORM APPROVED  
OMB NO. 1004-0137  
Expires: March 31, 20071a. Type of Well ☒ Oil Well ☐ Gas Well ☐ Dry ☐ Otherb. Type of Completion: ☐ New Well ☐ Work Over ☐ Deepen ☐ Plug Back ☐ Diff. Resvr.,  
Other Return to production2. Name of Operator CELERO ENERGY II, LP.3. Address 400 W. ILLINOIS, STE 1601, MIDLAND, TX 797013a. Phone No. (include area code)  
432-686-1883

4. Location of Well (Report location clearly and in accordance with Federal requirements)\*

At surface 990' FSL & 1650' FEL Unit 8

At top prod. interval reported below

At total depth

14. Date Spudded

15. Date T.D. Reached

16. Date Completed

☐ D & A ☐ Ready to Prod.18. Total Depth: MD 2856  
TVD19. Plug Back T.D.: MD 2856'  
TVD20. Depth Bridge Plug Set: MD  
TVD

21. Type Electric &amp; Other Mechanical Logs Run (Submit copy of each)

GR/CCL/CN & CBL22. Was well cored? ☒ No ☐ Yes (Submit analysis)  
Was DST run? ☒ No ☐ Yes (Submit report)  
Directional Survey? ☒ No ☐ Yes (Submit copy)

23. Casing and Liner Record (Report all strings set in well)

Hole Size	Size/Grade	Wt. (#/ft.)	Top (MD)	Bottom (MD)	Stage Cementer Depth	No. of Sk. & Type of Cement	Slurry Vol. (BBL)	Cement Top*	Amount Pulled
8 5/8"	J-55	24#		102'		50sx		SURFACE	
4 1/2"	J-55	9.5#	2264'	2825'		100sx		DNC	

24. Tubing Record

Size	Depth Set (MD)	Packer Depth (MD)	Size	Depth Set (MD)	Packer Depth (MD)	Size	Depth Set (MD)	Packer Depth (MD)
2 7/8"	2774'							

25. Producing Intervals

Formation	Top	Bottom	Perforated Interval	Size	No. Holes	Perf. Status
A) QUEEN	2796'		2806-2810'			4 SPF
B)			2798-2806'			4 SPF
C)			2796-2811'			4 SPF
D)						

26. Perforation Record

27. Acid, Fracture, Treatment, Cement Squeeze, etc.

Depth Interval	Amount and Type of Material
2796-2811'	1000 GAL XYLENE, 2000 GAL 7 1/2% NEFE ACID & 1500# ROCK SALT

28. Production - Interval A

Date First Produced	Test Date	Hours Tested	Test Production	Oil BBL	Gas MCF	Water BBL	Oil Gravity Corr. API	Gas Gravity	Production Method
			→						
Choke Size	Tbg. Press. Flwg. SI	Csg. Press.	24 Hr. Rate	Oil BBL	Gas MCF	Water BBL	Gas/Oil Ratio	Well Status	
			→						

28a. Production - Interval B

Date First Produced	Test Date	Hours Tested	Test Production	Oil BBL	Gas MCF	Water BBL	Oil Gravity Corr. API	Gas Gravity	Production Method
			→						
Choke Size	Tbg. Press. Flwg. SI	Csg. Press.	24 Hr. Rate	Oil BBL	Gas MCF	Water BBL	Gas/Oil Ratio	Well Status	
			→						

\*(See instructions and spaces for additional data on page 2)

APPROVED

JAN 14 2008

GARY GOURLEY  
PETROLEUM ENGINEER

KE

## 28b. Production - Interval C

Date First Produced	Test Date	Hours Tested	Test Production →	Oil BBL	Gas MCF	Water BBL	Oil Gravity Corr. API	Gas Gravity	Production Method
Choke Size	Tbg. Press. Flwg. SI	Csg. Press.	24 Hr. Rate →	Oil BBL	Gas MCF	Water BBL	Gas/Oil Ratio	Well Status	

## 28c. Production - Interval D

Date First Produced	Test Date	Hours Tested	Test Production →	Oil BBL	Gas MCF	Water BBL	Oil Gravity Corr. API	Gas Gravity	Production Method
Choke Size	Tbg. Press. Flwg. SI	Csg. Press.	24 Hr. Rate →	Oil BBL	Gas MCF	Water BBL	Gas/Oil Ratio	Well Status	

29. Disposition of Gas (Sold, used for fuel, vented, etc.)

## 30. Summary of Porous Zones (Include Aquifers):

Show all important zones of porosity and contents thereof: Cored intervals and all drill-stem tests, including depth interval tested, cushion used, time tool open, flowing and shut-in pressures and recoveries.

## 31. Formation (Log) Markers

Formation	Top	Bottom	Descriptions, Contents, etc.	Name	Top Meas. Depth
QUEEN	2796'		<p>RECEIVED</p> <p>JUL 18 2008</p> <p>HOBBS OCD</p>	<p>RECEIVED</p> <p>HOBBS OCD</p>	

32. Additional remarks (include plugging procedure):

33. Indicate which items have been attached by placing a check in the appropriate boxes:

- ☐ Electrical/Mechanical Logs (1 full set req'd.)    ☐ Geologic Report    ☐ DST Report    ☐ Directional Survey  
☐ Sundry Notice for plugging and cement verification    ☐ Core Analysis    ☐ Other:

34. I hereby certify that the foregoing and attached information is complete and correct as determined from all available records (see attached instructions)\*

Name (please print) HAYLIE URIASTitle OPERATIONS TECH

Signature

Haylie Urias

Date

12-20-07

Title 18 U.S.C. Section 1001 and Title 43 U.S.C. Section 1212, make it a crime for any person knowingly and willfully to make to any department or agency of the United States any false, fictitious or fraudulent statements or representations as to any matter within its jurisdiction.

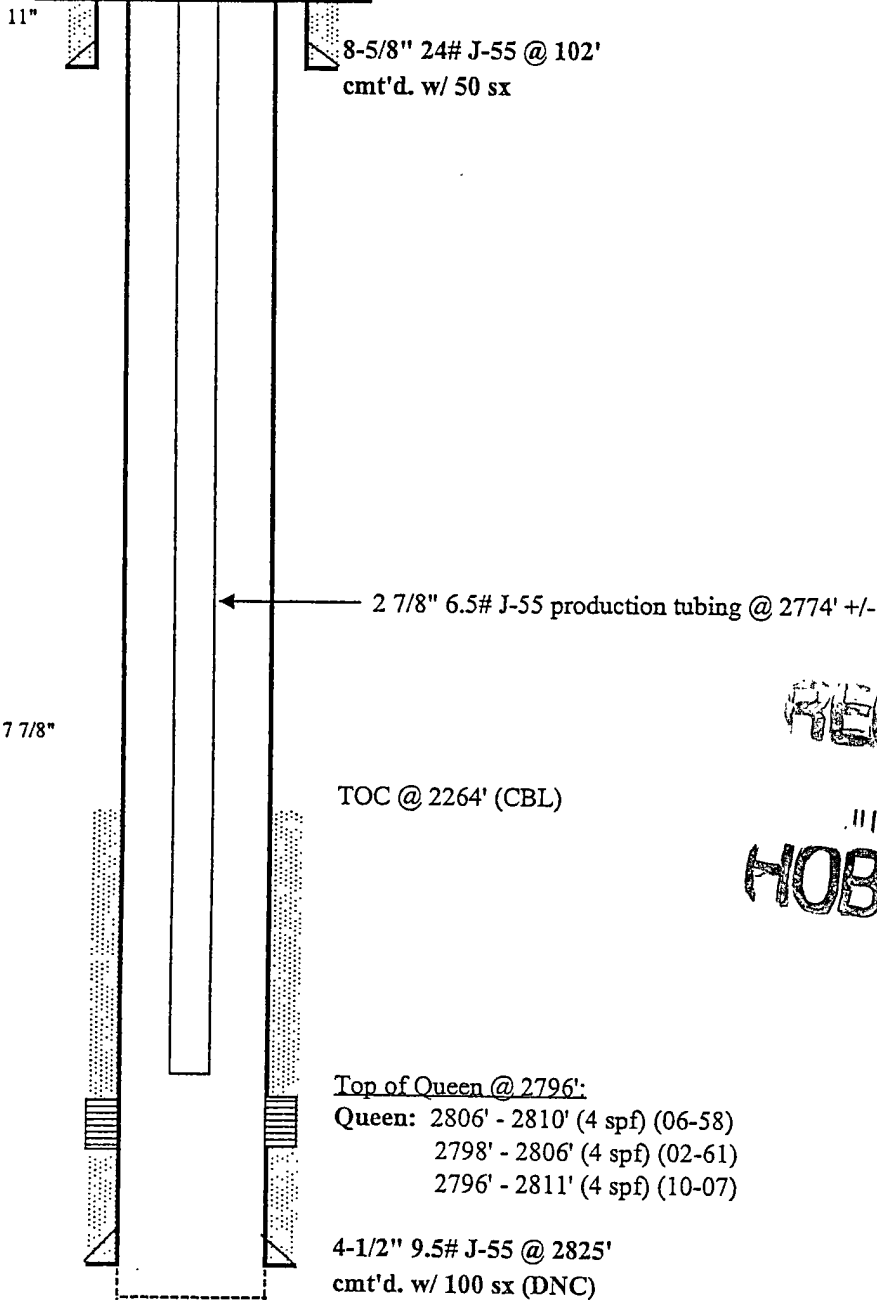
# CELERO ENERGY

FIELD: Caprock  
LEASE/UNIT: Trigg Federal  
COUNTY: Chaves

DATE: Nov. 08, 2007  
BY: JEA  
WELL: 13  
STATE: New Mexico

Location: 990' FSL & 1650' FEL, Sec 4O, T14S, R31ECM  
SPUD: 06/19/58 COMP: 06/58  
CURRENT STATUS: Producer  
Original Well Name: Federal Trigg #13-4

KB = 4,198'  
GL = 4,194'  
API = 30-005-00982



RECEIVED  
OCT 18 2008  
HOBBS OCD

11/8/2007

Trigg Federal #13