

District I
1625 N French Dr., Hobbs, NM 88240
District II
1301 W Grand Avenue, Artesia, NM 88210
District III
1000 Rio Brazos Road, Aztec, NM 87410
District IV
1220 S St. Francis Dr., Santa Fe, NM 87505

State of New Mexico
Energy Minerals and Natural Resources

Form C-101
June 16, 2008

Oil Conservation Division
1220 South St. Francis Dr.
Santa Fe, NM 87505

Submit to appropriate District Office

☐ AMENDED REPORT

APPLICATION FOR PERMIT TO DRILL, RE-ENTER, DEEPEN, PLUGBACK, OR ADD A ZONE

¹ Operator Name and Address VANGUARD PERMIAN, LLC. 1209 SOUTH MAIN LOVINGTON, NEW MEXICO 88260		² OGRID Number 258350
		³ API Number 30 - 025-39047
⁴ Property Code 37268	⁵ Property Name STATE SEC. 12	⁶ Well No. 1
⁹ Proposed Pool 1 LOVINGTON-PADDOCK (40660) ✓		¹⁰ Proposed Pool 2

⁷ Surface Location

UL or lot no	Section	Township	Range	Lot Idn	Feet from the	North/South line	Feet from the	East/West line	County
E	12	17S	36E		151650'	NORTH	330'	WEST	LEA

⁸ Proposed Bottom Hole Location If Different From Surface

UL or lot no	Section	Township	Range	Lot Idn	Feet from the	North/South line	Feet from the	East/West line	County

Additional Well Information

¹¹ Work Type Code N	¹² Well Type Code O	¹³ Cable/Rotary ROTARY	¹⁴ Lease Type Code S	¹⁵ Ground Level Elevation 3825'
¹⁶ Multiple NO	¹⁷ Proposed Depth 6450'	¹⁸ Formation PADDOCK	¹⁹ Contractor	²⁰ Spud Date WHEN APPROVED

²¹ Proposed Casing and Cement Program

Hole Size	Casing Size	Casing weight/foot	Setting Depth	Sacks of Cement	Estimated TOC
26"	20"	Conductor	40'	Redi-mix	Surface
17 1/2"	13 3/8"	48#	500'	350 Sx.	Surface
11"	8 5/8"	32#	4500'	1015 Sx.	Surface
7 7/8"	4 1/2"	11.6#	6450'	850 Sx.	Surface

²² Describe the proposed program. If this application is to DEEPEN or PLUG BACK, give the data on the present productive zone and proposed new productive zone
Describe the blowout prevention program, if any Use additional sheets if necessary

SEE ATTACHED SHEET

Permit Expires 2 Years From Approval
Date Unless Drilling Underway

RECEIVED

HOBBS OL

²³ I hereby certify that the information given above is true and complete to the best of my knowledge and belief		OIL CONSERVATION DIVISION	
Signature: Joe T. Janica		Approved by: Chris Williams	
Printed name: Joe T. Janica		Title: OC DISTRICT SUPERVISOR/GENERAL MANAGER	
Title: Permit Eng.		Approval Date: JUL 24 2008	Expiration Date:
E-mail Address: joejanica@valornet.com			
Date: 07/21/08	Phone: 575-391-8503	Conditions of Approval Attached <input type="checkbox"/>	

1. Drill 26" hole to 40'. Set 40' of 20" conductor pipe and cement to surface with Redi-mix.
2. Drill 17½" hole to 500'. Run and set 500' of 13 3/8" 48# H-40 ST&C casing. Cement with 150 Sx. of 35/65 Class "C" POZ, + 5% Salt, + 10% Bentonite, + 5# Gilsonite/Sx., + .125 Polyflakes/Sx. Yield 1.94, tail in with 200 Sx. of Class "C" cement + 2% CaCl, Yield 1.34. Circulate cement to surface.
3. Drill 11" hole to 4500'. Run and set 4500' of 8 5/8" 32# J-55 ST&C casing. Cement with 815 Sx. of 50/50 Class "C" POZ, + 5% Salt, + 10% Bentonite, + 5# Gilsonite/Sx., + .125# Polyflakes/Sx., + .2% Antifoamer, Yield 2.47. Tail in with 200 Sx. of Class "C" cement + .1% retarder. Yield 1.32, circulate cement to surface.
4. Drill 7 7/8" hole to 6450'. Run and set 6450' of 4½" 11.6# J-55 LT&C casing. Cement with 400 Sx. of 50/50 Class "H" POZ cement, + 5% Salt, + 10% Bentonite, + .2% Dispersant, + .2% Uniflac, + .25% Retarder, + .2% Antifoamer, Yield 2.47. Tail in with 450 Sx. of TXI Light weight cement + 1% Salt, + .3% Uniflac, + .1% dispersant, + .3% Retarder, Yield 1.4, circulate cement to surface.

DISTRICT I
1625 N FRENCH DR., HOBBS, NM 88240

State of New Mexico
Energy, Minerals and Natural Resources Department

DISTRICT II
1301 W. GRAND AVENUE, ARTESIA, NM 88210

DISTRICT III
1000 Rio Brazos Rd., Aztec, NM 87410

OIL CONSERVATION DIVISION
1220 SOUTH ST. FRANCIS DR.
Santa Fe, New Mexico 87505

Form C-102
Revised October 12, 2005
Submit to Appropriate District Office
State Lease - 4 Copies
Fee Lease - 3 Copies

DISTRICT IV
1220 S. ST. FRANCIS DR., SANTA FE, NM 87505

WELL LOCATION AND ACREAGE DEDICATION PLAT

☐ AMENDED REPORT

API Number 30-025-39047	Pool Code 40660 ✓	Pool Name LOVINGTON-PADDOCK ✓
Property Code 37268	Property Name STATE SECTION 12	Well Number 1
OGRID No. 258350	Operator Name VANGUARD PERMIAN, LLC	Elevation 3825'

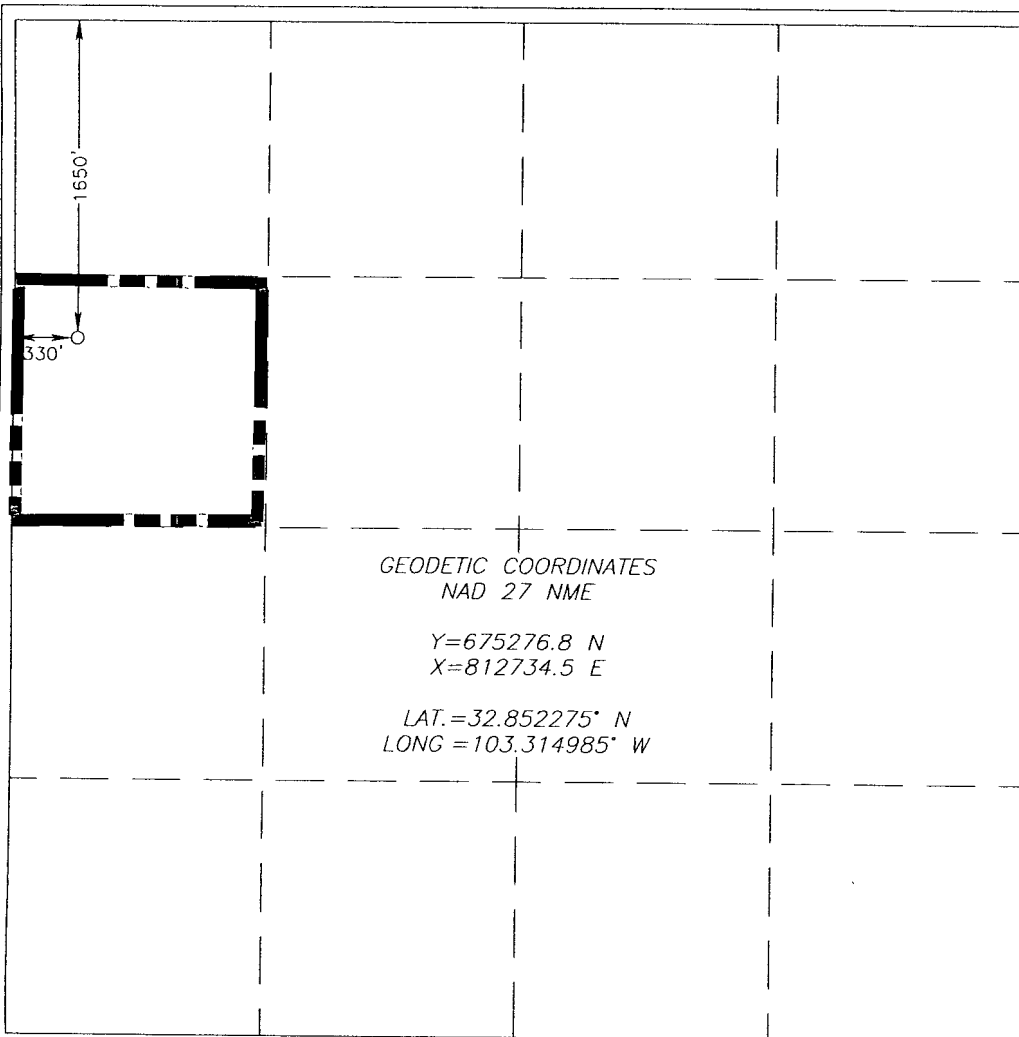
Surface Location

UL or lot No. E	Section 12	Township 17-S	Range 36-E	Lot Idn	Feet from the 1650	North/South line NORTH	Feet from the 330	East/West line WEST	County LEA
--------------------	---------------	------------------	---------------	---------	-----------------------	---------------------------	----------------------	------------------------	---------------

Bottom Hole Location If Different From Surface

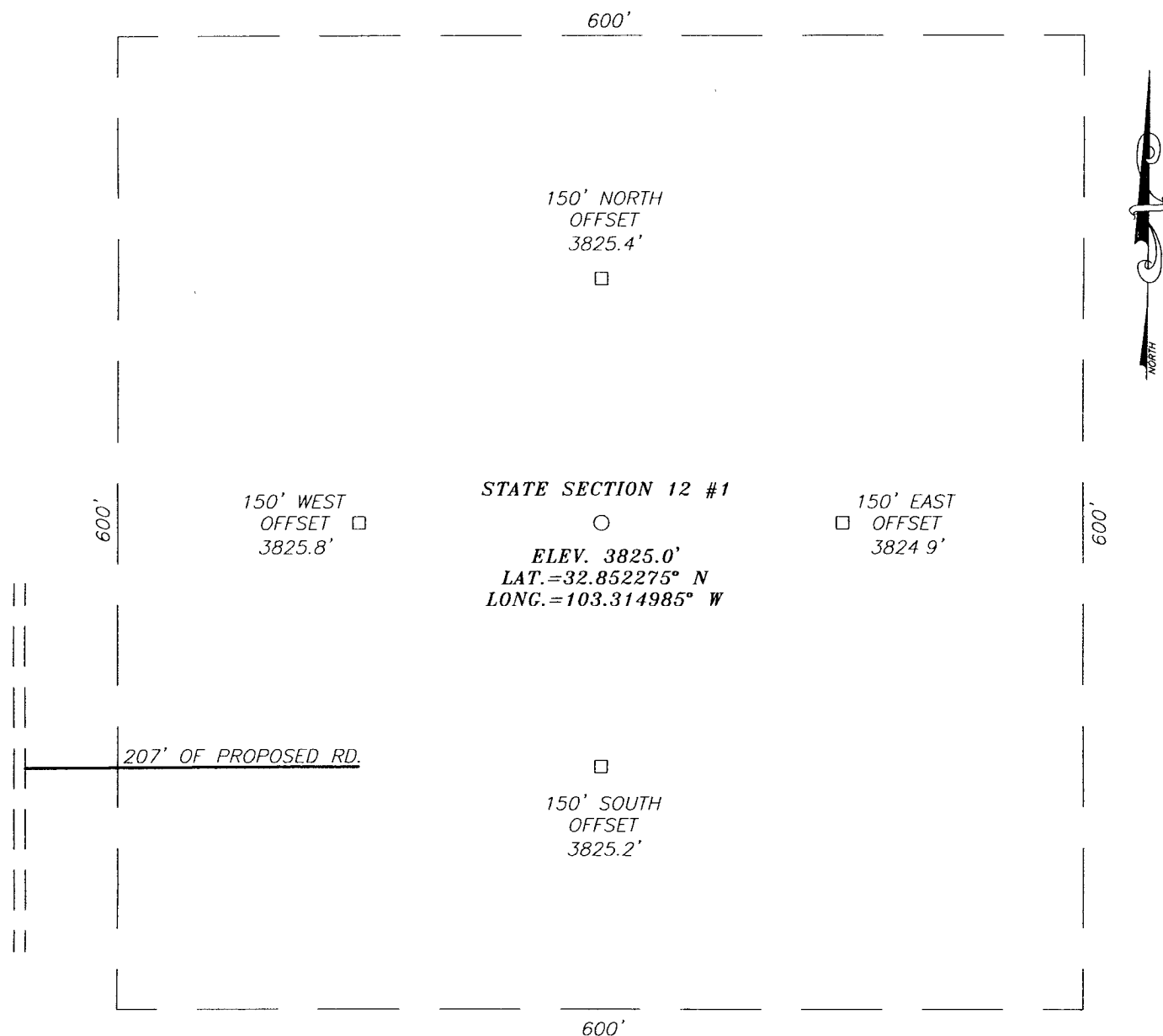
UL or lot No.	Section	Township	Range	Lot Idn	Feet from the	North/South line	Feet from the	East/West line	County
Dedicated Acres 40 ✓	Joint or Infill	Consolidation Code	Order No.						

NO ALLOWABLE WILL BE ASSIGNED TO THIS COMPLETION UNTIL ALL INTERESTS HAVE BEEN CONSOLIDATED
OR A NON-STANDARD UNIT HAS BEEN APPROVED BY THE DIVISION



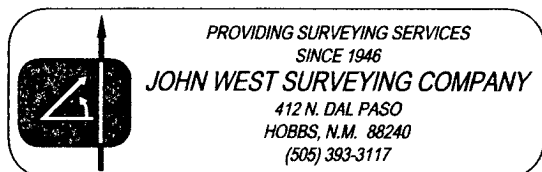
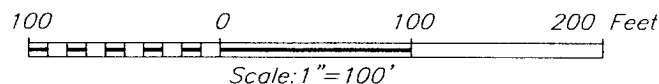
OPERATOR CERTIFICATION I hereby certify that the information herein is true and complete to the best of my knowledge and belief, and that this organization either owns a working interest or unleased mineral interest in the land including the proposed bottom hole location or has a right to drill this well at this location pursuant to a contract with an owner of such mineral or working interest, or to a voluntary pooling agreement or a compulsory pooling order heretofore entered by the division. Signature _____ Date _____ Joe T. Janica 07/21/08 Printed Name	
SURVEYOR CERTIFICATION I hereby certify that the well location shown on this plat was plotted from field notes of actual surveys made by me or under my supervision, and that the same is true and correct to the best of my belief. Date Surveyed _____ Signature & Seal of Professional Surveyor _____ Certificate No. GARY EIDSON 12641 RONALD J. EIDSON 3239	

SECTION 12, TOWNSHIP 17 SOUTH, RANGE 36 EAST, N.M.P.M.,
LEA COUNTY, NEW MEXICO



DIRECTIONS TO LOCATION

FROM THE INTERSECTION OF ST. HWY. #18 AND CO RD. L78 (WEST STILES ROAD), GO WEST ON STILES ROAD APPROX. 2.4 MILES. TURN LEFT ON CALICHE ROAD AND GO SOUTH APPROX. 0.3 MILES. THIS LOCATION IS EAST APPROX 400 FEET.

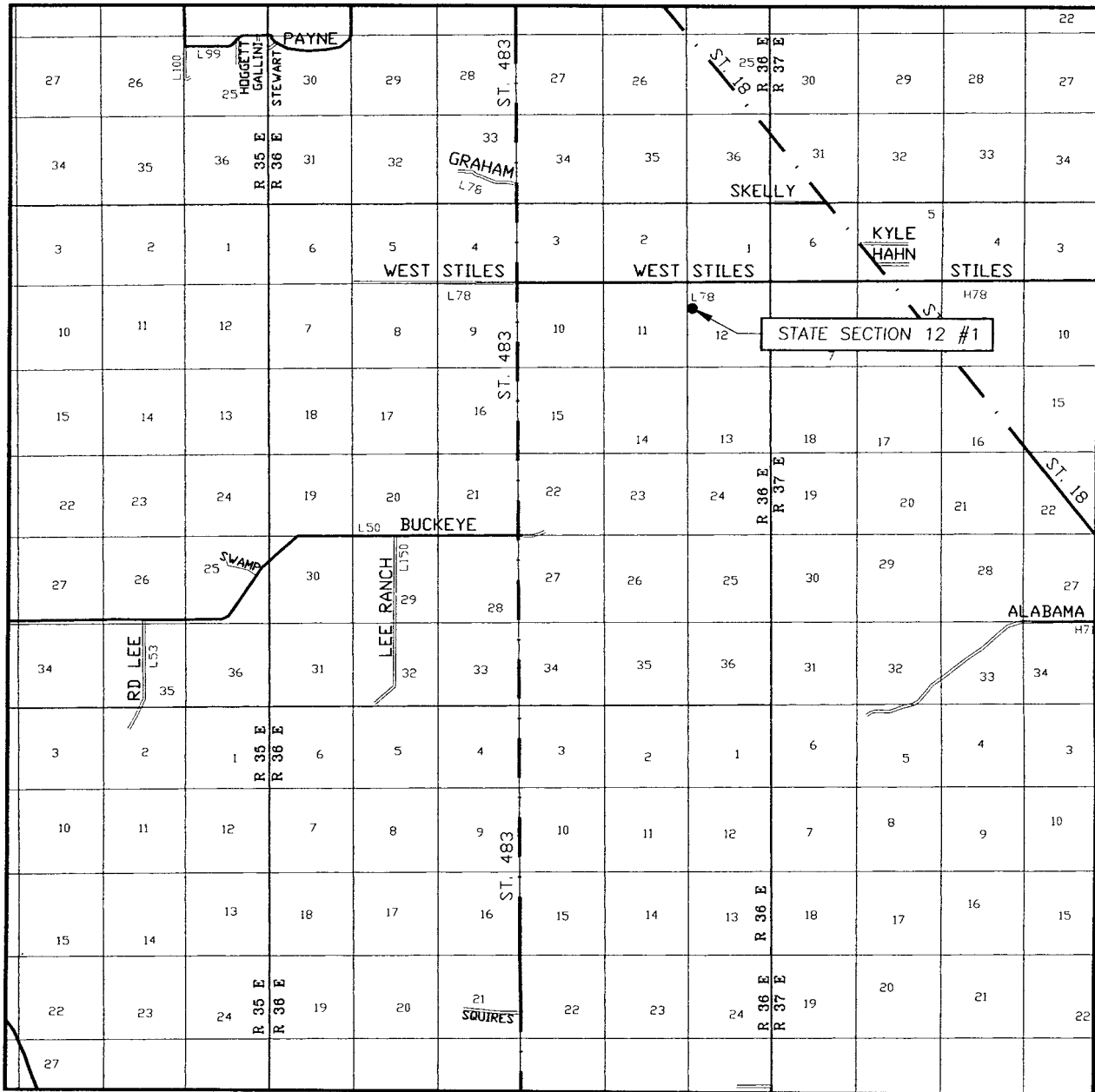


VANGUARD PERMIAN, LLC

STATE SECTION 12 #1 WELL
LOCATED 1650 FEET FROM THE NORTH LINE
AND 330 FEET FROM THE WEST LINE OF SECTION 12,
TOWNSHIP 17 SOUTH, RANGE 36 EAST, N.M.P.M.,
LEA COUNTY, NEW MEXICO

Survey Date: 6/26/08	Sheet 1 of 1 Sheets
W.O. Number. 08.11.1051	Dr By: AR
Date: 7/02/08	08111051
	Scale: 1"=100'

VICINITY MAP



SCALE: 1" = 2 MILES

SEC. 12 TWP. 17-S RGE. 36-E

SURVEY N.M.P.M.

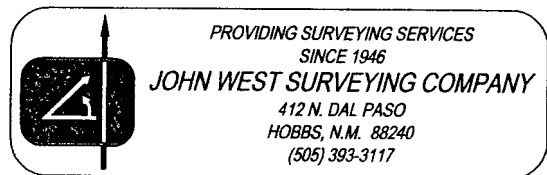
COUNTY LEA STATE NEW MEXICO

DESCRIPTION 1650' FNL & 330' FWL

ELEVATION 3825'

OPERATOR VANGUARD PERMIAN, LLC

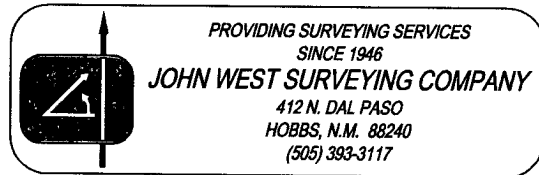
LEASE STATE SECTION 12



This topographic map depicts a section of the Colorado River, showing proposed road construction. The map includes contour lines, spot elevations, and labels for 'Tanks', 'Gravel', and 'WEST STILES ROAD'. A specific area is highlighted with a box and labeled 'STATE SECTION 12 #1' and '207' OF PROPOSED ROAD'. The map also shows 'R31E R32E' and 'R33E' grid lines.

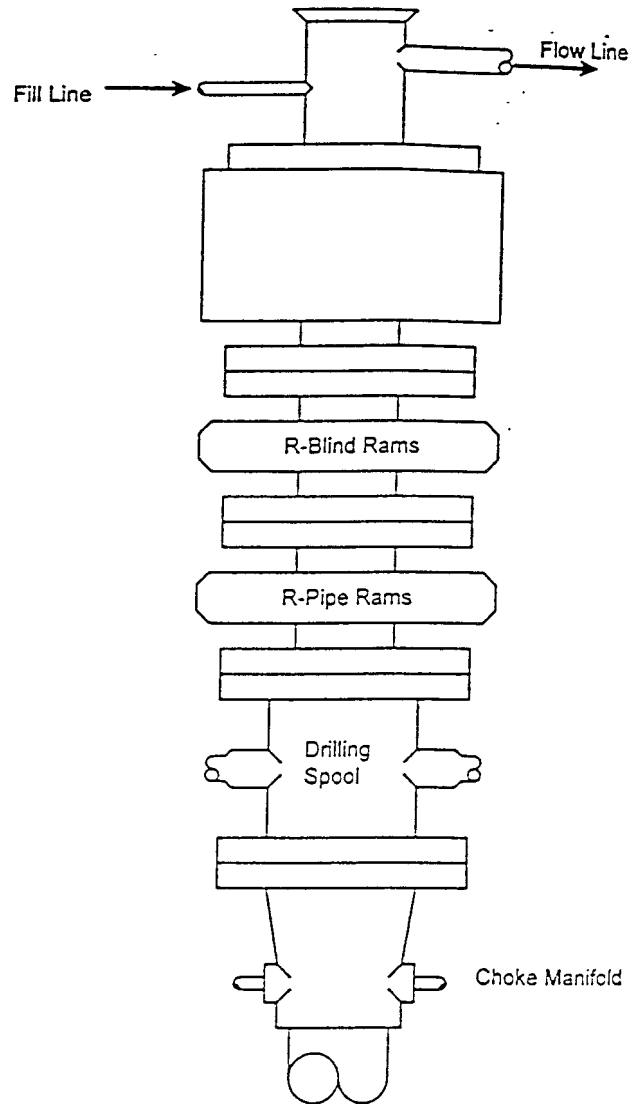
CONTOUR INTERVAL:
LOVINGTON SE, N.M. - 5'

U.S.G.S. TOPOGRAPHIC MAP
LOVINGTON SE, N.M.



BLOWOUT PREVENTER SYSTEM

3000 PSI



Type 900 SERIES
3000 PSI WP

Choke Manifold Assembly for 5M WP System

