

DISTRICT I
1625 N. French Dr., Hobbs, NM 88240

DISTRICT II
1301 W. Grand Avenue, Artesia, NM 88210

DISTRICT III
1000 Rio Brazos Rd., Aztec, NM 87410

DISTRICT IV
1220 S. St. Francis Dr., Santa Fe, NM 87505

State of New Mexico
Energy, Minerals, and Natural Resources Department
OIL CONSERVATION DIVISION
1220 South St. Francis Dr.
Santa Fe, New Mexico 87505

Form C-102
Revised October 12, 2005
Submit to Appropriate District Office
State Lease - 4 copies
Fee Lease - 3 copies

☐ AMENDED REPORT

WELL LOCATION AND ACREAGE DEDICATION PLAT

¹ API Number 30-009-20021	² Pool Code	³ Pool Name WILDCAT ABO
⁴ Property Code 37278	⁵ Property Name MORGAN CREEK NITZ	⁶ Well Number 1
⁷ OGRID No.	⁸ Operator Name OPS GROUP LP	⁹ Elevation 4374'

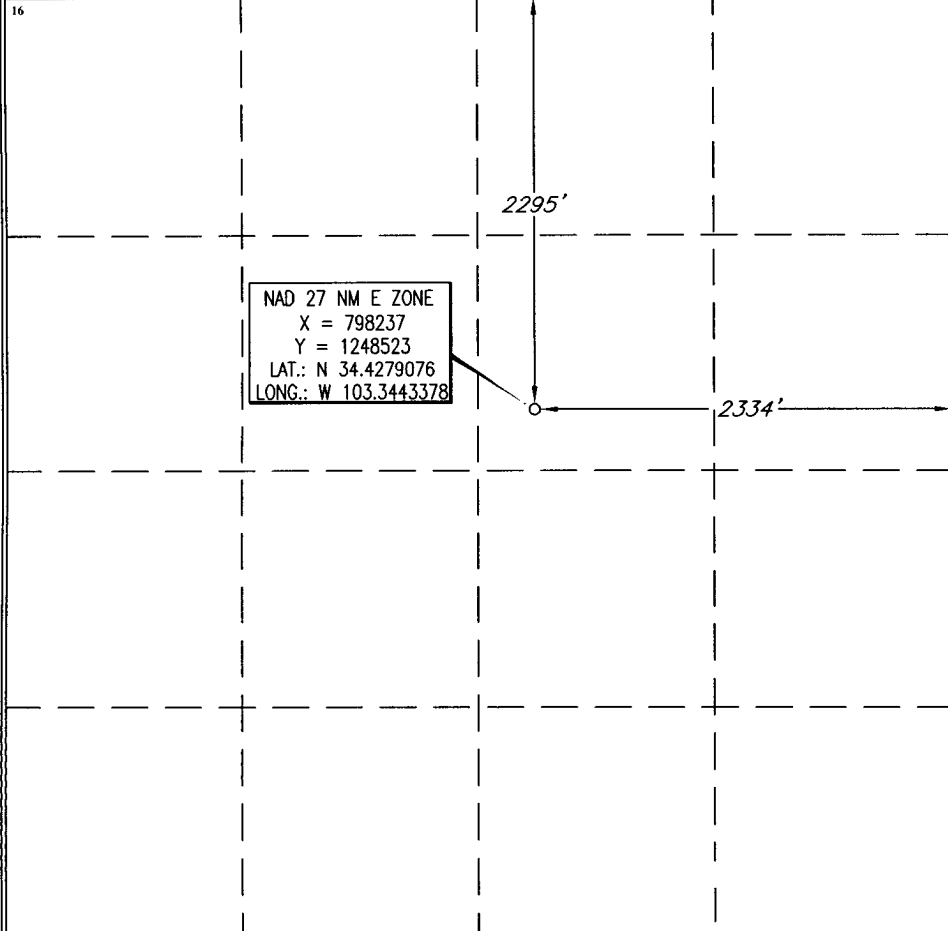
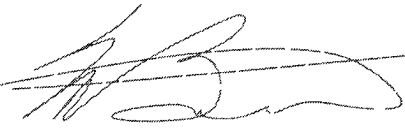
¹⁰ Surface Location

UL or lot no.	Section	Township	Range	Lot Idn	Feet from the	North/South line	Feet from the	East/West line	County
G	2	2 NORTH	34 EAST, N.M.P.M.		2295'	NORTH	2334'	EAST	CURRY

¹¹ Bottom Hole Location If Different From Surface

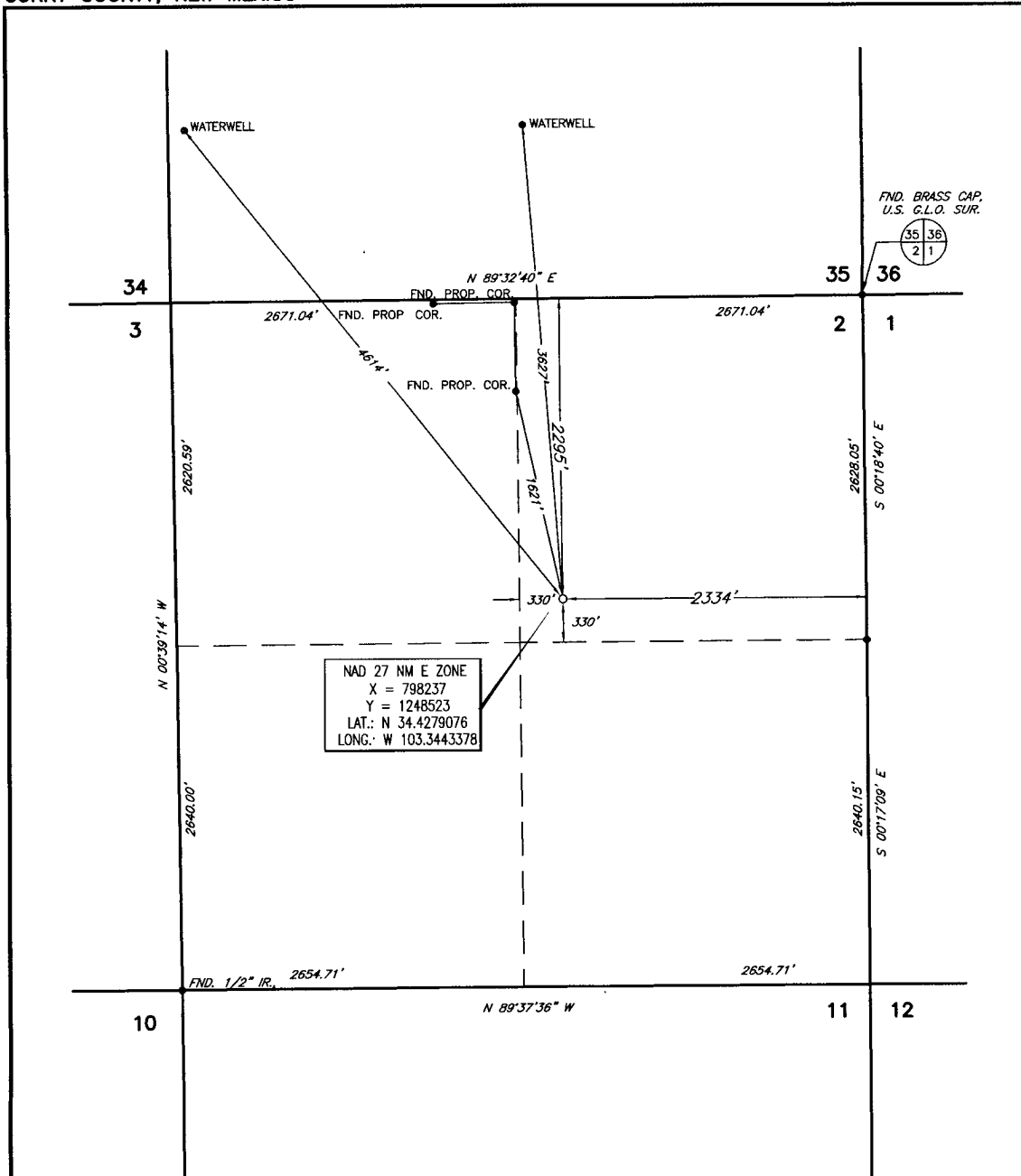
UL or lot no.	Section	Township	Range	Lot Idn	Feet from the	North/South line	Feet from the	East/West line	County
¹²	¹³		¹⁴ Consolidation Code	¹⁵ Order No.					

NO ALLOWABLE WELL BE ASSIGNED TO THIS COMPLETION UNTIL ALL INTERESTS HAVE BEEN CONSOLIDATED OR A NON-STANDARD UNIT HAS BEEN APPROVED BY THE DIVISION

<div>¹⁶</div> <div></div>	<div>OPERATOR CERTIFICATION <i>I hereby certify that the information contained herein is true and complete to the best of my knowledge and belief, and that this organization either owns a working interest or unleased mineral interest in the land including the proposed bottom hole location or has a right to drill this well at this location pursuant to a contract with an owner of such a mineral or working interest, or to a voluntary pooling agreement or a compulsory pooling order heretofore entered by the division.</i></div> <div>Signature _____ Date _____</div> <div>Printed Name _____</div> <div>SURVEYOR CERTIFICATION <i>I hereby certify that the well location shown on this plat was plotted from field notes of actual surveys made by me or under my supervision, and that the same is true and correct to the best of my belief.</i></div> <div>Date of Survey _____</div> <div>Signature and Seal of Professional Surveyor </div> <div>Michael Blake Brown R.P.S. #18329 JOB # 137437 / PORTAIR / J.A.F.</div>
--	---

30-009-20021

PLAT SHOWING PROPOSED WELL LOCATION IN
SECTION 2, T-2-N, R-34-E, N.M.P.M.
CURRY COUNTY, NEW MEXICO



MICHEAL BLAKE BROWN, P.S. NO. 18329

NO.	REVISION	DATE	BY
SURVEYED BY:	A.V., S.C.		
DRAWN BY:	J.A.F.		
APPROVED BY:	M.B.B.		

OPS GROUP LP

SURVEYING AND MAPPING BY
TOPOGRAPHIC LAND SURVEYORS
MIDLAND, TEXAS

SCALE:	1" = 1000'
DATE:	JUNE 26, 2008
JOB NO.:	137437-2
QUAD NO.:	PORTAIR
SHEET :	1 OF 1