

District I
PO Box 1980, Hobbs, NM 88241-1980

District II
811 South First, Artesia, NM 88210

District III
1000 Rio Brazos Rd., Aztec, NM 87410

District IV
2040 South Pacheco, Santa Fe, NM 87505

State of New Mexico
Energy, Minerals & Natural Resources Department

OIL CONSERVATION DIVISION
2040 South Pacheco
Santa Fe, NM 87505

Form C-101

Revised October 18, 1994

Instructions on back

Submit to Appropriate District Office

State Lease - 6 Copies

Fee Lease - 5 Copies

☐ AMENDED REPORT

APPLICATION FOR PERMIT TO DRILL, RE-ENTER, DEEPEN, PLUGBACK, OR ADD A ZONE

1 Operator Name and Address Mewbourne Oil Company PO Box 5270 Hobbs, N.M. 88241		2 OGRID Number 14744
		3 API Number 30-025-36165
4 Property Code 31995	5 Property Name Rocky 16 State	6 Well No. 1

7 Surface Location

UL or lot no.	Section	Township	Range	Lot Idn	Feet from the	North/South line	Feet from the	East/West Line	County
M	16	16S	35E		660	South	990	West	Lea

8 Proposed Bottom Hole Location If Different From Surface

UL or lot no.	Section	Township	Range	Lot Idn	Feet from the	North/South line	Feet from the	East/West Line	County
9 Proposed Pool 1 Townsend Morrow					10 Proposed Pool 2				

11 Work Type Code N	12 Well Type Code G	13 Cable/Rotary R	14 Lease Type Code S	15 Ground Level Elevation 4017
16 Multiple	17 Proposed Depth 12900	18 Formation Morrow	19 Contractor TBA	20 Spud Date 02-28-03

21 Proposed Casing and Cement Program

Hole Size	Casing Size	Casing weight/foot	Setting Depth	Sacks of Cement	Estimated TOC
17 1/2"	13 3/8"	48	425	400	Surface
12 1/4"	8 5/8"	32	4500	1300+200	Surface
7 7/8"	5 1/2"	17	12900	500	Top of WC

22 Describe the proposed program. If this application is to DEEPEN or PLUG BACK give the data on the present productive zone and proposed new productive zone. Describe the blowout prevention program, if any. Use additional sheets if necessary.

BOP Program: 2K Hydril (Exhibit #2) from surface casing to intermediate TD.
Schaffer LWS or equivalent (Double-Ram-Hydraulic) 900 series with Hydril 900 series (Exhibit #2A)
from intermediate casing to TD. Rotating Head, PVT, Flow Monitor & Gas Separator will be installed
before Wolfcamp.

Mud Program: 0-425'.. Fresh Water & Spud Mud.
425-4500'..FW mud. Then go to add brine before the salt. Sweeps as needed.
4500-12900'..9.3-9.7#/g Cut Brine. WL & Viscosity increase as needed.

23 I hereby certify that the information given above is true and complete to the best of my knowledge and belief.

Signature:

Printed name: N.M. Young

Title: District Manager

OIL CONSERVATION DIVISION

Approved By:

Title: PETROLEUM ENGINEER

Approval Date:

Expiration Date:

Permit Expires 1 Year From Approval
Date Unless Drilling Underway

DISTRICT I
1626 N. French Dr., Hobbs, NM 88240
DISTRICT II
811 South First, Artesia, NM 88210
DISTRICT III
1000 Rio Brazos Rd., Aztec, NM 87410
DISTRICT IV
2040 South Pacheco, Santa Fe, NM 87505

State of New Mexico
Energy, Minerals and Natural Resources Department

Form C-102
Revised March 17, 1999
Instruction on back
Submit to Appropriate District Office
State Lease - 4 Copies
Fee Lease - 3 Copies

OIL CONSERVATION DIVISION
P.O. Box 2088
Santa Fe, New Mexico 87504-2088

☐ AMENDED REPORT

WELL LOCATION AND ACREAGE DEDICATION PLAT

API Number 30-025-36165	Pool Code 86400	Pool Name Townsend Morrow
Property Code 31995	Property Name ROCKY "16" State	Well Number 1
OGRID No. 14744	Operator Name MEWBOURNE OIL COMPANY	Elevation 4017

Surface Location

UL or lot No.	Section	Township	Range	Lot Idn	Feet from the	North/South line	Feet from the	East/West line	County
M	16	16S	35E		660	SOUTH	990	WEST	LEA

Bottom Hole Location If Different From Surface

UL or lot No.	Section	Township	Range	Lot Idn	Feet from the	North/South line	Feet from the	East/West line	County
Dedicated Acres 320	Joint or Infill	Consolidation Code	Order No.						

NO ALLOWABLE WILL BE ASSIGNED TO THIS COMPLETION UNTIL ALL INTERESTS HAVE BEEN CONSOLIDATED
OR A NON-STANDARD UNIT HAS BEEN APPROVED BY THE DIVISION

<p>Humble State A #1</p> <p>A-1320</p> <p>N.32°55'00.4" W.103°28'05.4"</p> <p>990'</p> <p>880'</p> <p>FEB 2003 Hobbs OCD</p>	<p>OPERATOR CERTIFICATION</p> <p>I hereby certify the the information contained herein is true and complete to the best of my knowledge and belief.</p> <p>Signature <i>N.M. Young</i></p> <p>N.M. Young</p> <p>Printed Name Dst. Manager</p> <p>Title</p> <p>02/19/03</p> <p>Date</p> <p>SURVEYOR CERTIFICATION</p> <p>I hereby certify that the well location shown on this plat was plotted from field notes of actual surveys made by me or under my supervision, and that the same is true and correct to the best of my belief.</p> <p>2/12/2003</p> <p>Date Surveyed</p> <p>Signature & Seal of Professional Surveyor <i>Herbert L. Jones</i></p> <p>NEW MEXICO REGISTERED PROFESSIONAL SURVEYOR 3640</p> <p>Certificate No. Herbert L. Jones RLS 3640</p> <p>PROCKY 16-NOV-03 GENERAL SURVEYING COMPANY</p>
--	---

0 330' 660' 990' 1650' 1980' 2310' 2310' 1980' 1650' 990' 660' 330' 0'

Mewbourne Oil Company
BOP Schematic for
12 1/4" Hole

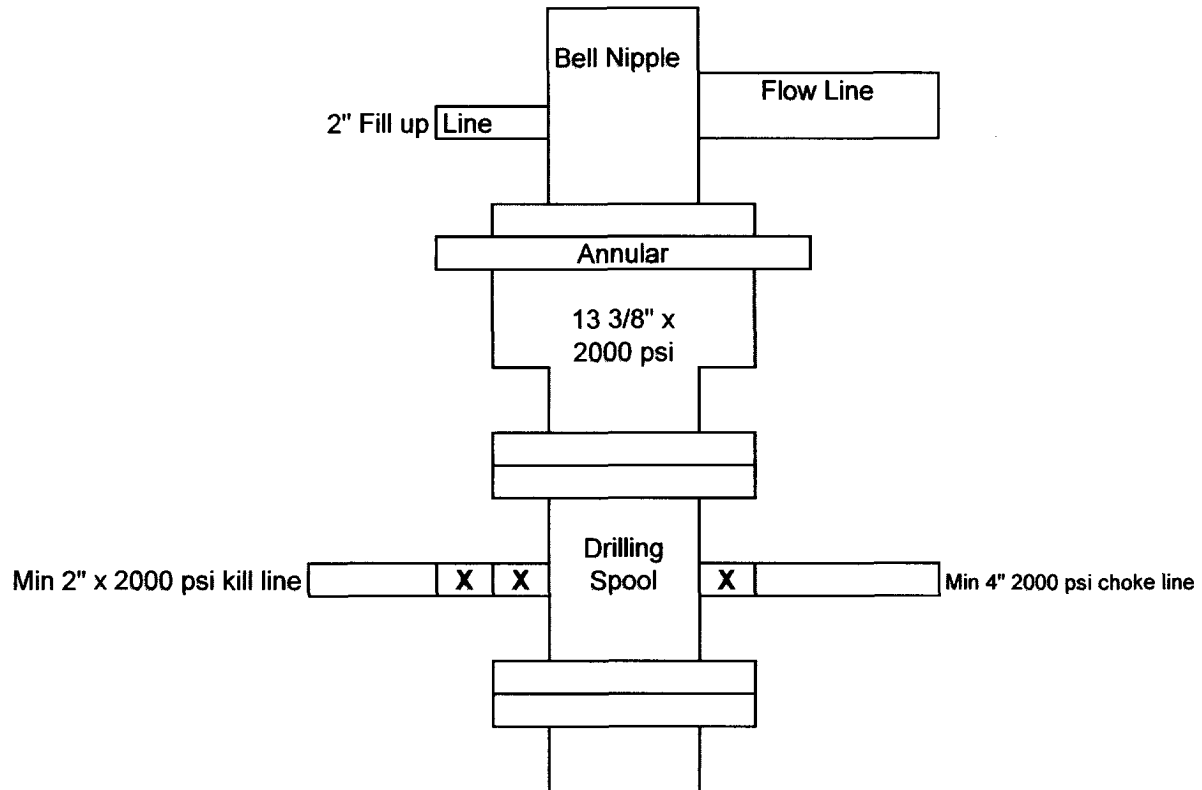
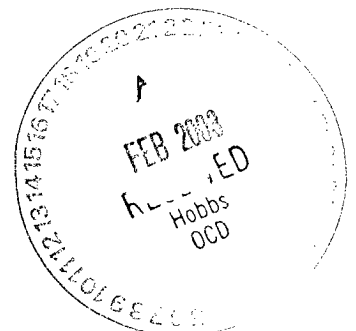


Exhibit #2

Rocky 16 State #1
660' FSL & 990' FWL
Sec. 16 T-16S R-35E
Lea, Co. N.M.



Mewbourne Oil Company

BOP Scematic for
8 3/4" or 7 7/8" Hole

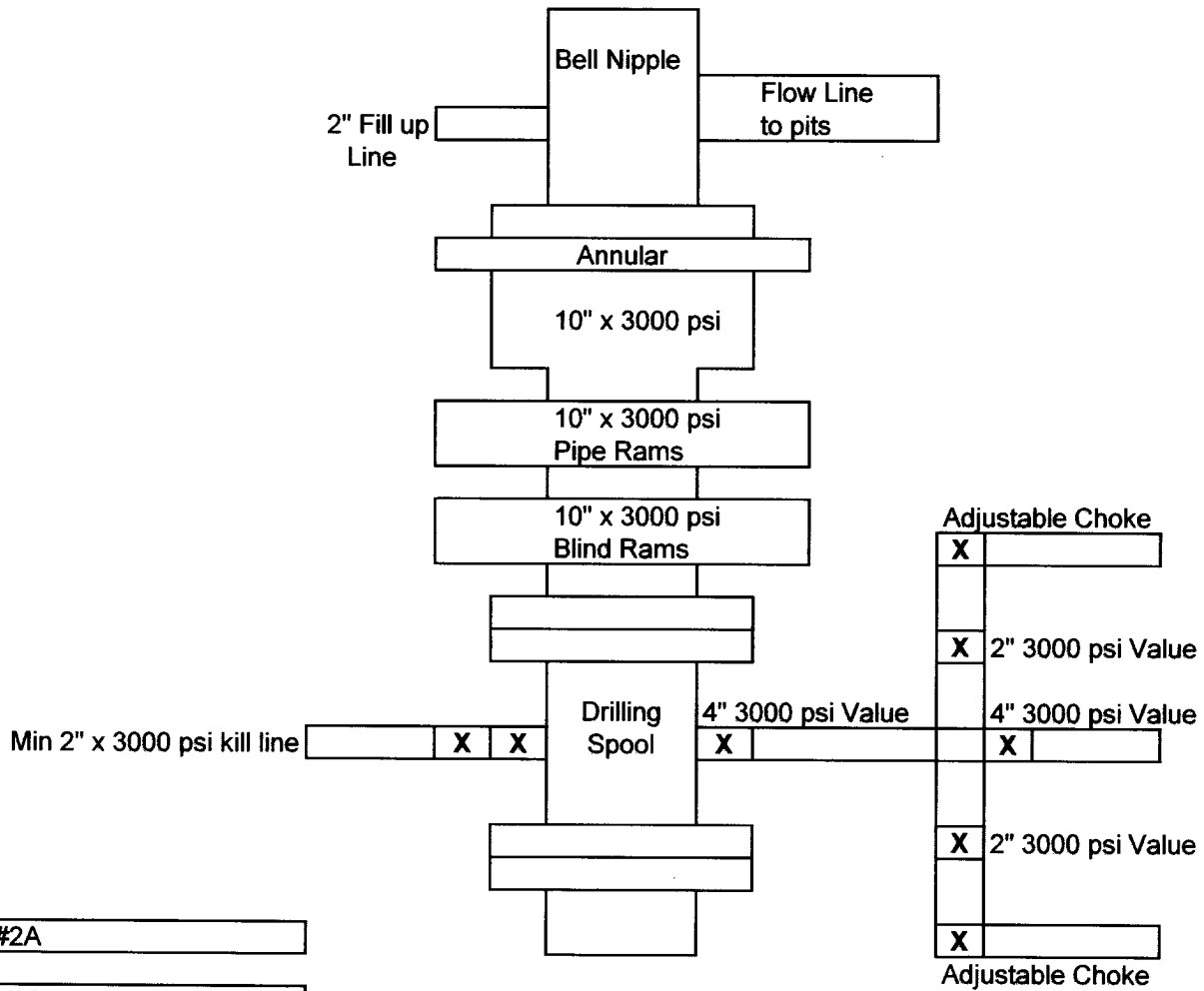
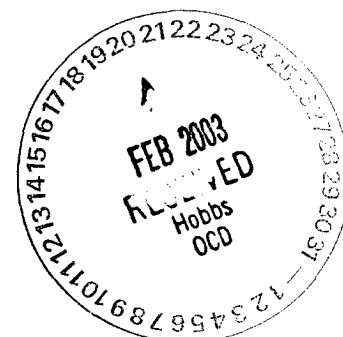
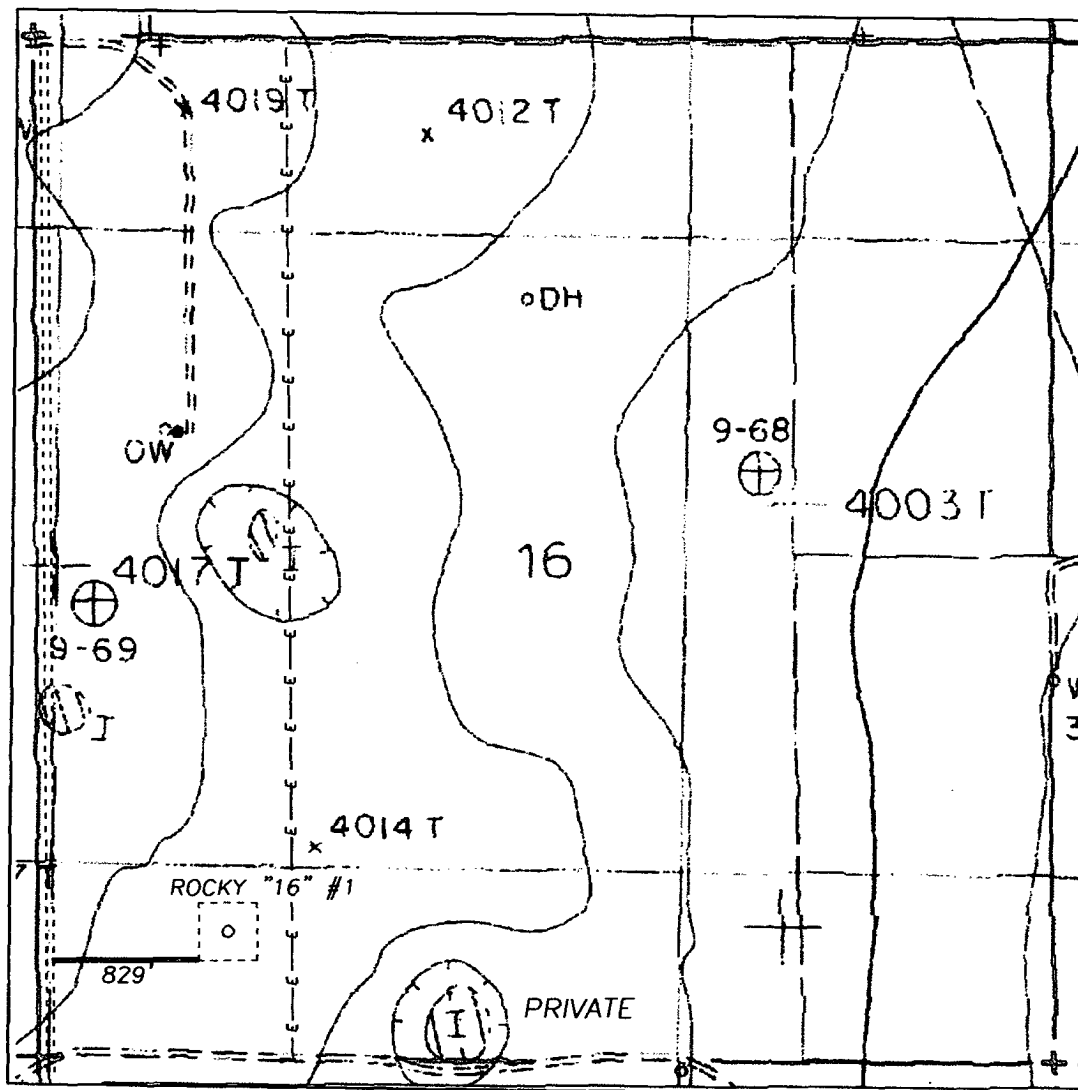


Exhibit #2A

Rocky 16 State #1
660' FSL & 990' FWL
Sec. 16 T-16S R-35E
Lea, County New Mexico

SECTION 16, TOWNSHIP 16 SOUTH, RANGE 35 EAST, NMPM, LEA COUNTY, NEW MEXICO.



1000' 0 1000' 2000'
Scale 1" = 1000'

THE PREPARATION OF THIS PLAT AND THE PERFORMANCE OF THE SURVEY UPON WHICH IT IS BASED WERE DONE UNDER MY DIRECTION AND THE PLAT ACCURATELY DEPICTS THE RESULTS OF SAID SURVEY AND MEET THE REQUIREMENTS OF THE STANDARDS FOR LAND SURVEYS IN NEW MEXICO AS ADOPTED BY THE NEW MEXICO STATE BOARD OF REGISTRATION FOR PROFESSIONAL ENGINEERS AND LAND SURVEYORS.

HERSCHEL L. JONES
REGISTERED PROFESSIONAL LAND SURVEYOR
No. 3640

GENERAL SURVEYING COMPANY P.O. BOX 1928
LOVINGTON, NEW MEXICO 88260

MEWBOURNE OIL COMPANY

LEASE ROAD TO ACCESS THE MEWBOURNE ROCKY "16" #1
WELL, LOCATED IN SECTION 16, TOWNSHIP 16 SOUTH,
RANGE 35 EAST, NMPM, LEA COUNTY, NEW MEXICO.

Survey Date: 2/12/2003	Sheet 1 of 1 Sheets
Drawn By: Ed Blevins	W.O. Number
Date: 2/12/03	Scale 1" = 1000' ROCKY 16-1