

District I
O Box 1980, Hobbs, NM 88241-1980
District II
O Drawer DD, Artesia, NM 88211-0719
District III
000 Rio Brazos Rd., Aztec, NM 87410
District IV
O Box 2088, Santa Fe, NM 87504-2088

State of New Mexico
Energy, Minerals & Natural Resources Department

OIL CONSERVATION DIVISION
PO Box 2088
Santa Fe, NM 87504-2088

Form C-102
Revised February 21, 1994
Instructions on back
Submit to Appropriate District Office
State Lease - 4 Copies
Fee Lease - 3 Copies

☒ AMENDED REPORT

WELL LOCATION AND ACREAGE DEDICATION PLAT

*API Number 30-025-36130		*Pool Code ✓ 7900		*Pool Name Undesignated Brunson Drinkard - Also, South Wildcat Ellenburger	
*Property Code 31895		*Property Name BRABANT			*Well Number 1
*OGRID No. 192463		*Operator Name OXY USA WTP LP			*Elevation 3389

¹⁰ Surface Location

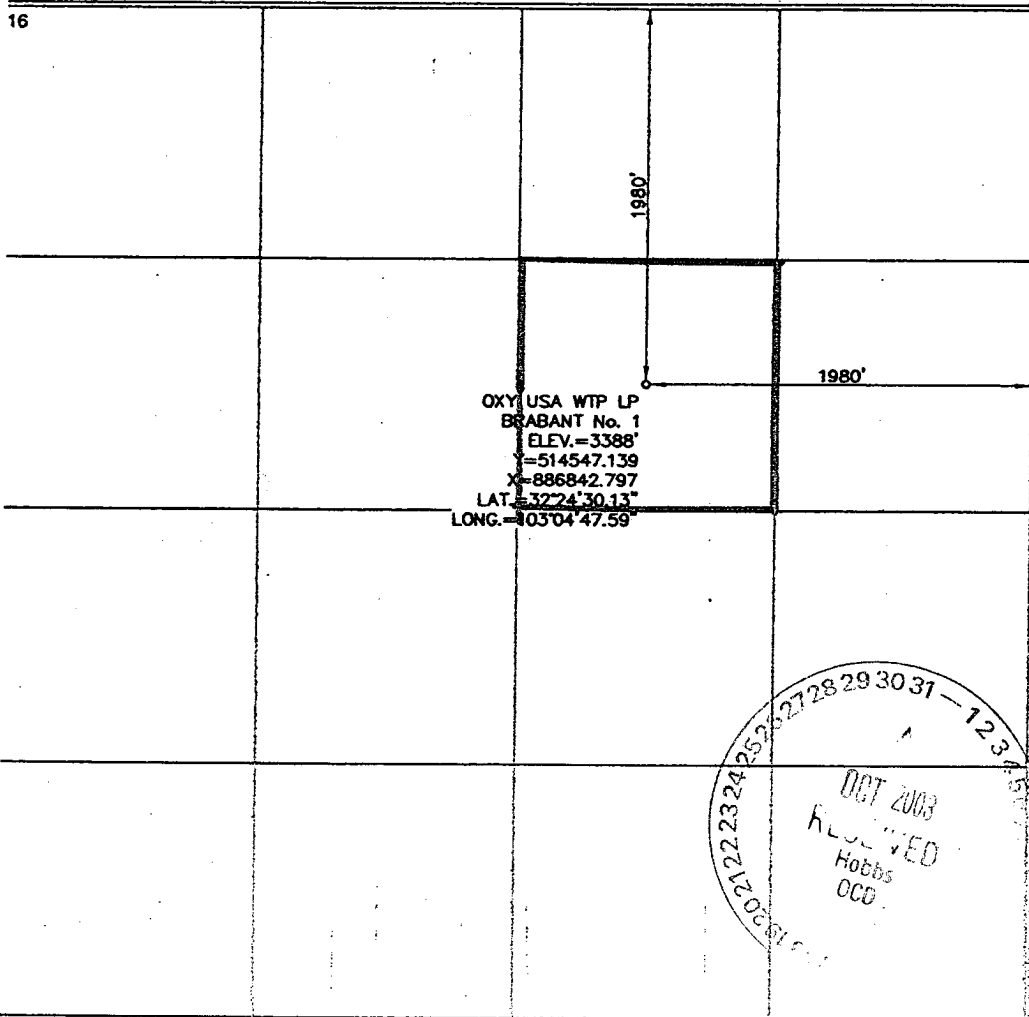
UL or lot no.	Section	Township	Range	Lot Idn	Feet from the	North/South line	Feet from the	East/West line	County
G	8	22-S	38-E		1980	NORTH	1980	EAST	LEA

¹¹ Bottom Hole Location If Different From Surface

UL or lot no.	Section	Township	Range	Lot Idn	Feet from the	North/South line	Feet from the	East/West line	County

*Dedicated Acres 40	*Joint or Infill No	*Consolidation Code	*Order No.
------------------------	------------------------	---------------------	------------

NO ALLOWABLE WILL BE ASSIGNED TO THIS COMPLETION UNTIL ALL INTERESTS HAVE BEEN CONSOLIDATED
OR A NON-STANDARD UNIT HAS BEEN APPROVED BY THE DIVISION



¹⁷ OPERATOR CERTIFICATION

I hereby certify that the information contained herein is true and complete to the best of my knowledge and belief.

David Stewart

Signature
David Stewart
Printed Name
Sr. Regulatory Analyst
Title
1/23/03 10/29/03
Date

¹⁸ SURVEYOR CERTIFICATION

I hereby certify that the well location shown on this plat was plotted from field notes of actual surveys made by me or under my supervision, and that the same is true and correct to best of my belief.

DECEMBER 4, 2002

Date of Survey

Signature and Seal of Professional Surveyor
James E. Tompkins

Certificate Number
14729

