

New Mexico Oil Conservation Division District I  
UNITED STATES DEPARTMENT OF THE INTERIOR  
BUREAU OF LAND MANAGEMENT  
1625 N. Foothill Blvd., Suite 100  
Albuquerque, NM 88240FORM APPROVED  
OMB NO. 1004-0136  
Expires: February 28, 1995

## APPLICATION FOR PERMIT TO DRILL OR DEEPEN

## 1a. TYPE OF WORK

DRILL ☒DEEPEN ☐

## b. TYPE OF WELL

OIL

WELL ☒

GAS

WELL ☐OTHER ☐

SINGLE

ZONE ☐

MULTIPLE

ZONE ☐

## 2. NAME OF OPERATOR

POGO PRODUCING COMPANY

(RICHARD WRIGHT 915-685-8140)

## 3. ADDRESS AND TELEPHONE NO.

P.O. BOX 10340 MIDLAND, TEXAS 79702-7340 (915-695-8100)

## 4. LOCATION OF WELL (Report location clearly and in accordance with any State requirements.)

330' FSL & 660' FEL SEC. 28 T22S-R32E LEA CO. NM  
At proposed prod. zone SAME

## 14. DISTANCE IN MILES AND DIRECTION FROM NEAREST TOWN OR POST OFFICE\*

Approximately 25 miles East of Carlsbad New Mexico

## 15. DISTANCE FROM PROPOSED\*

LOCATION TO NEAREST  
PROPERTY OR LEASE LINE, FT.  
(Also to nearest drilg. unit lide, if any)

330'

18. DISTANCE FROM PROPOSED LOCATION\*  
TO NEAREST WELL, DRILLING, COMPLETED,  
OR APPLIED FOR, ON THIS LEASE, FT.

1650'

## 16. NO. OF ACRES IN LEASE

320

17. NO. OF ACRES ASSIGNED  
TO THIS WELL

40

## 19. PROPOSED DEPTH

8900'

## 20. ROTARY OR CABLE TOOLS

ROTARY

## 21. ELEVATIONS (Show whether DF, RT, GR, etc.)

3598' GR.

Carlsbad Controlled Water Basin

22. APPROX. DATE WORK WILL START\*  
WHEN APPROVED

23.

## PROPOSED CASING AND CEMENTING PROGRAM

SIZE OF HOLE	GRADE SIZE OF CASING	WEIGHT PER FOOT	SETTING DEPTH	QUANTITY OF CEMENT
25"	Conductor	NA	40'	Cement to surface with Redi-mix.
17 1/2"	J-55 13 3/8"	54.5	1000'	1000 Sx. circulate to surface
11"	J-55, S-80 8 5/8"	32	4700'	1800 Sx. " " "
7 7/8"	J-55 5 1/2"	17 & 15.5	8900'	1200 Sx. estimate top of cement 3000

1. Drill 25" hole to 40'. Set 40' of 20" conductor pipe and cement to surface with Redi-mix.
2. Drill 17 1/2" hole to 1000'. Run and set 1000' of 13 3/8" 54.5# S-80 & J-55 ST&C casing. Cement with 1000 Sx. of Class "C" cement + 2% CaCl<sub>2</sub> + 1/2# Flocele/Sx. circulate cement to surface.
3. Drill 11" hole to 4700'. Run and set 4700' of 8 5/8" casing as follows: 500' of 8 5/8" 32# S-80 ST&C, 4200' of 8 5/8" 32# J-55 ST&C. Cement with 1800 Sx. of Class "C" cement + 2% CaCl<sub>2</sub>, 1/2# Flocele/Sx. , circulate cement to surface.
4. Drill 7 7/8" hole to 8900'. Run and set 8900' of 5 1/2" casing as follows: 2900' of 5 1/2" 17# J-55 LT&C, 5000' of 5 1/2" 15.5# J-55 LT&C, 1000' of 5 1/2" 17# J-55 LT&C casing. Cement in two stages, DV tool at 6200'±. Cement 1st stage with 600 Sx. of Class "H" Premium Plus cement + additives, 2nd stage cement with 600 Sx. of Class "H" cement + additives, estimate top of cement 3000' from surface.

APPROVAL SUBJECT TO  
GENERAL REQUIREMENTS AND  
SPECIAL STIPULATIONS  
ATTACHED

IN ABOVE SPACE DESCRIBE PROPOSED PROGRAM: If proposal is to deepen, give data on present productive zone and proposed new productive zone. If proposal is to drill or deepen directionally, give pertinent data on subsurface locations and measured and true vertical depth of proposed wellbore, and proposed program, if any.

SIGNED

TITLE Agent

DATE 09/16/02

(This space for)

PERMIT NO.

Application approval

CONDITIONS OF APPR

OPER. OGRID NO. 17891

PROPERTY NO. 9342

POOL CODE 51683

EFF. DATE 12-2-02

API NO. 30-025-36061

APPROVAL DATE

APPROVED BY

/S/ JOE G. LARA

TITLE

FIELD MANAGER

DATE

NOV 25 2002

\*See Instructions On Reverse Side

APPROVAL FOR 1 YEAR

BUREAU OF LAND MANAGEMENT  
ROSWELL OFFICE

2002 SEP 17 AM 9:22

RECEIVED

121 JOE G. LARA

DISTRICT I  
P.O. Box 1980, Hobbs, NM 88241-1980

DISTRICT II  
P.O. Drawer DD, Artesia, NM 88211-0719

DISTRICT III  
1000 Rio Brazos Rd., Aztec, NM 87410

DISTRICT IV  
P.O. Box 2088, Santa Fe, N.M. 87504-2088

State of New Mexico  
Energy, Minerals and Natural Resources Department

OIL CONSERVATION DIVISION  
P.O. Box 2088  
Santa Fe, New Mexico 87504-2088

Form C-102  
Revised February 10, 1994  
Submit to Appropriate District Office  
State Lease - 4 Copies  
Fee Lease - 3 Copies

WELL LOCATION AND ACREAGE DEDICATION PLAT

☐ AMENDED REPORT

API Number <b>30-025-36061</b>	Pool Code <b>51683</b>	Pool Name <b>RED TANK - BONE SPRING</b>
Property Code <b>17271 9342</b>	Property Name <b>RED TANK "28" FEDERAL</b>	Well Number <b>2</b>
OGRID No. <b>17891</b>	Operator Name <b>POGO PRODUCING COMPANY</b>	Elevation <b>3598'</b>

Surface Location

UL or lot No.	Section	Township	Range	Lot Idn	Feet from the	North/South line	Feet from the	East/West line	County
P	28	22-S	32-E		330	SOUTH	660	EAST	LEA

Bottom Hole Location If Different From Surface

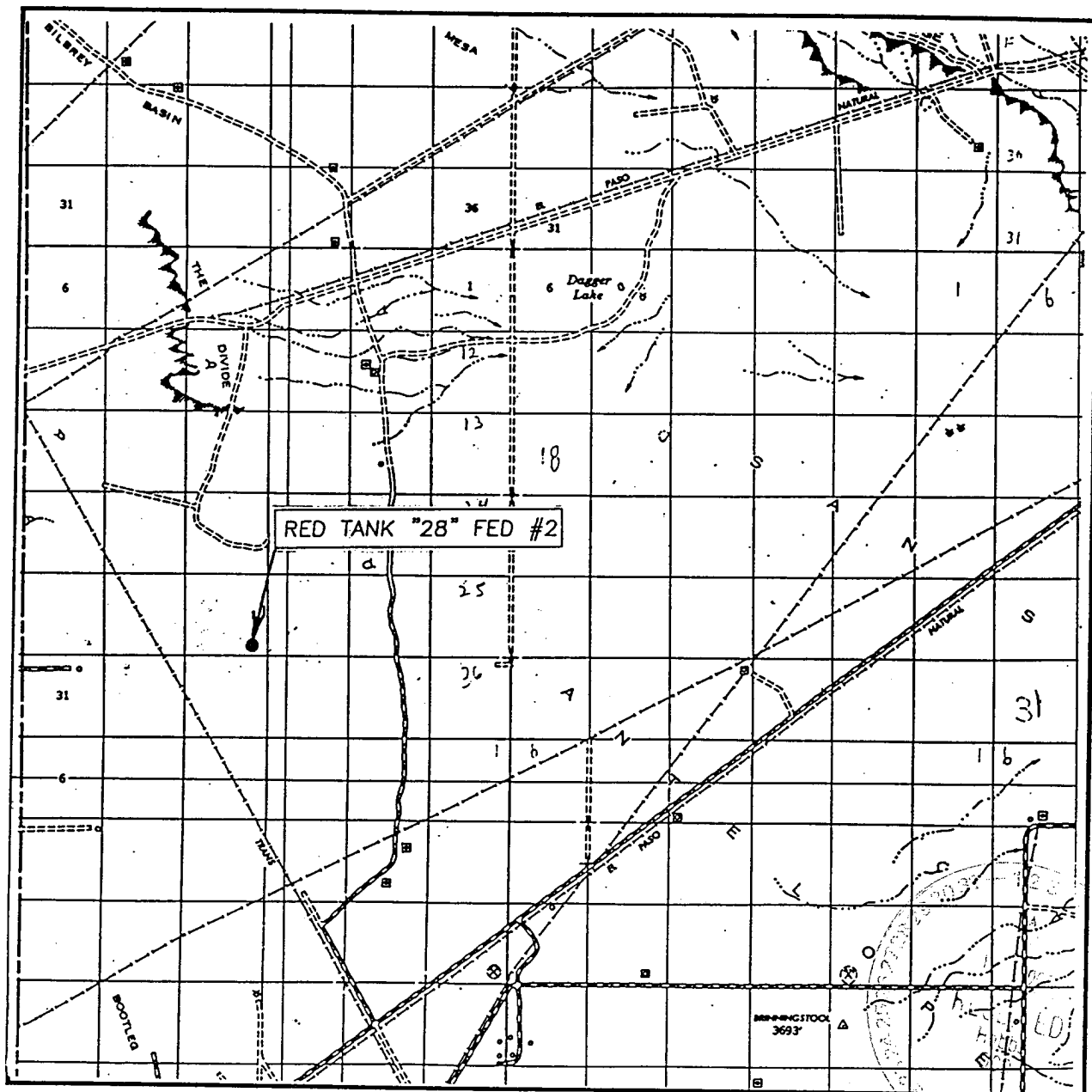
UL or lot No.	Section	Township	Range	Lot Idn	Feet from the	North/South line	Feet from the	East/West line	County
Dedicated Acres <b>40</b>	Joint or Infill	Consolidation Code	Order No.						

NO ALLOWABLE WILL BE ASSIGNED TO THIS COMPLETION UNTIL ALL INTERESTS HAVE BEEN CONSOLIDATED  
OR A NON-STANDARD UNIT HAS BEEN APPROVED BY THE DIVISION

	<b>OPERATOR CERTIFICATION</b> <i>I hereby certify the the information contained herein is true and complete to the best of my knowledge and belief.</i>  Signature Joe T. Janica Printed Name Agent Title 09/16/02 Date
	<b>SURVEYOR CERTIFICATION</b> <i>I hereby certify that the well location shown on this plat was plotted from field notes of actual surveys made by me or under my supervision, and that the same is true and correct to the best of my belief.</i> AUGUST 26, 2002 Date Surveyed Signature & Seal of Professional Surveyor  02.11.0622 Certificate No. RONALD J. EIDSON 3239 GARY EIDSON 12641

EXHBIT "A"

# VICINITY MAP



SCALE: 1" = 2 MILES

SEC. 28 TWP. 22-S RGE. 32-E

SURVEY N.M.P.M.

COUNTY LEA

DESCRIPTION 330' FSL & 660' FEL

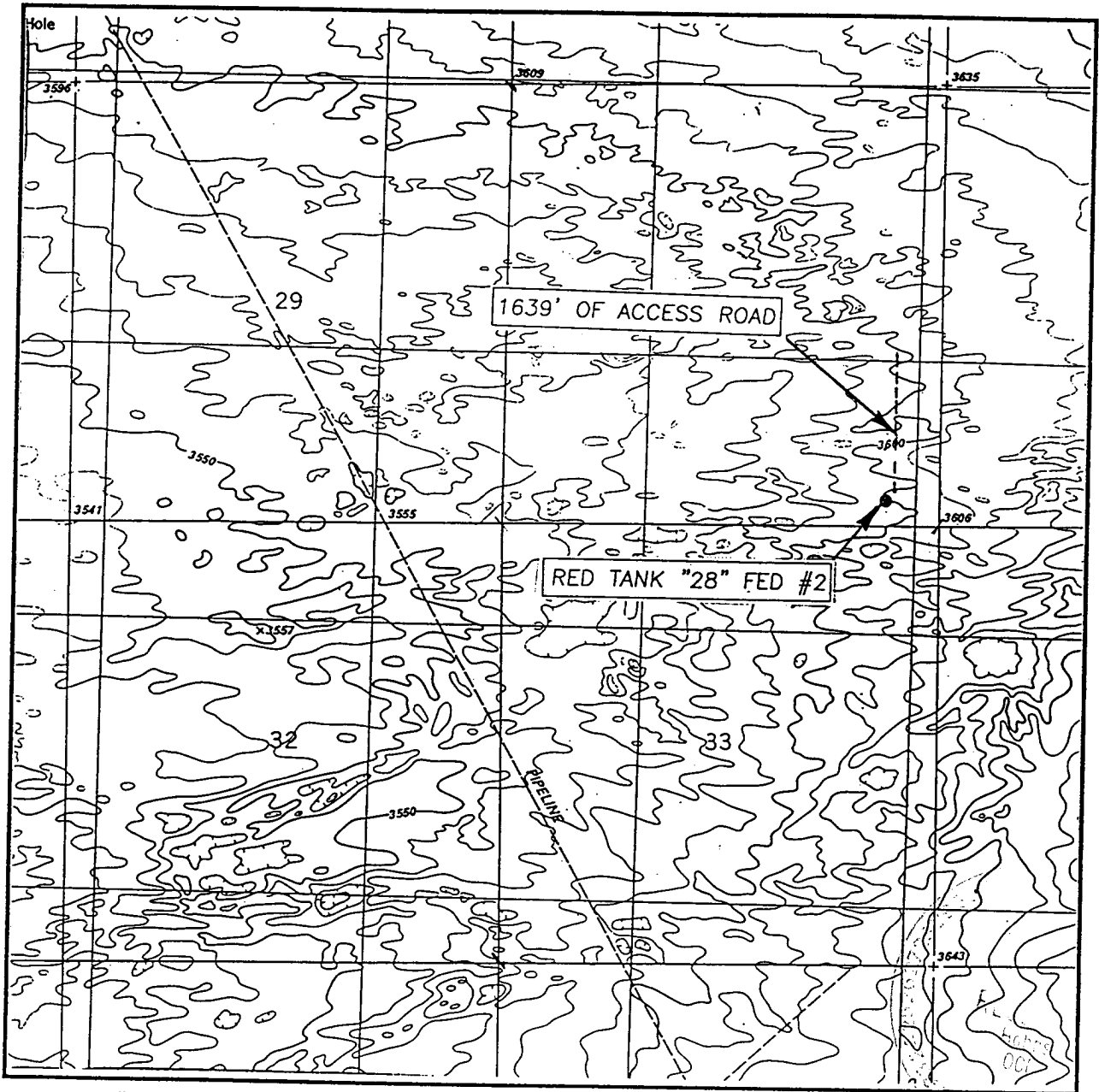
ELEVATION 3598'

OPERATOR POGO PRODUCING COMPANY

LEASE RED TANK "28" FEDERAL

JOHN WEST SURVEYING  
HOBBS, NEW MEXICO  
(505) 393-3117

# LOCATION VERIFICATION MAP



SCALE: 1" = 2000'

CONTOUR INTERVAL: 10'  
BOOTLEG RIDGE, N.M.

SEC. 28 TWP. 22-S RGE. 32-E

SURVEY N.M.P.M.

COUNTY LEA

DESCRIPTION 330' FSL & 660' FEL

ELEVATION 3598'

OPERATOR POGO PRODUCING COMPANY

LEASE RED TANK "28" FEDERAL

U.S.G.S. TOPOGRAPHIC MAP  
BOOTLEG RIDGE, N.M.

JOHN WEST SURVEYING  
HOBBS, NEW MEXICO  
(505) 393-3117

# APPLICATION TO DRILL

POGO PRODUCING COMPANY  
RED TANK "28 FEDERAL # 2  
UNIT "P" SECTION 28  
T22S-R32E LEA CO. NM

In response to questions asked under Section II of Bulletin NTL-6 the following information on the above well is provided for your consideration.

1. Location: 330' FSL & 660' FEL SEC. 28 T22S-R32E LEA CO. NM
2. Elevation above Sea Level: 3598' GR.
3. Geologic name of surface formation: Quaternary Aeolian Deposits.
4. Drilling tools and associated equipment: Conventional rotary drilling rig using drilling mud as a circulating medium for solids removal from hole.
5. Proposed drilling depth: 8900'
6. Estimated tops of geological markers:

Basal Anhydrite	4210'	Cherry Canyon	5539'
Delaware Lime	4670'	Brushy Canyon	6793'
Bell Canyon	4732	Bone Spring	8618'
7. Possible mineral bearing formations:

Brushy Canyon	Oil
Bone Spring	Oil
8. Casing program:

Hole size	Interval	OD of casing	Weight	Thread	Collar	Grade
25"	0-40	20"	NA	NA	NA	Conductor
17½"	0-1000'	13 3/8"	54.5	8-R	ST&C	J-55
8 5/8"	0-4700'	8 5/8"	32	8-R	ST&C	S-80 J-55
5½"	0-8900'	5½"	17 & 15.5	8-R	LT&C	J-55

# APPLICATION TO DRILL

POGO PRODUCING COMPANY  
RED TANK "28 FEDERAL # 2  
UNIT "P" SECTION 28  
T22S-R32E LEA CO. NM

## 9. CASING SETTING & CEMENTING:

20"	Conductor	Set 40' of 20" conductor pipe and cement to surface with Redi-mix.
13 3/8"	Surface	Set 1000' of 13 3/8" 54.5# J-55 ST&C casing. Cement with 1000 Sx. of Class "C" cement + additives, circulate cement to surface.
8 5/8"	Intermediate	Set 4700' of 8 5/8" 32# S-80 & J-55 ST&C casing. Cement with 1800 Sx. of Class "C" cement + 2% CaCl + 1/4# Flocele/Sx. circulate cement to surface.
5 1/2"	Production	Set 8900' of 5 1/2" casing as folloes: 2900' of 5 1/2" 17# J-55 LT&C, 5000' of 5 1/2" 15.5# J-55 LT&C, 1000' of 5 1/2" 17# J-55 LT&C casing. Cement 1st stage with 600 Sx. of Class "H" Premium Plus + additives, Cement 2nd stage with 600 Sx. of Class "H" cement plus additives. DV tool to be at 6200'±. estimate top of 3000' from surface.

10. PRESSURE CONTROL EQUIPMENT: Exhibit "E" shows a 900 Series 3000 PSI working pressure B.O.P. consisting of an annular bag type preventor, middle blind rams and bottom pipe rams. The B.O.P. will be nipped up on the 8 5/8" casing and tested to API specifications. The B.O.P. will be operated at least once in each 24 hour period and the blind rams will be operated when drill pipe is out of hole on trips. Full opening stabbing valve and upper kelly cock will be utilized. Exhibit "E-1" shows a hydraulically operated closing unit and a 2" 3000 PSI choke manifold with dual adjustable chokes. No abnormal pressures or temperatures are expected.

## 11. PROPOSED MUD CIRCULATING SYSTEM:

DEPTH	MUD WT.	VISC.	FLUID LOSS	TYPE MUD SYSTEM
40-1000'	8.4-8.7	29-34	NC	Fresh water spud mud add paper to control seepage.
1000-4700'	10.0-10.3	29-36	NC	Brine water use paper to control seepage and high viscosity sweeps to clean hole.
4700-8900'	8.4-8.7	29-38	NC	Fresh water use fresh water Gel for Viscosity control & High viscosity sweeps to clean hole. If water loss is required use a Polymer mud system.

Sufficient mud materials will be kept on location at all times in order to combat lost circulation, or unexpected kicks. In order to run DST's, open hole logs, and casing viscosity and/or water loss may have to be adjusted to meet these needs.

APPLICATION TO DRILL

POGO PRODUCING COMPANY  
RED TANK "28 FEDERAL # 2  
UNIT "P" SECTION 28  
T22S-R32E LEA CO. NM

12. LOGGING, CORING, & TESTING PROGRAM:

- A. Open hole logs: Run Dual Induction, SNP, LDT, CNL, Gamma Ray, Caliper from TD back to 47000'.
- B. Cased hole logs: Run Gamma Ray, Neutron log from 4700' to surface. Run a collar locator log across pay interval after the production casing is run.
- C. Mud logger will be on hole from 4700' to TD. No DST's or cores are planned.

13. POTENTIAL HAZARDS:

No abnormal pressures or temperatures are expected. There is no known presence of H<sup>2</sup>S in this area. If H<sup>2</sup>S is encountered the operator will comply with the provisions of Onshore Oil and Gas Order No. 6. No lost circulation is expected to occur. All personnel will be familiar with all aspects of safe operation of equipment being used to drill this well. Estimated BHP 4250 PSI, and Estimated BHT 170°.

14. ANTICIPATED STARTING DATE AND DURATION OF OPERATION:

Road and location construction will begin after the BLM has approved the APD. Anticipated spud date will be as soon after BLM approval and as soon as a rig will be available. Move in operation and drilling is expected to take 30 days. If production casing is run then an additional 30 days will be needed to complete well and construct surface facilities and/or lay flowlines in order to place well on production.

15. OTHER FACETS OF OPERATIONS:

After running casing, cased hole Gamma Ray, Neutron Collar logs will be run from TD back to all possible productive zones. The Bone Spring formation will be perforated and stimulated in order to establish production. The well will be swab tested and potentialized as an oil well.



13-A

## HYDROGEN SULFIDE DRILLING OPERATIONS PLAN

1. All Company and Contract personnel admitted on location must be trained by a qualified H<sub>2</sub>S safety instructor to the following:
  - A. Characteristics of H<sub>2</sub>S
  - B. Physical effects and hazards
  - C. Proper use of safety equipment and life support systems.
  - D. Principle and operation of H<sub>2</sub>S detectors, warning system and briefing areas.
  - E. Evacuation procedure, routes and first aid.
  - F. Proper use of 30 minute pressure demand air pack.
2. H<sub>2</sub>S Detection and Alarm Systems
  - A. H<sub>2</sub>S detectors and audio alarm system to be located at bell nipple, end of blooie line (mud pit) and on derrick floor or doghouse.
3. Windsack and/or wind streamers
  - A. Windsack at mudpit area should be high enough to be visible.
  - B. Windsack at briefing area should be high enough to be visible.
  - C. There should be a windsack at entrance to location.
4. Condition Flags and Signs
  - A. Warning sign on access road to location.
  - B. Flags to be displayed on sign at entrance to location. Green flag, normal safe condition. Yellow flag indicates potential pressure and danger. Red flag, danger, H<sub>2</sub>S present in dangerous concentration. Only emergency personnel admitted to location.
5. Well control equipment
  - A. See exhibit "E" & "E-1"
6. Communication
  - A. While working under masks chalkboards will be used for communication.
  - B. Hand signals will be used where chalk board is inappropriate.
  - C. Two way radio will be used to communicate off location in case of emergency help is required. In most cases cellular telephones will be available at most drilling foreman's trailer or living quarters.
7. Drillstem Testing
  - A. Exhausts will be watered.
  - B. Flare line will be equipped with an electric ignitor or a propane pilot light in case gas reaches the surface.
  - C. If the location is near to a dwelling a closed DST will be performed.

## HYDROGEN SULFIDE DRILLING OPERATIONS PLAN

8. Drilling contractor supervisor will be required to be familiar with the effects H<sub>2</sub>S has on tubular goods and other mechanical equipment.
9. If H<sub>2</sub>S is encountered, mud system will be altered if necessary to maintain control of formation. A mud gas separator will be brought into service along with H<sub>2</sub>S scavengers if necessary.

SURFACE USE PLAN

POGO PRODUCING COMPANY  
RED TANK "28" FEDERAL # 2  
UNIT "P" SECTION 28  
T22S-R32E LEA CO. NM

1. EXISTING ROADS: Area maps, Exhibit "B" is a reproduction of a County General Highway Map. Exhibit "C" is a reproduction of a USGS Topographic Map, showing existing roads and proposed roads. All existing roads will be maintained in a condition equal to or better than current conditions. Any new roads will be constructed to BLM specifications.
  - A. Exhibit "A" shows the proposed well site as staked.
  - B. From Hobbs take U.S. Hi-way 62-180 west toward Carlsbad New Mexico go 38 miles to CR-29 turn South go 14 miles to MILLS Ranch Road, Turn Left go 5.2 miles to disposal well on the North side of road, turn Right and go .85 miles to well # 5 bear Southwest and go to well # 6 in section 28 turn south on new lease road go .3 miles to location.
  - C. Lay flowline and construct powerline along road R-O-W as shown on Exhibit "F".
2. PLANNED ACCESS ROADS: Approximately .3 miles of road will be constructed.
  - A. The access road will be crowned and dirched to a 12'00" wide travel surface with a 40' right-of-way.
  - B. Gradient on all roads will be less than 5.00%.
  - C. Turn outs will be constructed as necessary.
  - D. If needed, road will be surfaced with a minimum of 4" of caliche. This material will be obtained from a local source.
  - E. Centerline for the new access road has been flagged. Earthwork will be as required by field conditions.
  - F. Culverts in the access road will not be used. The road will be constructed to utilize low water crossings for drainage as required by the Topography.
3. LOCATION OF EXISTING WELLS IN A ONE-MILE RADIUS EXHIBIT "A-1"

A. Water wells	-	None known
B. Disposal wells	-	One approximately 1.2 miles Northwest.
C. Drilling wells	-	None Known
D. Producing wells	-	As shown on Exhibit "A-1"
E. Abandoned wells	-	As shown on Exhibit "A-1"

SURFACE USE PLAN

POGO PRODUCING COMPANY  
RED TANK "28" FEDERAL # 2  
UNIT "P" SECTION 28  
T22S-R32E LEA CO. NM

4. If on completion this well is a producer the operator will lay pipelines and construct powerlines along existing road R-O-W's or other existing R-O-W's. Possible routes of pipelines, flowlines and powerlines are shown on Exhibit "F".

5. LOCATION AND TYPE OF WATER SUPPLY:

Water will be purchased locally from a commercial source and trucked over the access roads or piped to location in flexible lines laid on top of the ground.

6. SOURCE OF CONSTRUCTION MATERIAL:

If possible construction material will be obtained from the excavation of drill site, if additional material is needed it will be obtained from a local source and transported over the access roads as shown on Exhibit "C".

7. METHODS OF HANDLING WASTE MATERIAL:

- A. Drill cuttings will be disposed of in the reserve pits.
- B. All trash, junk and other waste-material will be contained in trash cages or trash bins to prevent scattering. When the job is completed all contents will be removed and disposed of in a approved sanitary land fill.
- C. Salts remaining after completion of well will be picked up by the supplier, including broken sacks.
- D. Waste water from living quarters will be drained into holes with a minium of 10'. These holes will be covered during drilling and will be back filled when the well is completed. A Porto-John will be provided for the rig crews. This equipment will be properly maintained during the drilling and completion operations and will be removed when all operations are complete.
- E. Remaining drilling fluids will be allowed to evaporate in the reserve pits until the pits are dry enough to be broken out for furthred drying. If the drilling fluids do not evaporate in a reasonable time they will be hauled off by transports to a state approve disposal site. Later pips will be broken out to speed drying. Water produced during completion will be put in reserve pits. Oil and condensate produced will be put in storage tanks and sold.

8. ANCILLARY FACILITIES:

- A. No camps or air strips will be constructed on location.

## SURFACE USE PLAN

POGO PRODUCING COMPANY  
RED TANK "28" FEDERAL # 2  
UNIT "P" SECTION 28  
T22S-R32E LEA CO. NM

### 9. WELL SITE LAYOUT

- A. Exhibit "D" shows the proposed well site layout.
- B. This exhibit indicated proposed location of reserve and sump pits and living facilities.
- C. Mud pits in the active circulating system will be steel pits & the reserve pit is proposed to be unlined unless subsurface condition encountered during pit construction indicate that lining is needed for lateral containment of fluids.
- D. If needed, the reserve pit is to be lined with polyethelene. The pit liner will be 6 mils thick. Pit liner will extend a minimum 2'00" over the reserve pits dikes where the liner will be anchored down.
- E. The reserve pit will be fenced on three sides with four strands of barbed wire during drilling and completion phases. The fourth side will be fenced after all drilling operations have ceased. If the well is a producer, the reserve pit fence will be torn down. The reserve pit and those areas of the location not essential to production facilities will be reclaimed and seeded per BLM requirements.

### 10. PLANS FOR RESTORATION OF SURFACE

Rehabilitation of the location and reserve pit will start in a timely manner after all drilling operations cease. The type of reclamation will depend on whether the well is a producer or a dry hole.

However, in either event, the reserve pit will be allowed to dry properly, and fluid removed and disposed of in accordance with Article 7.B as previously noted. The pit area will then be leveled and contoured to conform to the original and surrounding area. Drainage systems, if any, will be reshaped to the original configuration with provisions made to alleviate erosion. These may need to be modified in certain circumstances to prevent inundation of the location's pad and surface facilities. After the area has been shaped and contoured, topsoil from the spoil pile will be placed over the disturbed area to the extent possible. Revegetation procedures will comply with BLM standards.

If the well is a dry hole, the pad and road area will be contoured to match the existing terrain. Topsoil will be spread to the extent possible. Revegetation will comply with BLM standards.

Should the well be a producer, the previously noted procedures will apply to those areas which are not required for production facilities.

SURFACE USE PLAN

POGO PRODUCING COMPANY  
RED TANK "28" FEDERAL # 2  
UNIT "P" SECTION 28  
T22S-R32E LEA CO. NM

11. OTHER INFORMATION:

- A. Topography consists of sand dunes with a slight dip toward the West. Deep sandy soil supports native grasses, mesquite, and shinnery Oak.
- B. Surface is owned by the Bureau of Land Management U.S. Department of Interior. Surface is used for grazing of livestock and is leased to ranchers for this purpose.
- C. An archaeological survey will be conducted and copies of the survey will be filed in the Carlsbad Office of The Bureau of Land Management.
- D. There are no dwellings or habitation within three miles of this location.

12. OPERATORS REPRESENTATIVE:

Before construction:

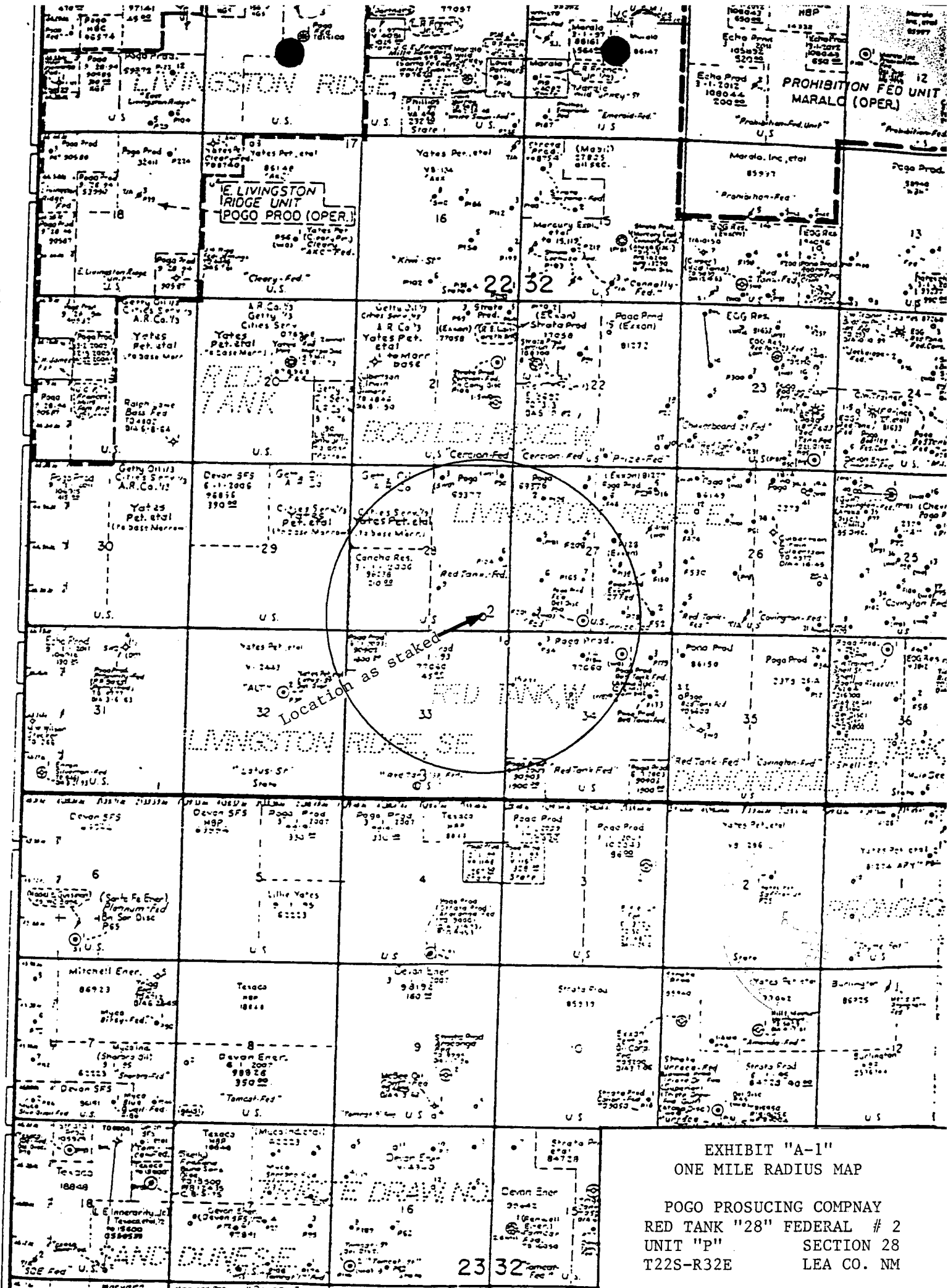
TIERRA EXPLORATION INC.  
P.O. BOX 2188  
HOBBS, NEW MEXICO 88241  
OFFICE PHONE 505-391-8503  
JOE T. JANICA

During and after construction:

POGO PRODUCING COMPANY  
P.O. BOX 10340  
MIDLAND, TEXAS 79702-7340  
OFFICE PHONE 915-685-8100  
MR. RICHARD WRIGHT 915-685-8140

13. CERTIFICATION: - I hereby certify that I, or persons under my direct supervision, have inspected the proposed drill site and access route; that I am familiar with the conditions which currently exist; that the statements made in this plan are to the best of my knowledge, true and correct; and that the work associated with the operations proposed herein will be performed by Pogo Producing company, its contractors/subcontractors is in the conformity with this plan and the terms and conditions under which it is approved. This statement is subject to the provision of U.S.C. 1001 for the filing of a false statement.

NAME : Joe T. Janica  
DATE : 09/16/02  
TITLE : Agent



POGO PRODUCING COMPANY  
RED TANK "28" FEDERAL # 2  
UNIT "P" SECTION 28  
T22S-R32E LEA CO. NM

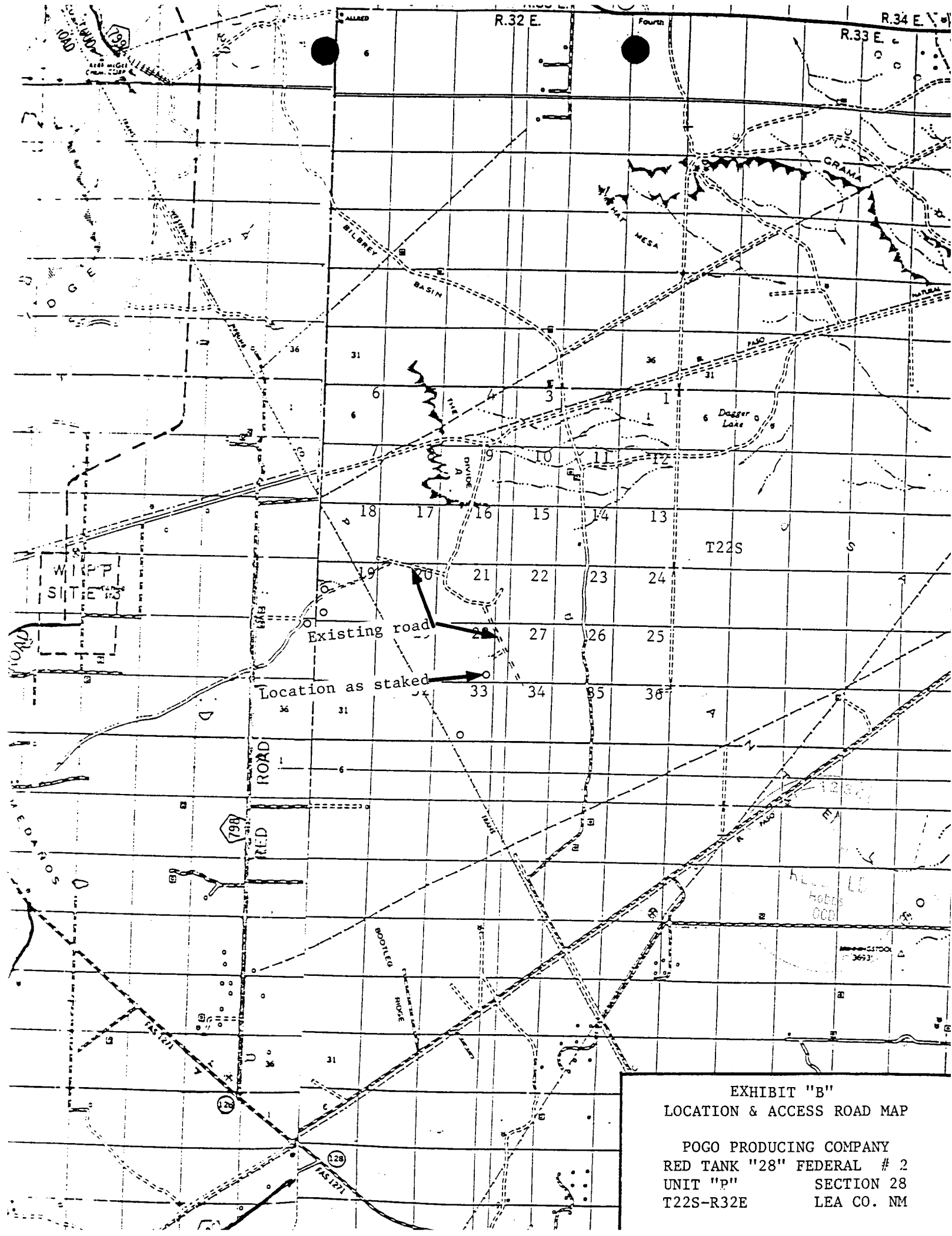


EXHIBIT "B"  
LOCATION & ACCESS ROAD MAP

POGO PRODUCING COMPANY  
RED TANK "28" FEDERAL # 2  
UNIT "P" SECTION 28  
T22S-R32E LEA CO. NM



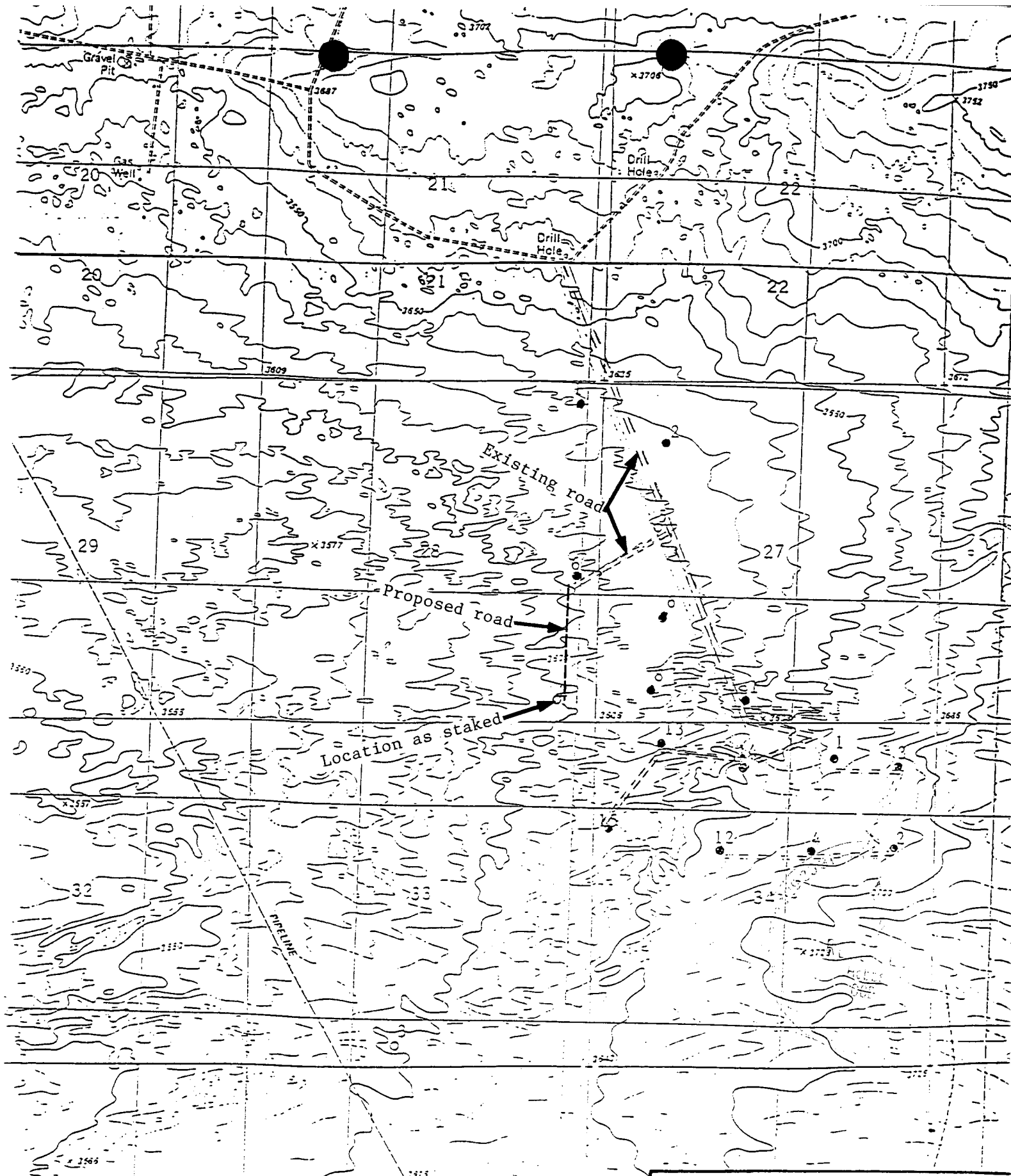
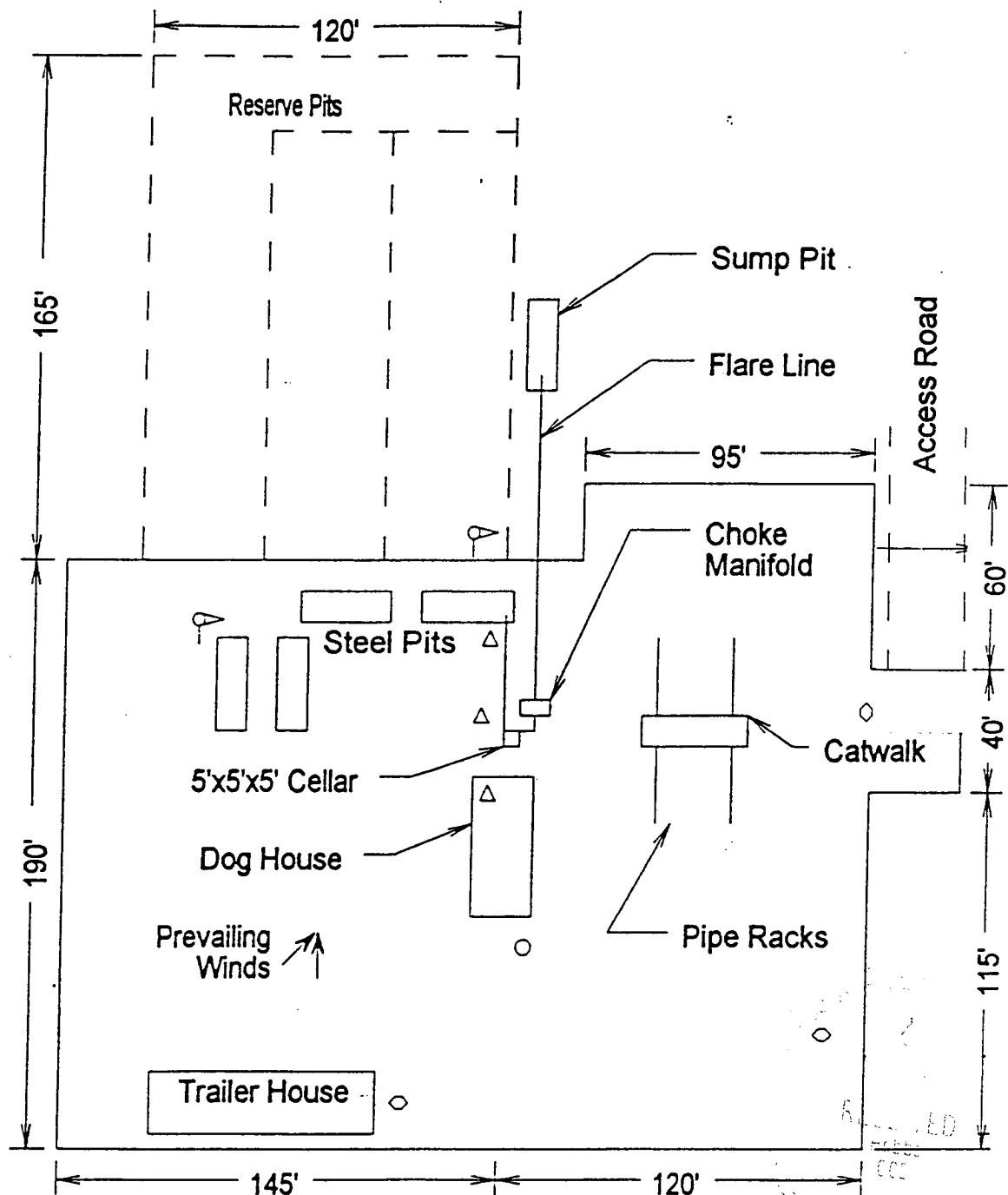


EXHIBIT "C"  
TOPOGRAPHIC MAP SHOWING  
ROADS & DIRECTIONS TO

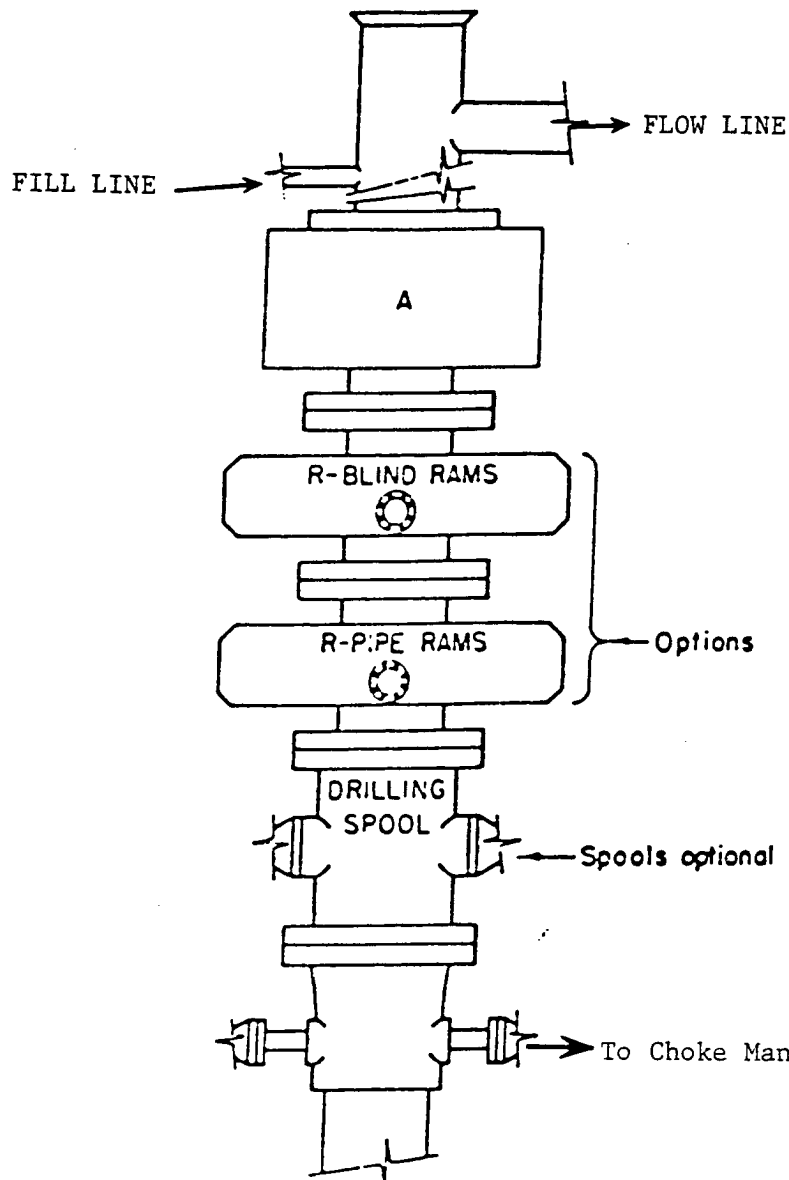
POGO PRODUCING COMPANY  
RED TANK "28" FEDERAL # 2  
UNIT "P" SECTION 28  
T22S-R32E LEA CO. NM



- ⚓ Wind Direction Indicators  
(wind sock or streamers)
- △ H2S Monitors  
(alarms at bell nipple and shale shaker)
- Briefing Areas
- Remote BOP Closing Unit
- Sign and Condition Flags

EXHIBIT "D"  
RIG LAY OUT PLAT

POGO PRODUCING COMPANY  
RED TANK "28" FEDERAL # 2  
UNIT "P" SECTION 28  
T22S-R32E LEA CO. NM



# **ARRANGEMENT SRRA**

900 Series  
3000 PSI WP

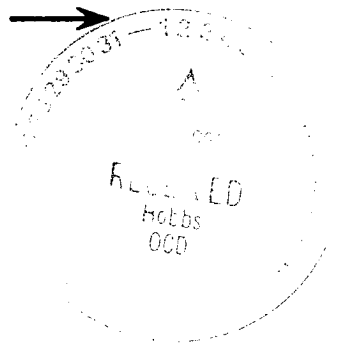


EXHIBIT "E"  
SKETCH OF B.O.P. TO BE USED ON

POGO PRODUCING COMPANY  
RED TANK "28" FEDERAL # 2  
UNIT "P" SECTION 28  
T22S-R32E LEA CO. NM

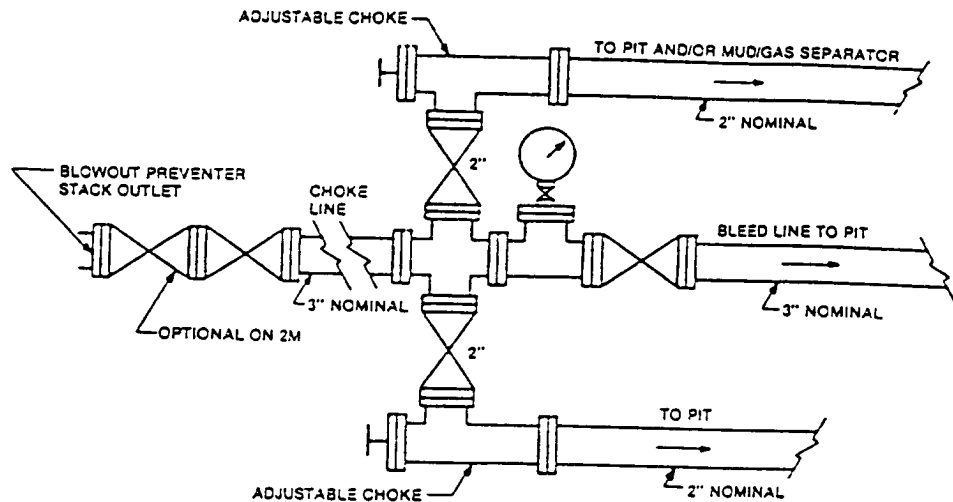


FIGURE K-1. Typical choke manifold assembly for 2M and 3M rated working pressure service — surface installation.

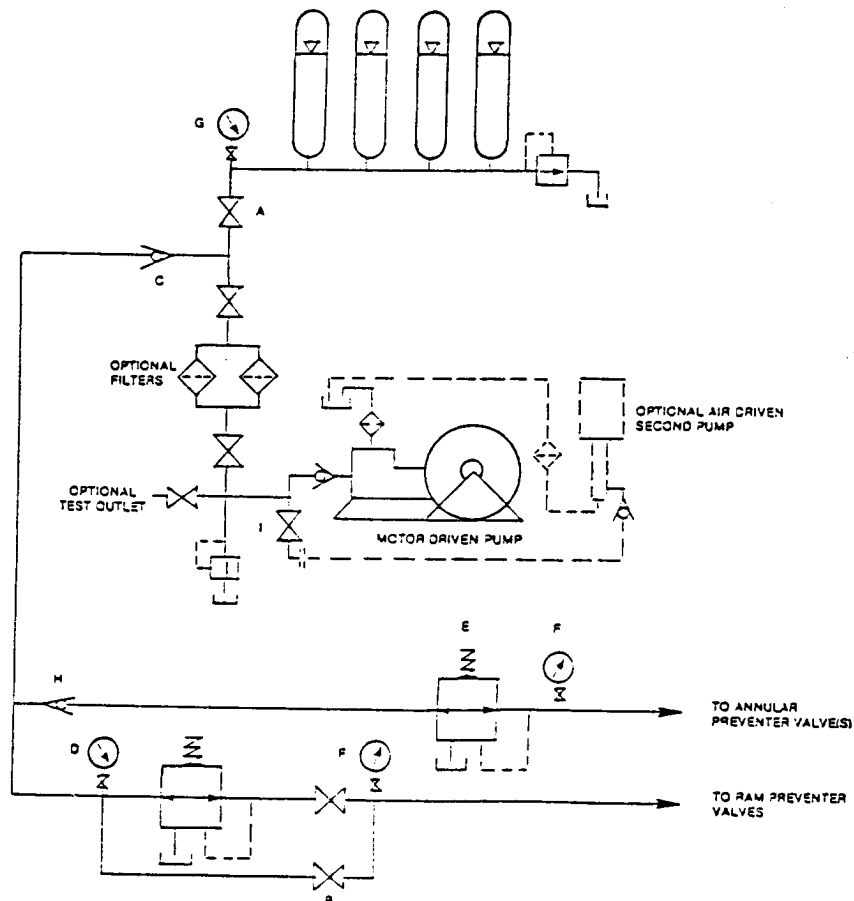


FIGURE K6-1. The schematic sketch of an accumulator system shows required and optional components.

EXHIBIT "E-1"  
CHOKE MANIFOLD & CLOSING UNIT

POGO PRODUCING COMPANY  
RED TANK "28" FEDERAL # 2  
UNIT "P" SECTION 28  
T22S-R32E LEA CO. NM

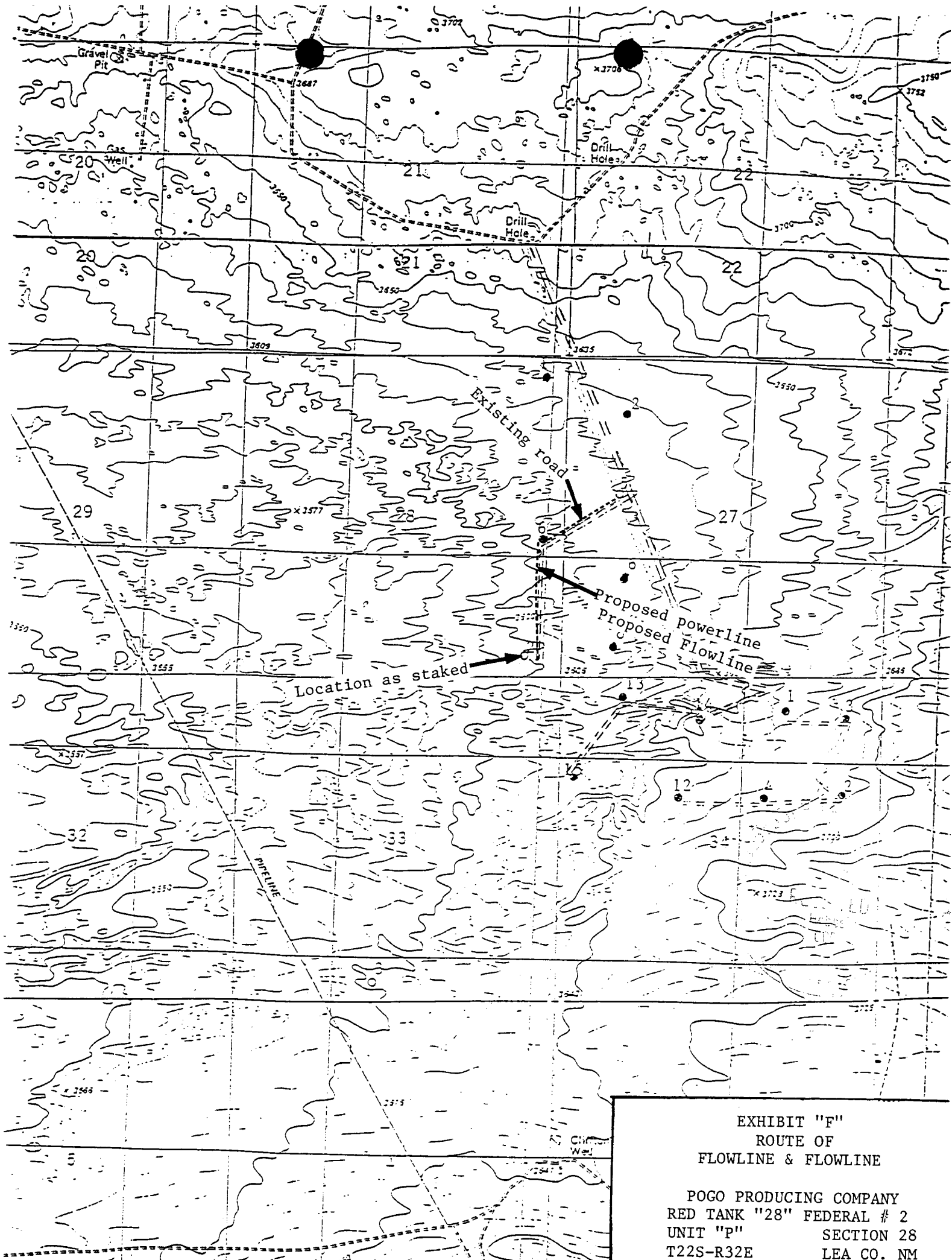


EXHIBIT "F"  
ROUTE OF  
FLOWLINE & FLOWLINE

POGO PRODUCING COMPANY  
RED TANK "28" FEDERAL # 2  
UNIT "P" SECTION 28  
T22S-R32E LEA CO. NM