

District I  
1625 N. French Dr., Hobbs, NM 88240  
District II  
1301 W. Grand Avenue, Artesia, NM 88210  
District III  
1000 Rio Brazos Road, Aztec, NM 87410  
District IV  
1220 S. St. Francis Dr., Santa Fe, NM 87505

State of New Mexico  
Energy Minerals and Natural Resources

Form C-101  
Revised March 17, 1999

Oil Conservation Division  
1220 South St. Francis Dr.  
Santa Fe, NM 87505

Submit to appropriate District Office  
State Lease - 6 Copies  
Fee Lease - 5 Copies

☐ AMENDED REPORT

**APPLICATION FOR PERMIT TO DRILL, RE-ENTER, DEEPEN, PLUGBACK, OR ADD A ZONE**

<sup>1</sup> Operator Name and Address <b>Devon Energy Production Company, LP</b> 20 North Broadway, Ste 1500 Oklahoma City, OK 73102		<sup>2</sup> OGRID Number <b>6137</b>
		<sup>3</sup> API Number <b>30-025-36072</b>
<sup>3</sup> Property Code <b>30932</b>	<sup>5</sup> Property Name <b>Sapphire 6 State</b>	<sup>6</sup> Well No. <b>1</b>

<sup>7</sup> Surface Location

UL or lot no.	Section	Township	Range	Lot Idn	Feet from the	North/South line	Feet from the	East/West line	County
<b>P</b>	<b>6</b>	<b>22S</b>	<b>33E</b>		<b>660</b>	<b>South</b>	<b>660</b>	<b>East</b>	<b>Lea</b>

<sup>8</sup> Proposed Bottom Hole Location If Different From Surface

UL or lot no.	Section	Township	Range	Lot Idn	Feet from the	North/South line	Feet from the	East/West line	County
<b>Boatleg Ridge, Proposed Pool 1</b> <b>Morrow</b>						<b>Undesignated</b>			
						<sup>10</sup> Proposed Pool 2			

<sup>11</sup> Work Type Code <b>N</b>	<sup>12</sup> Well Type Code <b>G</b>	<sup>13</sup> Cable/Rotary <b>Rotary</b>	<sup>14</sup> Lease Type Code <b>S</b>	<sup>15</sup> Ground Level Elevation <b>3618'</b>
<sup>16</sup> Multiple <b>N</b>	<sup>17</sup> Proposed Depth <b>15,200'</b>	<sup>18</sup> Formation <b>Morrow</b>	<sup>19</sup> Contractor <b>McVay</b>	<sup>20</sup> Spud Date <b>January</b>

<sup>21</sup> Proposed Casing and Cement Program

Hole Size	Casing Size	Casing weight/foot	Setting Depth	Sacks of Cement	Estimated TOC
<b>17 1/2"</b>	<b>13 3/8"</b>	<b>54.5#</b>	<b>950'</b>	<b>620</b>	<b>surf</b>
<b>12 1/4"</b>	<b>9 5/8"</b>	<b>40#</b>	<b>5000'</b>	<b>1387</b>	<b>surf</b>
<b>8 3/4"</b>	<b>7"</b>	<b>26#</b>	<b>12,150'</b>	<b>439</b>	<b>8000'</b>
<b>6 1/8"</b>	<b>4 1/2" Liner</b>	<b>15.1#</b>	<b>11,850' - 15,200'</b>	<b>466</b>	<b>11,850'</b>

22 Describe the proposed program. If this application is to DEEPEN or PLUG BACK, give the data on the present productive zone and proposed new productive zone. Describe the blowout prevention program, if any. Use additional sheets if necessary.

Devon Energy Production Company, LP plans to drill this well to a total depth of 15,200' and complete as a gas well. Should the well be deemed noncommercial, then it will be plugged and abandoned in accordance with the rules established by the New Mexico OCD.

Permit Expires 1 Year From Approval  
Date Unless Drilling Underway

<sup>23</sup> I hereby certify that the information given above is true and complete to the best of my knowledge and belief. Signature: <i>Karen Cottom</i> Printed name: <b>Karen Cottom</b> Title: <b>Engineering Technician</b> Date: <b>12/5/2002</b> Phone: <b>405-228-7512</b>		<b>OIL CONSERVATION DIVISION</b> Approved by: <b>PAUL F. KAUTZ</b> Title: <b>PETROLEUM ENGINEER</b> Approval Date: <b>DEC 13 2002</b> Expiration Date: Conditions of Approval: Attached <input type="checkbox"/>	
--	--	---	--

## DISTRICT I

1825 N. French Dr., Hobbs, NM 88240

## DISTRICT II

611 South First, Artesia, NM 88210

## DISTRICT III

1000 Rio Brazos Rd., Aztec, NM 87410

## DISTRICT IV

2040 South Pacheco, Santa Fe, NM 87505

## State of New Mexico

Energy, Minerals and Natural Resources Department

Form C-102

Revised March 17, 1999

Submit to Appropriate District Office

State Lease - 4 Copies

Fee Lease - 3 Copies

## OIL CONSERVATION DIVISION

2040 South Pacheco

Santa Fe, New Mexico 87504-2088

☐ AMENDED REPORT

## WELL LOCATION AND ACREAGE DEDICATION PLAT

API Number 30-025-36072	Pool Code 72650	Pool Name Boottles Ridge Morrow Undesignated
Property Code 30932	Property Name SAPPHIRE "6"	Well Number 1
OGRID No. 6137	Operator Name DEVON ENERGY PRODUCTION CO., L.P.	Elevation 3618'

## Surface Location

UL or lot No.	Section	Township	Range	Lot Idn	Feet from the	North/South line	Feet from the	East/West line	County
P	6	22 S	33 E		660	SOUTH	660	EAST	LEA

## Bottom Hole Location If Different From Surface

UL or lot No.	Section	Township	Range	Lot Idn	Feet from the	North/South line	Feet from the	East/West line	County
Dedicated Acres 320	Joint or Infill	Consolidation Code	Order No.						

NO ALLOWABLE WILL BE ASSIGNED TO THIS COMPLETION UNTIL ALL INTERESTS HAVE BEEN CONSOLIDATED  
OR A NON-STANDARD UNIT HAS BEEN APPROVED BY THE DIVISION

LOT 4 - 36.39 AC.	LOT 3 - 40.01 AC.	LOT 2 - 40.03 AC.	LOT 1 - 40.03 AC.
LOT 5 - 36.37 AC.			
LOT 6 - 36.35 AC.			
LOT 7 - 36.33 AC.			

Lot - N32°24'55.6"  
Long - W103°36'18.9"

3618.5' 3623.5'  
3611.6' 3609.9'  
660' 660'

**OPERATOR CERTIFICATION**

I hereby certify the the information contained herein is true and complete to the best of my knowledge and belief.

*Karen Cottom*  
Signature

Karen Cottom  
Printed Name

Engineering Technician  
Title

December 5, 2002  
Date

**SURVEYOR CERTIFICATION**

I hereby certify that the well location shown on this plat was plotted from field notes of actual surveys made by me or under my supervision and that the same is true and correct to the best of my belief.

NOVEMBER 25, 2002

Date Surveyed

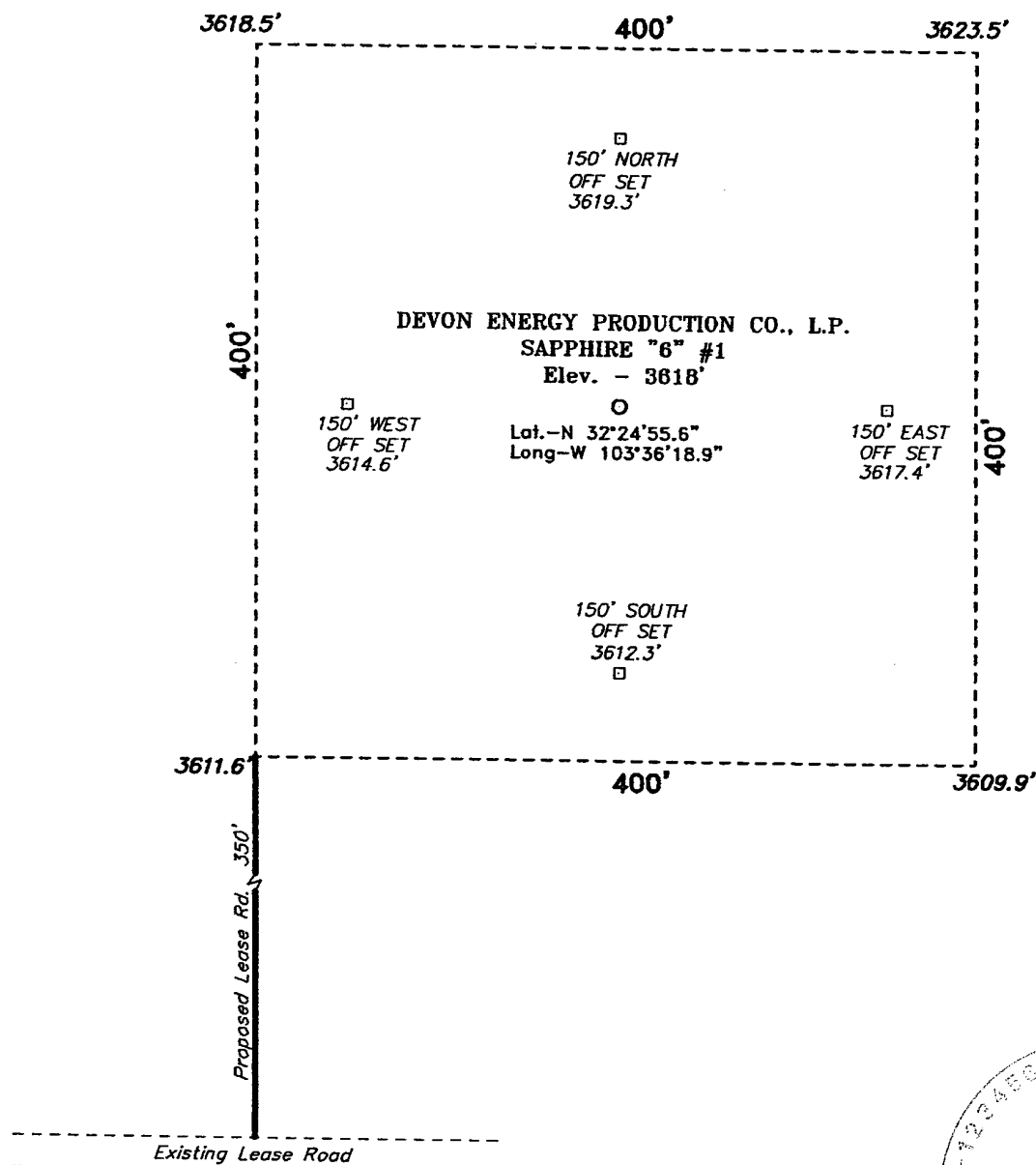
Signature & Seal of Professional Surveyor

NEW MEXICO  
W.O. No. 2879

Certificate No. Gary L. Jones 7977

PROFESSIONAL LAND SURVEYOR  
BASIN SURVEYS

SECTION 6, TOWNSHIP 22 SOUTH, RANGE 33 EAST, N.M.P.M.,  
LEA COUNTY, NEW MEXICO.



Directions to Location:

FROM THE JUNCTION OF CO. RD. 176 AND US HWY 62/180, GO SOUTHEAST ON CO. RD. 176 FOR 6.2 MILES TO BOOTLEG ROAD; THENCE SOUTH FOR 0.6 MILE TO A "Y", AND GO RIGHT FOR 1.6 MILE; THENCE SOUTH FOR 0.8 MILE TO A "Y" AND GO LEFT FOR 1.3 MILE TO AN EL PASO PIPELINE R-O-W; THENCE SOUTH FOR 6.3 MILES; THENCE EAST 0.6 MILE; THENCE NORTH FOR 1.9 MILE PAST CONOCO BOOTLEG COMPRESSOR; THENCE EAST FOR 0.2 MILE TO THE PROPOSED LEASE ROAD.

**BASIN SURVEYS** P.O. BOX 1786 - HOBBS, NEW MEXICO

W.O. Number: 2879 Drawn By: K. GOAD

Date: 11-26-2002 Disk: KJG CD#4 - 2879A.DWG

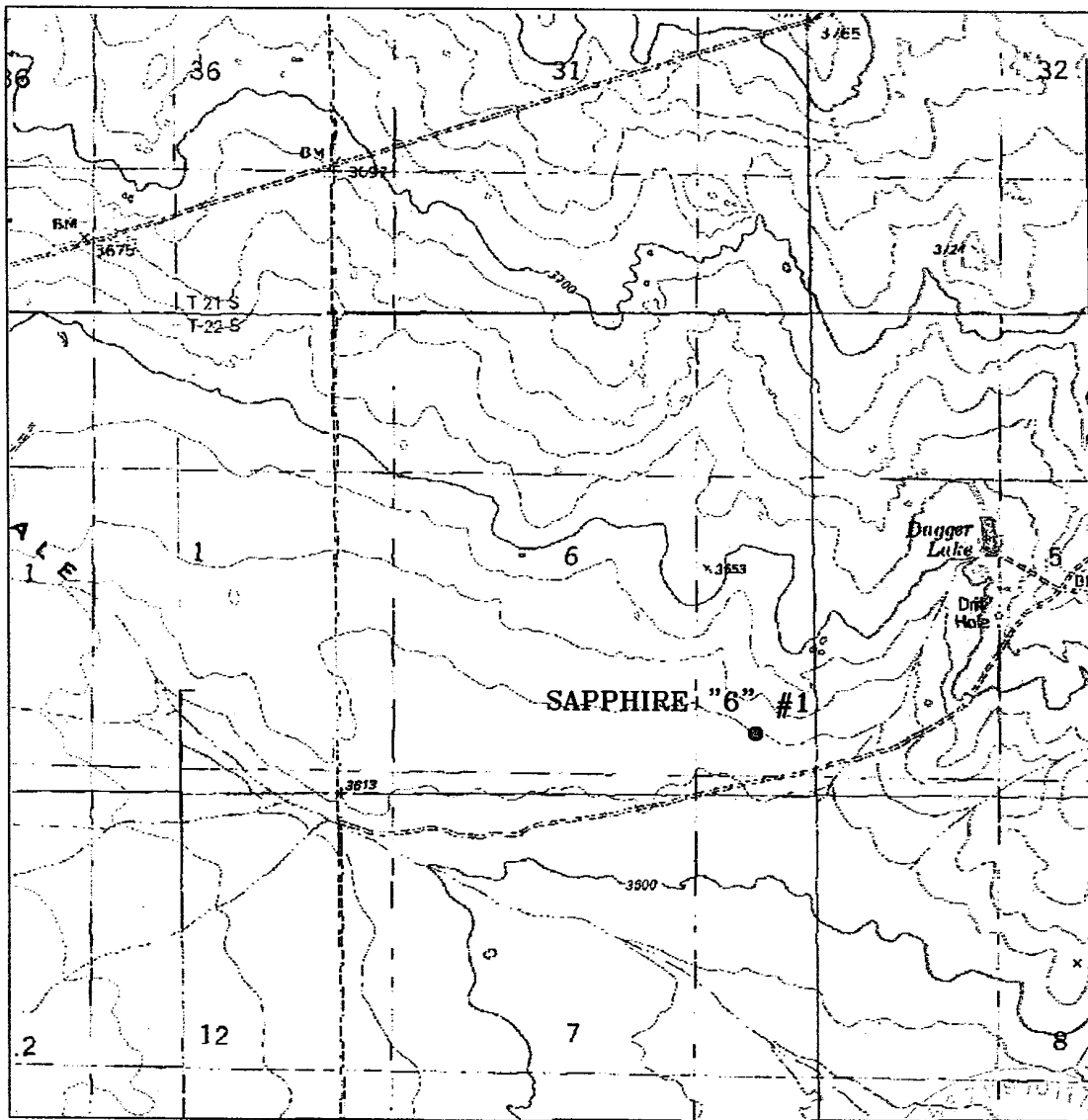
100 0 100 200 FEET  
SCALE: 1" = 100'

**DEVON ENERGY PROD. CO., L.P.**

REF: SAPHIRE "6" No. 1 / Well Pad Topo

THE SAPHIRE "6" No. 1 LOCATED 660' FROM  
THE SOUTH LINE AND 660' FROM THE EAST LINE OF  
SECTION 6, TOWNSHIP 22 SOUTH, RANGE 33 EAST,  
N.M.P.M., LEA COUNTY, NEW MEXICO.

Survey Date: 11-25-2002 Sheet 1 of 1 Sheets



### SAPHIRE "6" #1

Located at 660' FSL and 660' FEL  
Section 6, Township 22 South, Range 33 East,  
N.M.P.M., Lea County, New Mexico.

DEC 20 2002  
RECEIVED  
Hobbs  
OCD

**basin**  
**surveys**  
focused on excellence  
in the oilfield

P.O. Box 1786  
1120 N. West County Rd.  
Hobbs, New Mexico 88241  
(505) 393-7316 - Office  
(505) 392-3074 - Fax  
basinsurveys.com

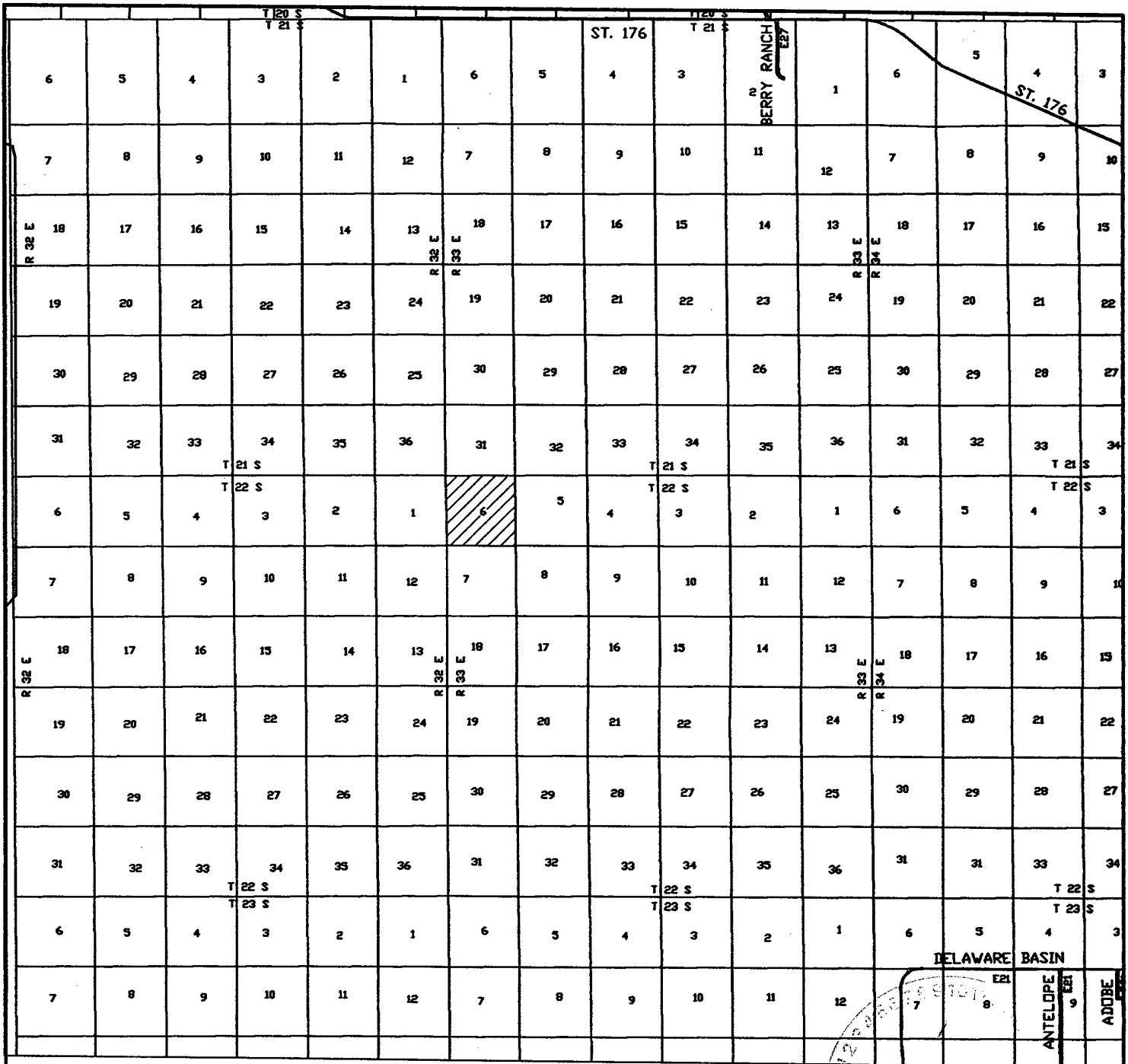
W.O. Number: 2879AA - KJG CD#4

Survey Date: 11-25-2002

Scale: 1" = 2000'


Date: 11-26-2002

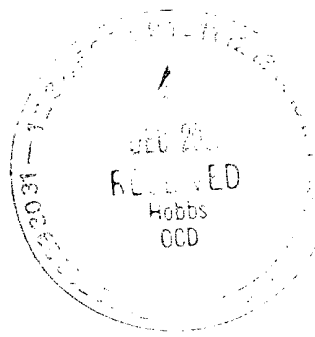
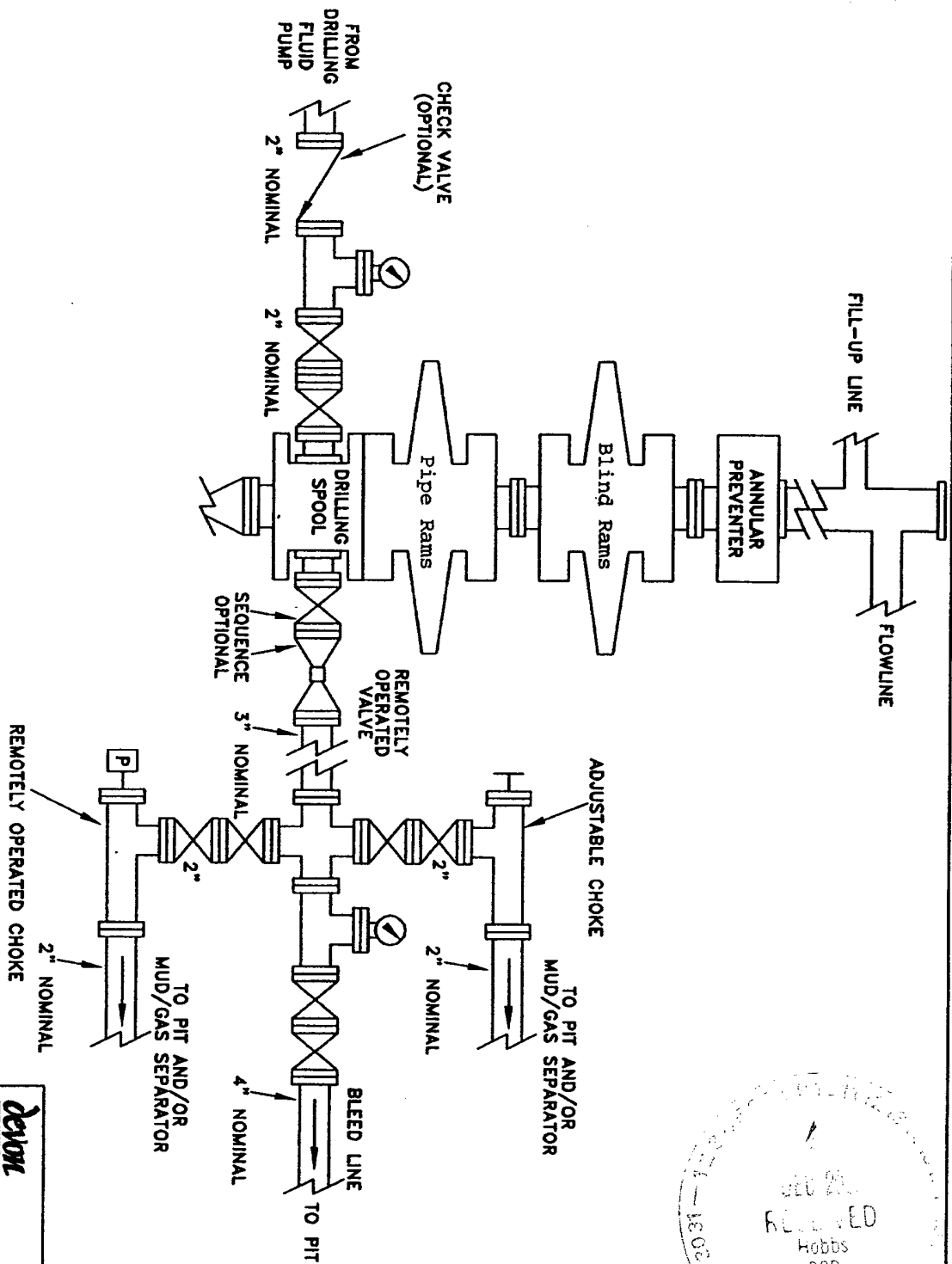
**DEVON ENERGY**  
**PROD. CO., L.P.**



**SAPPHIRE "6" #1**  
 Located at 660' FSL and 660' FEL  
 Section 6, Township 22 South, Range 33 East,  
 N.M.P.M., Lea County, New Mexico.

DELAWARE BASIN  
 ANTELOPE  
 ADORE  
 RECEIVED  
 Hobbs  
 000

 focused on excellence in the oilfield	P.O. Box 1786 1120 N. West County Rd. Hobbs, New Mexico 88241 (505) 393-7316 - Office (505) 392-3074 - Fax basin-surveys.com	W.O. Number: 2879AA - KJG CD#4 Survey Date: 11-25-2002 Scale: 1" = 2 miles Date: 11-26-2002	<b>DEVON ENERGY          PROD. CO., L.P.</b>
---	---	--	--



s:\nm\Plate
5mbope.dwg

PROPOSED 5-M BOPE  
AND CHOKE ARRANGEMENT

EXHIBIT #1

*devon*

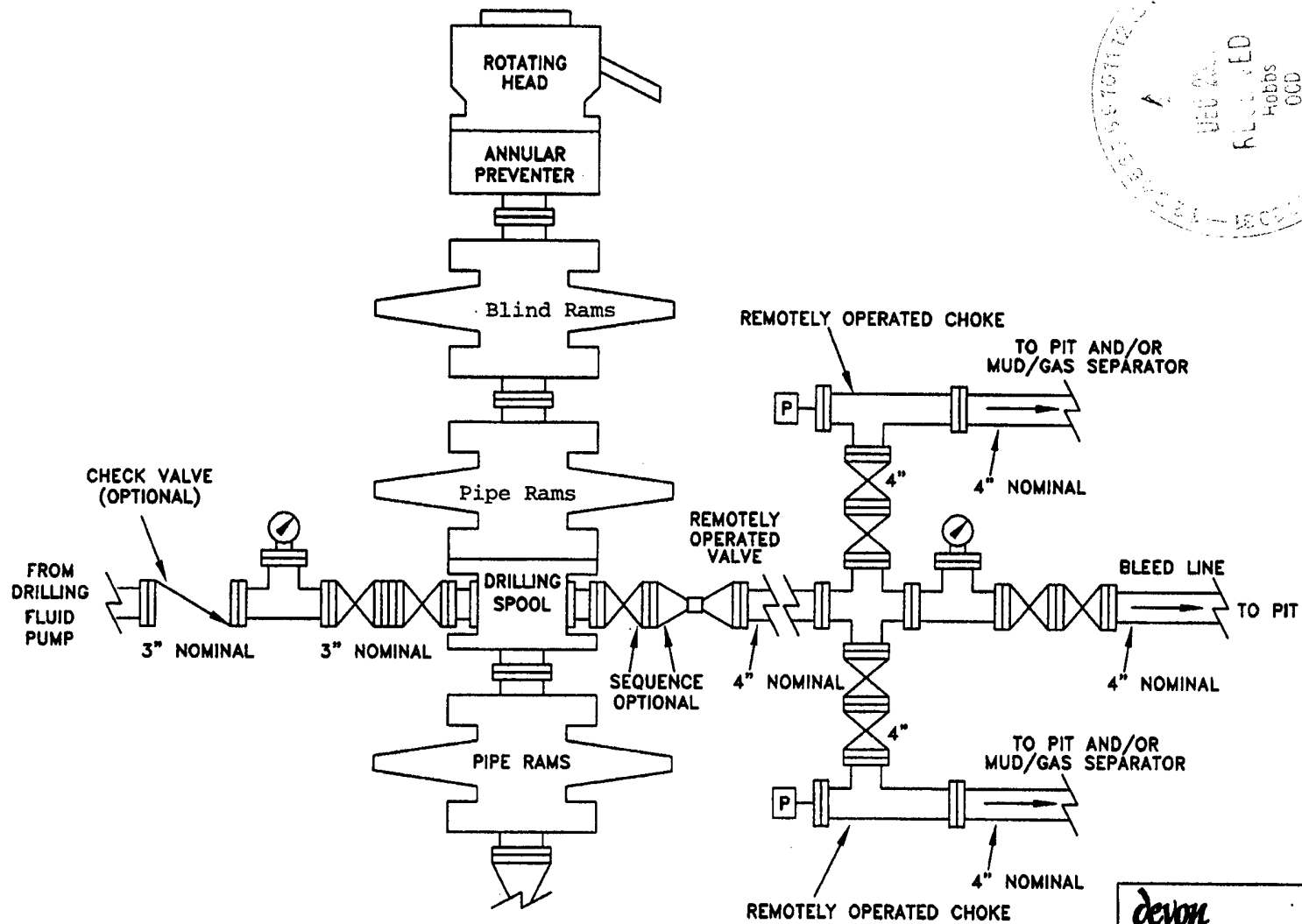
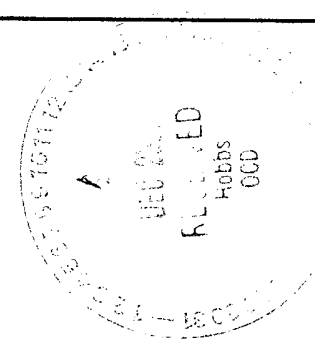


EXHIBIT #1

SCHEMATIC  
PROPOSED 10-M BOPE  
AND CHOKE ARRANGEMENT

s:\...\nm\plots	
10mbope.dwg	

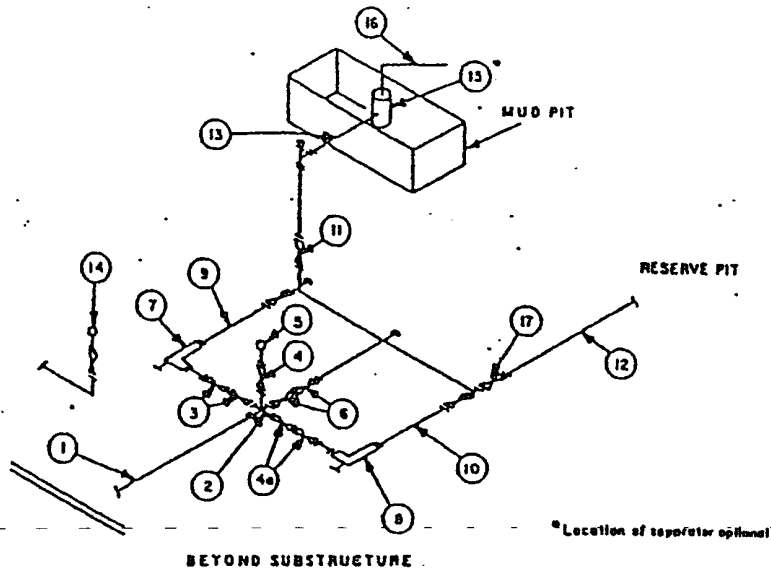
SC

10/00

**MINIMUM CHOKE MANIFOLD**  
3,000, 5,000 and 10,000 PSI Working Pressure

**3 MWP - 5 MWP - 10 MWP**

EXHIBIT # 1



MINIMUM REQUIREMENTS										
No.		3,000 MWP			5,000 MWP			10,000 MWP		
		I.D.	NOMINAL	RATING	I.D.	NOMINAL	RATING	I.D.	NOMINAL	RATING
1	Line from drilling spool		3"	3,000		3"	5,000		3"	10,000
2	Cross 3"x3"x3"x2"			3,000			5,000			
	Cross 3"x3"x3"x3"									10,000
3	Valves(1) Gate <input type="checkbox"/> Plug <input type="checkbox"/> (2)	3-1/8"		3,000	3-1/8"		5,000	3-1/8"		10,000
4	Valve Gate <input type="checkbox"/> Plug <input type="checkbox"/> (2)	1-13/16"		3,000	1-13/16"		5,000	1-13/16"		10,000
4a	Valves(1)	2-1/16"		3,000	2-1/16"		5,000	3-1/8"		10,000
5	Pressure Gauge			3,000			5,000			10,000
6	Valves Gate <input type="checkbox"/> Plug <input type="checkbox"/> (2)	3-1/8"		3,000	3-1/8"		5,000	3-1/8"		10,000
7	Adjustable Choke(3)	2"		3,000	2"		5,000	2"		10,000
8	Adjustable Choke	1"		3,000	1"		5,000	2"		10,000
9	Line		3"	3,000		3"	5,000		3"	10,000
10	Line		2"	3,000		2"	5,000		3"	10,000
11	Valves Gate <input type="checkbox"/> Plug <input type="checkbox"/> (2)	3-1/8"		3,000	3-1/8"		5,000	3-1/8"		10,000
12	Lines		3"	1,000		3"	1,000		3"	2,000
13	Lines		3"	1,000		3"	1,000		3"	2,000
14	Remote reading compound standpipe pressure gauge			3,000			5,000			10,000
15	Gas Separator		2'x5'			2'x5'			2'x5'	
16	Line		4"	1,000		4"	1,000		4"	2,000
17	Valves Gate <input type="checkbox"/> Plug <input type="checkbox"/> (2)	3-1/8"		3,000	3-1/8"		5,000	3-1/8"		10,000

(1) Only one required in Class 3M.

(2) Gate valves only shall be used for Class 10M.

(3) Remote operated hydraulic choke required on 5,000 psi and 10,000 psi for drilling.

**EQUIPMENT SPECIFICATIONS AND INSTALLATION INSTRUCTIONS**

1. All connections in choke manifold shall be welded, studded, flanged or Cameron clamp of comparable rating.
2. All flanges shall be API 6B or 6BX and ring gaskets shall be API RX or BX. Use only BX for 10 MWP.
3. All lines shall be securely anchored.
4. Chokes shall be equipped with tungsten carbide seats and needles, and replacements shall be available.
5. Choke manifold pressure and standpipe pressure gauges shall be available at the choke manifold to assist in regulating chokes. As an alternate with automatic chokes, a choke manifold pressure gauge shall be located on the rig floor in conjunction with the standpipe pressure gauge.
6. Line from drilling spool to choke manifold should be as straight as possible. Lines downstream from chokes shall make turns by large bends or 90° bends using bull plugged tees.
7. Discharge lines from chokes, choke bypass and from top of gas separator should vent as far as practical from the well.