

District I  
1625 N. French Dr., Hobbs, NM 88240  
District II  
1301 W. Grand Avenue, Artesia, NM 88210  
District III  
1000 Rio Brazos Road, Aztec, NM 87410  
District IV  
1220 S. St. Francis Dr., Santa Fe, NM 87505

State of New Mexico  
Energy Minerals and Natural Resources

Form C-101  
Revised June 10, 2003

Oil Conservation Division  
1220 South St. Francis Dr.  
Santa Fe, NM 87505

Submit to appropriate District Office  
State Lease - 6 Copies  
Fee Lease - 5 Copies

☐ AMENDED REPORT

**APPLICATION FOR PERMIT TO DRILL, RE-ENTER, DEEPEN, PLUGBACK, OR ADD A ZONE**

<sup>1</sup> Operator Name and Address SOUTHWEST ROYALTIES, INC. P.O. BOX 11390 MIDLAND, TEXAS 79702		<sup>2</sup> OGRID Number 021355
		<sup>3</sup> API Number 30-025-36474
<sup>3</sup> Property Code 33097	<sup>5</sup> Property Name AFT	<sup>6</sup> Well No. #1

**<sup>7</sup> Surface Location**

UL or lot no.	Section	Township	Range	Lot Idn	Feet from the	North/South line	Feet from the	East/West line	County
C	26	12-S	32-E		760'	NORTH	1980'	WEST	LEA

**<sup>8</sup> Proposed Bottom Hole Location If Different From Surface**

UL or lot no.	Section	Township	Range	Lot Idn	Feet from the	North/South line	Feet from the	East/West line	County

<sup>9</sup> Proposed Pool 1 CAPROCK, EAST DEVONIAN	<sup>10</sup> Proposed Pool 2 CAPROCK, EAST ATOKA
--	--

<sup>11</sup> Work Type Code N	<sup>12</sup> Well Type Code OIL	<sup>13</sup> Cable/Rotary ROTARY	<sup>14</sup> Lease Type Code STATE	<sup>15</sup> Ground Level Elevation 4327'
<sup>16</sup> Multiple SINGLE	<sup>17</sup> Proposed Depth 11,500'	<sup>18</sup> Formation DEVONIAN	<sup>19</sup> Contractor KEY ENERGY	<sup>20</sup> Spud Date 11/15/03

**<sup>21</sup> Proposed Casing and Cement Program**

Hole Size	Casing Size	Casing weight/foot	Setting Depth	Sacks of Cement	Estimated TOC
17-1/2"	12-3/4"	35#	400'	300 SX	SURFACE
11"	8-5/8"	32#	3700'	650 SX	SURFACE
7-7/8"	5-1/2"	17#	11,500'	650 SX	APPROX. 3500'

<sup>22</sup> Describe the proposed program. If this application is to DEEPEN or PLUG BACK, give the data on the present productive zone and proposed productive zone. Describe the blowout prevention program, if any. Use additional sheets if necessary.

- Set 40' of 20" conductor pipe and cement to surface.
- Drill 17-1/2" hole to approximately 400' and run 12-3/4" 35# LS casing and cement to surface with 300 sx.
- Drill 11" hole to approximately 3700' and run 8-5/8" 32# casing. Cement to surface with 650 sx.
- Drill 7-7/8" hole to 11,500' and run 5-1/2" 17# casing. Cement with 650 sx and tie back into intermediate at approximately 3500'.
- Test Devonian Formation.

Note: BOP information attached.

<sup>23</sup> I hereby certify that the information given above is true and complete to the best of my knowledge and belief.

Signature:

Printed name: Dawn M. Howard

Title: Operations Assistant

E-mail Address: dhoward@swrinc.com

Date: 10/31/03

Phone: 432/686-9927

**OIL CONSERVATION DIVISION**

Approved by:

Title: OC DISTRICT SUPERVISOR/GENERAL MANAGER

Approval Date: NOV 07 2003 Expiration Date:

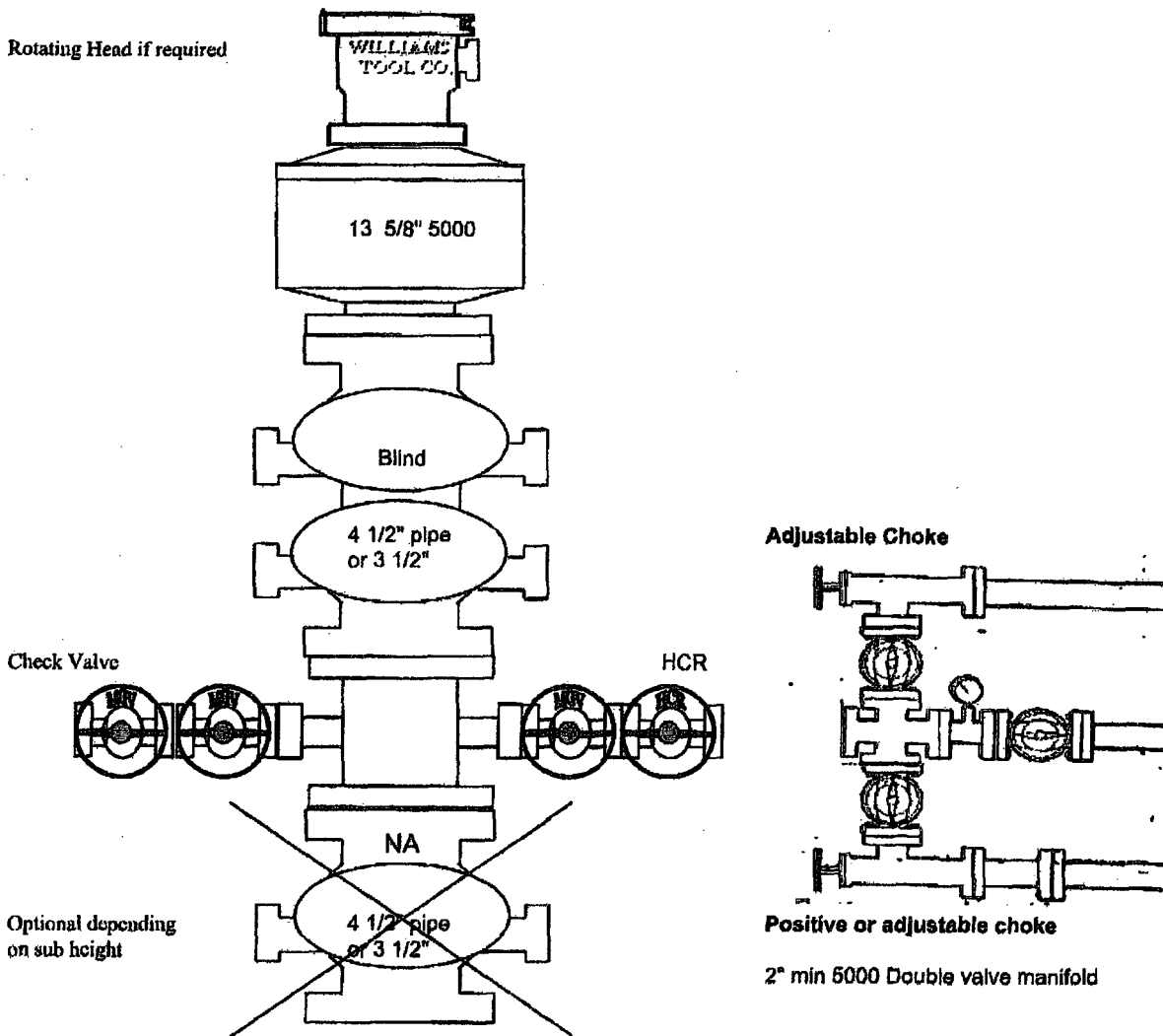
Conditions of Approval:

Attached ☐

Permit Expires 1 Year From Approval  
Date Unless Drilling Underway

# BOPE Schematic

Southwest Royalties #1 A F T



## Other Instructions:

1. Keep inside BOP and full-open TIW safety valve on the rig floor at all times. Test when pressure testing BOP's. all test will be charted, low pressure test will be held for minimum of 1 minute, high pressure test will be held for a minimum of 5 minutes.
2. Test plug of same manufacture of wellhead will be kept on location with spare O-rings.
3. Before all trips in and out, fill out trip sheet's and monitor trip tank every 5 stand's of drill pipe and every stand of drill collars pulled and document on trip sheet to ensure the hole is taking the proper amount of fluid. Fill the hole periodically if drill string is on the bank for extended period of time.
4. All trips should be made at moderate speeds to prevent excessive surge and swab pressures.
5. Open HCR valve and close blind ram's while changing out bit or lower part of BHA. Inform rig crew before opening ram's.
6. Mud pits will be marked and monitored, upon any gain in pit volume due to a kick, stop drilling, raise kelly slowly with mud pump running, kick out pump and check for flow.
7. On drilling breaks, drill 1'- 3' of break and check for flow.
8. Record slow pump rates on both pumps daily, and record on IADC sheet.
9. Observe flowline for flow during logging operations. Keep hole loaded if hole is seeping.
10. BOP and choke manifold will be mechanically checked on each trip and pressure tested every 4 weeks or as dictated by length of well.
11. BOP drills will be held weekly on each tour.
12. Double valve active annulus. Bull plug on one side is acceptable.

## DISTRICT I

P.O. Box 1980, Hobbs, NM 88241-1980

## State of New Mexico

Energy, Minerals and Natural Resources Department

Form C-102

Revised February 10, 1994

Submit to Appropriate District Office

State Lease - 4 Copies

Fee Lease - 3 Copies

## DISTRICT II

P.O. Drawer DD, Artesia, NM 88211-0719

## OIL CONSERVATION DIVISION

P.O. Box 2088

Santa Fe, New Mexico 87504-2088

## DISTRICT III

1000 Rio Brazos Rd., Aztec, NM 87410

## DISTRICT IV

P.O. BOX 2088, SANTA FE, N.M. 87504-2088

## WELL LOCATION AND ACREAGE DEDICATION PLAT

☐ AMENDED REPORT

API Number <b>30-025-36474</b>	Pool Code <b>8930</b>	Pool Name <b>CAPROCK, EAST DEVONIAN</b>
Property Code <b>33097</b>	Property Name <b>AFT</b>	Well Number <b>1</b>
OGRID No. <b>021355</b>	Operator Name <b>SOUTHWEST ROYALTIES, INC.</b>	Elevation <b>4327'</b>

## Surface Location

UL or lot No.	Section	Township	Range	Lot Idn	Feet from the	North/South line	Feet from the	East/West line	County
<b>C</b>	<b>26</b>	<b>12-S</b>	<b>32-E</b>		<b>760'</b>	<b>NORTH</b>	<b>1980'</b>	<b>WEST</b>	<b>LEA</b>

## Bottom Hole Location If Different From Surface

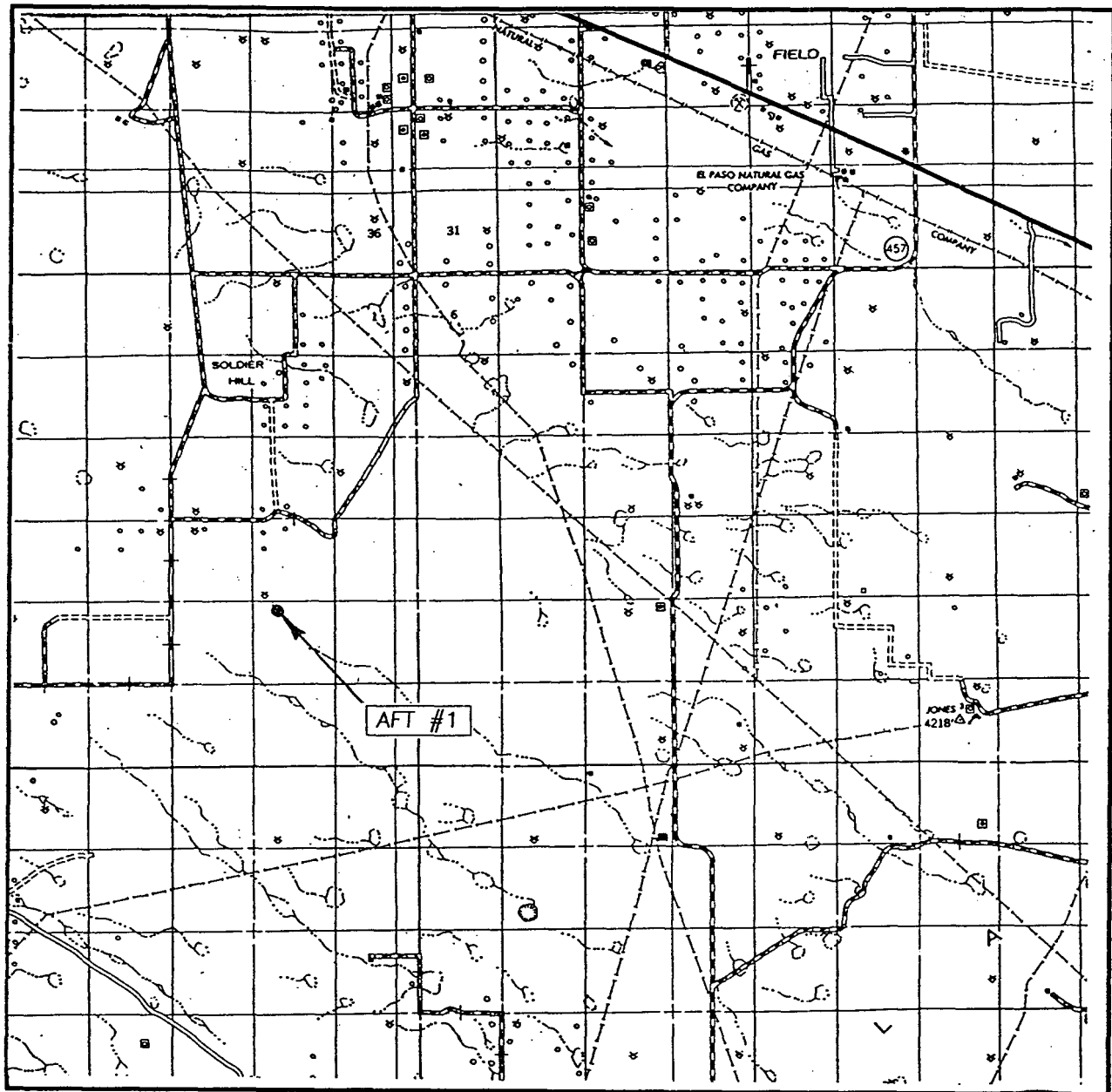
UL or lot No.	Section	Township	Range	Lot Idn	Feet from the	North/South line	Feet from the	East/West line	County

Dedicated Acres <b>40</b>	Joint or Infill	Consolidation Code	Order No.
------------------------------	-----------------	--------------------	-----------

NO ALLOWABLE WILL BE ASSIGNED TO THIS COMPLETION UNTIL ALL INTERESTS HAVE BEEN CONSOLIDATED  
OR A NON-STANDARD UNIT HAS BEEN APPROVED BY THE DIVISION

<p><b>GEODETTIC COORDINATES</b> NAD 27 NME Y = 820806.4 N X = 696639.3 E LAT. 32°15'17.15"N LONG. 103°41'24.34"W</p>		<b>OPERATOR CERTIFICATION</b>  I hereby certify the the information contained herein is true and complete to the best of my knowledge and belief.   Signature  Dawn M. Howard Printed Name  Operations Asst. Title  10/31/03 Date
		<b>SURVEYOR CERTIFICATION</b>  I hereby certify that the well location shown on this plat was plotted from field notes of actual surveys made by me or under my supervision, and that the same is true and correct to the best of my belief.  October 16, 2003  Date Surveyed Signature & Seal of Professional Surveyor  03.11.1139 Certificate No. GARY EDSON 12641

# VICINITY MAP



SEC. 26 TWP. 12-S RGE. 32-E

SURVEY N.M.P.M.

COUNTY LEA

DESCRIPTION 760' FNL 1980' FWL

ELEVATION 4327'

OPERATOR SOUTHWEST ROYALTIES, INC.

LEASE AFT

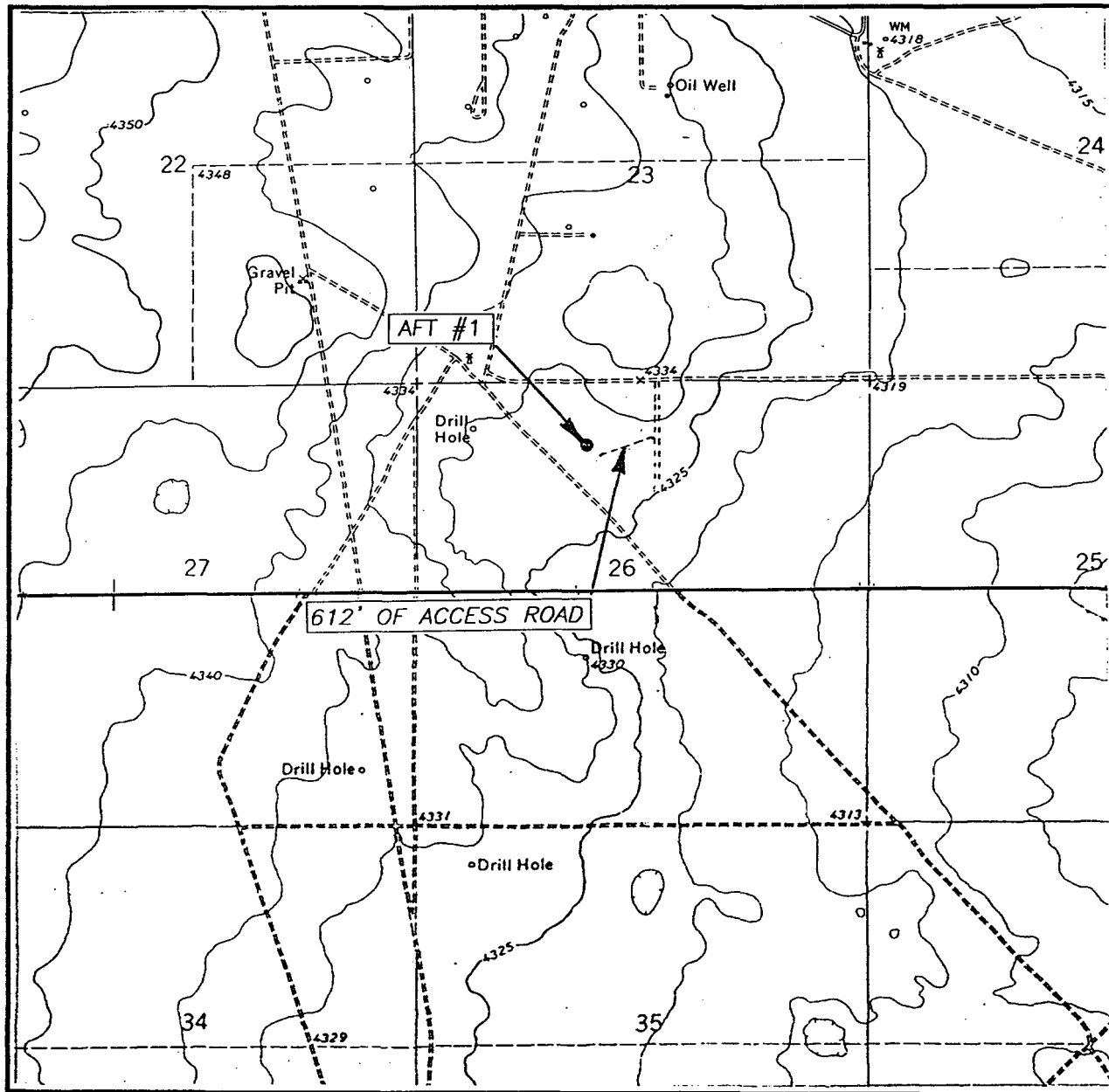
SCALE: 1" = 3.931 MILES

JOHN WEST SURVEYING  
HOBBS, NEW MEXICO  
(505) 393-3117

## DRIVING DIRECTIONS

FROM THE INTERSECTION OF U.S. HIGHWAY 380 AND U.S. HIGHWAY 457, GO NORTHWEST ALONG U.S. HIGHWAY 380 6.4 MILES TO BUTTON MESA RD. GO SOUTH ALONG BUTTON RD (PAVEMENT ENDS 4.0 MILS AND BUTTON MESA CHANGES TO MOORE RD.) 7.5 MILES PASSING A RANCH HOUSE ON THE SOUTH SIDE OF RD. GO NORTHWEST ALONG CALICHE RD. APPROXIMATELY 0.8 MILES, TURN SOUTH AND GO APPROXIMATELY 0.7 MILES, TURN EAST (ALONG SAME CALICHE RD.) AND GO APPROXIMATELY 0.3 MILES, TURN SOUTH AND GO APPROXIMATELY 0.4 MILES (ALONG SAME CALICHE RD.) LOOK WEST INTO PASTURE APPROXIMATELY 600' TO SWR AFT #1.

# LOCATION VERIFICATION MAP



SCALE: 1" = 2000'

CONTOUR INTERVAL: 5'  
SOLDIER HILL, N.M.  
COOPER-GOOD RANCH

SEC. 26 TWP. 12-S RGE. 32-E

SURVEY N.M.P.M.

COUNTY LEA

DESCRIPTION 760' FNL 1980' FWL

ELEVATION 4327'

OPERATOR SOUTHWEST ROYALTIES, INC.

LEASE AFT

U.S.G.S. TOPOGRAPHIC MAP  
SOLDIER HILL & COOPER-GOOD RANCH, N.M.,

JOHN WEST SURVEYING  
HOBBS, NEW MEXICO  
(505) 393-3117