

ATTACHMENT

State of New Mexico

Energy, Minerals and Natural Resources Department

Form C-103
Revised March 25, 1999

DISTRICT I
1625 N. French Dr., Hobbs, NM 88240
DISTRICT II
811 South First, Artesia NM 88210
DISTRICT III
1000 Rio Brazos Rd., Aztec, NM 87410
DISTRICT IV
2040 South Pacheco, Sante Fe, NM 87505

OIL CONSERVATION DIVISION

P.O. Box 2088
Santa Fe, New Mexico 87504-2088

WELL API NO.
30-025-20320

5. Indicate Type of Lease

STATE ☒ FEE ☐

6. State Oil & Gas Lease No.
8055

7. Lease Name or Unit Agreement Name

North Vacuum Abo Unit

8. Well No.
98

9. Pool name or Wildcat
Vacuum;Abo, North

SUNDRY NOTICES AND REPORTS ON WELLS
(DO NOT USE THIS FORM FOR PROPOSALS TO DRILL OR TO DEEPEN OR PLUG BACK TO A
DIFFERENT RESERVOIR. USE "APPLICATION FOR PERMIT"
(FORM C-101) FOR SUCH PROPOSALS)

1. Type of Well:

Oil Well ☐ Gas Well ☐ Other **injector**

2. Name of Operator

Exxon Mobil Corporation

3. Address of Operator **P.O. Box 4358**
Houston

TX 77210-4358

4. Well Location

Unit Letter **J** : **1780** Feet From The **east** Line and **1980** Feet From The **south** Line

Section **26** Township **17S** Range **34S** NMPH **Lea** County

10. Elevation (Show whether DR, RKB, RT, GR, etc.)
KB 4032'

Additional Remarks

10-13-03 Drive crew to location. Hold safety meeting. Inspect rig. Check H2S monitor. Casing on vacuum with no pressure on tubing. Pressure up on casing to 500 PSI. It leaked off to 250 PSI in 8 minutes. Rel On-Off tool. POOH with tubing & L-316 Stuck. Tally in-hole with 43A & tubing to find casing leak. Found leak from 4461' to 4492'. Leaked 1000 PSI to 600 PSI in 5 minutes. CWI & SDFN

10-14-03 Drive crew to location. Hold safety meeting. Inspect rig. Check H2S monitor. Unset packer & POOH with packer. TIH with 43A Baker Model "G" RTBP, set @ 4700' with 118 Jts & 9' Out. Drop 1 sack of sand on top of RTBP. TIH open ended with 147 Jts tubing. End of tubing @ 4518'. CWI & SDFN

10-15-03 Drive crew to location. Hold safety meeting. Inspect rig. Check H2S monitor. RU Cementer & Spot 6 bbls of cement @ 4918'. POOH with 5 stands & reverse out 2 bbls. Lay down 4 Jts. PU to 1500 PSI. CWI. RD Cementer. SDFN

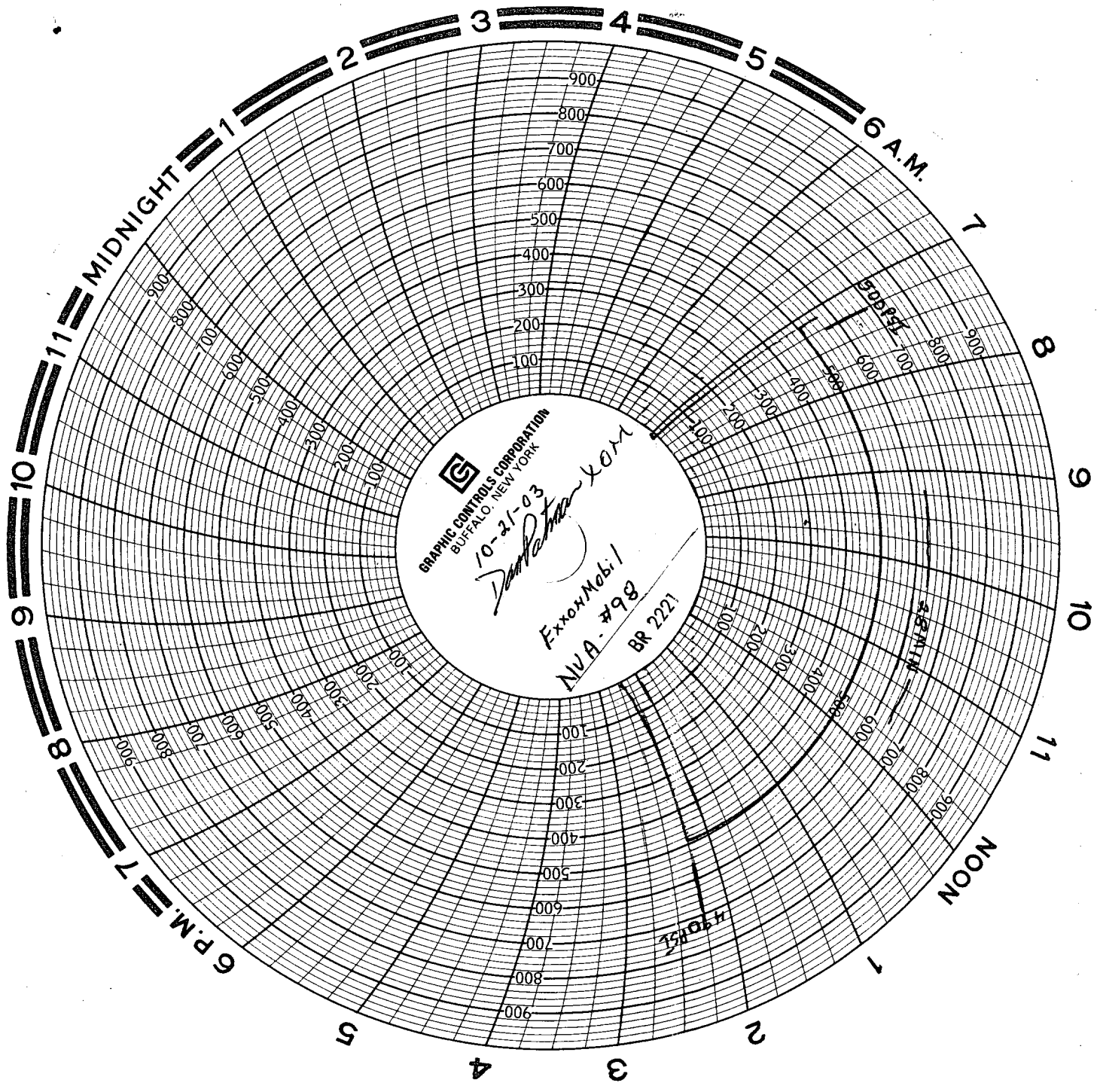
10-16-03 Drive crew to location. Hold safety meeting. Inspect rig. Check H2S monitor. Check pressure on well, 1500 PSI on casing. Bleed down & POOH with tubing. PU drill collars. RIH with bit, collars, & tubing. Tagged cement @ 4280'. RU Rev Unit & Power Swivel. DO to 4361'. Cement too green. LD Power Swivel. CWI & SDFN

10-17-03 Drive crew to location. Hold safety meeting. Inspect rig. Check H2S monitor. RU Power Swivel. Drill out cement. PU on casing to 550 PSI. Run 30 minute chart, held OK. RD Power Swivel. POOH with tubing & LD DC's. RIH with RTBP & Ret Head. Circulate sand out. Latch on to RTBP. POOH with tubing & RTBP. RIH with kill string. CWI & SDFWE

10-20-03 Drive crew to location. Hold safety meeting. Inspect rig. Check H2S monitor. Open well. RIH with tubing. RU Vac Truck. RU Rev Unit & Circ Pkr Fluid. ND BOP. Flange Up well head. Ran 30 minute chart, held good. RD WSU Clean location. MO WSU

Otis retrievable packer set at 8357'.

10-21-03 Ran official MIT chart at 8:00 am. No state representative present to witness test. Copy of chart attached.



GRAPHIC CONTROLS CORPORATION
BUFFALO, NEW YORK
10-21-03
Dan Patten
ExxonMobil
NVA-#98
BR 2221

1500 ft