

Submit 3 Copies To Appropriate District

Office

District I

1625 N. French Dr., Hobbs, NM 88240

District II

1301 W. Grand Avenue, Artesia, NM 88210

District III

1000 Rio Brazos Rd., Aztec, NM 87410

District IV

1220 S. St. Francis Dr., Santa Fe, NM 87505

State of New Mexico  
Energy, Minerals and Natural Resources

OIL CONSERVATION DIVISION  
1220 South St. Francis Dr.  
Santa Fe, NM 87505

Form C-103

Revised March 25, 1999

WELL API NO.

30-025-06310

5. Indicate Type of Lease

STATE ☒ FEE ☐

6. State Oil & Gas Lease No.

7. Lease Name or Unit Agreement Name:

Eunice Monument South Unit

8. Well No.

159

9. Pool name or Wildcat

Eunice Monument Grayburg SA

SUNDRY NOTICES AND REPORTS ON WELLS

(DO NOT USE THIS FORM FOR PROPOSALS TO DRILL OR TO DEEPEN OR PLUG BACK TO A DIFFERENT RESERVOIR. USE "APPLICATION FOR PERMIT" (FORM C-101) FOR SUCH PROPOSALS.)

1. Type of Well:

Oil Well ☒ Gas Well ☐ Other

2. Name of Operator

Chevron USA Inc

3. Address of Operator

15 Smith Rd, Midland, TX, 79705

4. Well Location

Unit Letter J : 1980 feet from the South line and 1980 feet from the East line

Section 31 Township 20-S Range 37-E NMPM Lea County

10. Elevation (Show whether DR, RKB, RT, GR, etc.)

11. Check Appropriate Box to Indicate Nature of Notice, Report or Other Data

NOTICE OF INTENTION TO:

PERFORM REMEDIAL WORK ☐ PLUG AND ABANDON ☒

TEMPORARILY ABANDON ☐ CHANGE PLANS ☐

PULL OR ALTER CASING ☐ MULTIPLE COMPLETION ☐

OTHER: ☐

SUBSEQUENT REPORT OF:

REMEDIAL WORK ☐ ALTERING CASING ☐

COMMENCE DRILLING OPNS. ☐ PLUG AND ABANDONMENT ☐

CASING TEST AND CEMENT JOB ☐

OTHER: ☐

12. Describe proposed or completed operations. (Clearly state all pertinent details, and give pertinent dates, including estimated date of starting any proposed work). SEE RULE 1103. For Multiple Completions: Attach wellbore diagram of proposed completion or recompilation.

1. Notify OCD 24 hrs prior to MI and RU.
2. Set 7" CIBP at 3550, spot 25sx, plug 3550-3400 (Grayburg - SA) WOC Tag.
3. Displace hole w/MLF, 9.5# Brine w/25# gel P/BBL.
4. Spot 35sx, plug 2700-2500 (Yates, B-Salt) WOC Tag.
5. Perf 4 holes at 1200, sqz 75sx, plug 1200-1000 (9 5/8 Shoe, T-Salt) WOC Tag.
6. Perf 4 holes at 300, sqz 90sx, plug 300-Surf, 7" x 9 5/8" (13" Shoe, Surf) WOC Tag.
7. Install dry hole marker.

THE COMMISSION MUST BE NOTIFIED 24 HOURS PRIOR TO THE BEGINNING OF PLUGGING OPERATIONS FOR THE C-103 TO BE APPROVED.



I hereby certify that the information above is true and complete to the best of my knowledge and belief.

SIGNATURE G.R. Bledsoe TITLE HES Specialist

DATE 11/3/2003

Type or print name G.R. Bledsoe

Telephone No. (432) 687-7153

(This space for State use)

APPROVED BY Mary W. Winkler TITLE FIELD REPRESENTATIVE II / STAFF MANAGER

Conditions of approval, if any:

DATE NOV 12 2003

# PLUGGING & ABANDONMENT WORKSHEET

(3 STRING CSNG)

OPERATOR CHEVRON USA INC.

LEASE NAME EDWIGE MONUMENT SOUTH UNIT

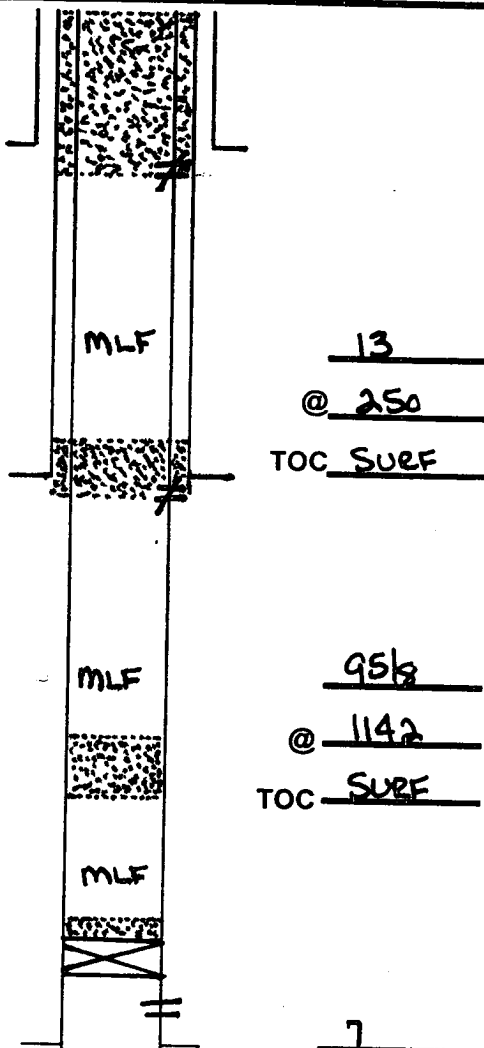
WELL # 159

SECT 31 TWN 20-S RNG 37-E

FROM 1980 N SL 1980 EWL EWL

TD 3868 FORMATION @ TD GRAYBURG

PBTD                      FORMATION @ PBTD SA



MLF 13

@ 250

TOC SURF

MLF 95 1/2

@ 1142

TOC SURF

MLF 7

@ 3740

TOC 2050

TD 3868

	SIZE	SET @	TOC	TOC DETERMINED BY
SURFACE	13	250	SURF	Circ
INTMED 1	95 1/2	1142	SURF	Circ.
INTMED 2				
PROD	7	3740	2050	CALC.

	SIZE	TOP	BOT	TOC	DETERMINED BY
LINER 1					
LINER 2					

	CUT & PULL	TOP - BOTTOM
INTMED 1	PERFS	3612 - 3700
INTMED 2	OPENHOLE	
PROD		

\*REQUIRED PLUGS DISTRICT

	PLUG	TYPE PLUG	SACKS CEMENT	DEPTH
RUSTLER (ANHYD)	1	CLBP	25	3550
YATES	2	B-SALT	35	2700
QUEEN	3	95 1/2 S	75	1200
GRAYBURG	4	13 S	90	300
SAN ANDRES				
CAPTAN REEF				
DELAWARE				
BELL CANYON				
CHERRY CANYON				
BRUSHY CANYON				
BONE SPRING				
GLORIETA				
BLINBRY				
TUBB				
DRINKARD				
ABO				
WC				
PENN				
STRAWN				
ATOKA				
MORROW				
MISS				
DEVONIAN				