

State of New Mexico

Energy, Minerals and Natural Resources Department

DISTRICT I

1625 N. FRENCH DR., HOBBS, NM 88240

DISTRICT II

1301 W. GRAND AVENUE, ARTESIA, NM 88210

DISTRICT III

1000 Rio Brazos Rd., Aztec, NM 87410

DISTRICT IV

1220 S. ST. FRANCIS DR., SANTA FE, NM 87505

OIL CONSERVATION DIVISION
1220 SOUTH ST. FRANCIS DR.
Santa Fe, New Mexico 87505

RECEIVED

HOBBS OGD

Form C-102

Revised October 12, 2005

Submit to Appropriate District Office

State Lease - 4 Copies

Fee Lease - 3 Copies

WELL LOCATION AND ACREAGE DEDICATION PLAT

☐ AMENDED REPORT

API Number 30-025-39095	Pool Code 19190	Pool Name Drinkard
Property Code 2606	Property Name CENTRAL DRINKARD UNIT	Well Number 436
OGRID No. 4323	Operator Name CHEVRON U.S.A. INC.	Elevation 3489'

Surface Location

UL or lot No.	Section	Township	Range	Lot Idn	Feet from the	North/South line	Feet from the	East/West line	County
D	29	21-S	37-E		660	NORTH	1010	WEST	LEA

Bottom Hole Location If Different From Surface

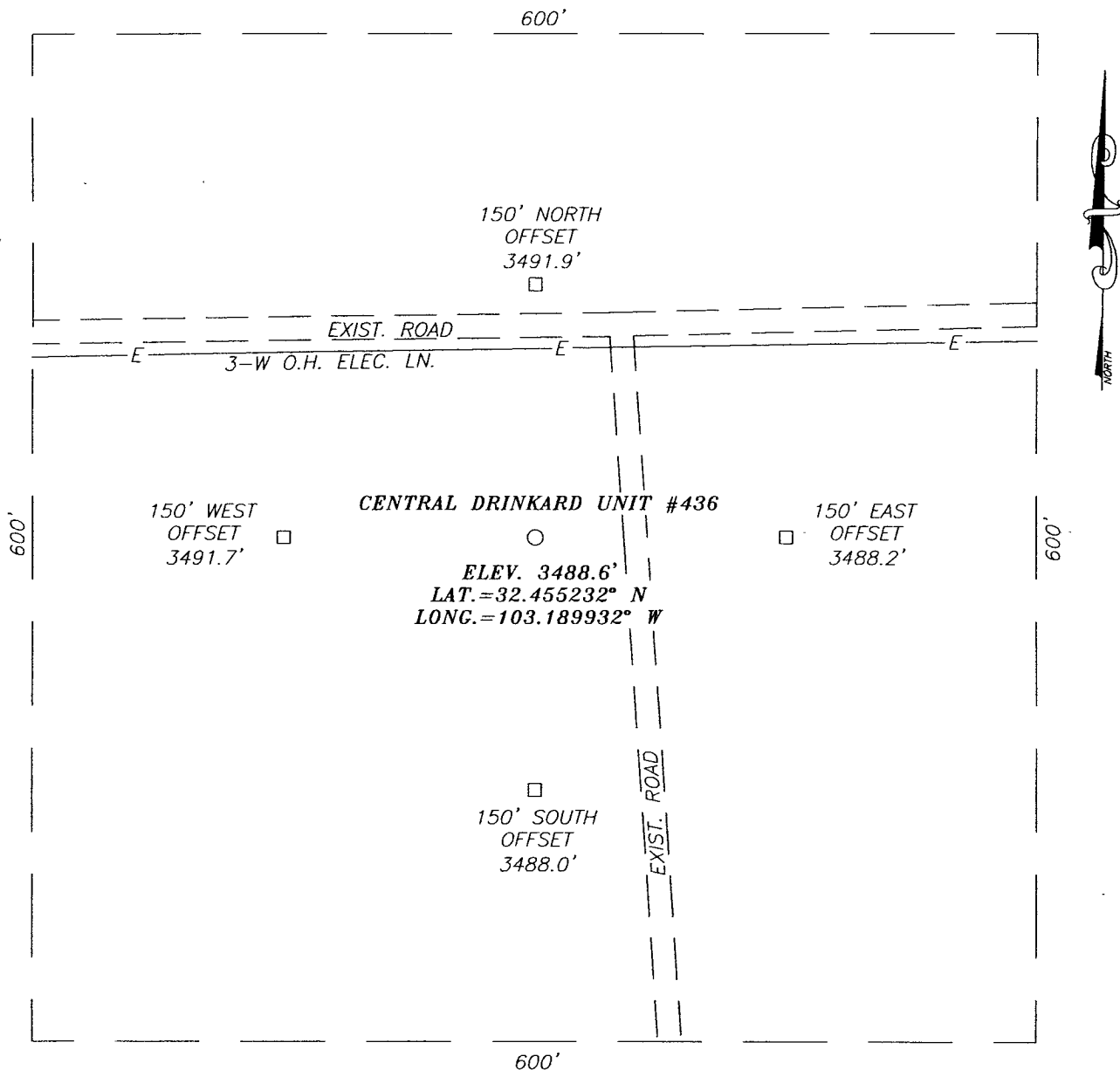
UL or lot No.	Section	Township	Range	Lot Idn	Feet from the	North/South line	Feet from the	East/West line	County

Dedicated Acres 40	Joint or Infill	Consolidation Code	Order No.
------------------------------	-----------------	--------------------	-----------

NO ALLOWABLE WILL BE ASSIGNED TO THIS COMPLETION UNTIL ALL INTERESTS HAVE BEEN CONSOLIDATED
OR A NON-STANDARD UNIT HAS BEEN APPROVED BY THE DIVISION

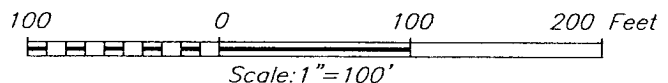
	<p>GEODETIC COORDINATES NAD 27 NME</p> <p>Y=531215.5 N X=852695.9 E</p> <p>LAT.=32.455232° N LONG.=103.189932° W</p>	<p>OPERATOR CERTIFICATION</p> <p>I hereby certify that the information herein is true and complete to the best of my knowledge and belief, and that this organization either owns a working interest or unleased mineral interest in the land including the proposed bottom hole location or has a right to drill this well at this location pursuant to a contract with an owner of such mineral or working interest, or to a voluntary pooling agreement or a compulsory pooling order heretofore entered by the division.</p> <p>Signature: <i>Denise Pinkerton</i> Date: 8-14-08</p> <p>Printed Name: Denise Pinkerton</p>
		<p>SURVEYOR CERTIFICATION</p> <p>I hereby certify that the well location shown on this plat was plotted from field notes of actual surveys made by me or under my supervision, and that the same is true and correct to the best of my belief.</p>
		<p>Date Surveyed: 8/14/08</p> <p>Signature & Seal of Professional Surveyor: <i>Ronald J. Eidson</i> 3239</p>
		<p>Certificate No. GARY EIDSON 12641 RONALD EIDSON 3239</p>

SECTION 29, TOWNSHIP 21 SOUTH, RANGE 37 EAST, N.M.P.M.,
 LEA COUNTY, NEW MEXICO



DIRECTIONS TO LOCATION

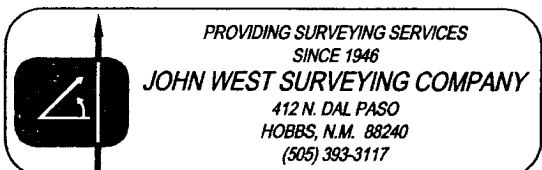
FROM THE INTERSECTION OF ST. HWY. #8-176
 ADN CO. RD. C-33 (N. TURNER), GO NORTH ON
 CO. RD. C-33 APPROX. 0.5 MILES. TURN LEFT
 AND GO WEST APPROX. 0.7 MILES. TURN RIGHT
 AND GO NORTH APPROX. 0.25 MILES. THIS
 LOCATION IS APPROX. 50 FEET WEST.



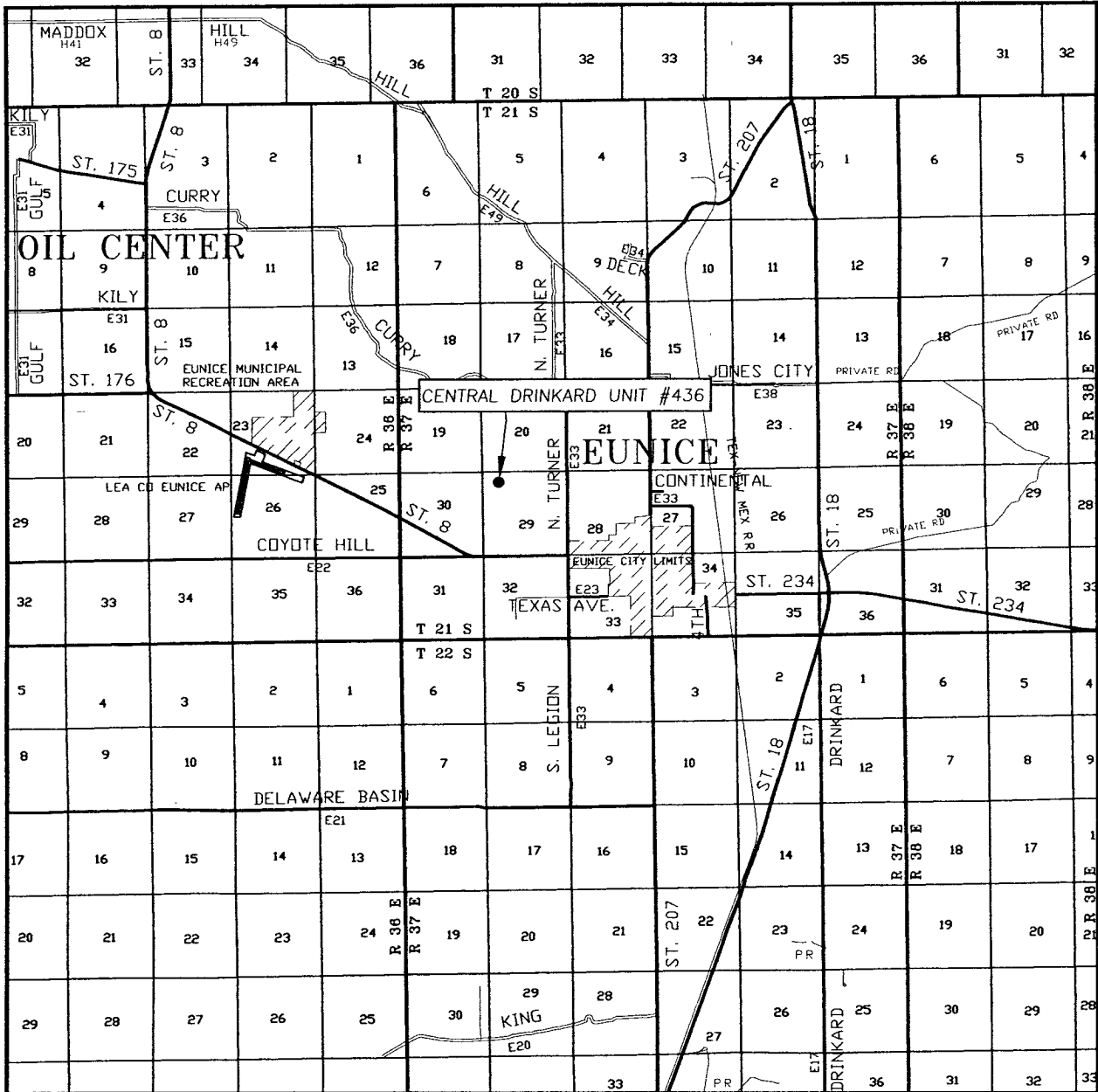
CHEVRON U.S.A. INC.

CENTRAL DRINKARD UNIT #436 WELL
 LOCATED 660 FEET FROM THE NORTH LINE
 AND 1010 FEET FROM THE WEST LINE OF SECTION 29,
 TOWNSHIP 21 SOUTH, RANGE 37 EAST, N.M.P.M.,
 LEA COUNTY, NEW MEXICO.

Survey Date: 8/27/07	Sheet 1 of 1 Sheets
W.O. Number: 07.11.1056	Dr By: LA
Date: 9/12/07	Disk: CD#6
07111056	Scale: 1"=100'



VICINITY MAP



SCALE: 1" = 2 MILES

SEC. 29 TWP. 21-S RGE. 37-E

SURVEY N.M.P.M.

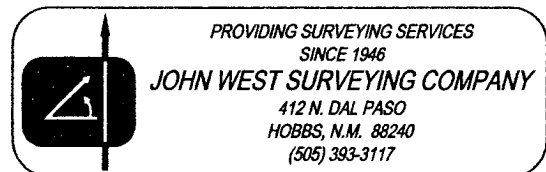
COUNTY LEA STATE NEW MEXICO

DESCRIPTION 660' FNL & 1010' FWL

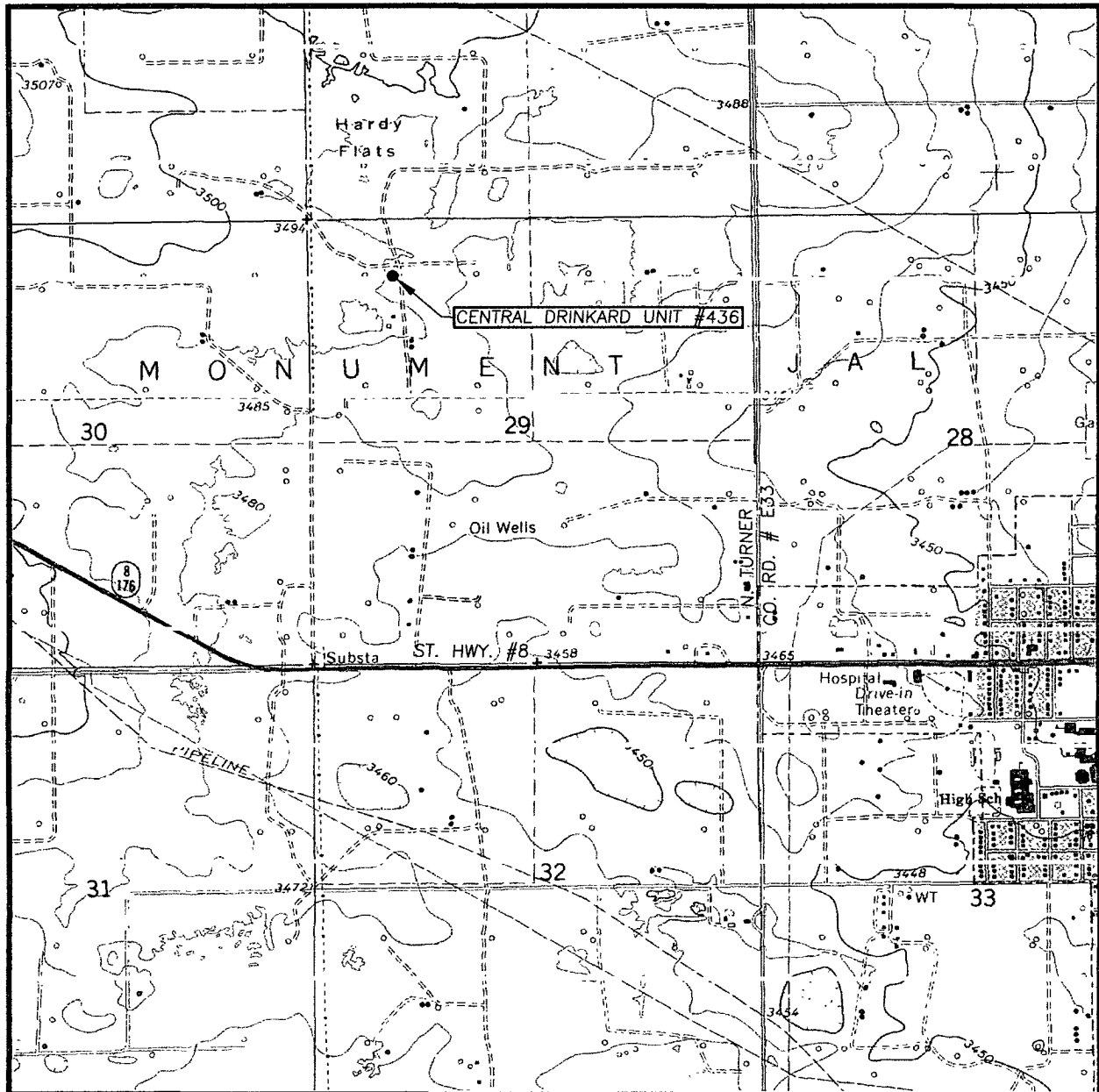
ELEVATION 3489'

OPERATOR CHEVRON U.S.A. INC.

LEASE CENTRAL DRINKARD UNIT



LOCATION VERIFICATION MAP



SCALE: 1" = 2000'

CONTOUR INTERVAL:
EUNICE, N.M. - 10'

SEC. 29 TWP. 21-S RGE. 37-E

SURVEY _____ N.M.P.M.

COUNTY LEA STATE NEW MEXICO

DESCRIPTION 660' FSL & 1010' FWL

ELEVATION 3489'

OPERATOR CHEVRON U.S.A. INC.

LEASE CENTRAL DRINKARD UNIT

U.S.G.S. TOPOGRAPHIC MAP
EUNICE, N.M.

