

DISTRICT I

1625 N. FRENCH DR., HOBBBS, NM 87248

State of New Mexico

Energy, Minerals and Natural Resources Department

Form C-102

Revised October 12, 2005

Submit to Appropriate District Office

State Lease - 4 Copies

Fee Lease - 3 Copies

DISTRICT II

1301 W. GRAND AVENUE, ARTESIA, NM 88210

OIL CONSERVATION DIVISION

1220 SOUTH ST. FRANCIS DR.

Santa Fe, New Mexico 87505

DISTRICT III

1000 Rio Brazos Rd., Artesia, NM 88210

DISTRICT IV

1220 S. ST. FRANCIS DR., SANTA FE, NM 87505

WELL LOCATION AND ACREAGE DEDICATION PLAT

☐ AMENDED REPORT

API Number 30-025-39097	Pool Code 19190	Pool Name Drunkard
Property Code 2606	Property Name Central Drunkard Unit	Well Number 438
OGRID No. 4323	Operator Name CHEVRON USA INC.	Elevation 3475'

Surface Location

UL or lot No.	Section	Township	Range	Lot Idn	Feet from the	North/South line	Feet from the	East/West line	County
A	29	21-S	37-E		1235	NORTH	790	EAST	LEA

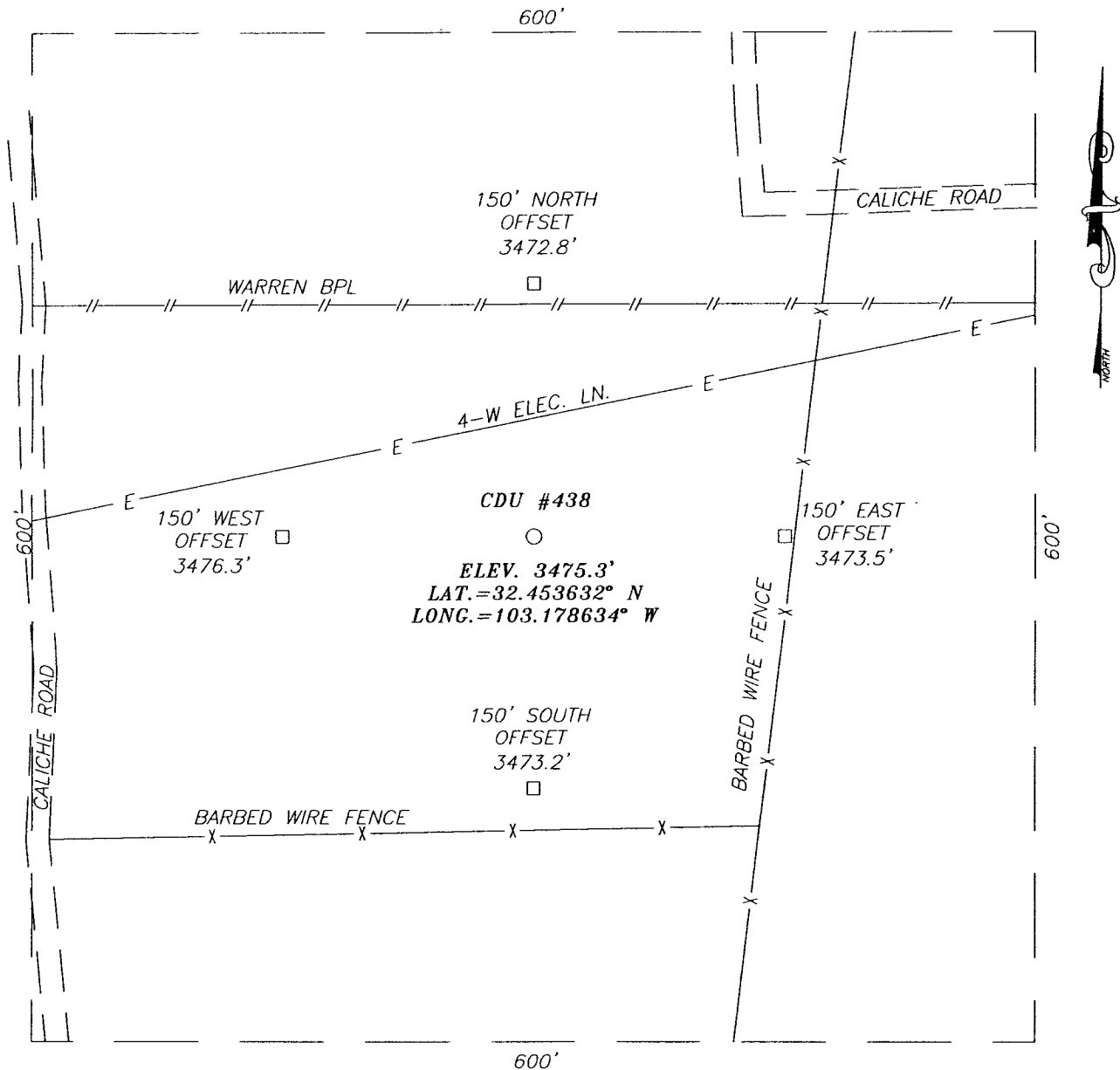
Bottom Hole Location If Different From Surface

UL or lot No.	Section	Township	Range	Lot Idn	Feet from the	North/South line	Feet from the	East/West line	County
Dedicated Acres 40	Joint or Infill	Consolidation Code	Order No.						

NO ALLOWABLE WILL BE ASSIGNED TO THIS COMPLETION UNTIL ALL INTERESTS HAVE BEEN CONSOLIDATED
OR A NON-STANDARD UNIT HAS BEEN APPROVED BY THE DIVISION

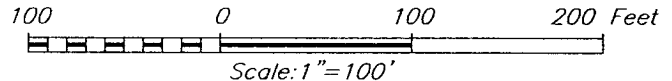
<p>GEODETIC COORDINATES NAD 27 NME</p> <p>Y=530670.9 N X=856187.6 E</p> <p>LAT.=32.453632° N LONG.=103.178634° W</p>	<p>OPERATOR CERTIFICATION</p> <p>I hereby certify that the information herein is true and complete to the best of my knowledge and belief, and that this organization either owns a working interest or unleased mineral interest in the land including the proposed bottom hole location or has a right to drill this well at this location pursuant to a contract with an owner of such mineral or working interest, or to a voluntary pooling agreement or a compulsory pooling order heretofore entered by the division.</p> <p><i>Denise Pinkerton</i> 8-19-08 Signature Date DENISE PINKERTON Printed Name</p>
	<p>SURVEYOR CERTIFICATION</p> <p>I hereby certify that the well location shown on this plat was plotted from field notes of actual surveys made by me or under my supervision, and that the same is true and correct to the best of my belief.</p>
	<p>SEAL OF PROFESSIONAL SURVEYOR</p> <p>RONALD J. EIDSON JULY 21, 2008 LA 3239 8/30/08</p>
	<p>Certificate No. RONALD EIDSON 3239</p>

SECTION 29, TOWNSHIP 21 SOUTH, RANGE 37 EAST, N.M.P.M.,
LEA COUNTY, NEW MEXICO



DIRECTIONS TO LOCATION

FROM INTERSECTION ST. HWY. #8 AND CO. RD. #E33 (TURNER), GO NORTH ON CO. RD. #E33 APPROX. 0.7 MILES. TURN LEFT AND GO WEST APPROX. 0.2 MILES. TURN RIGHT AND GO NORTH APPROX. 0.06 MILES. THIS LOCATION IS APPROX. 300 FEET EAST.


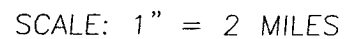


CHEVRON USA INC.

CDU #438 WELL
LOCATED 1235 FEET FROM THE NORTH LINE
AND 790 FEET FROM THE EAST LINE OF SECTION 29,
TOWNSHIP 21 SOUTH, RANGE 37 EAST, N.M.P.M.,
LEA COUNTY, NEW MEXICO.

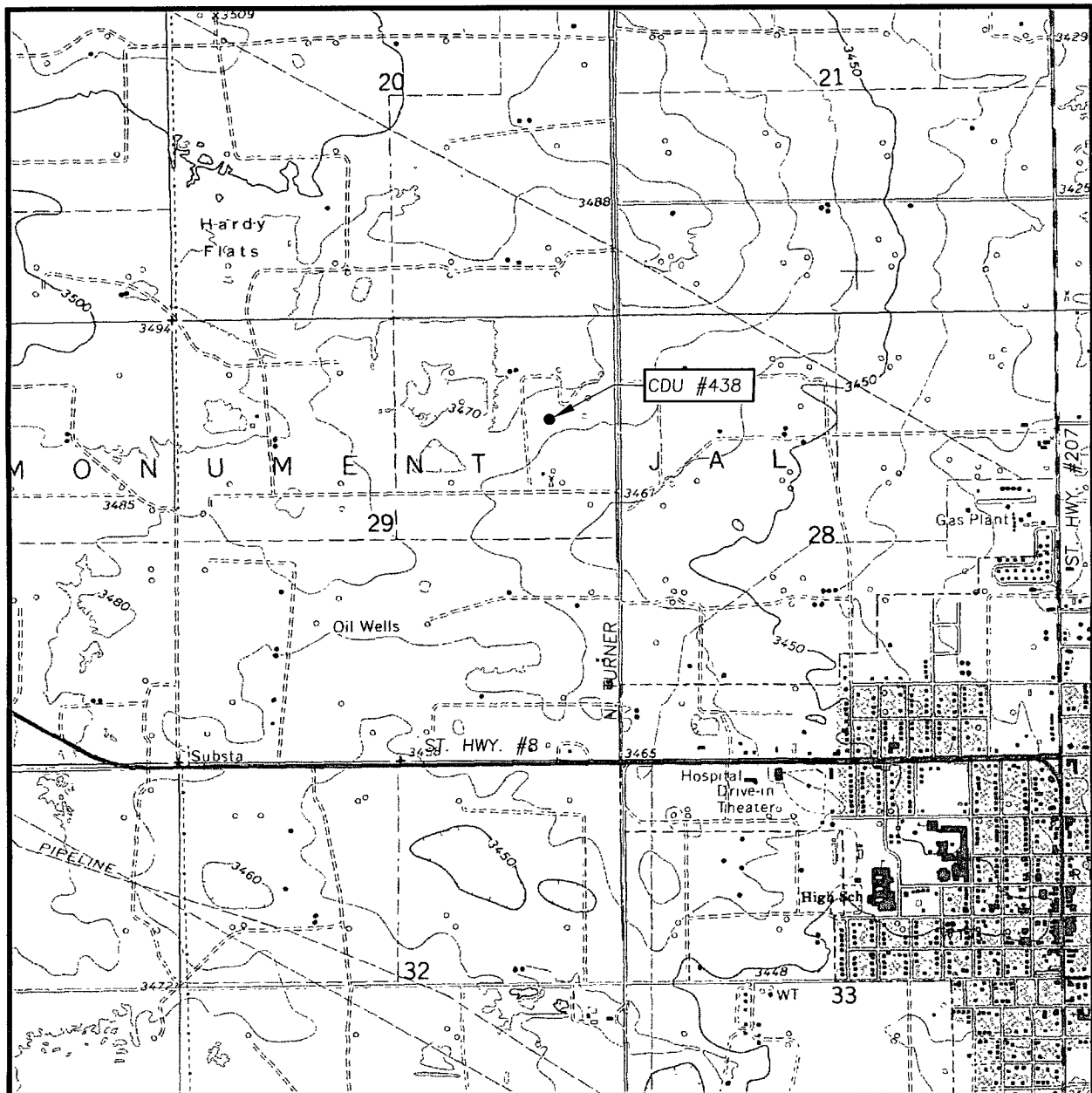
Survey Date: 7/21/08	Sheet 1 of 1 Sheets
W.O. Number: 08.11.1133	Dr By: LA
Date: 7/29/08	08111133
	Scale: 1"=100'

PROVIDING SURVEYING SERVICES
SINCE 1946
JOHN WEST SURVEYING COMPANY
412 N. DAL PASO
HOBBS, N.M. 88240
(505) 393-3117



PROVIDING SURVEYING SERVICES
SINCE 1946
JOHN WEST SURVEYING COMPANY
412 N. DAL PASO
HOBBS, N.M. 88240
(505) 393-3117

LOCATION VERIFICATION MAP



SCALE: 1" = 2000'

CONTOUR INTERVAL:
EUNICE, N.M. - 10'

SEC. 29 TWP. 21-S RGE. 37-E

SURVEY N.M.P.M.

COUNTY LEA STATE NEW MEXICO

DESCRIPTION 1235' FNL & 790' FEL

ELEVATION 3475'

OPERATOR CHEVRON USA INC.

LEASE CDU

U.S.G.S. TOPOGRAPHIC MAP
EUNICE, N.M.



PROVIDING SURVEYING SERVICES
SINCE 1946
JOHN WEST SURVEYING COMPANY
412 N. DAL PASO
HOBBS, N.M. 88240
(505) 393-3117