

State of New Mexico
Energy, Minerals and Natural Resources

RECEIVED

PERMIT DIVISION
1220 South St. Francis Dr.
Santa Fe, NM 87505

AUG 27 2009

HOBBS OFFICE

SUNDRY NON-PRODUCING REPORTS ON WELLS
(DO NOT USE THIS FORM FOR PROPOSALS TO DRILL OR REOPEN OR PLUG BACK TO A
DIFFERENT RESERVOIR USE "APPLICATION FOR PERMIT" (FORM C-101) FOR SUCH
PROPOSALS)1. Type of Well: Oil Well ☐ Gas Well ☐ Other - SWD2. Name of Operator
Fasken Oil and Ranch, Ltd.3. Address of Operator
303 W. Wall, Suite 1800, Midland, TX 79701

4. Well Location

Unit Letter L : 1980 feet from the South line and 560 feet from the West line
Section 7 Township 15-S Range 35E NMPM County Lea11. Elevation (Show whether DR, RKB, RT, GR, etc.)
4053' KBPit or Below-grade Tank Application ☐ or Closure ☐

Pit type _____ Depth to Groundwater _____ Distance from nearest fresh water well _____ Distance from nearest surface water _____

Pit Liner Thickness: _____ mil Below-Grade Tank: Volume _____ bbls; Construction Material _____

12. Check Appropriate Box to Indicate Nature of Notice, Report or Other Data

NOTICE OF INTENTION TO:

PERFORM REMEDIAL WORK ☐ PLUG AND ABANDON ☐
TEMPORARILY ABANDON ☐ CHANGE PLANS ☐
PULL OR ALTER CASING ☐ MULTIPLE COMPL ☐OTHER: ☐

SUBSEQUENT REPORT OF:

REMEDIAL WORK ☒ ALTERING CASING ☐
COMMENCE DRILLING OPNS. ☐ P AND A ☐
CASING/CEMENT JOB ☐OTHER: ☐

13. Describe proposed or completed operations. (Clearly state all pertinent details, and give pertinent dates, including estimated date of starting any proposed work). SEE RULE 1103. For Multiple Completions: Attach wellbore diagram of proposed completion or recompletion.

07/22- 07/26/08 Notified NMOCDD Hobbs office (Mr. Buddy Hill @ 4:39 pm) of intent to begin work. RUPU. NDWH and NU BOP and attempted to release pkr. RUWL. Picked up on pipe and pipe was not free. Contractor set frac tank on location for drilling mud. Contractor hauled 500 bbls 11ppg calcium carbonate base mud from J-B Fluids to frac tank. RU reverse unit to circulate mud. RUWL and RIW with tubing punch gun and tagged @ 5486' FS. Perforated tbg at 5469'-5470' w/4 holes POW and RDWL and well would not equalize through tubing holes. Surged casing while leaving tubing shut in and after several attempts tubing and casing equalized. Reverse pump rolled mud tank. Checked and found mud weight to be 11.2# ppg. NU adjustable ck on tbg and established circulation down csg @ 1.5 bpm rate w/ 1.3 bpm rate on returns up tubing and to test tank. Pump pressure at 450 psi w/ 35 bbls pumped and casing pressure increased to 600 psi. Installed larger choke and could not get pressure to decrease on 3/4" ck, pressure did not decrease and stopped pumping. Casing holding 590 psi. RIW and set 1.78" "F" profile plug @ 5585' FS in blanking nipple. POW and LD setting tool and RD SL unit. Established circulation down tubing and out tbg/casing annulus 3 bpm @ 350 psi and pumped 15 bpw.

See Attachment

I hereby certify that the information above is true and complete to the best of my knowledge and belief. I further certify that any pit or below-grade tank has been/will be constructed or closed according to NMOCDD guidelines ☐, a general permit ☐ or an (attached) alternative OCD-approved plan ☐.SIGNATURE Gloria Holcomb TITLE Engineering Tech. DATE 08/19/08

Type or print name Gloria Holcomb

E-mail address: gloriah@forl.com

Telephone No. (432) 687-1777

For State Use Only

APPROVED BY:

Conditions of Approval (if any):

OC FIELD REPRESENTATIVE II/STAFF MANAGER
TITLE _____ DATE _____

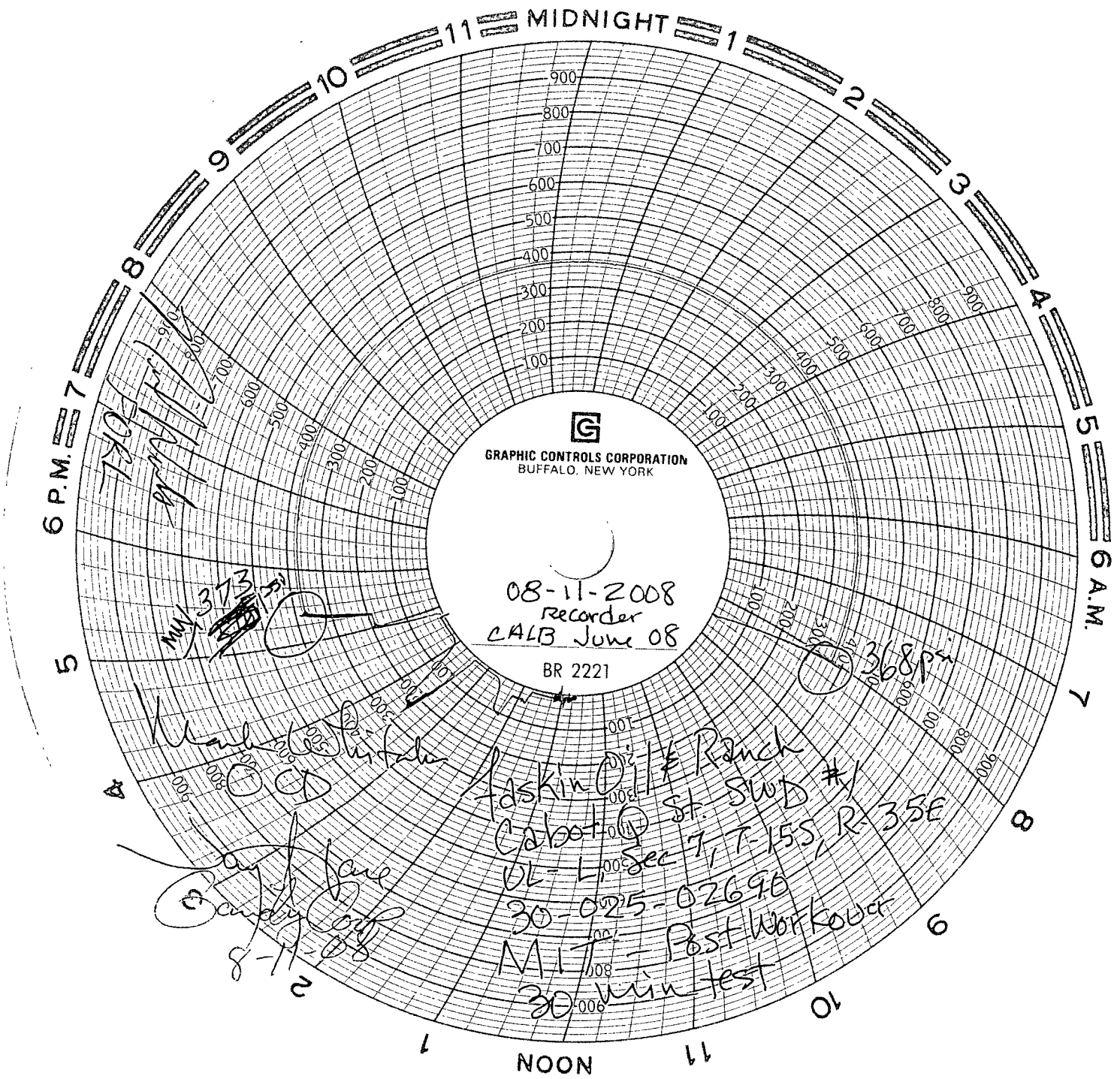
AUG 28 2008

7/29-7/31/08 Started displacing well w/ mud and could not keep good suction on pump. Hooked up 3" charger pump and finished displacing well with total of 331 bbls mud w/ well balanced. Had 10.7 ppg mud returns. RU slickline unit and equalized and retrieved 1.78" "F" blanking plug from profile nipple @ 5485'. POW and RD slick line unit. RU tubing swivel and attempted to release packer and could not find any free movement in TOSSD or packer. RUWL and RIW to free point tubing. Worked packer and started losing torque through tubing and continued to work rotation through tubing. POW with free point tools and worked rotation through tubing for 1 hr and released pkr. Packer drug for 60'. RIW with pkr 10' past set point and RDWL. POW w/ 167 jts 2-7/8" IPC tbg, TOSSD, Baker down hole shut off valve and 5-1/2" Lock Set pkr while inspecting pin and box ends for any plastics damage. RIW with 4-5/8" used bit, 5-1/2" casing scraper, X-O, and 115 jts 2-7/8 EUE 8rd N-80 work string. Left tools swinging at 3976' FS. Back filled well with 15 bbls 11.0 ppg mud while POW during day. Finished RIW with bit and scraper and had no trouble getting in liner. Reciprocated scraper through area 5107' - 5139' with no drag and continued RIW and started reciprocating scraper from 5525' to 5680' with some resistance and bit set down hard at 5680'. Worked to 5700' and set down solid and could not work any farther. POW with 30 jts 2-7/8" WS and started pulling wet; pressured up on tubing to 1800 psi and could not knock out plug. RUWL and RIW with 6 shot tubing punch gun and shot 15' above scraper and could pump through but would not drain. RIW and shot 6 addition holes with tubing punch gun and tubing went on vacuum. POW w/ WL and finished POW with tubing and scraper. Found bottom jt of tubing and BHA plugged with scale and iron sulfide and also found first set of holes did not fully penetrate tubing. LD 1 jt of tubing and scraper.

8/2/08 RIW w/ 4"x 2-7/8" perforated sub, 5-1/2" x 2-3/8" BJ HD compression pkr, 2-7/8" seating nipple on 2-7/8" WS and had trouble working in liner @ 4075'; set pkr at 5204' and loaded annulus with 60 bbls 10 ppg brine wtr. Pressure tested casing above 5204' to surface at 550 psi for 40" with no pressure loss on chart. Bled down pressure and pumped 12 bbls of 11.2 ppg mud down tubing on vacuum. Release pkr and POW with WS and pkr and RIW with bull plugged perf sub, seating nipple and 50 jts WS to 1590'.

8/5-8/11/08 RIW w/ remainder of work string and POW and LD work string while installing pin and box end thread protectors. RU reverse pit and rolled drilling mud 1.5 hrs and checked mud weight at 11.2 ppg. Set pkr at 4519', set 2-7/8" J-55 IPC tubing @ 4528.60'. RU slickline and RIW and set 1.78" "F" blanking plug at 4528' FS. Tested tubing at 1000 psi ok. Disengaged TOSSD and tested packer at 600 psi w/ no pressure loss. Reverse circulated 330 bbls 2% Kcl water containing 3 drums of Endura CI-811 and 15 gals of Endura Scav-10 to test tank and trucks emptied test tank and reverse pit. Engaged TOSSD, ND BOP and NUWH. RIW and retrieved blanking plug. RU pump truck on csg. tbg. annulus and pressured to 373 psi for 35". Mark Whitaker with the NMOCD approved the test. RU Petroplex, pumped 5,000 gals. 15% HCL acid w/5% Petrosol and flushed with 61.5 bbls fresh water mixed w/10 gals of emulsion chemical. ISDP 330psi; 5" 303 psi; 10" 297 psi; 15" 290 psi; MTP- 910 psi; ATP- 828 psi @ 5 bpm. RD Petroplex and PU. Returned well to salt water disposal.

See Chart Attached



G
GRAPHIC CONTROLS CORPORATION
BUFFALO, NEW YORK

08-11-2008
Recorder
CALB June 08
BR 2221

Faskin Ranch
Cabot St. SWD #1
UL- L, Sec 7, T-15S, R-35E
30-025-02696
MIT - Post Workover
30 min test

373

368 p.m.

8-11-08