

District I
1625 N. French Dr., Hobbs, NM 88240
District II
1301 W. Grand Avenue, Artesia, NM 88210
District III
1000 Rio Brazos Road, Aztec, NM 87410
District IV
1220 S. St. Francis Dr., Santa Fe, NM 87505

State of New Mexico
Energy Minerals and Natural Resources

Form C-101
June 16, 2008

Oil Conservation Division
1220 South St. Francis Dr.
Santa Fe, NM 87505

Submit to appropriate District Office

☐ AMENDED REPORT

APPLICATION FOR PERMIT TO DRILL, RE-ENTER, DEEPEN, PLUGBACK, OR ADD A ZONE

¹ Operator Name and Address VANGUARD PERMIAN, LLC. 1209 SOUTH MAIN LOVINGTON, NEW MEXICO 8860		² OGRID Number 258350
		³ API Number 30 - 025 - 39106
⁴ Property Code 305160	⁵ Property Name STATE SECTION "1-LA"	⁶ Well No. 21
⁹ Proposed Pool 1 LOVINGTON-DRINKARD (40490)		¹⁰ Proposed Pool 2

⁷ Surface Location

UL or lot no.	Section	Township	Range	Lot Idn	Feet from the	North/South line	Feet from the	East/West line	County
Lot 2	1	17S	36E		490'	NORTH	1650'	EAST	LEA

⁸ Proposed Bottom Hole Location If Different From Surface

UL or lot no.	Section	Township	Range	Lot Idn	Feet from the	North/South line	Feet from the	East/West line	County

Additional Well Information

¹¹ Work Type Code N	¹² Well Type Code O	¹³ Cable/Rotary ROTARY	¹⁴ Lease Type Code S	¹⁵ Ground Level Elevation 3830'
¹⁶ Multiple NO	¹⁷ Proposed Depth 8400'	¹⁸ Formation DRINKARD	¹⁹ Contractor UNKNOWN	²⁰ Spud Date WHEN APPROVED

²¹ Proposed Casing and Cement Program

Hole Size	Casing Size	Casing weight/foot	Setting Depth	Sacks of Cement	Estimated TOC
26"	20"	Conductor	40'	Redi-mix	Surface
17 1/2"	13 3/8"	48#	500'	350 Sx.	Surface
11"	8 5/8"	32#	4500'	1015 Sx.	Surface
7 7/8"	4 1/2"	11.6#	8400'	1140 Sx.	Surface

²² Describe the proposed program. If this application is to DEEPEN or PLUG BACK, give the data on the present productive zone and proposed new productive zone. Describe the blowout prevention program, if any. Use additional sheets if necessary.

SEE ATTACHED SHEET FOR DETAIL

**Permit Expires 2 Years From Approval
Date Unless Drilling Underway**

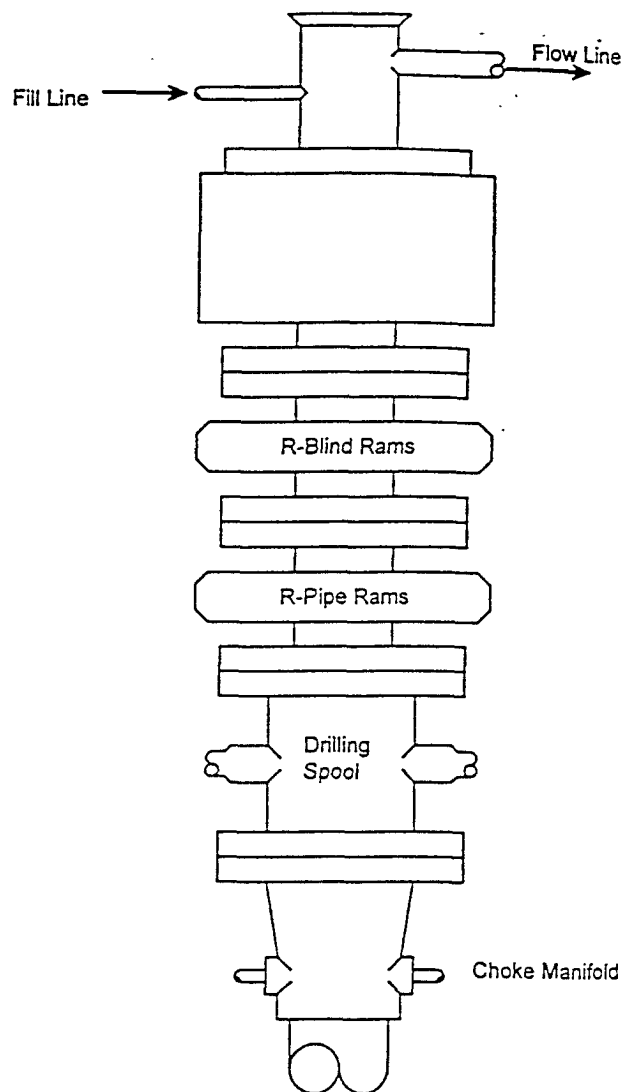
²³ I hereby certify that the information given above is true and complete to the best of my knowledge and belief. Signature: <i>Joe T. Janica</i>		OIL CONSERVATION DIVISION	
Printed name: Joe T. Janica		Approved by: <i>[Signature]</i>	
Title: Permit Eng.		Title: PETROLEUM ENGINEER	
E-mail Address: joejanica@valornet.com		Approval Date: AUG 29 2008	
Date: 08/15/08		Expiration Date:	
Phone: 575-391-8503		Conditions of Approval Attached <input type="checkbox"/>	

VANGUARD PERMIAN, LLC.
STATE SECTION 1-LA # 21
LOT # 2 SECTION 1
T17S-R36E LEA CO. NM

1. Drill 26" hole to 40'. Set 40' of 20" conductor and cement to surface with Redi-mix.
2. Drill 17½" hole to 500'. Run and set 500' of 13 3/8" 48# H-40 ST&C casing. Cement with 150 Sx. of 35/65 CLASS "C" POZ + 6% Bentonite + 3% CaCl, + 4#/Sx. Gilsonite, + .125# polyflakes/Sx. Yield 1.94, tail in with 200 Sx. of Class "C" cement + 2% CaCl, Yield 1.34, circulate cement to surface.
3. Drill 11" hole to 4500'. Run and set 4500' of 8 5/8" 32# J-55 ST&C casing. Cement with 815 Sx. of 50/50 Class "C" POZ + 5% Salt, + 10% Bentonite, 5#/Sx. Gilsonite, + .125# polyflakes, + .2% Antifoamer, Yield 2.47. Tail in with 200 Sx. of Class "C" cement + .1% Retarder, Yield 1.32. Circulate cement to surface.
4. Drill 7 7/8" hole to 8400'. Run and set 8400' of 4½" 11.6# J-55 LT&C casing. Cement with 525 Sx. of 50/50 Class "H" POZ cement + 5% Salt, + 10% Bentonite, + .2% Dispersant, + .2% Uniflac, + .25% Retarder, +.2% Antifoamer, Yield 2.47. Tail in with 615 Sx. of TXI Light weight cement + 1% Salt, + .3% Uniflac, + .1% Dispersant, + .3% Retarder, Yield 1.4, circulate cement to surface.

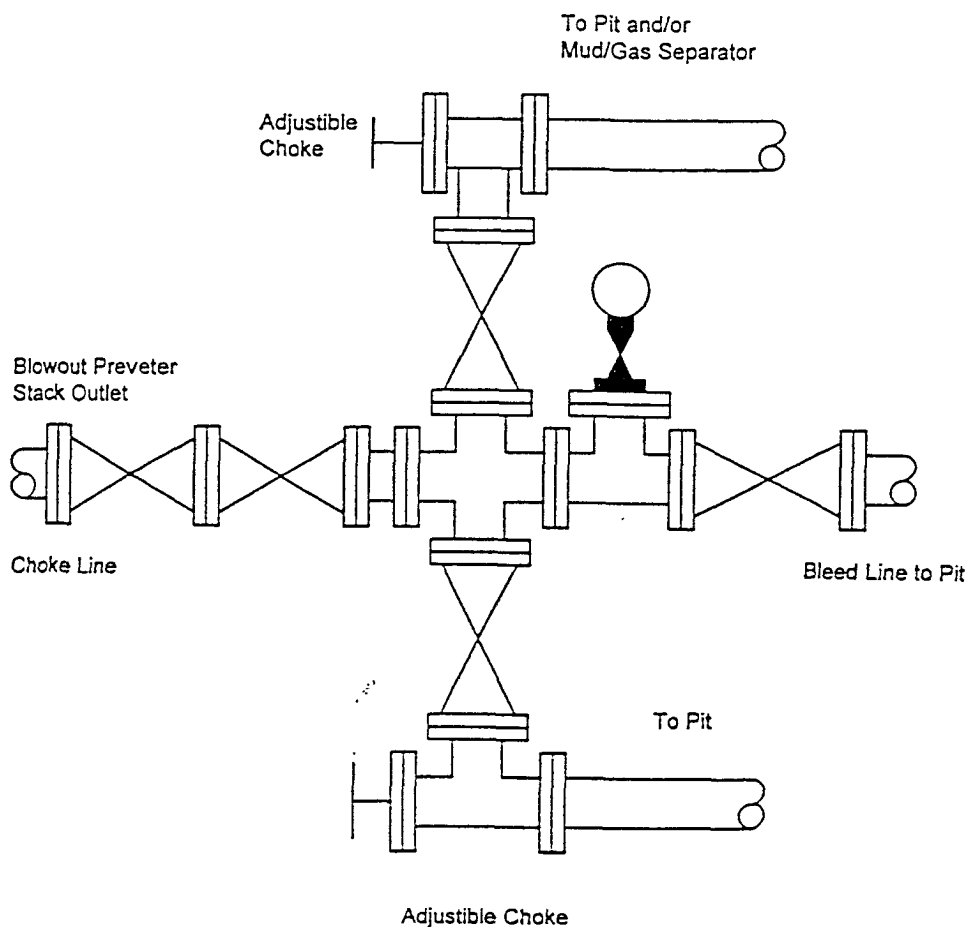
BLOWOUT PREVENTER SYSTEM

3000 PSI



Type 900 SERIES
3000 PSI WP

Choke Manifold Assembly for 5M WP System



State of New Mexico

DISTRICT I

1625 N. FRENCH DR., HOBBS, NM 88240

Energy, Minerals and Natural Resources Department

Form C-102

Revised October 12, 2005

DISTRICT II

1301 W. GRAND AVENUE, ARTESIA, NM 88210

OIL CONSERVATION DIVISION

Submit to Appropriate District Office

1220 SOUTH ST. FRANCIS DR.

State Lease - 4 Copies

Santa Fe, New Mexico 87505

Fee Lease - 3 Copies

DISTRICT III

1000 Rio Brazos Rd., Aztec, NM 87410

DISTRICT IV

1220 S. ST. FRANCIS DR., SANTA FE, NM 87505

WELL LOCATION AND ACREAGE DEDICATION PLAT

☐ AMENDED REPORT

API Number 30-025-39100	Pool Code 40490 ✓	Pool Name LOVINGTON-DRINKARD ✓
Property Code 305160	Property Name STATE SECTION 1 LA	Well Number 21
OGRID No. 258350	Operator Name VANGUARD PERMIAN, LLC	Elevation 3830'

Surface Location

UL or lot No.	Section	Township	Range	Lot Idn	Feet from the	North/South line	Feet from the	East/West line	County
2	1	17-S	36-E		490	NORTH	1650	EAST	LEA

Bottom Hole Location If Different From Surface

UL or lot No.	Section	Township	Range	Lot Idn	Feet from the	North/South line	Feet from the	East/West line	County
Dedicated Acres 40	Joint or Infill	Consolidation Code	Order No.						

NO ALLOWABLE WILL BE ASSIGNED TO THIS COMPLETION UNTIL ALL INTERESTS HAVE BEEN CONSOLIDATED
OR A NON-STANDARD UNIT HAS BEEN APPROVED BY THE DIVISION

LOT 4 39.65 AC	LOT 3 39.75 AC	LOT 2 39.85 AC 490' 1650'	LOT 1 39.95 AC
<p>GEODETIC COORDINATES NAD 27 NME</p> <p>Y=681728.4 N X=815999.8 E</p> <p>LAT.=32.869919° N LONG.=103.304149° W</p>			

OPERATOR CERTIFICATION

I hereby certify that the information herein is true and complete to the best of my knowledge and belief, and that this organization either owns a working interest or unleased mineral interest in the land including the proposed bottom hole location or has a right to drill this well at this location pursuant to a contract with an owner of such mineral or working interest, or to a voluntary pooling agreement or a compulsory pooling order heretofore entered by the Division.

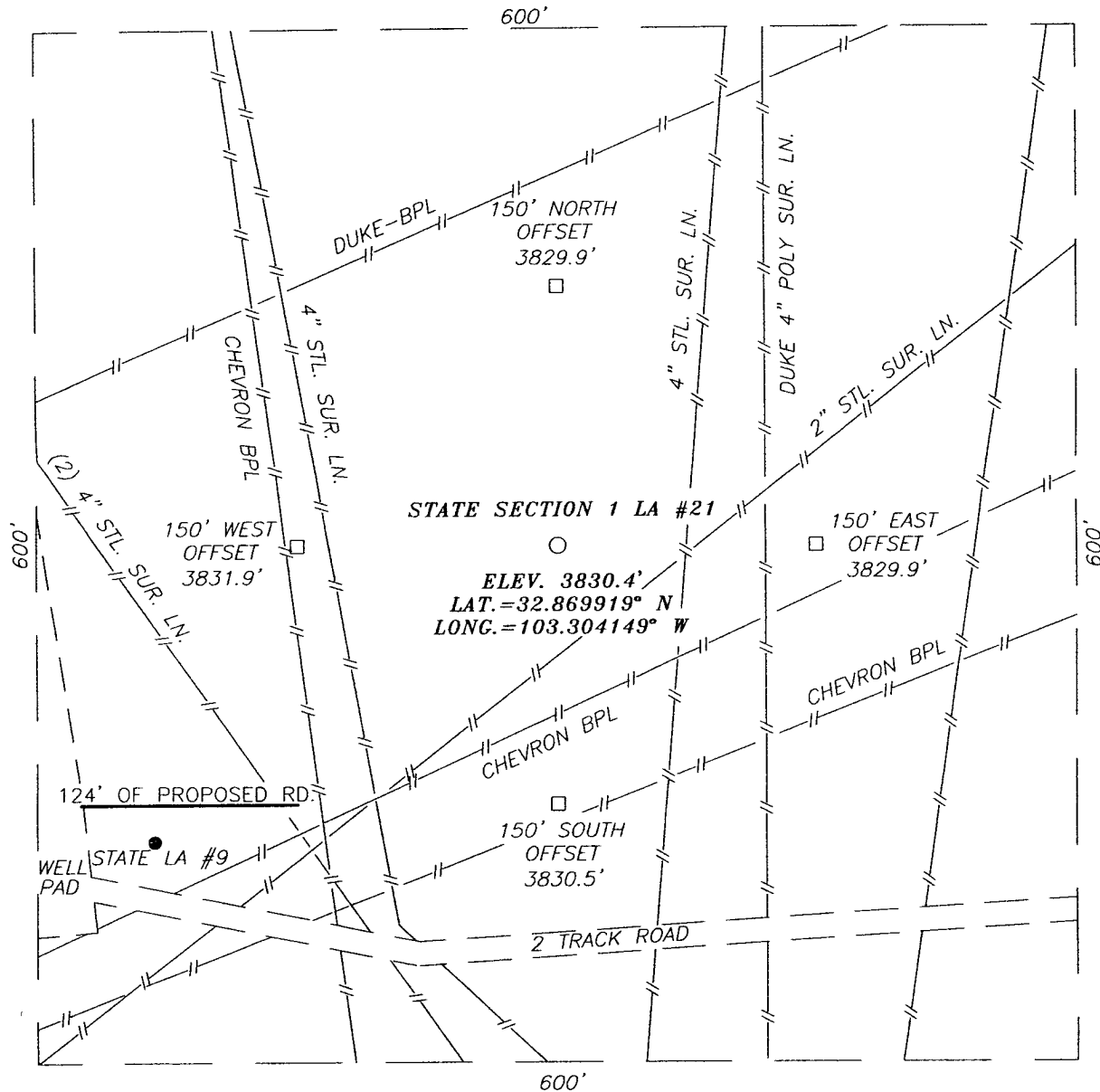
Joe T. Janica
Signature Date
Joe T. Janica 08/15/08
Printed Name

SURVEYOR CERTIFICATION

I hereby certify that the well location shown on this plat was plotted from field notes of actual surveys made by me or under my supervision, and that the same is true and correct to the best of my belief.

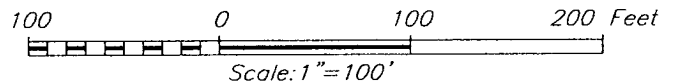
Ronald J. Eidson
Date Surveyed Signature Seal of Professional Surveyor
3239
08-11-08
Certificate Number 12641
RONALD J. EIDSON 3239

SECTION 1, TOWNSHIP 17 SOUTH, RANGE 36 EAST, N.M.P.M.,
LEA COUNTY, NEW MEXICO



DIRECTIONS TO LOCATION

FROM THE INTERSECTION OF STATE HWY. #18 AND CO. RD. L-28 (STYLES RD.), GO NORTHWEST ON ST. HWY. #18 APPROX. 1.5 MILES. TURN LEFT AND GO SOUTHWEST APPROX. 0.8 MILES. TURN LEFT AND GO SOUTH APPROX. 0.1 MILE. TURN LEFT AND GO EAST APPROX. 0.1 MILE TO DRY HOLE. THIS LOCATION IS APPROX. 300' NORTHEAST.



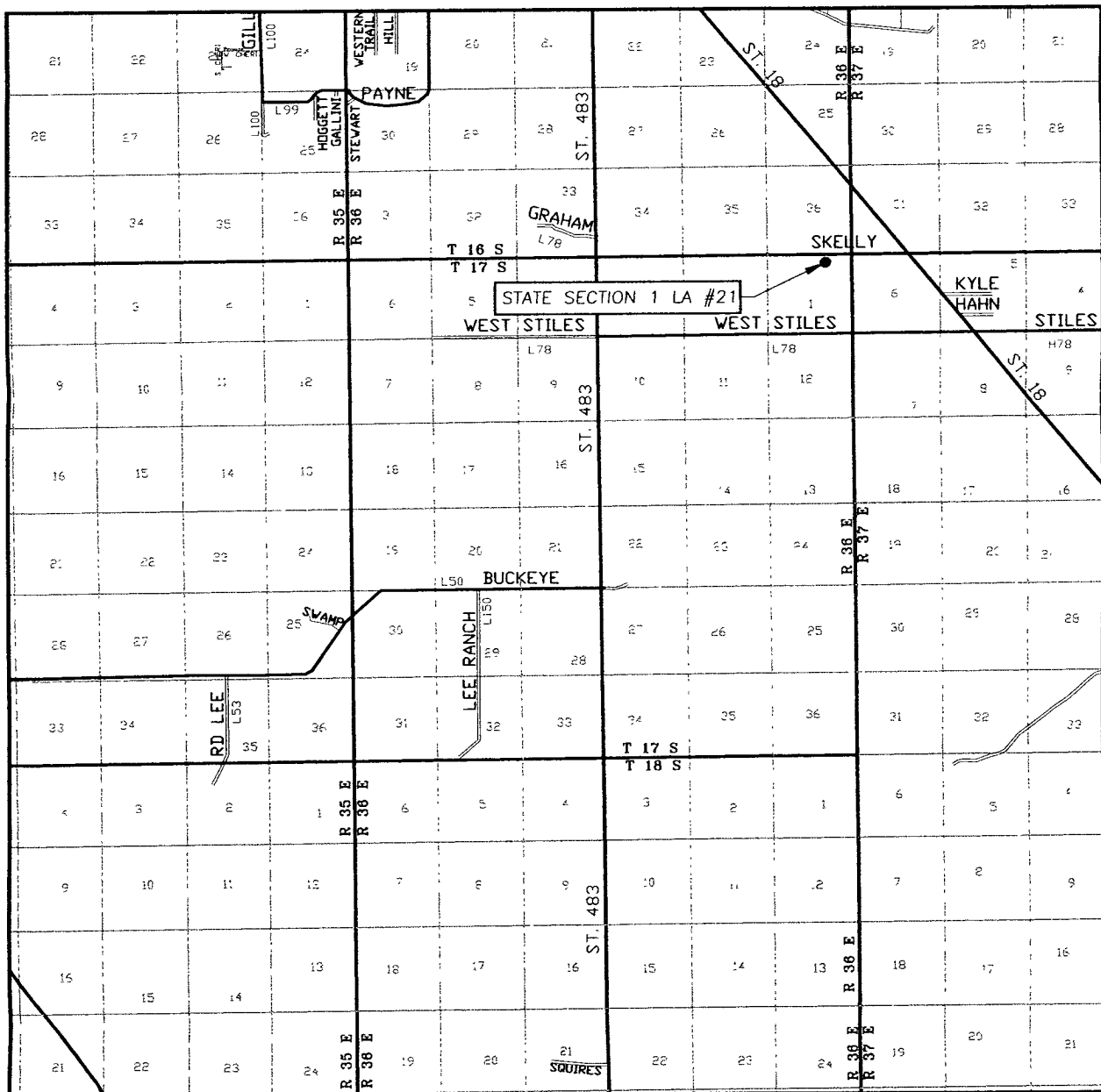
VANGUARD PERMIAN, LLC

STATE SECTION 1 LA #21 WELL
LOCATED 490 FEET FROM THE NORTH LINE
AND 1650 FEET FROM THE EAST LINE OF SECTION 1,
TOWNSHIP 17 SOUTH, RANGE 36 EAST, N.M.P.M.,
LEA COUNTY, NEW MEXICO.

Survey Date: 8/05/08	Sheet 1 of 1 Sheets
W.O. Number: 08 11.1261	Dr By: AR
Date: 8/07/08	08111261
	Scale: 1" = 100'

PROVIDING SURVEYING SERVICES
SINCE 1946
JOHN WEST SURVEYING COMPANY
412 N. DAL PASO
HOBBS, N.M. 88240
(505) 393-3117

VICINITY MAP



SCALE: 1" = 2 MILES

SEC. 1 TWP. 17-S RGE. 36-E
 SURVEY N.M.P.M.
 COUNTY LEA STATE NEW MEXICO
 DESCRIPTION 490' FNL & 1650' FEL
 ELEVATION 3830'
 OPERATOR VANGUARD PERMIAN, LLC
 LEASE STATE SECTION 1 LA

