

DISTRICT I
P.O. Box 1980, Hobbs, NM 88241-1980
DISTRICT II
P.O. Box Drawer DD, Artesia, NM 88211-0719
DISTRICT III
1000 Rio Brazos Rd., Aztec, NM 87410
DISTRICT IV
P.O. Box 2088, Santa Fe, NM 87504-2088

State of New Mexico
Energy, Minerals and Natural Resources Department

OIL CONSERVATION DIVISION

P.O. Box 2088
Santa Fe, New Mexico 87504-2088

Form C-101
Revised February 10, 1999
Instructions on back
Submit to Appropriate District Office
State Lease - 6 Copie
Fee Lease - 5 Copie
☐ AMENDED REPORT

APPLICATION FOR PERMIT TO DRILL, RE-ENTER, DEEPEN, PLUGBACK, OR ADD A ZONE

¹ Operator Name and Address CHEVRON USA INC 15 SMITH ROAD, MIDLAND, TX 79705		² OGRID Number 4323
		³ API Number 30-025-35747
⁴ Property Code 28956	⁵ Property Name NORTH LUSK 32 STATE	⁶ Well No. 1H

⁷ Surface Location									
Ul or lot no.	Section	Township	Range	Lot.Idn	Feet From The	North/South Line	Feet From The	East/West Line	County
C	32	18-S	32-E		330'	NORTH	2258'	WEST	LEA

⁸ Proposed Bottom Hole Location If Different From Surface									
Ul or lot no.	Section	Township	Range	Lot.Idn	Feet From The	North/South Line	Feet From The	East/West Line	County
C	32	18-S	32-E		976'	NORTH	2251'	WEST	LEA
⁹ Proposed Pool 1 NORTH LUSK; STRAWN					¹⁰ Proposed Pool 2				

¹¹ Work Type Code P	¹² Well Type Code O	¹³ Rotary or C.T. ROTARY	¹⁴ Lease Type Code S	¹⁵ Ground Level Elevation 3703'
¹⁶ Multiple No	¹⁷ Proposed Depth 12,066	¹⁸ Formation STRAWN	¹⁹ Contractor	²⁰ Spud Date 11/15/2003

²¹ Proposed Casing and Cement Program					
SIZE OF HOLE	SIZE OF CASING	WEIGHT PER FOOT	SETTING DEPTH	SACKS OF CEMENT	EST. TOP
NO CHANGE					

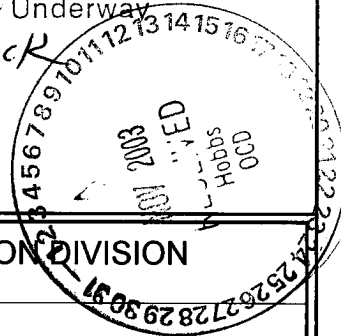
²² Describe the proposed program. If this application is to DEEPEN or PLUG BACK give the data on the present productive zone and proposed new productive zone. Describe the blowout prevention program, if any. Use additional sheets if necessary.

CHEVRON U.S.A. INTENDS TO DRILL A RE-ENTRY IN THE SUBJECT WELL. (THIS IS A SIDETRACK FROM THE EXISTING WELL)

KICK-OFF POINT: 11,259'
TOP OF WINDOW: 11,250"
BTM OF WINDOW: 11,257'
LENGTH OF LATERAL: 850' LONG, 650' VERTICAL SECTION
ANTICIPATED COMPLETION INTERVALS: 11,245'-12,066' OPEN HOLE IN STRAWN

Permit Expires 1 Year From Approval
Date Unless Drilling Underway

Plug-Back



²³ I hereby certify that the rules and regulations of the Oil Conservation Division have been complied with and that the information given above is true and complete to the best of my knowledge and belief.

Signature: *Denise Leake*
Printed Name: Denise Leake

Title: Regulatory Specialist

Date: 10/30/2003

Telephone: 915-687-7375

OIL CONSERVATION DIVISION

Approved By: *Paul J. [Signature]*

Title:

PETROLEUM ENGINEER

Approval Date:

Expiration Date:

Conditions of Approval: **NOV 13 2003**
Attached ☐

DISTRICT I

P.O. Box 1980, Hobbs, NM 88241-1980

DISTRICT II

P.O. Box Drawer DD, Artesia, NM 88211-0719

DISTRICT III

1000 Rio Brazos Rd., Aztec, NM 87410

DISTRICT IV

P.O. Box 2088, Santa Fe, NM 87504-2088

State of New Mexico

Energy, Minerals and Natural Resources Department

Form C-102

Revised February 10, 1999

Instructions on back

Submit to Appropriate District Office

State Lease - 4 Copies

Fee Lease - 3 Copies

☐ AMENDED REPORT

OIL CONSERVATION DIVISION

P.O. Box 2088

Santa Fe, New Mexico 87504-2088

WELL LOCATION AND ACREAGE DEDICATION PLAT

¹ API Number 30-025-35747	² Pool Code 96678	³ Pool Name NORTH LUSK; STRAWN
⁴ Property Code 28956	⁵ Property Name NORTH LUSK 32 STATE	⁶ Well No. 1H
⁷ OGRID Number 4323	⁸ Operator Name CHEVRON USA INC	⁹ Elevation 3703'

¹⁰ Surface Location

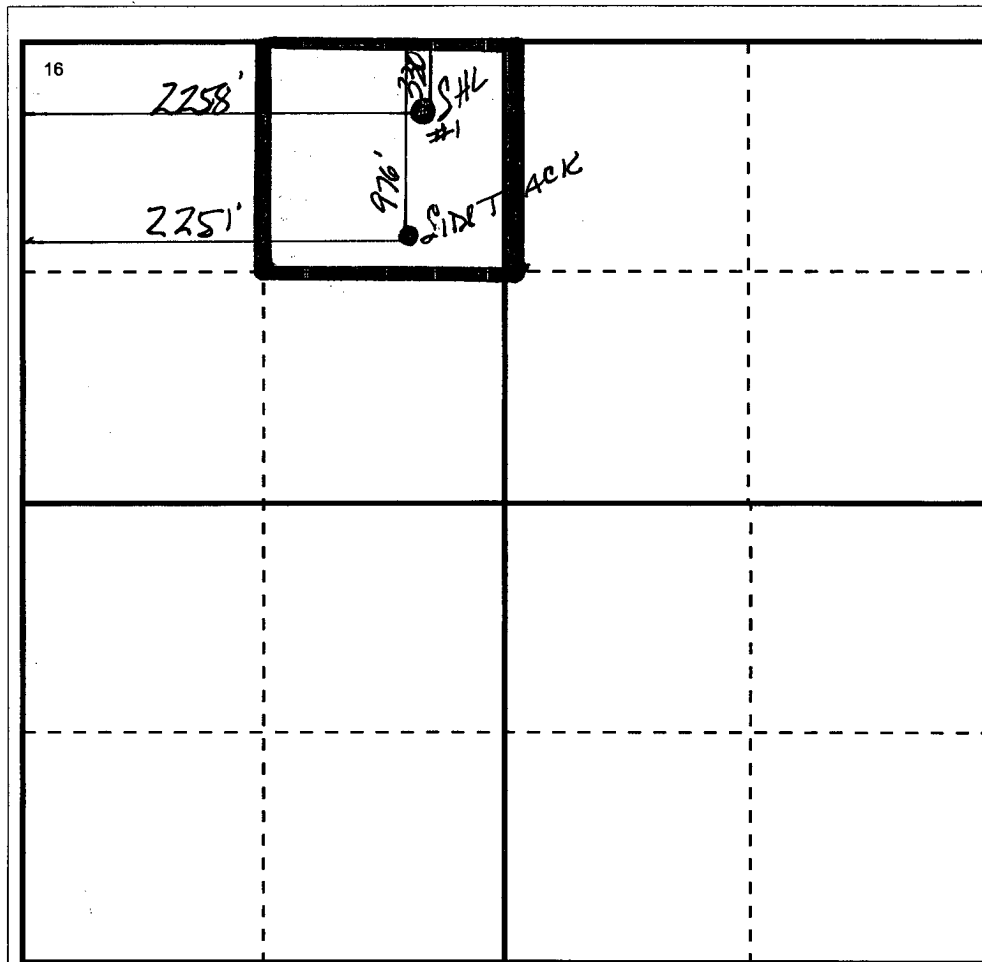
Ul or lot no C	Section 32	Township 18-S	Range 32-E	Lot.Idn	Feet From The 330'	North/South Line NORTH	Feet From The 2258'	East/West Line WEST	County LEA
-------------------	---------------	------------------	---------------	---------	-----------------------	---------------------------	------------------------	------------------------	---------------

¹¹ Bottom Hole Location If Different From Surface

Ul or lot no. C	Section 32	Township 18-S	Range 32-E	Lot.Idn	Feet From The 976'	North/South Line NORTH	Feet From The 2251'	East/West Line WEST	County LEA
--------------------	---------------	------------------	---------------	---------	-----------------------	---------------------------	------------------------	------------------------	---------------

¹² Dedicated Acre 40	¹³ Joint or Infill No	¹⁴ Consolidation Code	¹⁵ Order No.
------------------------------------	-------------------------------------	----------------------------------	-------------------------

NO ALLOWABLE WILL BE ASSIGNED TO THIS COMPLETION UNTIL ALL INTERESTS HAVE BEEN CONSOLIDATED
OR A NON-STANDARD UNIT HAS BEEN APPROVED BY THE DIVISION

¹⁷ OPERATOR CERTIFICATION

I hereby certify that the information contained herein is true and complete to the best of my knowledge and belief

Signature

Printed Name

Denise Leake

Positio

Regulatory Specialist

Date

10/30/2003

¹⁸ SURVEYOR CERTIFICATION

I hereby certify that the well location shown on this plat was plotted from field notes of actual surveys made by me or under my supervision, and that the same is true and correct to the best of my knowledge and belief.

Date Surveyed

Signature & Seal of
Professional Surveyor

Certificate No.