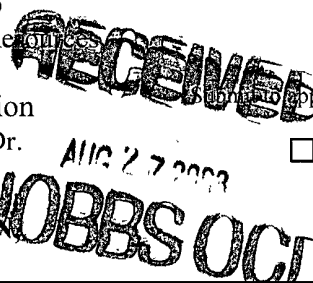


District I
1625 N. French Dr , Hobbs, NM 88240
District II
1301 W Grand Avenue, Artesia, NM 88210
District III
1000 Rio Brazos Road, Aztec, NM 87410
District IV
1220 S St Francis Dr , Santa Fe, NM 87505

State of New Mexico
Energy Minerals and Natural Resources

Form C-101
June 16, 2001

Oil Conservation Division
1220 South St. Francis Dr.
Santa Fe, NM 87505



Submit to appropriate District Office
☐ AMENDED REPORT

**APPLICATION FOR PERMIT TO DRILL, RE-ENTER, DEEPEN,
PLUGBACK, OR ADD A ZONE**

| | | |
|--|--|---|
| ¹ Operator Name and Address CHEVRON MIDCONTINENT, L P 15 SMITH ROAD MIDLAND, TEXAS 79705 | | ² OGRID Number 241333 |
| ³ Property Code 302769 | ⁵ Property Name LOVINGTON DEEP STATE | ³ API Number 30 - 025-30044 |
| ⁹ Proposed Pool 1 LOVINGTON ABO W18cat | | ⁶ Well No. 2 |
| ⁹ Proposed Pool 1 | | ¹⁰ Proposed Pool 2 |

7 Surface Location

| | | | | | | | | | |
|-------------------|--------------|------------------|---------------|---------|-----------------------|---------------------------|----------------------|------------------------|---------------|
| UL or lot no I | Section 1 | Township 17-S | Range 35-E | Lot Idn | Feet from the 1830 | North/South line SOUTH | Feet from the 660 | East/West line EAST | County LEA |
|-------------------|--------------|------------------|---------------|---------|-----------------------|---------------------------|----------------------|------------------------|---------------|

8 Proposed Bottom Hole Location If Different From Surface

| | | | | | | | | | |
|--------------|---------|----------|-------|---------|---------------|------------------|---------------|----------------|--------|
| UL or lot no | Section | Township | Range | Lot Idn | Feet from the | North/South line | Feet from the | East/West line | County |
|--------------|---------|----------|-------|---------|---------------|------------------|---------------|----------------|--------|

Additional Well Information

| | | | | |
|------------------------------|-----------------------------------|--------------------------------|------------------------------------|--|
| Work Type Code P | ¹² Well Type Code O | ¹³ Cable/Rotary | ¹⁴ Lease Type Code S | ¹⁵ Ground Level Elevation 3929' GL |
| ¹⁶ Multiple NO | ¹⁷ Proposed Depth | ¹⁸ Formation ABO | ¹⁹ Contractor | ²⁰ Spud Date |

21 Proposed Casing and Cement Program

| | | | | | |
|-----------|-------------|--------------------|---------------|-----------------|---------------|
| Hole Size | Casing Size | Casing weight/foot | Setting Depth | Sacks of Cement | Estimated TOC |
| NO CHANGE | | | | | |
| | | | | | |
| | | | | | |
| | | | | | |
| | | | | | |

²² Describe the proposed program. If this application is to DEEPEN or PLUG BACK, give the data on the present productive zone and proposed new productive zone. Describe the blowout prevention program, if any. Use additional sheets if necessary.

CHEVRON MIDCONTINENT, L.P. INTENDS TO RECOMLETE THE SUBJECT WELL INTO THE ABOPOOL, AFTER TEMPORARILY ABANDONING THE UPPER PENN @ 10700' & THE WOLFCAMP @ 10200'

THE INTENDED PROCEDURE AND CURRENT AND PROPOSED WELLBORE DIAGRAMS ARE ATTACHED FOR YOUR APPROVAL.

**Permit Expires 2 Years From Approval
Date Unless Drilling Underway
Plugback**

| | | | |
|---|-----------------------|--|-----------------|
| ²³ I hereby certify that the information given above is true and complete to the best of my knowledge and belief | | OIL CONSERVATION DIVISION | |
| Signature. DENISE PINKERTON | | Approved by | |
| Printed name. DENISE PINKERTON | | Title. PETROLEUM ENGINEER | |
| Title. REGULATORY SPECIALIST | | Approval Date. SEP 02 2008 | Expiration Date |
| E-mail Address leakejd@chevron.com | | | |
| Date. 08-26-2008 | Phone 432-687-7375 | Conditions of Approval Attached <input type="checkbox"/> | |

WELL WORKOVER PROCEDURE

DATE: 8/4/2008

FIELD: Lovington

AREA: Lovington

LSE/UNIT: Lovington Deep State Unit

WELL NO. 2

DESCRIPTION OF WORK: Temporarily abandon Upper Penn at 10700' and Wolfcamp at 10200'. Perforate and recomplete in the Abo at 8720-8999'.

CONDITION OF HOLE:

| | | |
|---------------------|---|---------------------|
| TOTAL DEPTH: 10957' | PBTD: 10930' | GL ELEVATION: 3929' |
| CASING RECORD: | 13-3/8" 48# H-40 @ 466' (w/500 sxs, circ) 8-5/8" 32# K-55 @ 5200' (w/3290 sxs, circ) 5-1/2" Liner 15&17# @ 4815-10955' (w/1375 sxs) | |
| PERFORATIONS: | Wolfcamp: 10284' - 10380' Upper Penn: 10814' - 10874' | |

PROCEDURE:

1. MIRU pulling unit and reverse unit. ND WH. POOH and lay down rods and pump. NU BOP. Release TAC. POOH with tubing while scanning. Lay down any bad joints. Prepare to temporarily abandon the lower zones.
2. **Watch for liner top @ 4815'**. PU 5-1/2" CIBP and RIH to approx 10700' to isolate lower zone (Upper Penn). Cap w/ 35' of cmt. POOH. PU 5-1/2" CIBP and RIH to approx 10200' to isolate upper zone (Wolfcamp). Cap w/ 35' cmt. Prepare to perforate.
3. MIRU Baker. PU and RIH w/ perforating guns. Perforate Abo in the following intervals @ 2 SPF (180 degree phasing) top down. Correlate w/ Computalog's Compensated Neutron/Lithodensity Log dated 9/6/1991:

| | | |
|------------|------------|------------|
| 8720-8722' | 8831-8835' | 8936-8938' |
| 8725-8729 | 8848-8854 | 8947-8950 |
| 8735-8737 | 8857-8861 | 8958-8960 |
| 8740-8744 | 8868-8880 | 8964-8966 |
| 8752-8754 | 8882-8885 | 8970-8973 |
| 8773-8790 | 8892-8903 | 8986-8988 |
| 8792-8796 | 8914-8920 | 8994-8999 |
| 8813-8818 | 8924-8926 | |
4. POOH w/ perforating gun. Prepare to acid stimulate.

5. PU 5-1/2" treating packer on 2-7/8" WS. RIH to approx 8670'. Acidize Abo interval (8720-8999') with 6000 gal 15% NEFe in 5 stages with 1000-1200# GRS mixed in 10 ppg gelled brine between each stage to divert. Record ISIP, 5, 10 and 15 minute shut in pressure. Flow or swab load back monitoring fluid entry and oil cut. Catch fluid sample and run analysis for sulfur content.
6. Unset packer and RIH and circulate clean to +/- 9100'. POOH with tubing and packer.
7. PU and RIH with production equipment as per ALS design. ND BOP NU WH. Place well on production and test. When rate stabilizes shoot fluid level.

| | | |
|------------------|---------------------|----------------|
| Ivone da Silva | Production Engineer | (432) 238-0903 |
| Larry Birkelbach | D&C Engineer | (432) 208-4772 |
| Matt Wasson | Geologist | (432) 687-7407 |

Well: Lovington Deep State # 02

Field: Lovington

Reservoir: Commingled Wolfcamp
and Upper Penn

Location:

1830' FSL & 660' FEL
Section 01
Township 17S
Range 35E Unit 1
County Lea State NM

Elevations:

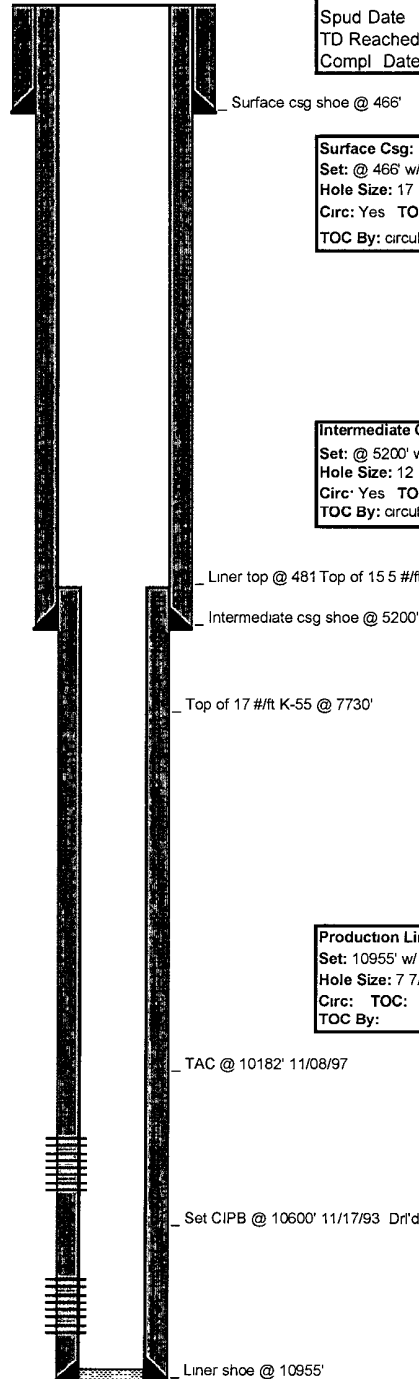
GL 3929'
KB 3945'

Log Formation Tops

| | |
|--------------|------|
| Salt | |
| Base Salt | |
| Yates | |
| Seven Rivers | 3367 |
| Queen | 3787 |
| Grayburg | 4470 |
| San Andres | 4683 |
| | |
| | |
| | |

This wellbore diagram is based on the most recent information regarding wellbore configuration and equipment that could be found in the Midland Office wellfiles and computer databases as of the update below. Verify what is in the hole with the wellfile in the Lovington Field Office. Discuss w/WEO Engineer, WO Rep, OS, ALS, & FS prior to rigging up on well regarding any hazards or unknown issues pertaining to the well

**Current
Wellbore Diagram**



Chevno IK7526
API No 3002530044
L5/L6
Spud Date 10/05/87
TD Reached
Compl Date 11/26/87

Surface Csg: 13 3/8" 48#/ft H-40
Set: @ 466' w/ 500 sx cmt (circ 50 sx to surface)
Hole Size: 17 1/2"
Circ: Yes **TOC:** surface
TOC By: circulation

Intermediate Csg: 8 5/8" 32#/ft K-55
Set: @ 5200' w/ 3290 sx cmt (circ 690 sx to surface)
Hole Size: 12 1/4"
Circ: Yes **TOC:** surface
TOC By: circulation

Production Liner: 5 1/2" 15 5 & 17#/ft K-55 & L-80 (LT&C)
Set: 10955' w/ 1375 sx cmt in 1 stage w/ DV tool
Hole Size: 7 7/8"
Circ: **TOC:**
TOC By:

Active Perf's

Wolfcamp
10284' - 10380'
11/17/1993

Upper Penn
10814' - 10874'
11/25/1987

*CMLP
State
Dil*

40470

Well: Lovington Deep State # 02

Field: Lovington

Res: Abo

Location:

1830' FSL & 660' FEL
Section: 01
Township: 17S
Range: 35E Unit: I
County: Lea State: NM

Elevations:

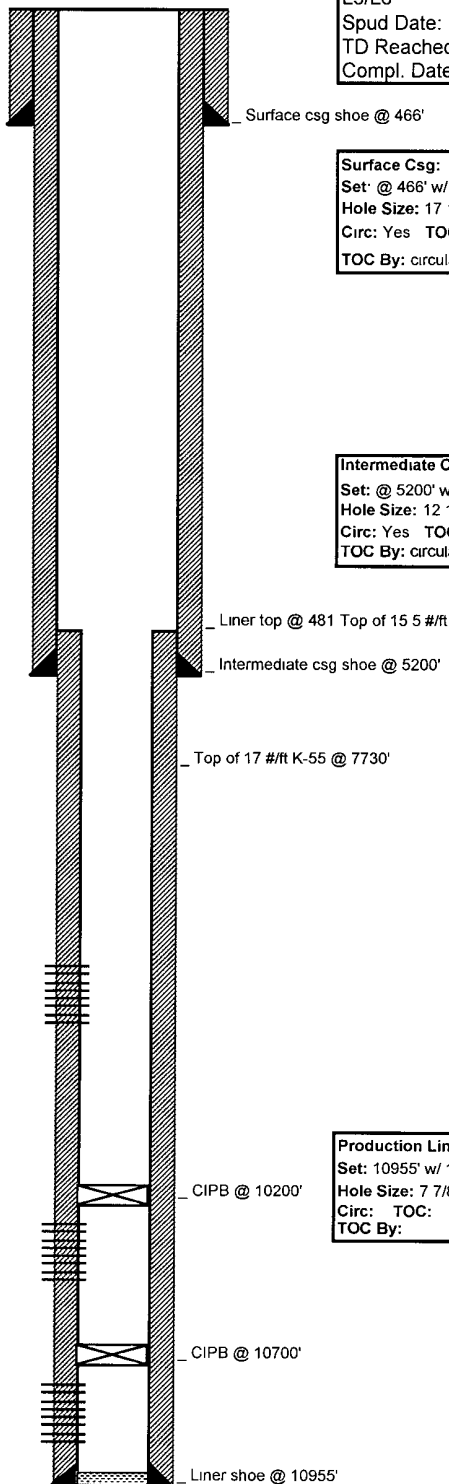
GL: 3929'
KB: 3945'

Log Formation Tops

| | |
|--------------|------|
| Salt | |
| Base Salt | |
| Yates | |
| Seven Rivers | 3367 |
| Queen | 3787 |
| Grayburg | 4470 |
| San Andres | 4683 |
| | |
| | |
| | |

This wellbore diagram is based on the most recent information regarding wellbore configuration and equipment that could be found in the Midland Office wellfiles and computer databases as of the update below. Verify what is in the hole with the wellfile in the Lovington Field Office. Discuss w/WEO Engineer, WO Rep, OS, ALS, & FS prior to rigging up on well regarding any hazards or unknown issues pertaining to the well

Proposed Wellbore Diagram



Well ID Info:

Chevron: IK7526
API No 3002530044
L5/L6
Spud Date: 10/05/87
TD Reached
Compl. Date: 11/26/87

Surface Csg: 13 3/8" 48#/ft H-40

Set: @ 466' w/ 500 sx cmt (circ 50 sx to surface)
Hole Size: 17 1/2"
Circ: Yes TOC: surface
TOC By: circulation

Intermediate Csg: 8 5/8" 32#/ft K-55

Set: @ 5200' w/ 3290 sx cmt (circ 690 sx to surface)
Hole Size: 12 1/4"
Circ: Yes TOC: surface
TOC By: circulation

Production Liner: 5 1/2" 15 5 & 17#/ft K-55 & L-80 (LT&C)

Set: 10955' w/ 1375 sx cmt in 1 stage w/ DV tool
Hole Size: 7 7/8"
Circ: TOC:
TOC By:

New Perf's

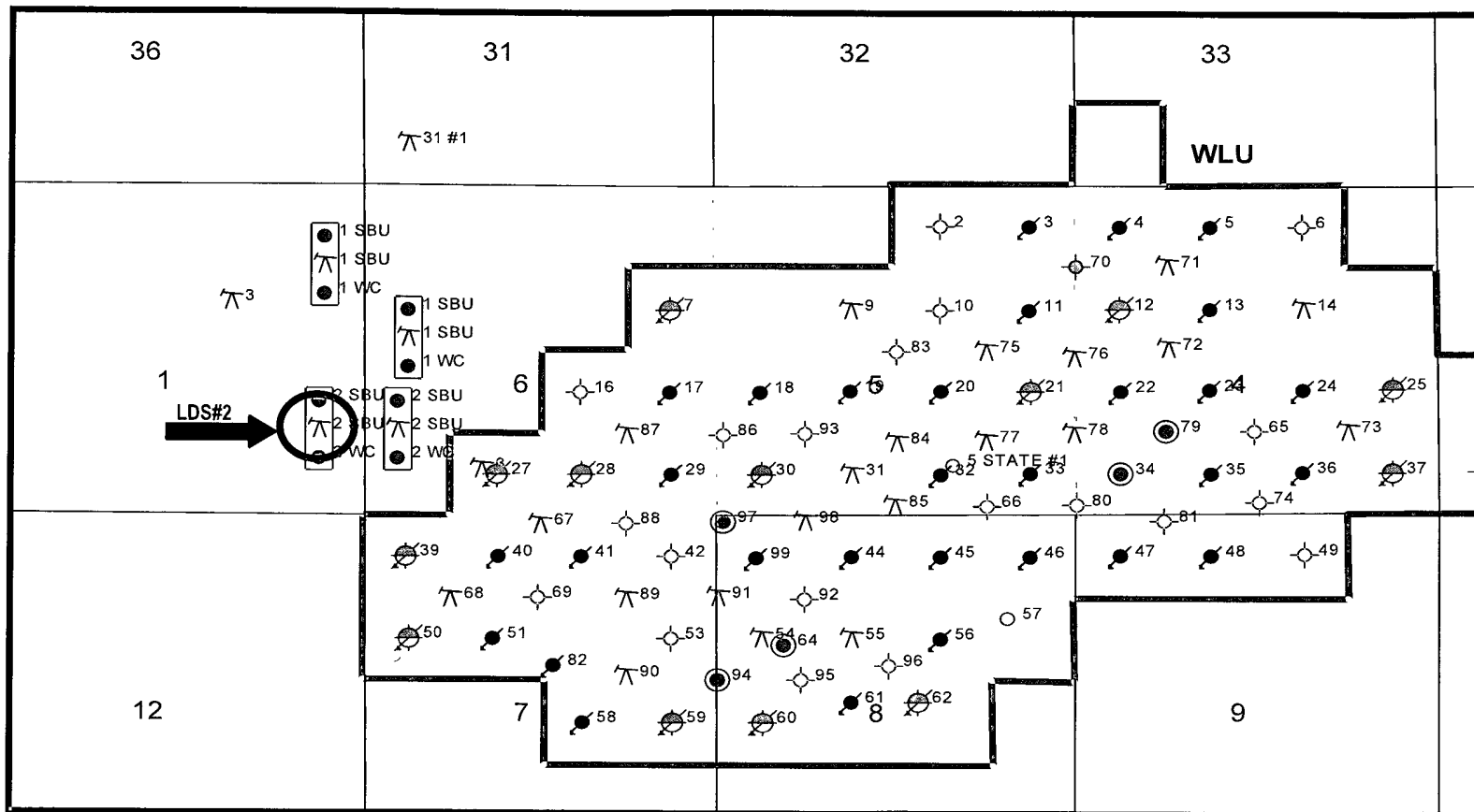
Abo
8720' - 8999'

Previous Perf's

Wolfcamp
10284' - 10380'
11/17/1993

Upper Penn
10814' - 10874'
11/25/1987

TD: 10957' PBTD: 10930'



District I

1625 N. French Dr., Hobbs, NM 88240

District II

1301 W. Grand Avenue, Artesia, NM 88210

District III

1000 Rio Brazos Rd., Aztec, NM 87410

District IV

1220 S. St. Francis Dr., Santa Fe, NM 87505

State of New Mexico
Energy, Minerals & Natural Resources Department
OIL CONSERVATION DIVISION
1220 South St. Francis Dr.
Santa Fe, NM 87505

Form C-102

Revised October 12, 2005

Submit to Appropriate District Office

State Lease - 4 Copies

Fee Lease - 3 Copies

| AMENDED REPORT

WELL LOCATION AND ACREAGE DEDICATION PLAT

| | | |
|---|--|---|
| ¹ API Number 30-025-30044 | ² Pool Code 40470 | ³ Pool Name <i>Wildcat</i> LOVINGTON ABO |
| ⁴ Property Code <i>302769</i> | ⁵ Property Name LOVINGTON DEEP STATE | |
| ⁷ OGRID No. 241333 | ⁸ Operator Name CHEVRON MIDCONTINENT, L.P. | ⁶ Well Number 2 |
| | | ⁹ Elevation 3929' GL |

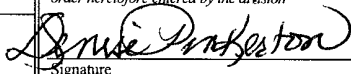
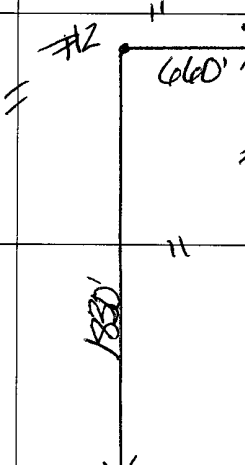
¹⁰ Surface Location

| UL or lot no. | Section | Township | Range | Lot Idn | Feet from the | North/South line | Feet from the | East/West line | County |
|---------------|---------|----------|-------|---------|---------------|------------------|---------------|----------------|--------|
| I | 1 | 17-S | 35-E | | 1830 | SOUTH | 660 | EAST | LEA |

¹¹ Bottom Hole Location If Different From Surface

| UL or lot no. | Section | Township | Range | Lot Idn | Feet from the | North/South line | Feet from the | East/West line | County |
|-------------------------------------|-------------------------------|----------------------------------|-------|-------------------------|---------------|------------------|---------------|----------------|--------|
| | | | | | | | | | |
| ¹² Dedicated Acres 40 | ¹³ Joint or Infill | ¹⁴ Consolidation Code | | ¹⁵ Order No. | | | | | |

No allowable will be assigned to this completion until all interests have been consolidated or a non-standard unit has been approved by the division.

| | | | | | | |
|----|--|--|--|--|---|--|
| 16 | | | | | ¹⁷ OPERATOR CERTIFICATION | |
| | | | | | <i>I hereby certify that the information contained herein is true and complete to the best of my knowledge and belief, and that this organization either owns a working interest or unleased mineral interest in the land including the proposed bottom hole location or has a right to drill this well at this location pursuant to a contract with an owner of such a mineral or working interest, or to a voluntary pooling agreement or a compulsory pooling order heretofore entered by the division</i> | |
| | | | | | <div style="display: flex; justify-content: space-between;"> <div>  Signature </div> <div> 08-26-2008 Date </div> </div> | |
| | | | | | DENISE PINKERTON REGULATORY SPECIALIST Printed Name | |
| | | | | | ¹⁸ SURVEYOR CERTIFICATION | |
| | | | | | <i>I hereby certify that the well location shown on this plat was plotted from field notes of actual surveys made by me or under my supervision, and that the same is true and correct to the best of my belief</i> | |
| | | | | | <div style="display: flex; justify-content: space-between;"> <div> Date of Survey Signature and Seal of Professional Surveyor </div> <div>  </div> </div> | |
| | | | | | Certificate Number | |