

RECEIVED

State of New Mexico

DISTRICT I

1625 N. FRENCH DR., HOBBS, NM 88240

Energy, Minerals and Natural Resources Department

Form C-102

Revised October 12, 2005

DISTRICT II

1301 W. GRAND AVENUE, ARTESIA, NM 88210

OIL CONSERVATION DIVISION

Submit to Appropriate District Office

DISTRICT III

1000 Rio Brazos Rd., Aztec, NM 87410

1220 SOUTH ST. FRANCIS DR.  
SANTA FE, New Mexico 87505

State Lease - 4 Copies  
Fee Lease - 3 Copies

DISTRICT IV

1220 S. ST. FRANCIS DR., SANTA FE, NM 87505

WELL LOCATION AND ACREAGE DEDICATION PLAT

☐ AMENDED REPORT

API Number <b>30-025-39134</b>		Pool Code <b>50350</b>	Pool Name <b>Denise J Kelly Grayburg</b>
Property Code <b>2634</b>	Property Name <b>C.L. HARDY</b>		Well Number <b>9</b>
OGRID No. <b>4323</b>	Operator Name <b>CHEVRON USA INC.</b>		Elevation <b>3494'</b>

Surface Location

UL or lot No.	Section	Township	Range	Lot Idn	Feet from the	North/South line	Feet from the	East/West line	County
K	20	21-S	37-E		1730	SOUTH	2310	WEST	LEA

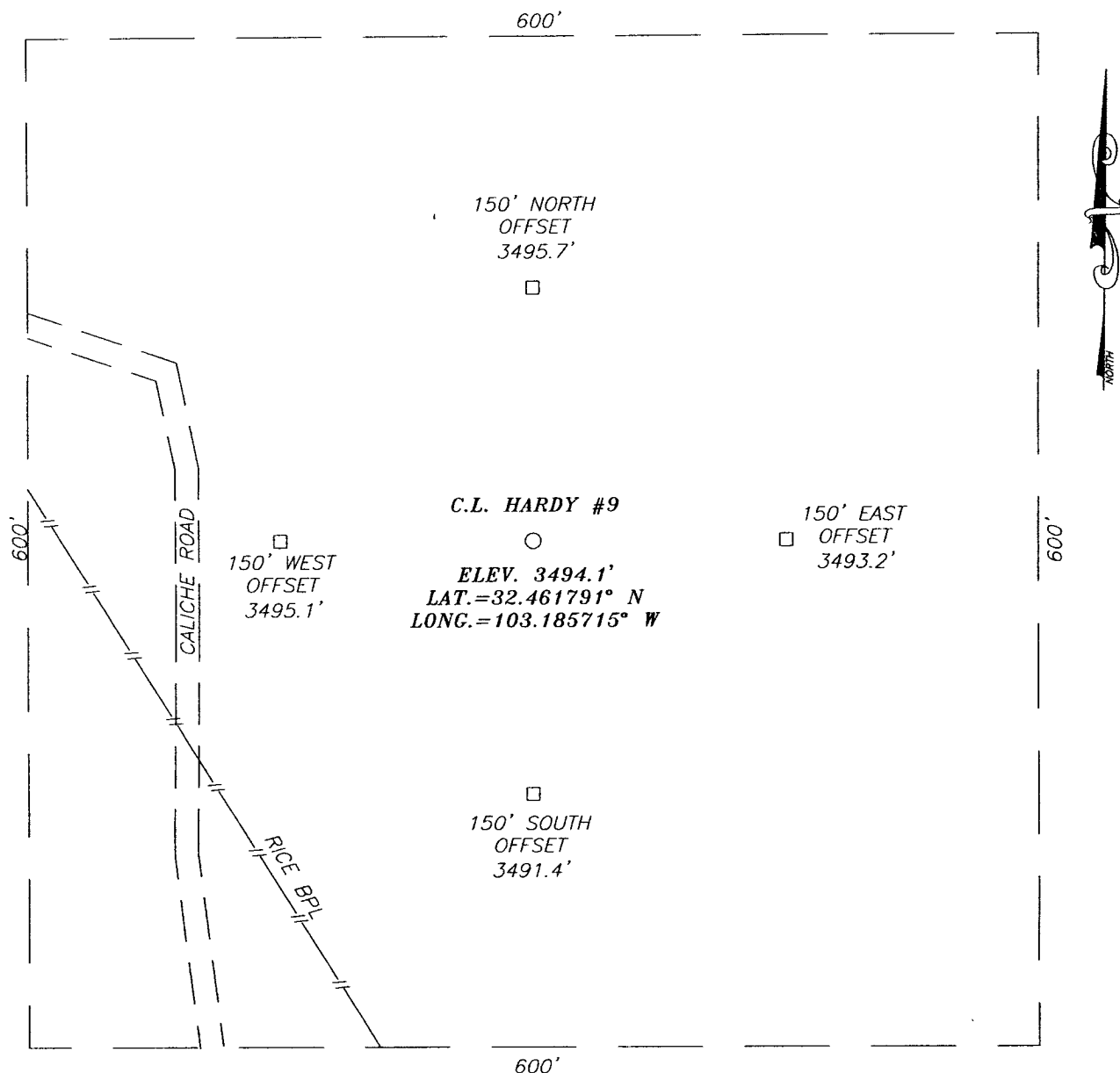
Bottom Hole Location If Different From Surface

UL or lot No.	Section	Township	Range	Lot Idn	Feet from the	North/South line	Feet from the	East/West line	County
Dedicated Acres <b>40</b>		Joint or Infill	Consolidation Code		Order No.				

NO ALLOWABLE WILL BE ASSIGNED TO THIS COMPLETION UNTIL ALL INTERESTS HAVE BEEN CONSOLIDATED  
OR A NON-STANDARD UNIT HAS BEEN APPROVED BY THE DIVISION

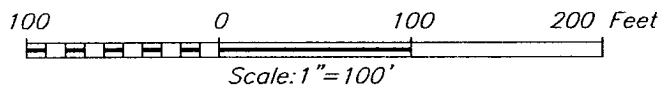
	<p><b>OPERATOR CERTIFICATION</b></p> <p>I hereby certify that the information herein is true and complete to the best of my knowledge and belief, and that this organization either owns a working interest or unleased mineral interest in the land including the proposed bottom hole location or has a right to drill this well at this location pursuant to a contract with an owner of such mineral or working interest, or to a voluntary pooling agreement or a compulsory pooling order heretofore entered by the division.</p> <p><i>Denise Pinkerton</i> 8-28-08 Signature Date <b>Denise Pinkerton</b> Printed Name</p>
	<p><b>SURVEYOR CERTIFICATION</b></p> <p>I hereby certify that the well location shown on this plat was plotted from field notes of actual surveys made by me or under my supervision, and that the same is true and correct to the best of my belief.</p>
	<p>Date Signed <b>8/30/08</b> LA Signature &amp; Seal of Professional Surveyor <i>Ronald J. Eidson</i> Professional Surveyor 3239</p>
	<p>Certificate No. <b>RONALD EIDSON 3239</b></p>

SECTION 29, TOWNSHIP 21 SOUTH, RANGE 37 EAST, N.M.P.M.,  
LEA COUNTY, NEW MEXICO



DIRECTIONS TO LOCATION

FROM INTERSECTION ST. HWY. #8 AND CO. RD. #E33 (TURNER), GO NORTH ON CO. RD. #E33 APPROX. 1.15 MILES. TURN LEFT AND GO WEST APPROX. 0.64 MILES. TURN RIGHT AND NORTH APPROX. 0.2 MILES. THIS LOCATION IS APPROX. 210 FEET TO THE EAST.



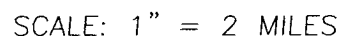
**CHEVRON USA INC.**

C.L. HARDY #9 WELL  
LOCATED 1730 FEET FROM THE SOUTH LINE  
AND 2310 FEET FROM THE WEST LINE OF SECTION 20,  
TOWNSHIP 21 SOUTH, RANGE 37 EAST, N.M.P.M.,  
LEA COUNTY, NEW MEXICO.

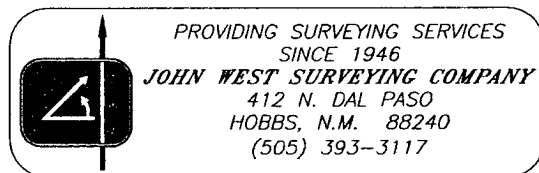
Survey Date: 7/21/08		Sheet 1 of 1 Sheets	
W.O. Number: 08.11.1150		Dr By: LA	Rev 1:N/A
Date: 7/29/08		08111150	Scale: 1"=100'



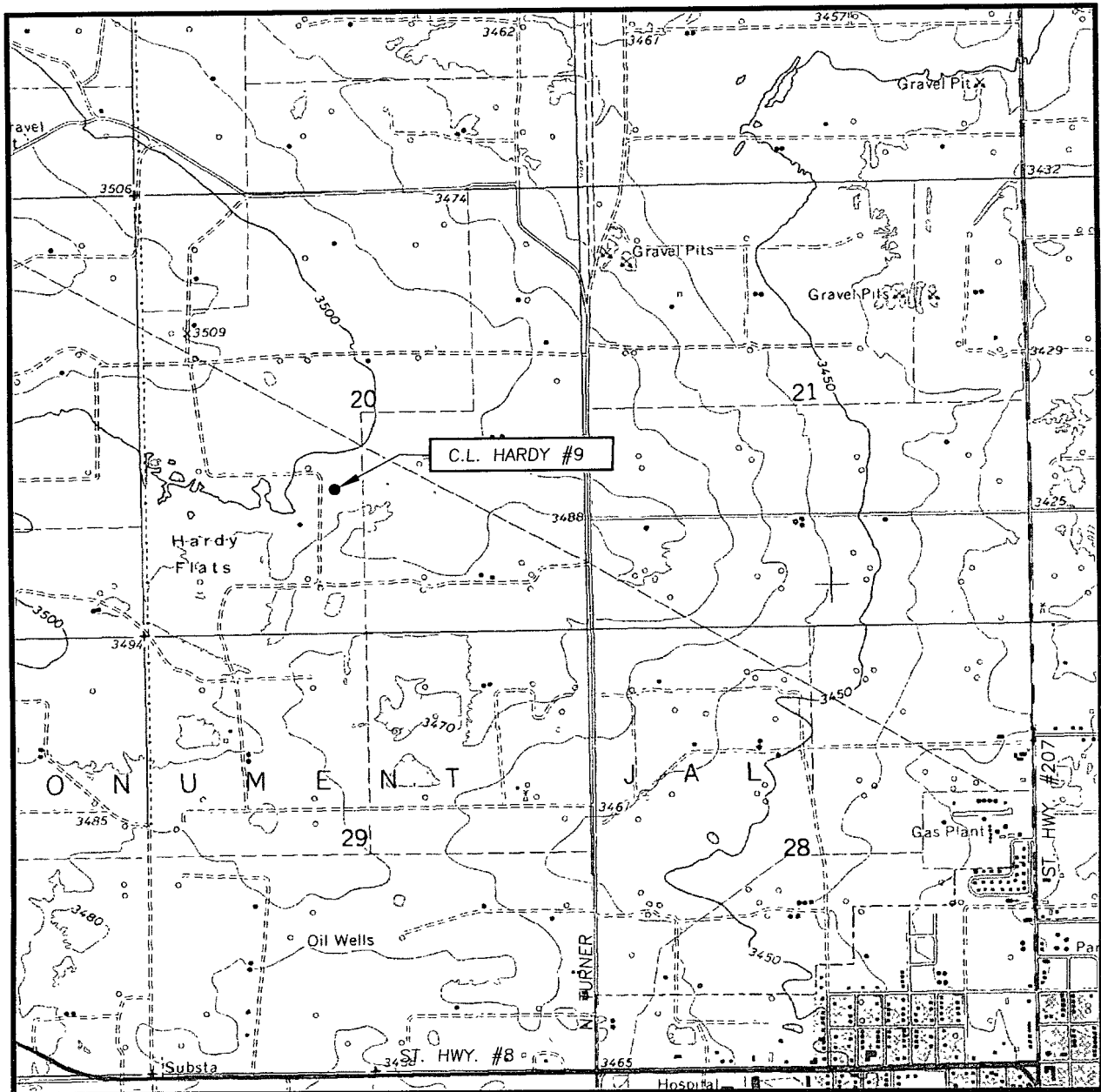
PROVIDING SURVEYING SERVICES  
SINCE 1946  
**JOHN WEST SURVEYING COMPANY**  
412 N. DAL PASO  
HOBBS, N.M. 88240  
(505) 393-3117



LEASE C.L. HARDY



# LOCATION VERIFICATION MAP



SCALE: 1" = 2000'

CONTOUR INTERVAL:  
EUNICE, N.M. - 10'

SEC. 20 TWP. 21-S RGE. 37-E

SURVEY \_\_\_\_\_ N.M.P.M.

COUNTY LEA STATE NEW MEXICO

DESCRIPTION 1730' FSL & 2310' FWL

ELEVATION 3494'

OPERATOR CHEVRON USA INC.

LEASE C.L. HARDY

U.S.G.S. TOPOGRAPHIC MAP  
EUNICE, N.M.

