

RECEIVED  
SEP 11 2008  
HOBBS, NM

UNITED STATES DEPARTMENT OF THE INTERIOR  
BUREAU OF LAND MANAGEMENT  
N.M. Oil Cons. Division  
1625 N French Dr.  
Hobbs, NM 88240

FORM APPROVED  
OMB No. 1004-0137  
Expires: March 31, 2007

Do not use this form for proposals to drill or to re-enter an abandoned well. Use Form 3160-3 (APD) for such proposals.

**SUBMIT IN TRIPLICATE- Other instructions on reverse side.**

1. Type of Well  
☒ Oil Well ☐ Gas Well ☐ Other

2. Name of Operator  
Cano Petro of New Mexico

3a. Address  
801 Cherry Street Suite 3200

3b. Phone No. (include area code)  
817-698-0900

4. Location of Well (Footage, Sec., T., R., M., or Survey Description)  
Facility A, Section 6 T8S R31E

5. Lease Serial No  
NMNM15016

6. If Indian, Allottee or Tribe Name

7. If Unit or CA/Agreement, Name and/or No

8. Well Name and No.  
Exxon Federal 1, 2, 3, 4 and battery

9. API Well No. 30-005-20557  
30-005-20585, 30-005-20584

10. Field and Pool, or Exploratory Area 30-005-20611  
Tom Tom

11. County or Parish, State  
Chaves

**12. CHECK APPROPRIATE BOX(ES) TO INDICATE NATURE OF NOTICE, REPORT, OR OTHER DATA**

TYPE OF SUBMISSION	TYPE OF ACTION			
<input type="checkbox"/> Notice of Intent	<input type="checkbox"/> Acidize	<input type="checkbox"/> Deepen	<input type="checkbox"/> Production (Start/Resume)	<input type="checkbox"/> Water Shut-Off
<input type="checkbox"/> Subsequent Report	<input type="checkbox"/> Alter Casing	<input type="checkbox"/> Fracture Treat	<input checked="" type="checkbox"/> Reclamation	<input type="checkbox"/> Well Integrity
<input type="checkbox"/> Final Abandonment Notice	<input type="checkbox"/> Casing Repair	<input type="checkbox"/> New Construction	<input type="checkbox"/> Recomplete	<input type="checkbox"/> Other
	<input type="checkbox"/> Change Plans	<input type="checkbox"/> Plug and Abandon	<input type="checkbox"/> Temporarily Abandon	
	<input type="checkbox"/> Convert to Injection	<input type="checkbox"/> Plug Back	<input type="checkbox"/> Water Disposal	

13. Describe Proposed or Completed Operation (clearly state all pertinent details, including estimated starting date of any proposed work and approximate duration thereof. If the proposal is to deepen directionally or recompletable horizontally, give subsurface locations and measured and true vertical depths of all pertinent markers and zones. Attach the Bond under which the work will be performed or provide the Bond No. on file with BLM/BIA. Required subsequent reports shall be filed within 30 days following completion of the involved operations. If the operation results in a multiple completion or recompletable in a new interval, a Form 3160-4 shall be filed once testing has been completed. Final Abandonment Notices shall be filed only after all requirements, including reclamation, have been completed, and the operator has determined that the site is ready for final inspection.)

In response to Certified Letter Number 700300000044543038 dated June 5, 2008 from your office, Cano has completed surface cleanup of the above-referenced locations.

Cano used earth moving equipment to remove surface areas around the well bores. Cano arranged transportation and disposal of about 260 cubic yards of removed surface material. The material was disposed at the Gandy-Marley Incorporated Landfill near the field. Disposal tickets are attached.

Captioned Photos of the locations as of August 13, 2008 are attached.

A reference aerial photograph with the sites identified on it is attached.

Cano is prepared for final inspection of the referenced locations. Please call John O'Malley at 817-698-0900 should you have any questions.

14. I hereby certify that the foregoing is true and correct  
Name (Printed/Typed)

Signature

John O'Malley

Title Health, Safety and Environmental

Date

8-21-08

ACCEPTED FOR RECORD THIS SPACE FOR FEDERAL OR STATE OFFICE USE

Approved by

DAVID R. GLASS

Title

Date

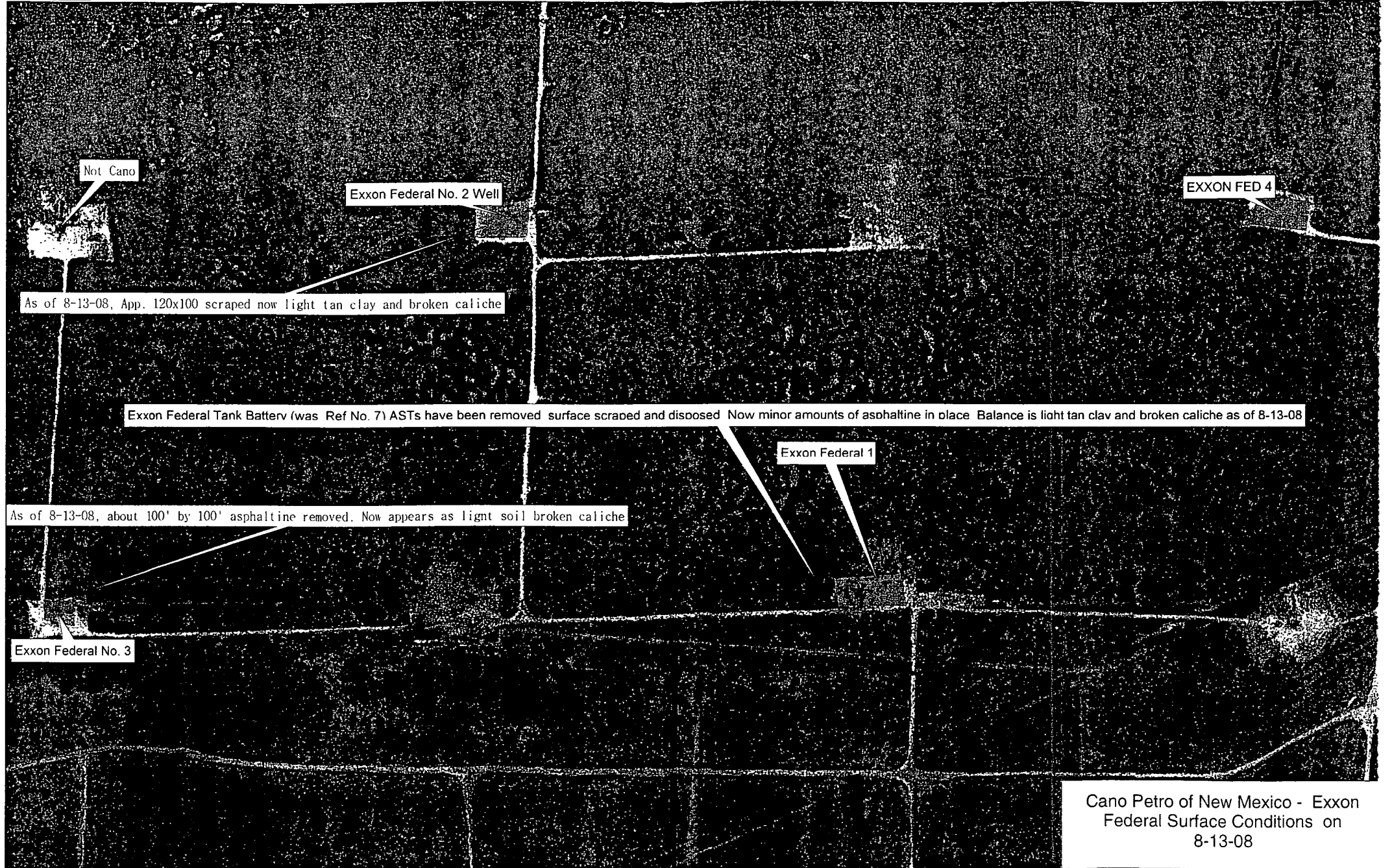
Conditions of approval, if any, are attached. Approval of this notice does not warrant or certify that the applicant holds legal or equitable title to those rights in the subject lease which would entitle the applicant to conduct operations thereon.

Office

Title 18 U.S.C. Section 1001 and Title 43 U.S.C. Section 1212, make it a crime for any person knowingly and willfully to make to any department or agency of the United States any false, fictitious or fraudulent statement or representation as to any matter within its jurisdiction.

(Instructions on page 2)

K



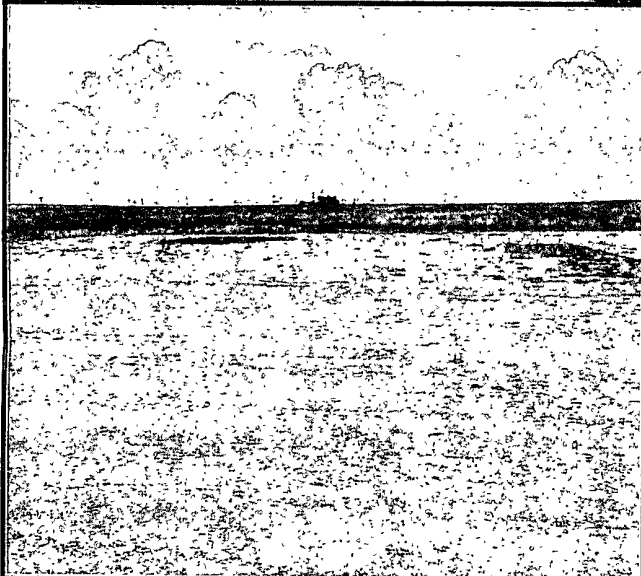
Cano Petro of New Mexico Exxon Federal Lease – Tom Tom Field

The pictures below were taken on August 13, 2008. A picture of Exxon Federal Well No. 4 is not available.



Exxon Federal Tank Battery and Well  
No. 1

August 13, 2008



Exxon Federal Well No. 2 location

August 13, 2008

Cano Petro of New Mexico Exxon Federal Lease – Tom Tom Field

The pictures below were taken on August 13, 2008. A picture of Exxon Federal Well No. 4 is not available.



Exxon Federal Well No. 3 Location

August 13, 2008

**GANDY-MARLEY, INC.**P. O. Box 1658  
Roswell, NM 88202  
Office (575) 347-0434  
Fax (575) 347-0435

NO 25681

LEASE OPERATOR/SHIPPER/COMPANY CANDYLEASE NAME EXXON FLD #1TRANSPORTER COMPANY GARCIATIME 9:36 AM/PMDATE 07-28-08 VEHICLE NO. 14 DRIVER NO.

CHARGE TO

## TYPE OF MATERIAL

OCD

☐ Other Material ☒ Contaminated soil ☐ C-117 No. \_\_\_\_\_☐ BS&W content \_\_\_\_\_Description oilVOLUME OF MATERIAL [ ] YARDS 20 : CELL# LF : [ ]

AS A CONDITION TO GANDY-MARLEY, INC.'S ACCEPTANCE OF THE MATERIALS SHIPPED WITH THIS JOB TICKET, OPERATOR/SHIPPER REPRESENTS AND WARRANTS THAT THE WASTE MATERIAL SHIPPED HEREWITH IS MATERIAL EXEMPT FROM THE RESOURCE, CONSERVATION AND RECOVERY ACT OF 1976, AS AMENDED FROM TIME TO TIME, 40 U.S.C. §6901, et seq., THE NM HEALTH AND SAF. CODES, §361.001, et seq., AND REGULATIONS RELATED THERETO, BY VIRTUE OF THE EXEMPTION AFFORDED CONTAMINATED SOILS AND OTHER WASTE ASSOCIATED WITH THE EXPLO- RATION, DEVELOPMENT OR PRODUCTION OF CRUDE OIL OR NATURAL GAS OR GEOTHERMAL ENERGY.

ALSO AS A CONDITION TO GANDY-MARLEY, INC.'S ACCEPTANCE OF THE MATERIALS SHIPPED WITH THIS JOB TICKET, TRANSPORTER REPRESENTS AND WARRANTS THAT ONLY THE MATERIAL DELIVERED BY OPERATOR/SHIPPER TO TRANSPORTER IS NOW DELIVERED BY TRANSPORTER TO GANDY-MARLEY, INC.'S FACILITY FOR DISPOSAL.

THIS WILL CERTIFY that the above Transporter loaded the material represented by this Transporter Statement at the above described location, and that it was tendered by the above described shipper. This will certify that no additional materials were added to this load, and that the material was delivered without incident.

DRIVER Adam J. GarciaFACILITY REPRESENTATIVE J. T. T.

White - GMI

Canary - Shipper

Pink - GMI

Gold - Transporter

Superior Printing Service, Inc.

**GANDY-MARLEY, INC.**P. O. Box 1658  
Roswell, NM 88202  
Office (575) 347-0434  
Fax (575) 347-0435

NO 25685

LEASE OPERATOR/SHIPPER/COMPANY CANDYLEASE NAME EXXON FLD #1TRANSPORTER COMPANY GARCIATIME 12:20 AM/PMDATE 07-28-08 VEHICLE NO. 14 DRIVER NO.

CHARGE TO

## TYPE OF MATERIAL

OCD

☐ Other Material ☒ Contaminated soil ☐ C-117 No. \_\_\_\_\_☐ BS&W content \_\_\_\_\_Description oilVOLUME OF MATERIAL [ ] YARDS 20 : CELL# LF : [ ]

AS A CONDITION TO GANDY-MARLEY, INC.'S ACCEPTANCE OF THE MATERIALS SHIPPED WITH THIS JOB TICKET, OPERATOR/SHIPPER REPRESENTS AND WARRANTS THAT THE WASTE MATERIAL SHIPPED HEREWITH IS MATERIAL EXEMPT FROM THE RESOURCE, CONSERVATION AND RECOVERY ACT OF 1976, AS AMENDED FROM TIME TO TIME, 40 U.S.C. §6901, et seq., THE NM HEALTH AND SAF. CODES, §361.001, et seq., AND REGULATIONS RELATED THERETO, BY VIRTUE OF THE EXEMPTION AFFORDED CONTAMINATED SOILS AND OTHER WASTE ASSOCIATED WITH THE EXPLO- RATION, DEVELOPMENT OR PRODUCTION OF CRUDE OIL OR NATURAL GAS OR GEOTHERMAL ENERGY.

ALSO AS A CONDITION TO GANDY-MARLEY, INC.'S ACCEPTANCE OF THE MATERIALS SHIPPED WITH THIS JOB TICKET, TRANSPORTER REPRESENTS AND WARRANTS THAT ONLY THE MATERIAL DELIVERED BY OPERATOR/SHIPPER TO TRANSPORTER IS NOW DELIVERED BY TRANSPORTER TO GANDY-MARLEY, INC.'S FACILITY FOR DISPOSAL.

THIS WILL CERTIFY that the above Transporter loaded the material represented by this Transporter Statement at the above described location, and that it was tendered by the above described shipper. This will certify that no additional materials were added to this load, and that the material was delivered without incident.

DRIVER Adam J. GarciaFACILITY REPRESENTATIVE J. T. T.

White - GMI

Canary - Shipper

Pink - GMI

Gold - Transporter

Superior Printing Service, Inc.

<b>GANDY-MARLEY, INC.</b> P. O. Box 1658 Roswell, NM 88202 Office (575) 347-0434 Fax (575) 347-0435		25622
LEASE OPERATOR/SHIPPER/COMPANY <u>CANO</u>		
LEASE NAME <u>EXXON FED #1</u>		
TRANSPORTER COMPANY <u>SHACIA</u>		TIME <u>12:20</u> AM/PM
DATE <u>07-29-08</u>	VEHICLE NO. <u>14</u>	DRIVER NO. _____
CHARGE TO _____		
TYPE OF MATERIAL		
OCD <span style="float: right;">84</span>		
<input type="checkbox"/> Other Material	<input checked="" type="checkbox"/> Contaminated soil	<input type="checkbox"/> C-117 No. _____
<input type="checkbox"/> BS&W content _____		
Description <u>oil</u>		
VOLUME OF MATERIAL [ ] YARDS <u>20</u> : CELL# <u>LF</u> : [ ]		
<p>AS A CONDITION TO GANDY-MARLEY, INC.'S ACCEPTANCE OF THE MATERIALS SHIPPED WITH THIS JOB TICKET, OPERATOR/SHIPPER REPRESENTS AND WARRANTS THAT THE WASTE MATERIAL SHIPPED HERewith IS MATERIAL EXEMPT FROM THE RESOURCE, CONSERVATION AND RECOVERY ACT OF 1976, AS AMENDED FROM TIME TO TIME, 40 U.S.C. §6901, et seq., THE NM HEALTH AND SAF. CODES, §361.001, et seq., AND REGULATIONS RELATED THERETO, BY VIRTUE OF THE EXEMPTION AFFORDED CONTAMINATED SOILS AND OTHER WASTE ASSOCIATED WITH THE EXPLO- RATION, DEVELOPMENT OR PRODUCTION OF CRUDE OIL OR NATURAL GAS OR GEOTHERMAL ENERGY.</p> <p>ALSO AS A CONDITION TO GANDY-MARLEY, INC.'S ACCEPTANCE OF THE MATERIALS SHIPPED WITH THIS JOB TICKET, TRANSPORTER REPRESENTS AND WARRANTS THAT ONLY THE MATERIAL DELIVERED BY OPERATOR/SHIPPER TO TRANSPORTER IS NOW DELIVERED BY TRANSPORTER TO GANDY-MARLEY, INC.'S FACILITY FOR DISPOSAL.</p> <p>THIS WILL CERTIFY that the above Transporter loaded the material represented by this Transporter Statement at the above described location, and that it was tendered by the above described shipper. This will certify that no additional materials were added to this load, and that the material was delivered without incident.</p>		
DRIVER <u>Michael J. Brown</u>		
FACILITY REPRESENTATIVE <u>J. T. Turner</u>		
White - GMI	Canary - Shipper	Pink - GMI
Gold - Transporter		

Superior Printing Service, Inc.

<b>GANDY-MARLEY, INC.</b> P. O. Box 1658 Roswell, NM 88202 Office (575) 347-0434 Fax (575) 347-0435		25666
LEASE OPERATOR/SHIPPER/COMPANY <u>CANO</u>		
LEASE NAME <u>EXXON FED #2</u>		
TRANSPORTER COMPANY <u>SHACIA</u>		TIME <u>1:00</u> AM/PM
DATE <u>07-30-08</u>	VEHICLE NO. <u>14</u>	DRIVER NO. _____
CHARGE TO _____		
TYPE OF MATERIAL		
OCD		
<input type="checkbox"/> Other Material	<input checked="" type="checkbox"/> Contaminated soil	<input type="checkbox"/> C-117 No. _____
<input type="checkbox"/> BS&W content _____		
Description <u>oil</u>		
VOLUME OF MATERIAL [ ] YARDS <u>20</u> : CELL# <u>LF</u> : [ ]		
<p>AS A CONDITION TO GANDY-MARLEY, INC.'S ACCEPTANCE OF THE MATERIALS SHIPPED WITH THIS JOB TICKET, OPERATOR/SHIPPER REPRESENTS AND WARRANTS THAT THE WASTE MATERIAL SHIPPED HERewith IS MATERIAL EXEMPT FROM THE RESOURCE, CONSERVATION AND RECOVERY ACT OF 1976, AS AMENDED FROM TIME TO TIME, 40 U.S.C. §6901, et seq., THE NM HEALTH AND SAF. CODES, §361.001, et seq., AND REGULATIONS RELATED THERETO, BY VIRTUE OF THE EXEMPTION AFFORDED CONTAMINATED SOILS AND OTHER WASTE ASSOCIATED WITH THE EXPLO- RATION, DEVELOPMENT OR PRODUCTION OF CRUDE OIL OR NATURAL GAS OR GEOTHERMAL ENERGY.</p> <p>ALSO AS A CONDITION TO GANDY-MARLEY, INC.'S ACCEPTANCE OF THE MATERIALS SHIPPED WITH THIS JOB TICKET, TRANSPORTER REPRESENTS AND WARRANTS THAT ONLY THE MATERIAL DELIVERED BY OPERATOR/SHIPPER TO TRANSPORTER IS NOW DELIVERED BY TRANSPORTER TO GANDY-MARLEY, INC.'S FACILITY FOR DISPOSAL.</p> <p>THIS WILL CERTIFY that the above Transporter loaded the material represented by this Transporter Statement at the above described location, and that it was tendered by the above described shipper. This will certify that no additional materials were added to this load, and that the material was delivered without incident.</p>		
DRIVER <u>Michael J. Brown</u>		
FACILITY REPRESENTATIVE <u>J. T. Turner</u>		
White - GMI	Canary - Shipper	Pink - GMI
Gold - Transporter		

Superior Printing Service, Inc.

<b>GANDY-MARLEY, INC.</b> P. O. Box 1658 Roswell, NM 88202 Office (575) 347-0434 Fax (575) 347-0435		NC 25756
LEASE OPERATOR/SHIPPER/COMPANY <u>CANO</u>		
LEASE NAME <u>EXXON FED #3</u>		
TRANSPORTER COMPANY <u>GARCIA</u>	TIME <u>1:50</u>	AM/PM <u></u>
DATE <u>07-31-08</u>	VEHICLE NO. <u>14</u>	DRIVER NO. <u></u>
CHARGE TO <u></u>		
TYPE OF MATERIAL OCD		
<input type="checkbox"/> Other Material <input checked="" type="checkbox"/> Contaminated soil <input type="checkbox"/> C-117 No. <u></u> <input type="checkbox"/> BS&W content <u></u>		
Description <u>oil</u>		
VOLUME OF MATERIAL [ ] YARDS <u>20</u> : CELL# <u>LF</u> : [ ]		
<p>AS A CONDITION TO GANDY-MARLEY, INC.'S ACCEPTANCE OF THE MATERIALS SHIPPED WITH THIS JOB TICKET, OPERATOR/SHIPPER REPRESENTS AND WARRANTS THAT THE WASTE MATERIAL SHIPPED HEREWITH IS MATERIAL EXEMPT FROM THE RESOURCE, CONSERVATION AND RECOVERY ACT OF 1976, AS AMENDED FROM TIME TO TIME, 40 U.S.C. §6901, et seq., THE NM HEALTH AND SAF. CODES, §361.001, et seq., AND REGULATIONS RELATED THERETO, BY VIRTUE OF THE EXEMPTION AFFORDED CONTAMINATED SOILS AND OTHER WASTE ASSOCIATED WITH THE EXPLO- RATION, DEVELOPMENT OR PRODUCTION OF CRUDE OIL OR NATURAL GAS OR GEOTHERMAL ENERGY.</p> <p>ALSO AS A CONDITION TO GANDY-MARLEY, INC.'S ACCEPTANCE OF THE MATERIALS SHIPPED WITH THIS JOB TICKET, TRANSPORTER REPRESENTS AND WARRANTS THAT ONLY THE MATERIAL DELIVERED BY OPERATOR/SHIPPER TO TRANSPORTER IS NOW DELIVERED BY TRANSPORTER TO GANDY-MARLEY, INC.'S FACILITY FOR DISPOSAL.</p> <p>THIS WILL CERTIFY that the above Transporter loaded the material represented by this Transporter Statement at the above described location, and that it was tendered by the above described shipper. This will certify that no additional materials were added to this load, and that the material was delivered without incident.</p>		
DRIVER <u>[Signature]</u>		
FACILITY REPRESENTATIVE <u>[Signature]</u>		
White - GMI     Canary - Shipper     Pink - GMI     Gold - Transporter		

Superior Printing Service, Inc.

<b>GANDY-MARLEY, INC.</b> P. O. Box 1658 Roswell, NM 88202 Office (575) 347-0434 Fax (575) 347-0435		NC 25801
LEASE OPERATOR/SHIPPER/COMPANY <u>CANO</u>		
LEASE NAME <u>EXXON FED #3</u>		
TRANSPORTER COMPANY <u>GARCIA</u>	TIME <u>1:13</u>	AM/PM <u></u>
DATE <u>08-01-08</u>	VEHICLE NO. <u>14</u>	DRIVER NO. <u></u>
CHARGE TO <u></u>		
TYPE OF MATERIAL OCD		
<input type="checkbox"/> Other Material <input checked="" type="checkbox"/> Contaminated soil <input type="checkbox"/> C-117 No. <u></u> <input type="checkbox"/> BS&W content <u></u>		
Description <u>oil</u>		
VOLUME OF MATERIAL [ ] YARDS <u>20</u> : CELL# <u>LF</u> : [ ]		
<p>AS A CONDITION TO GANDY-MARLEY, INC.'S ACCEPTANCE OF THE MATERIALS SHIPPED WITH THIS JOB TICKET, OPERATOR/SHIPPER REPRESENTS AND WARRANTS THAT THE WASTE MATERIAL SHIPPED HEREWITH IS MATERIAL EXEMPT FROM THE RESOURCE, CONSERVATION AND RECOVERY ACT OF 1976, AS AMENDED FROM TIME TO TIME, 40 U.S.C. §6901, et seq., THE NM HEALTH AND SAF. CODES, §361.001, et seq., AND REGULATIONS RELATED THERETO, BY VIRTUE OF THE EXEMPTION AFFORDED CONTAMINATED SOILS AND OTHER WASTE ASSOCIATED WITH THE EXPLO- RATION, DEVELOPMENT OR PRODUCTION OF CRUDE OIL OR NATURAL GAS OR GEOTHERMAL ENERGY.</p> <p>ALSO AS A CONDITION TO GANDY-MARLEY, INC.'S ACCEPTANCE OF THE MATERIALS SHIPPED WITH THIS JOB TICKET, TRANSPORTER REPRESENTS AND WARRANTS THAT ONLY THE MATERIAL DELIVERED BY OPERATOR/SHIPPER TO TRANSPORTER IS NOW DELIVERED BY TRANSPORTER TO GANDY-MARLEY, INC.'S FACILITY FOR DISPOSAL.</p> <p>THIS WILL CERTIFY that the above Transporter loaded the material represented by this Transporter Statement at the above described location, and that it was tendered by the above described shipper. This will certify that no additional materials were added to this load, and that the material was delivered without incident.</p>		
DRIVER <u>[Signature]</u>		
FACILITY REPRESENTATIVE <u>[Signature]</u>		
White - GMI     Canary - Shipper     Pink - GMI     Gold - Transporter		

Superior Printing Service, Inc.

**GANDY-MARLEY, INC.**

P. O. Box 1658  
Roswell, NM 88202  
Office (575) 347-0434  
Fax (575) 347-0435

NC 25694

LEASE OPERATOR/SHIPPER/COMPANY CANO  
LEASE NAME EXXON FLD #1  
TRANSPORTER COMPANY QUEZ-DA TIME 1:10 AM/PM  
DATE 07-25-08 VEHICLE NO. 5 DRIVER NO. \_\_\_\_\_  
CHARGE TO \_\_\_\_\_

**TYPE OF MATERIAL**  
**OCD**

☐ Other Material ☒ Contaminated soil ☐ C-117 No. \_\_\_\_\_  
☐ BS&W content \_\_\_\_\_  
Description oil

VOLUME OF MATERIAL ☐ YARDS 20 : CELL# LF : ☐

AS A CONDITION TO GANDY-MARLEY, INC.'S ACCEPTANCE OF THE MATERIALS SHIPPED WITH THIS JOB TICKET, OPERATOR/SHIPPER REPRESENTS AND WARRANTS THAT THE WASTE MATERIAL SHIPPED HERewith IS MATERIAL EXEMPT FROM THE RESOURCE, CONSERVATION AND RECOVERY ACT, OF 1976, AS AMENDED FROM TIME TO TIME, 40 U.S.C. §6901, et seq., THE NM HEALTH AND SAF. CODES, §361.001, et seq., AND REGULATIONS RELATED THERETO, BY VIRTUE OF THE EXEMPTION AFFORDED CONTAMINATED SOILS AND OTHER WASTE ASSOCIATED WITH THE EXPLO- RATION, DEVELOPMENT OR PRODUCTION OF CRUDE OIL OR NATURAL GAS OR GEOTHERMAL ENERGY.

ALSO AS A CONDITION TO GANDY-MARLEY, INC.'S ACCEPTANCE OF THE MATERIALS SHIPPED WITH THIS JOB TICKET, TRANSPORTER REPRESENTS AND WARRANTS THAT ONLY THE MATERIAL DELIVERED BY OPERATOR/SHIPPER TO TRANSPORTER IS NOW DELIVERED BY TRANSPORTER TO GANDY-MARLEY, INC.'S FACILITY FOR DISPOSAL.

THIS WILL CERTIFY that the above Transporter loaded the material represented by this Transporter Statement at the above described location, and that it was tendered by the above described shipper. This will certify that no additional materials were added to this load, and that the material was delivered without incident.

DRIVER [Signature]  
FACILITY REPRESENTATIVE [Signature]

White - GMI

Grey - Shipper

Pink - GMI

Gold - Transporter

Superior Printing Service, Inc.