
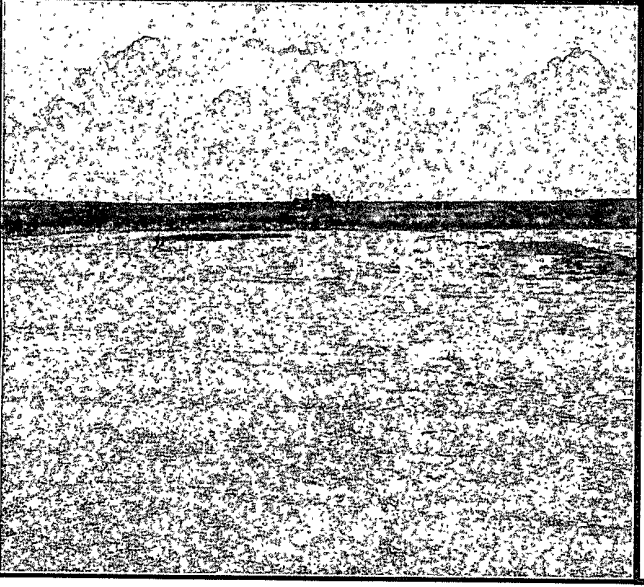


Cano Petro of New Mexico - Exxon
Federal Surface Conditions on
8-13-08

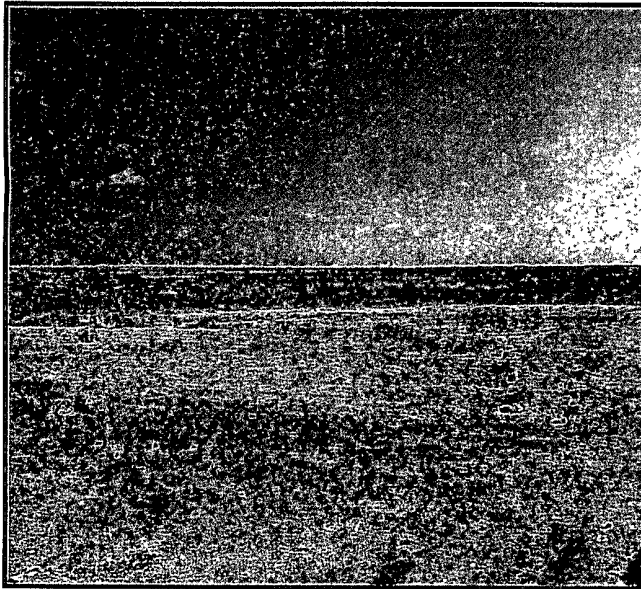
Cano Petro of New Mexico Exxon Federal Lease – Tom Tom Field

The pictures below were taken on August 13, 2008. A picture of Exxon Federal Well No. 4 is not available.

 A black and white photograph showing a large, dark, rectangular structure, likely a tank battery, situated in a flat, open field. In the background, there are rolling hills or mountains under a clear sky. A single vertical pole or wellhead is visible on the right side of the structure.	Exxon Federal Tank Battery and Well No. 1 August 13, 2008
 A black and white photograph showing a similar landscape to the one above, with a flat field and rolling hills in the background. A small, dark structure, presumably Well No. 2, is visible in the distance, centered horizontally.	Exxon Federal Well No. 2 location August 13, 2008

Cano Petro of New Mexico Exxon Federal Lease – Tom Tom Field

The pictures below were taken on August 13, 2008. A picture of Exxon Federal Well No. 4 is not available.



Exxon Federal Well No. 3 Location

August 13, 2008

GANDY-MARLEY, INC. P. O. Box 1658 Roswell, NM 88202 Office (575) 347-0434 Fax (575) 347-0435		12 25681
LEASE OPERATOR/SHIPPER/COMPANY <u>CANO</u>		
LEASE NAME <u>EXXON FLD #1</u>		
TRANSPORTER COMPANY <u>GARCIA</u>		TIME <u>9:36</u> AM/PM
DATE <u>07-28-08</u>	VEHICLE NO. <u>14</u>	DRIVER NO.
CHARGE TO		
TYPE OF MATERIAL		
OCD		
<input type="checkbox"/> Other Material	<input checked="" type="checkbox"/> Contaminated soil	<input type="checkbox"/> C-117 No. _____
<input type="checkbox"/> BS&W content _____		
Description <u>oil</u>		
VOLUME OF MATERIAL [] YARDS <u>20</u> : CELL# <u>LF</u> : []		
<p>AS A CONDITION TO GANDY-MARLEY, INC.'S ACCEPTANCE OF THE MATERIALS SHIPPED WITH THIS JOB TICKET, OPERATOR/SHIPPER REPRESENTS AND WARRANTS THAT THE WASTE MATERIAL SHIPPED HERewith IS MATERIAL EXEMPT FROM THE RESOURCE, CONSERVATION AND RECOVERY ACT OF 1976, AS AMENDED FROM TIME TO TIME, 40 U.S.C. §6901, et seq., THE NM HEALTH AND SAF. CODES, §361.001, et seq., AND REGULATIONS RELATED THERETO, BY VIRTUE OF THE EXEMPTION AFFORDED CONTAMINATED SOILS AND OTHER WASTE ASSOCIATED WITH THE EXPLO- RATION, DEVELOPMENT OR PRODUCTION OF CRUDE OIL OR NATURAL GAS OR GEOTHERMAL ENERGY.</p> <p>ALSO AS A CONDITION TO GANDY-MARLEY, INC.'S ACCEPTANCE OF THE MATERIALS SHIPPED WITH THIS JOB TICKET, TRANSPORTER REPRESENTS AND WARRANTS THAT ONLY THE MATERIAL DELIVERED BY OPERATOR/SHIPPER TO TRANSPORTER IS NOW DELIVERED BY TRANSPORTER TO GANDY-MARLEY, INC.'S FACILITY FOR DISPOSAL.</p> <p>THIS WILL CERTIFY that the above Transporter loaded the material represented by this Transporter Statement at the above described location, and that it was tendered by the above described shipper. This will certify that no additional materials were added to this load, and that the material was delivered without incident.</p>		
DRIVER <u>Heaven J. Brown</u>		
FACILITY REPRESENTATIVE <u>J. T. Teton</u>		
White - GMI	Canary - Shipper	Pink - GMI
Gold - Transporter		

Superior Printing Service, Inc.

GANDY-MARLEY, INC. P. O. Box 1658 Roswell, NM 88202 Office (575) 347-0434 Fax (575) 347-0435		12 25685
LEASE OPERATOR/SHIPPER/COMPANY <u>CANO</u>		
LEASE NAME <u>EXXON FLD #1</u>		
TRANSPORTER COMPANY <u>GARCIA</u>		TIME <u>12:20</u> AM/PM
DATE <u>07-28-08</u>	VEHICLE NO. <u>14</u>	DRIVER NO.
CHARGE TO		
TYPE OF MATERIAL		
OCD		
<input type="checkbox"/> Other Material	<input checked="" type="checkbox"/> Contaminated soil	<input type="checkbox"/> C-117 No. _____
<input type="checkbox"/> BS&W content _____		
Description <u>oil</u>		
VOLUME OF MATERIAL [] YARDS <u>20</u> : CELL# <u>LF</u> : []		
<p>AS A CONDITION TO GANDY-MARLEY, INC.'S ACCEPTANCE OF THE MATERIALS SHIPPED WITH THIS JOB TICKET, OPERATOR/SHIPPER REPRESENTS AND WARRANTS THAT THE WASTE MATERIAL SHIPPED HERewith IS MATERIAL EXEMPT FROM THE RESOURCE, CONSERVATION AND RECOVERY ACT OF 1976, AS AMENDED FROM TIME TO TIME, 40 U.S.C. §6901, et seq., THE NM HEALTH AND SAF. CODES, §361.001, et seq., AND REGULATIONS RELATED THERETO, BY VIRTUE OF THE EXEMPTION AFFORDED CONTAMINATED SOILS AND OTHER WASTE ASSOCIATED WITH THE EXPLO- RATION, DEVELOPMENT OR PRODUCTION OF CRUDE OIL OR NATURAL GAS OR GEOTHERMAL ENERGY.</p> <p>ALSO AS A CONDITION TO GANDY-MARLEY, INC.'S ACCEPTANCE OF THE MATERIALS SHIPPED WITH THIS JOB TICKET, TRANSPORTER REPRESENTS AND WARRANTS THAT ONLY THE MATERIAL DELIVERED BY OPERATOR/SHIPPER TO TRANSPORTER IS NOW DELIVERED BY TRANSPORTER TO GANDY-MARLEY, INC.'S FACILITY FOR DISPOSAL.</p> <p>THIS WILL CERTIFY that the above Transporter loaded the material represented by this Transporter Statement at the above described location, and that it was tendered by the above described shipper. This will certify that no additional materials were added to this load, and that the material was delivered without incident.</p>		
DRIVER <u>Heaven J. Brown</u>		
FACILITY REPRESENTATIVE <u>J. T. Teton</u>		
White - GMI	Canary - Shipper	Pink - GMI
Gold - Transporter		

Superior Printing Service, Inc.

GANDY-MARLEY, INC. P. O. Box 1658 Roswell, NM 88202 Office (575) 347-0434 Fax (575) 347-0435		NO 25622
LEASE OPERATOR/SHIPPER/COMPANY <u>CANO</u>		
LEASE NAME <u>EXXON FED #1</u>		
TRANSPORTER COMPANY <u>SHREK</u>		TIME <u>12:20</u> AM/PM
DATE <u>07-29-08</u>	VEHICLE NO. <u>14</u>	DRIVER NO. _____
CHARGE TO _____		
TYPE OF MATERIAL		
OCD 84		
<input type="checkbox"/> Other Material	<input checked="" type="checkbox"/> Contaminated soil	<input type="checkbox"/> C-117 No. _____
<input type="checkbox"/> BS&W content _____		
Description <u>oil</u>		
VOLUME OF MATERIAL [] YARDS <u>20</u> : CELL# <u>LF</u> : []		
<p>AS A CONDITION TO GANDY-MARLEY, INC.'S ACCEPTANCE OF THE MATERIALS SHIPPED WITH THIS JOB TICKET, OPERATOR/SHIPPER REPRESENTS AND WARRANTS THAT THE WASTE MATERIAL SHIPPED HEREWITH IS MATERIAL EXEMPT FROM THE RESOURCE, CONSERVATION AND RECOVERY ACT OF 1976, AS AMENDED FROM TIME TO TIME, 40 U.S.C. §6901, et seq., THE NM HEALTH AND SAF. CODES, §381.001, et seq., AND REGULATIONS RELATED THERETO, BY VIRTUE OF THE EXEMPTION AFFORDED CONTAMINATED SOILS AND OTHER WASTE ASSOCIATED WITH THE EXPLO- RATION, DEVELOPMENT OR PRODUCTION OF CRUDE OIL OR NATURAL GAS OR GEOTHERMAL ENERGY.</p> <p>ALSO AS A CONDITION TO GANDY-MARLEY, INC.'S ACCEPTANCE OF THE MATERIALS SHIPPED WITH THIS JOB TICKET, TRANSPORTER REPRESENTS AND WARRANTS THAT ONLY THE MATERIAL DELIVERED BY OPERATOR/SHIPPER TO TRANSPORTER IS NOW DELIVERED BY TRANSPORTER TO GANDY-MARLEY, INC.'S FACILITY FOR DISPOSAL.</p> <p>THIS WILL CERTIFY that the above Transporter loaded the material represented by this Transporter Statement at the above described location, and that it was tendered by the above described shipper. This will certify that no additional materials were added to this load, and that the material was delivered without incident.</p>		
DRIVER <u>Michael S. [Signature]</u>		
FACILITY REPRESENTATIVE <u>[Signature]</u>		
<small>White - GMF Canary - Shipper Pink - GMF Gold - Transporter</small>		

Superior Printing Service, Inc.

GANDY-MARLEY, INC. P. O. Box 1658 Roswell, NM 88202 Office (575) 347-0434 Fax (575) 347-0435		NO 25666
LEASE OPERATOR/SHIPPER/COMPANY <u>CANO</u>		
LEASE NAME <u>EXXON FED #2</u>		
TRANSPORTER COMPANY <u>SHREK</u>		TIME <u>1:00</u> AM/PM
DATE <u>07-30-08</u>	VEHICLE NO. <u>14</u>	DRIVER NO. _____
CHARGE TO _____		
TYPE OF MATERIAL		
OCD		
<input type="checkbox"/> Other Material	<input checked="" type="checkbox"/> Contaminated soil	<input type="checkbox"/> C-117 No. _____
<input type="checkbox"/> BS&W content _____		
Description <u>oil</u>		
VOLUME OF MATERIAL [] YARDS <u>20</u> : CELL# <u>LF</u> : []		
<p>AS A CONDITION TO GANDY-MARLEY, INC.'S ACCEPTANCE OF THE MATERIALS SHIPPED WITH THIS JOB TICKET, OPERATOR/SHIPPER REPRESENTS AND WARRANTS THAT THE WASTE MATERIAL SHIPPED HEREWITH IS MATERIAL EXEMPT FROM THE RESOURCE, CONSERVATION AND RECOVERY ACT OF 1976, AS AMENDED FROM TIME TO TIME, 40 U.S.C. §6901, et seq., THE NM HEALTH AND SAF. CODES, §381.001, et seq., AND REGULATIONS RELATED THERETO, BY VIRTUE OF THE EXEMPTION AFFORDED CONTAMINATED SOILS AND OTHER WASTE ASSOCIATED WITH THE EXPLO- RATION, DEVELOPMENT OR PRODUCTION OF CRUDE OIL OR NATURAL GAS OR GEOTHERMAL ENERGY.</p> <p>ALSO AS A CONDITION TO GANDY-MARLEY, INC.'S ACCEPTANCE OF THE MATERIALS SHIPPED WITH THIS JOB TICKET, TRANSPORTER REPRESENTS AND WARRANTS THAT ONLY THE MATERIAL DELIVERED BY OPERATOR/SHIPPER TO TRANSPORTER IS NOW DELIVERED BY TRANSPORTER TO GANDY-MARLEY, INC.'S FACILITY FOR DISPOSAL.</p> <p>THIS WILL CERTIFY that the above Transporter loaded the material represented by this Transporter Statement at the above described location, and that it was tendered by the above described shipper. This will certify that no additional materials were added to this load, and that the material was delivered without incident.</p>		
DRIVER <u>Michael S. [Signature]</u>		
FACILITY REPRESENTATIVE <u>[Signature]</u>		
<small>White - GMF Canary - Shipper Pink - GMF Gold - Transporter</small>		

Superior Printing Service, Inc.

GANDY-MARLEY, INC. P. O. Box 1658 Roswell, NM 88202 Office (575) 347-0434 Fax (575) 347-0435		NC 25756
LEASE OPERATOR/SHIPPER/COMPANY <u>CANDY</u>		
LEASE NAME <u>EXXON FED #3</u>		
TRANSPORTER COMPANY <u>CANDY</u>	TIME <u>1:50</u>	AM/PM
DATE <u>07-31-07</u>	VEHICLE NO. <u>14</u>	DRIVER NO. _____
CHARGE TO _____		
TYPE OF MATERIAL		
OCD		
<input type="checkbox"/> Other Material	<input checked="" type="checkbox"/> Contaminated soil	<input type="checkbox"/> C-117 No. _____
<input type="checkbox"/> BS&W content _____		
Description <u>oil</u>		
VOLUME OF MATERIAL [] YARDS <u>20</u> : CELL# <u>LF</u> : []		
<p>AS A CONDITION TO GANDY-MARLEY, INC.'S ACCEPTANCE OF THE MATERIALS SHIPPED WITH THIS JOB TICKET, OPERATOR/SHIPPER REPRESENTS AND WARRANTS THAT THE WASTE MATERIAL SHIPPED HERewith IS MATERIAL EXEMPT FROM THE RESOURCE, CONSERVATION AND RECOVERY ACT OF 1976, AS AMENDED FROM TIME TO TIME, 40 U.S.C. §6901, et seq., THE NM HEALTH AND SAF. CODES, §361.001, et seq., AND REGULATIONS RELATED THERETO, BY VIRTUE OF THE EXEMPTION AFFORDED CONTAMINATED SOILS AND OTHER WASTE ASSOCIATED WITH THE EXPLO- RATION, DEVELOPMENT OR PRODUCTION OF CRUDE OIL OR NATURAL GAS OR GEOTHERMAL ENERGY.</p> <p>ALSO AS A CONDITION TO GANDY-MARLEY, INC.'S ACCEPTANCE OF THE MATERIALS SHIPPED WITH THIS JOB TICKET, TRANSPORTER REPRESENTS AND WARRANTS THAT ONLY THE MATERIAL DELIVERED BY OPERATOR/SHIPPER TO TRANSPORTER IS NOW DELIVERED BY TRANSPORTER TO GANDY-MARLEY, INC.'S FACILITY FOR DISPOSAL.</p> <p>THIS WILL CERTIFY that the above Transporter loaded the material represented by this Transporter Statement at the above described location, and that it was tendered by the above described shipper. This will certify that no additional materials were added to this load, and that the material was delivered without incident.</p>		
DRIVER <u>[Signature]</u>		
FACILITY REPRESENTATIVE <u>[Signature]</u>		
White - GM Canary - Shipper Pink - GM Gold - Transporter		

Superior Printing Service, Inc.

GANDY-MARLEY, INC. P. O. Box 1658 Roswell, NM 88202 Office (575) 347-0434 Fax (575) 347-0435		NC 25801
LEASE OPERATOR/SHIPPER/COMPANY <u>CANDY</u>		
LEASE NAME <u>EXXON FED #3</u>		
TRANSPORTER COMPANY <u>CANDY</u>	TIME <u>1:19</u>	AM/PM
DATE <u>08-01-08</u>	VEHICLE NO. <u>14</u>	DRIVER NO. _____
CHARGE TO _____		
TYPE OF MATERIAL		
OCD		
<input type="checkbox"/> Other Material	<input checked="" type="checkbox"/> Contaminated soil	<input type="checkbox"/> C-117 No. _____
<input type="checkbox"/> BS&W content _____		
Description <u>oil</u>		
VOLUME OF MATERIAL [] YARDS <u>20</u> : CELL# <u>LF</u> : []		
<p>AS A CONDITION TO GANDY-MARLEY, INC.'S ACCEPTANCE OF THE MATERIALS SHIPPED WITH THIS JOB TICKET, OPERATOR/SHIPPER REPRESENTS AND WARRANTS THAT THE WASTE MATERIAL SHIPPED HERewith IS MATERIAL EXEMPT FROM THE RESOURCE, CONSERVATION AND RECOVERY ACT OF 1976, AS AMENDED FROM TIME TO TIME, 40 U.S.C. §6901, et seq., THE NM HEALTH AND SAF. CODES, §361.001, et seq., AND REGULATIONS RELATED THERETO, BY VIRTUE OF THE EXEMPTION AFFORDED CONTAMINATED SOILS AND OTHER WASTE ASSOCIATED WITH THE EXPLO- RATION, DEVELOPMENT OR PRODUCTION OF CRUDE OIL OR NATURAL GAS OR GEOTHERMAL ENERGY.</p> <p>ALSO AS A CONDITION TO GANDY-MARLEY, INC.'S ACCEPTANCE OF THE MATERIALS SHIPPED WITH THIS JOB TICKET, TRANSPORTER REPRESENTS AND WARRANTS THAT ONLY THE MATERIAL DELIVERED BY OPERATOR/SHIPPER TO TRANSPORTER IS NOW DELIVERED BY TRANSPORTER TO GANDY-MARLEY, INC.'S FACILITY FOR DISPOSAL.</p> <p>THIS WILL CERTIFY that the above Transporter loaded the material represented by this Transporter Statement at the above described location, and that it was tendered by the above described shipper. This will certify that no additional materials were added to this load, and that the material was delivered without incident.</p>		
DRIVER <u>[Signature]</u>		
FACILITY REPRESENTATIVE <u>[Signature]</u>		
White - GM Canary - Shipper Pink - GM Gold - Transporter		

Superior Printing Service, Inc.

GANDY-MARLEY, INC.

P. O. Box 1658
Roswell, NM 88202
Office (575) 347-0434
Fax (575) 347-0435

NC 25694LEASE OPERATOR/SHIPPER/COMPANY C.F.I.N.O.LEASE NAME EXXON Fed #1TRANSPORTER COMPANY QUEZADA TIME 1:10 AM/PMDATE 07-28-08 VEHICLE NO. 5 DRIVER NO.

CHARGE TO

TYPE OF MATERIAL**OCD**☐ Other Material ☒ Contaminated soil ☐ C-117 No. _____☐ BS&W content _____Description oilVOLUME OF MATERIAL [] YARDS 20 : CELL# LE : []

AS A CONDITION TO GANDY-MARLEY, INC.'S ACCEPTANCE OF THE MATERIALS SHIPPED WITH THIS JOB TICKET, OPERATOR/SHIPPER REPRESENTS AND WARRANTS THAT THE WASTE MATERIAL SHIPPED HERewith IS MATERIAL EXEMPT FROM THE RESOURCE, CONSERVATION AND RECOVERY ACT OF 1976, AS AMENDED FROM TIME TO TIME, 40 U.S.C. §6901, et seq., THE NM HEALTH AND SAF. CODES, §361.001, et seq., AND REGULATIONS RELATED THERETO, BY VIRTUE OF THE EXEMPTION AFFORDED CONTAMINATED SOILS AND OTHER WASTE ASSOCIATED WITH THE EXPLO- RATION, DEVELOPMENT OR PRODUCTION OF CRUDE OIL OR NATURAL GAS OR GEOTHERMAL ENERGY.

ALSO AS A CONDITION TO GANDY-MARLEY, INC.'S ACCEPTANCE OF THE MATERIALS SHIPPED WITH THIS JOB TICKET, TRANSPORTER REPRESENTS AND WARRANTS THAT ONLY THE MATERIAL DELIVERED BY OPERATOR/SHIPPER TO TRANSPORTER IS NOW DELIVERED BY TRANSPORTER TO GANDY-MARLEY, INC.'S FACILITY FOR DISPOSAL.

THIS WILL CERTIFY that the above Transporter loaded the material represented by this Transporter Statement at the above described location, and that it was tendered by the above described shipper. This will certify that no additional materials were added to this load, and that the material was delivered without incident.

DRIVER [Signature]FACILITY REPRESENTATIVE [Signature]

White - GVE

Capacity - Shipper

Pink - GMI

Gold - Transporter

Superior Printing Service, Inc.