

RECEIVED

State of New Mexico

Pit Plat

ENCH DR., ROBBES, NM 88240

Energy, Minerals and Natural Resources Department

Form C-102

Revised October 12, 2005

Submit to Appropriate District Office

State Lease - 4 Copies

Fee Lease - 3 Copies

DISTRICT II

4. GRAND AVENUE, ARTESIA, NM 88210

DISTRICT III

1000 Rio Brazos Rd., Artesia, NM 88210

SEP 12 2008

OIL CONSERVATION DIVISION

1820 SOUTH ST. FRANCIS DR.

Santa Fe, New Mexico 87505

HOBBS OIL

Pit Plat

DISTRICT IV

1220 S. ST. FRANCIS DR., SANTA FE, NM 87505

WELL LOCATION AND ACREAGE DEDICATION PLAT

☐ AMENDED REPORT

API Number		Pool Code	Pool Name JABALINA-BONE SPRING
Property Code	Property Name MADERA 25 FEDERAL		Well Number 2
OGRID No. 226678	Operator Name GREAT WESTERN DRILLING, CO.		Elevation 3191'

Surface Location

UL or lot No.	Section	Township	Range	Lot Idn	Feet from the	North/South line	Feet from the	East/West line	County
A	25	26-S	34-E		660	NORTH	660	EAST	LEA

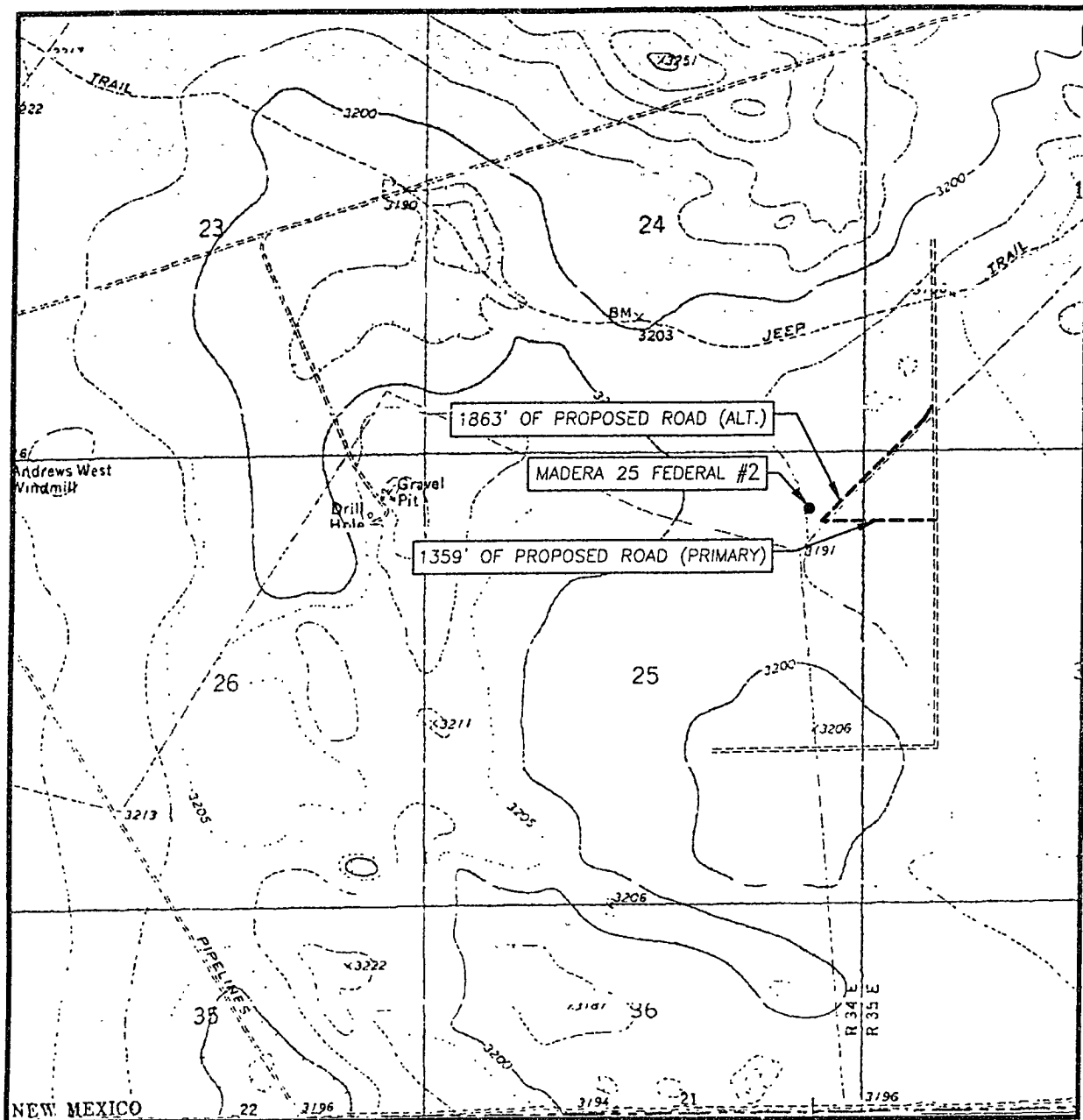
Bottom Hole Location If Different From Surface

UL or lot No.	Section	Township	Range	Lot Idn	Feet from the	North/South line	Feet from the	East/West line	County
Dedicated Acres 40	Joint or Infill	Consolidation Code	Order No.						

NO ALLOWABLE WILL BE ASSIGNED TO THIS COMPLETION UNTIL ALL INTERESTS HAVE BEEN CONSOLIDATED OR A NON-STANDARD UNIT HAS BEEN APPROVED BY THE DIVISION

<p>DETAIL</p>		<p>OPERATOR CERTIFICATION</p> <p>I hereby certify that the information herein is true and complete to the best of my knowledge and belief, and that this organization either owns a working interest or unleased mineral interest in the land including the proposed bottom hole location or has a right to drill this well at this location pursuant to a contract with an owner of such mineral or working interest, or to a voluntary pooling agreement or a compulsory pooling order heretofore entered by the division.</p>	
<p>GEODETIC COORDINATES NAD 27 NME</p> <p>Y=372075.0 N X=784069.3 E</p> <p>LAT.=32.019636° N LONG.=103.416787° W</p>		<p>reserve pit lat 32.019910 N long 103.416751 W</p>	
<p>bury trench lat 32.019910 N long 103.416677 W</p>		<p>SURVEYOR CERTIFICATION</p> <p>I hereby certify that the well location shown on this plat was plotted from field notes of actual surveys made by me or under my supervision, and that the same is true and correct to the best of my belief.</p>	
<p>Pit Plat</p>		<p>Date Surveyed: JUNE 27, 2008</p> <p>Signature & Seal of Professional Surveyor</p>	
<p>Pit Plat</p>		<p>Certificate No. GARY EIDSON 12641 RONALD J. EIDSON 3239</p>	

LOCATION VERIFICATION MAP



SCALE: 1" = 2000'

CONTOUR INTERVAL:
ANDREWS PLACE, N.M. - 10'

SEC. 25 TWP. 26-S RGE. 34-E

SURVEY N.M.P.M.

COUNTY LEA STATE NEW MEXICO

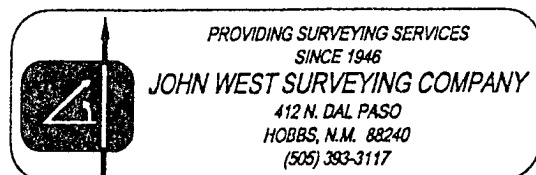
DESCRIPTION 660' FNL & 660' FEL

ELEVATION 3191'

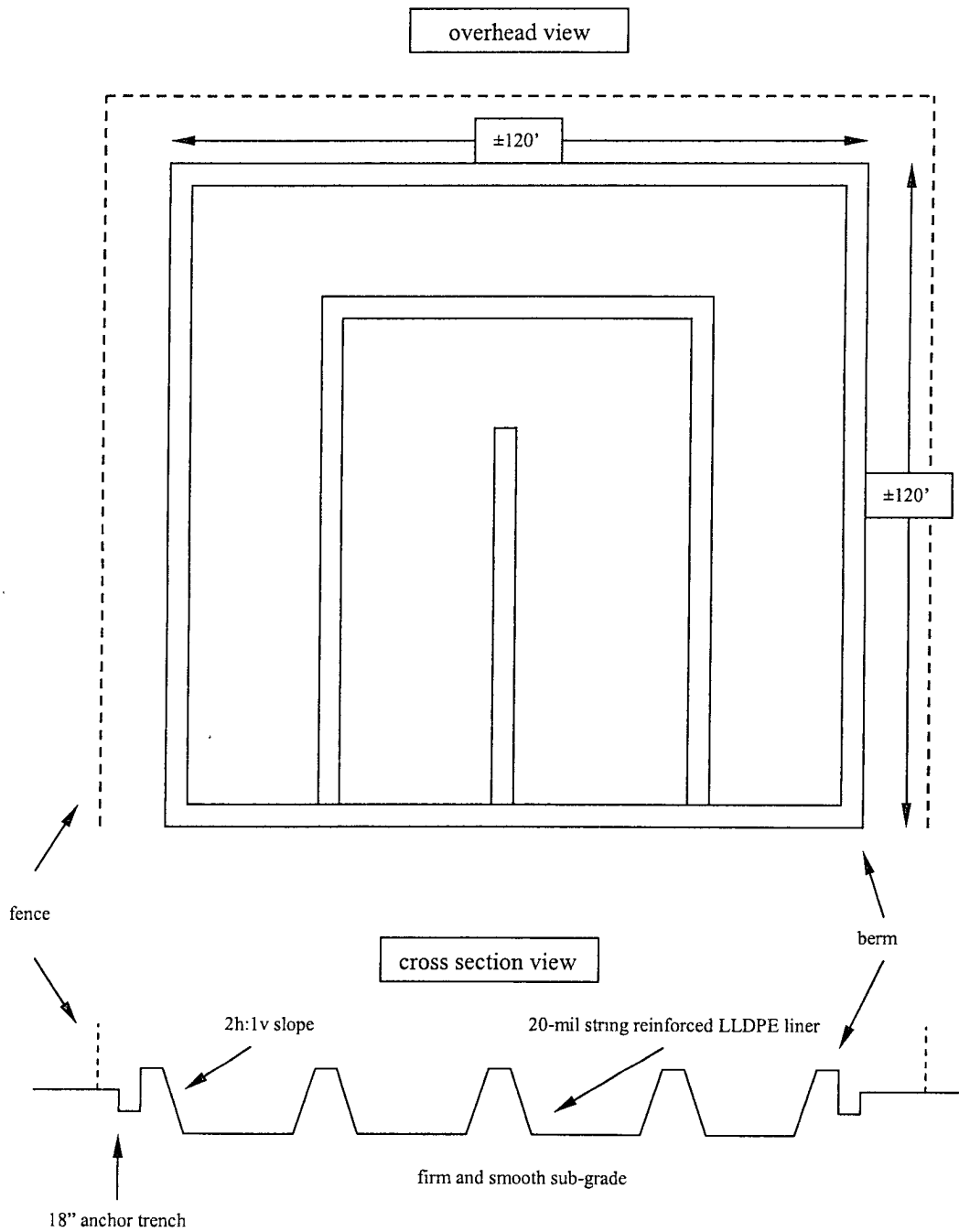
OPERATOR GREAT WESTERN
DRILLING CO.

LEASE MADERA 25 FEDERAL

U.S.G.S. TOPOGRAPHIC MAP
ANDREWS PLACE, N.M.



TEMPORARY PIT DESIGN PLAN

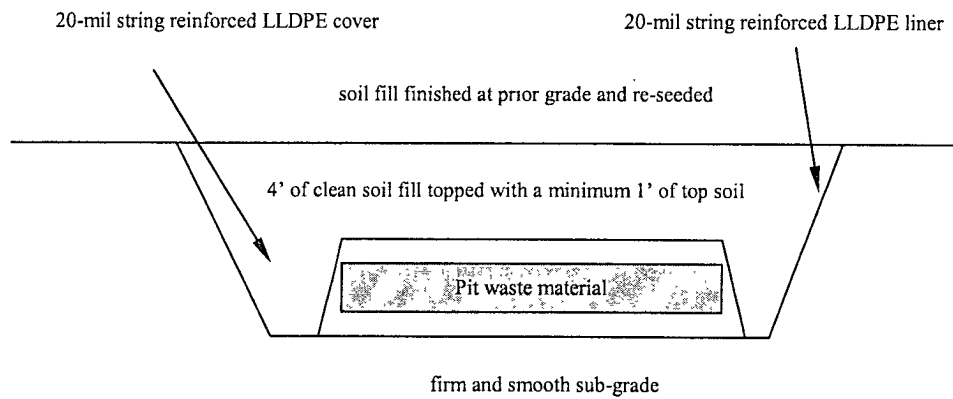


Great Western Drilling Company
Madera 25 Federal #2

BURIAL TRENCH DESIGN PLAN

cross section view

The length, width and depth of the on-site trench will be determined after calculating the volume of the waste material



Great Western Drilling Company
Madera 25 Federal #2