

DISTRICT I
1625 N. French Dr., Hobbs, NM 88240
DISTRICT II
1301 W. Grand Avenue, Hobbs, NM 88240
DISTRICT III
1000 Rio Brazos, Hobbs, NM 88240
DISTRICT IV
1220 S. St. Francis Dr., Santa Fe, NM 87505

State of New Mexico
Energy, Minerals and Natural Resources Department

Form C-102
Revised October 12, 2005

Submit to Appropriate District Office
State Lease - 4 Copies
Fee Lease - 3 Copies

OIL CONSERVATION DIVISION
1220 South St. Francis Dr.
Santa Fe, New Mexico 87505

☐ AMENDED REPORT

WELL LOCATION AND ACREAGE DEDICATION PLAT

API Number 30-025-39067	Pool Code 23000	Pool Name Eunice Monument, Grayburg - San Andres
Property Code 302708	Property Name NMGSA UNIT	Well Number 374
OGRID No. 873	Operator Name APACHE CORPORATION	Elevation 3658'

Surface Location

UL or lot No.	Section	Township	Range	Lot Idn	Feet from the	North/South line	Feet from the	East/West line	County
H	25	19 S	36 E		1330	NORTH	1185	EAST	LEA

Bottom Hole Location If Different From Surface

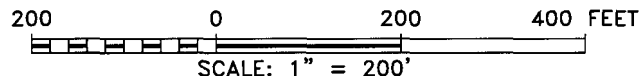
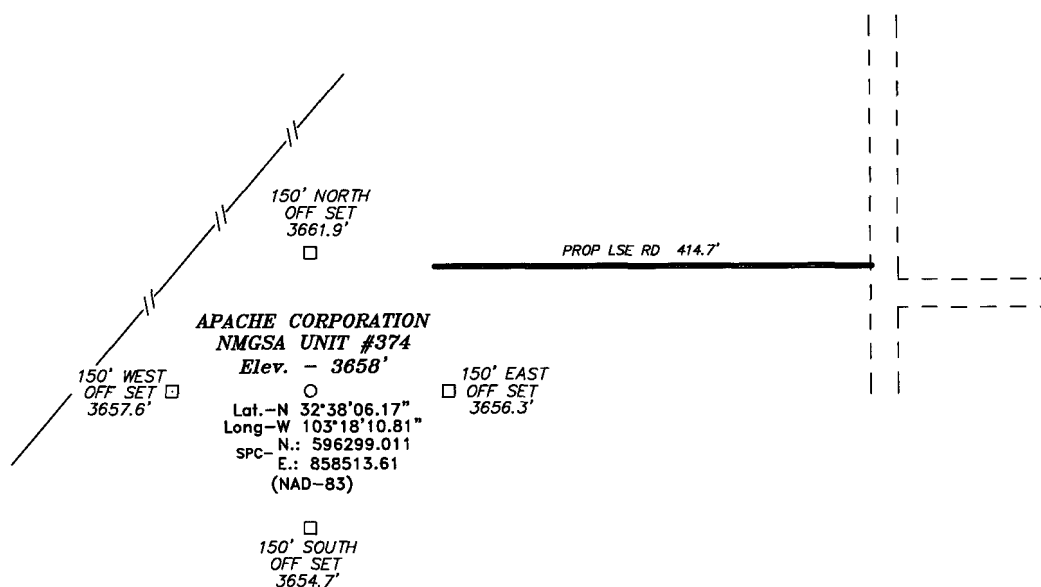
UL or lot No.	Section	Township	Range	Lot Idn	Feet from the	North/South line	Feet from the	East/West line	County

Dedicated Acres 40.00	Joint or Infill	Consolidation Code	Order No.
--------------------------	-----------------	--------------------	-----------

NO ALLOWABLE WILL BE ASSIGNED TO THIS COMPLETION UNTIL ALL INTERESTS HAVE BEEN CONSOLIDATED
OR A NON-STANDARD UNIT HAS BEEN APPROVED BY THE DIVISION

	OPERATOR CERTIFICATION I hereby certify that the information contained herein is true and complete to the best of my knowledge and belief, and that this organization either owns a working interest or unleased mineral interest in the land including the proposed bottom hole location pursuant to a contract with an owner of such a mineral or working interest, or to a voluntary pooling agreement or a compulsory pooling order heretofore entered by the division. Signature: <u>[Signature]</u> Date: <u>10/1/08</u> Printed Name: <u>SAM HAMPTON</u>
	SURVEYOR CERTIFICATION I hereby certify that the well location shown on this plat was plotted from field notes of actual surveys made by me or under my supervision, and that the same is true and correct to the best of my belief. SEPTEMBER 23, 2008 Date Surveyed: <u>SEP 23 2008</u> Signature & Seal: <u>[Signature]</u> Professional Surveyor W.O. <u>2008</u> Certificate No. Gary L. Jones 7977
	BASIN SURVEYS

SECTION 25, TOWNSHIP 19 SOUTH, RANGE 36 EAST, N.M.P.M.,
LEA COUNTY, NEW MEXICO.



Directions to Location:

FROM THE JUNCTION OF HWY 62-180 AND CO. RD. 41 (MADDOX), GO SOUTH 4.2 MILES ON MADDOX TO LEASE ROAD, ON LEASE ROAD GO WEST TO LEASE ROAD AND PROPOSED LEASE ROAD.

BASIN SURVEYS P.O. BOX 1786-HOBBS, NEW MEXICO

W.O. Number: 20060

Drawn By: J. M. SMALL

Date: 09-23-2008

Disk: 20059 JMS

APACHE CORPORATION

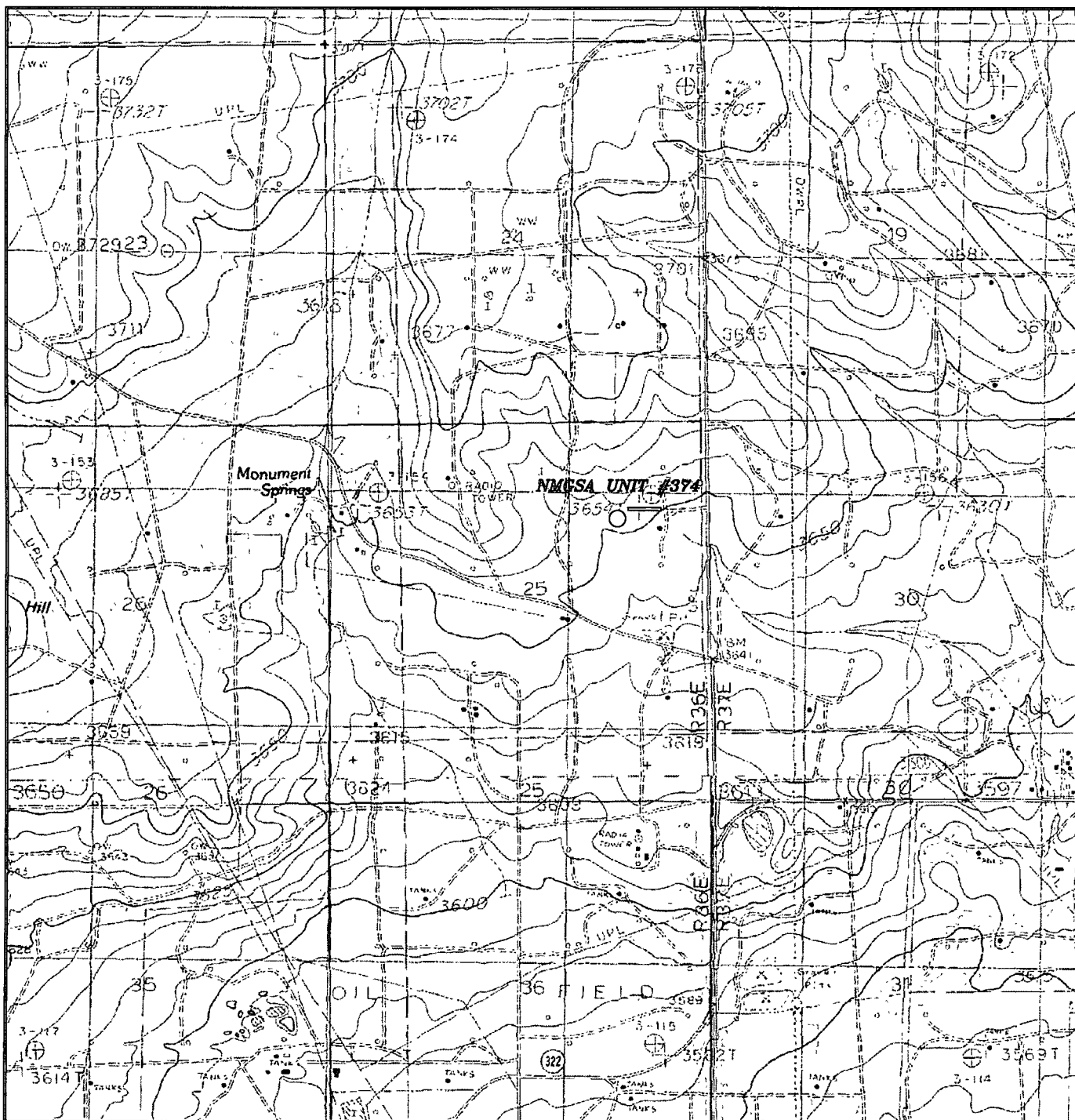
REF: NMGSA UNIT #374 / WELL PAD TOPO

THE NMGSA UNIT #374 LOCATED 1330'

FROM THE NORTH LINE AND 1185' FROM THE EAST LINE OF
SECTION 25, TOWNSHIP 19 SOUTH, RANGE 36 EAST,
N.M.P.M., LEA COUNTY, NEW MEXICO.

Survey Date: 09-23-2008

Sheet 1 of 1 Sheets



NMGSA UNIT #374

Located at 1330' FNL AND 1185' FEL
Section 25, Township 19 South, Range 36 East,
N.M.P.M., Lea County, New Mexico.

basin
surveys
focused on excellence
in the oilfield

P.O. Box 1786
1120 N. West County Rd.
Hobbs, New Mexico 88241
(505) 393-7316 - Office
(505) 392-3074 - Fax
basinsurveys.com

W.O. Number: 20059

Survey Date: 09-23-2008

Scale: 1" = 2000'

Date: 09-23-2008

APACHE
CORP.

