

## District I

1625 N. French Dr., Hobbs, NM 88240

## District II

1301 W. Grand Avenue, Artesia, NM 88210

## District III

1000 Rio Brazos Road, Aztec, NM 87410

## District IV

1220 S St Francis Dr, Santa Fe, NM 87505

State of New Mexico

Energy Minerals and Natural Resources

Form C-101

May 27, 2004

Submit to appropriate District Office

☐ AMENDED REPORT

## APPLICATION FOR PERMIT TO DRILL, RE-ENTER, DEEPEN, PLUGBACK, OR ADD A ZONE

<sup>1</sup> Operator Name and Address Apache Corporation 6120 S Yale Ave, Suite 1500 Tulsa, OK 74136-4224		<sup>2</sup> OGRID Number 00873
		<sup>3</sup> API Number 30-025-06625
<sup>4</sup> Property Code 23113	<sup>5</sup> Property Name State C Tract 12	<sup>6</sup> Well No. 003
<sup>9</sup> Proposed Pool 1 Eunice; Bli-Tu-Dr, North (22900)		<sup>10</sup> Proposed Pool 2

<sup>7</sup> Surface Location

UL or lot no	Section	Township	Range	Lot Idn	Feet from the	North/South line	Feet from the	East/Westline	County
E	16	21S	37E		1980	North	660	West	Lea

<sup>8</sup> Proposed Bottom Hole Location If Different From Surface

UL or lot no	Section	Township	Range	Lot Idn	Feet from the	North/South line	Feet from the	East/Westline	County

## Additional Well Information

<sup>11</sup> Work Type Code A P	<sup>12</sup> Well Type Code I	<sup>13</sup> Cable/Rotary	<sup>14</sup> Lease Type Code S	<sup>15</sup> Ground Level Elevation 3469'
<sup>16</sup> Multiple Yes	<sup>17</sup> Proposed Depth 6660'	<sup>18</sup> Formation Blinebry/Drinkard	<sup>19</sup> Contractor	<sup>20</sup> Spud Date ASAP
Depth to Groundwater		Distance from nearest fresh water well		Distance from nearest surface water
Pit: Liner, Synthetic <input type="checkbox"/> mlst thick Clay <input type="checkbox"/> Pit Volume: _____ bbls Drilling Method: _____ Closed-Loop System <input type="checkbox"/> Fresh Water <input type="checkbox"/> Brine <input type="checkbox"/> Diesel/Oil-based <input type="checkbox"/> Gas/Air <input type="checkbox"/>				

<sup>21</sup> Proposed Casing and Cement Program

Hole Size	Casing Size	Casing weight/foot	Setting Depth	Sacks of Cement	Estimated TOC
17-1/2"	13-3/8"	54.5#	322'	300	TOC - circ
12"	9-5/8"	36# & 32#	2900'	1500	1560'
8-3/4"	7"	23# & 20#	6660'	775	1900'

<sup>22</sup> Describe the proposed program. If this application is to DEEPEN or PLUG BACK, give the data on the present productive zone and proposed new productive zone. Describe the blowout prevention program, if any. Use additional sheets if necessary.

Current Profile: This well is temporarily abandoned:

Drinkard perfs fr/ 6476' - 6660', below CIBP @ 6425'. Blinebry perfs fr/ 5835' - 5975', squeezed.

Grayburg perfs fr/ 3721' - 3774', below CIBP @ 3649'. Eumont perfs fr/ 3574' - 3620', squeezed and below CIBP @ 3500'.

Apache proposes to recompleat to a Bli/Dri injector and then bring the well into the West Blinebry Drinkard Unit per R-12981:

1. MIRU. 2. Drill out cmt and CIBPs from 3465' - 3500' & 3614' - 3649'.

3. Squeeze Grayburg perfs fr/ 3721' - 3774'. 4. Drill out and test squeeze.

5. Drill out cmt & CIBP fr/ 6346' - 6425'. 6. Clean out well to PBTD @ 6660'.

7. Isolate & acidize Drinkard fr/ 6476' - 6600'.

8. Re-perf Blinebry fr/ 5835' - 5975'.

9. Isolate & acidize Blinebry fr/ 5835' - 5975'. 10. Frac Blinebry fr/ 5835' - 5975'.

11. RIH w/ IPC injection tubing & packer to 5750'.

12. Notify NMOCD office prior to pressure testing casing per NMOCD regulations.

13. Begin injection in the Blinebry/Drinkard.

**Permit Expires 2 Years From Approval Date Unless Drilling Underway Plugback**

<sup>23</sup> I hereby certify that the information given above is true and complete to the best of my knowledge and belief. I further certify that the drilling pit will be constructed according to NMOCD guidelines ☐, a general permit ☐, or an (attached) alternative OCD-approved plan ☐.

Printed name: Sophie Mackay

Title: Engineering Tech

E-mail Address: sophie.mackay@apachecorp.com

Date: 09/18/2008

Phone: (918)491-4864

## OIL CONSERVATION DIVISION

Approved by

Title: PETROLEUM ENGINEER

Approval Date:

OCT 06 2008

Expiration Date:

**Condition of Approval: Notify OCD Hobbs office 24 hours prior to running MIT Test & Chart.**

District I  
1625 N. French Dr., Hobbs, NM 88240

District II  
1301 W. Grand Avenue, Aztec, NM 87410

District III  
1000 Rio Brazos Rd., Aztec, NM 87410

District IV  
1220 S. St. Francis Dr., Santa Fe, NM 87505

RECEIVED

State of New Mexico

Energy, Minerals & Natural Resources Department

OIL CONSERVATION DIVISION

1220 South St. Francis Dr.

Santa Fe, NM 87505

Form C-102

Revised October 12, 2005

Submit to Appropriate District Office

State Lease - 4 Copies

Fee Lease - 3 Copies

☐ AMENDED REPORT

WELL LOCATION AND ACREAGE DEDICATION PLAT

API Number 30-025-06625	Pool Code 22900	Pool Name Eunice; Bli-Tu-Dr, North
Property Code 23113	Property Name State C Tract 12	Well Number 003
OGRID No. 00873	Operator Name Apache Corporation (873)	Elevation 3469'

<sup>10</sup> Surface Location

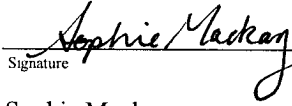
UL or lot no. E	Section 16	Township 21S	Range 37E	Lot Idn	Feet from the 1980	North/South line North	Feet from the 660	East/West line West	County Lea
--------------------	---------------	-----------------	--------------	---------	-----------------------	---------------------------	----------------------	------------------------	---------------

<sup>11</sup> Bottom Hole Location If Different From Surface

UL or lot no.	Section	Township	Range	Lot Idn	Feet from the	North/South line	Feet from the	East/West line	County
---------------	---------	----------	-------	---------	---------------	------------------	---------------	----------------	--------

<sup>12</sup> Dedicated Acres 40	<sup>13</sup> Joint or Infill	<sup>14</sup> Consolidation Code	<sup>15</sup> Order No.
-------------------------------------	-------------------------------	----------------------------------	-------------------------

No allowable will be assigned to this completion until all interests have been consolidated or a non-standard unit has been approved by the division.

16				<sup>17</sup> OPERATOR CERTIFICATION <i>I hereby certify that the information contained herein is true and complete to the best of my knowledge and belief, and that this organization either owns a working interest or unleased mineral interest in the land including the proposed bottom hole location or has a right to drill this well at this location pursuant to a contract with an owner of such a mineral or working interest, or to a voluntary pooling agreement or a compulsory pooling order heretofore entered by the division</i>  09/18/2008 Signature Date Sophie Mackay Printed Name
				<sup>18</sup> SURVEYOR CERTIFICATION <i>I hereby certify that the well location shown on this plat was plotted from field notes of actual surveys made by me or under my supervision, and that the same is true and correct to the best of my belief</i>
				Date of Survey Signature and Seal of Professional Surveyor
				Certificate Number

Present

**WELL DATA SHEET**

Last Update: 9-9-08

Lease Name: WBDU #5824 (State C, Fract 12 #3) API No: 30-025-06625

Location: 1980' N / 660' W  
C-SW-NW, Sec 16, T-21S, R-37E County: Lea ST: NM

Spud Date: 7-19-47 Well Elev: 3469' GL 12' KB

TD Date: 9-9-47 Completion Date: 3-3-61

TD: 6660' PBTD: 3465' TOC: 1900' (trs)

Producing Formation: Grayburg

Size: 3 3/8" 9 5/8" Perfs: From 3721' to 74' /spf \_\_\_\_\_ to \_\_\_\_\_

Wt: 545 32# to \_\_\_\_\_ /spf \_\_\_\_\_ to \_\_\_\_\_

Grd: \_\_\_\_\_ IP: \_\_\_\_\_ BOPD \_\_\_\_\_ BHPD \_\_\_\_\_ MCF/D

Dpth: 322' 2900' Well History: (See Attached)

Cmt: 300 1500

(Circ) \_\_\_\_\_

Evment \_\_\_\_\_

3574' sqw/

to 3620' 300sx

\_\_\_\_\_

\_\_\_\_\_

\_\_\_\_\_

\_\_\_\_\_

\_\_\_\_\_

\_\_\_\_\_

\_\_\_\_\_

\_\_\_\_\_

\_\_\_\_\_

\_\_\_\_\_

\_\_\_\_\_

\_\_\_\_\_

\_\_\_\_\_

\_\_\_\_\_

\_\_\_\_\_

\_\_\_\_\_

\_\_\_\_\_

\_\_\_\_\_

\_\_\_\_\_

\_\_\_\_\_

\_\_\_\_\_

\_\_\_\_\_

\_\_\_\_\_

\_\_\_\_\_

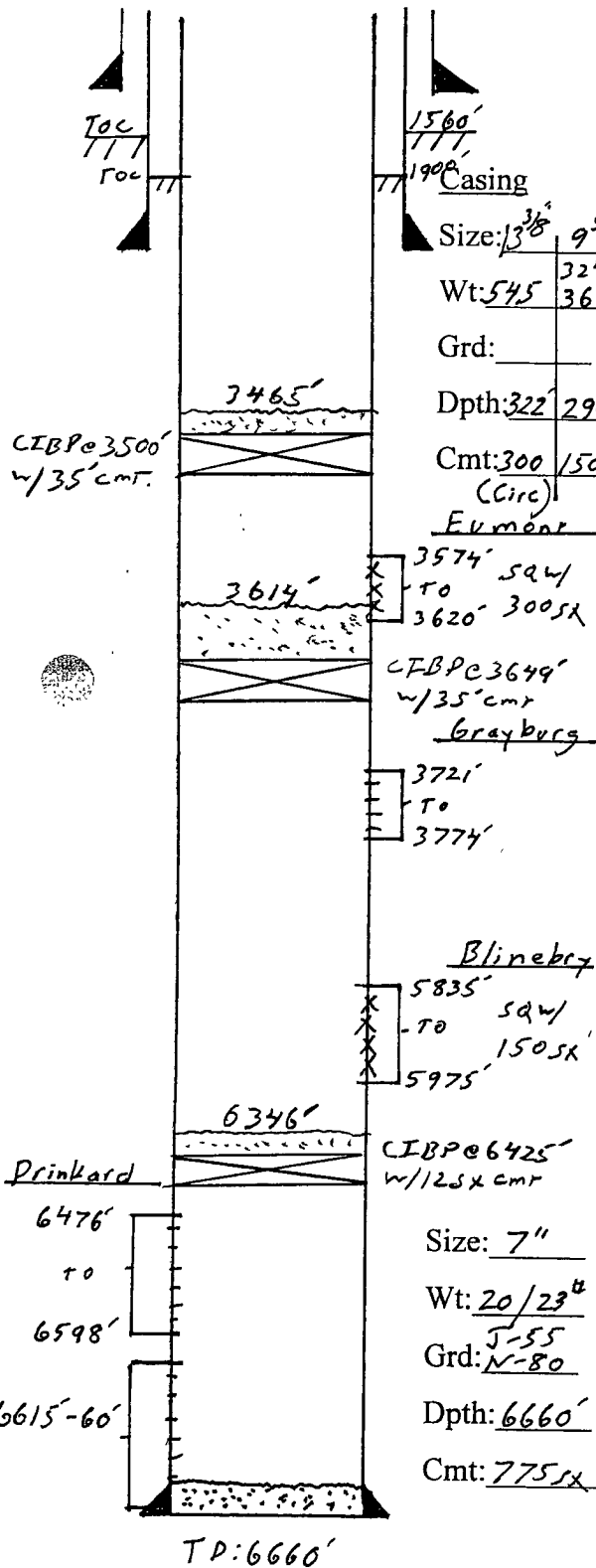
\_\_\_\_\_

\_\_\_\_\_

\_\_\_\_\_

\_\_\_\_\_

\_\_\_\_\_



# Proposed

## WELL DATA SHEET

Last Update: 9-15-08

Lease Name: WBDU #5816 (State C, Tract 12 #3) API No: 30-025-06625

Location: 1980' N / 660' W  
C-SW-NW, Sec 16, T-21S, R-37E County: Lea ST: NM

Injection Order Date: 8-11-08 Spud Date: 7-19-47 Well Elev: 3469' GL 12' KB

Injection Order No: R-12981 TD Date: 9-9-47 Completion Date: 3-3-61

Permit BPD / PSI: 490 / 1120 TD: 6660' PBDT: 6660' TOC: 1900' +

Casing Producing Formation: Blinebry / Drinkard

Size: 3 3/8" x 9 5/8" Perfs: From 5835' to 5975' /spf \_\_\_\_\_ to \_\_\_\_\_

Wt: 57.5# 32# 36# 6476' to 6660' /spf \_\_\_\_\_ to \_\_\_\_\_

Grd: \_\_\_\_\_ Well History: (See Attached)

Dpth: 322' 2900'

Cmt: 300' 1500'

(Circ) \_\_\_\_\_

\_\_\_\_\_

\_\_\_\_\_

\_\_\_\_\_

\_\_\_\_\_

\_\_\_\_\_

\_\_\_\_\_

\_\_\_\_\_

\_\_\_\_\_

\_\_\_\_\_

\_\_\_\_\_

\_\_\_\_\_

\_\_\_\_\_

\_\_\_\_\_

\_\_\_\_\_

\_\_\_\_\_

\_\_\_\_\_

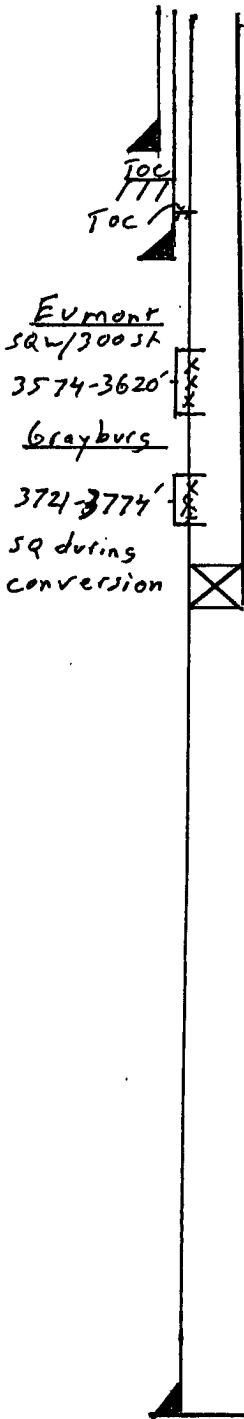
\_\_\_\_\_

\_\_\_\_\_

\_\_\_\_\_

\_\_\_\_\_

\_\_\_\_\_



TD: 6660'

### Well Equipment:

Tbg: ±185' Jts 2 3/8" Size IPC Grade

Pkr Type Baker Lok-Set Depth: 5750'

### Casing:

Size: 7" Wt: 20/23# Grd: J-55 Depth: 6660' Cmt: 775'ss