

District I  
1625 N French Dr , Hobbs, NM 88240  
District II  
1301 W Grand Avenue, Artesia, NM 88210  
District III  
1000 Rio Brazos Road, Aztec, NM 87410  
District IV  
1220 S St Francis Dr , Santa Fe, NM 87505

State of New Mexico  
Energy Minerals and Natural Resources

Oil Conservation Division  
1220 South St. Francis Dr.  
Santa Fe, NM 87505

Submit by Email Print Form

Form C-101  
June 16, 2008

Submit to appropriate District Office

☐ AMENDED REPORT

APPLICATION FOR PERMIT TO DRILL, RE-ENTER, DEEPEN, PLUGBACK, OR ADD A ZONE

<sup>1</sup> Operator Name and Address <b>PETROHAWK OPERATING COMPANY 1000 LOUISIANA STE 5600, HOUSTON, TX 7702</b>		<sup>2</sup> OGRID Number <b>194849</b>
		<sup>3</sup> API Number <b>30 - 025-39178</b>
<sup>4</sup> Property Code <b>302433</b>	<sup>5</sup> Property Name <b>STATE A A/C 2</b>	<sup>6</sup> Well No <b>98</b>
<sup>9</sup> Proposed Pool 1 <b>EUNICE;SEVEN RIVERS-QUEEN, SOUTH</b>		<sup>10</sup> Proposed Pool 2

<sup>7</sup> Surface Location

UL or lot no <b>P</b>	Section <b>5</b>	Township <b>22S</b>	Range <b>36E</b>	Lot Idn	Feet from the <b>10</b>	North/South line <b>S</b>	Feet from the <b>1308</b>	East/West line <b>E</b>	County <b>LEA</b>
--------------------------	---------------------	------------------------	---------------------	---------	----------------------------	------------------------------	------------------------------	----------------------------	----------------------

<sup>8</sup> Proposed Bottom Hole Location If Different From Surface

UL or lot no	Section	Township	Range	Lot Idn	Feet from the	North/South line	Feet from the	East/West line	County
--------------	---------	----------	-------	---------	---------------	------------------	---------------	----------------	--------

Additional Well Information

<sup>11</sup> Work Type Code <b>N</b>	<sup>12</sup> Well Type Code <b>O</b>	<sup>13</sup> Cable/Rotary <b>R</b>	<sup>14</sup> Lease Type Code <b>S</b>	<sup>15</sup> Ground Level Elevation <b>3568</b>
<sup>16</sup> Multiple <b>NO</b>	<sup>17</sup> Proposed Depth <b>4000</b>	<sup>18</sup> Formation <b>QUEEN</b>	<sup>19</sup> Contractor	<sup>20</sup> Spud Date

<sup>21</sup> Proposed Casing and Cement Program

Hole Size	Casing Size	Casing weight/foot	Setting Depth	Sacks of Cement	Estimated TOC
<b>12.25</b>	<b>8.625</b>	<b>24</b>	<b>1450</b>	<b>650</b>	<b>0</b>
<b>7.875</b>	<b>5.5</b>	<b>15.5</b>	<b>4000</b>	<b>725</b>	<b>0</b>

<sup>22</sup> Describe the proposed program If this application is to DEEPEN or PLUG BACK, give the data on the present productive zone and proposed new productive zone  
Describe the blowout prevention program, if any Use additional sheets if necessary

RECEIVED

SEP 11 2008  
HOBBS OCD

<sup>23</sup> I hereby certify that the information given above is true and complete to the best of my knowledge and belief		OIL CONSERVATION DIVISION	
Signature <i>Eddie W Seay</i>		Approved by <i>[Signature]</i>	
Printed name <b>Eddie Seay</b>		Title <b>Geologist</b>	
Title <b>Agent</b>		Approval Date <b>9/25/08</b>	Expiration Date <b>9/25/10</b>
E-mail Address <b>seay04@leaco.net</b>			
Date <b>9/9/08</b>	Phone <b>575-390-2454</b>		

Permit Expires 2 Years From Approval  
Date Unless Drilling Underway

CONDITIONS OF APPROVAL for Non-Standard Location  
Intent to drill ONLY — CANNOT produce until the Non-Standard  
Location has been approved by OCD Santa Fe office.

**DISTRICT I**

10 N. FRENCH DR., HOBBS, NM 88240

**State of New Mexico**

Energy, Minerals and Natural Resources Department

**DISTRICT II**

1301 W. GRAND AVENUE, ARTESIA, NM 88210

**DISTRICT III**

1000 Rio Brazos Rd., Aztec, NM 87410

**OIL CONSERVATION DIVISION**1220 SOUTH ST. FRANCIS DR.  
Santa Fe, New Mexico 87505

Form C-102

Revised October 12, 2005

Submit to Appropriate District Office

State LEASE - 4 Copies

Fee LEASE - 3 Copies

**DISTRICT IV**

1220 S. ST. FRANCIS DR., SANTA FE, NM 87505

**WELL LOCATION AND ACREAGE DEDICATION PLAT**☐ AMENDED REPORT

API Number <b>30-025-39178</b>	Pool Code <b>24130</b>	Pool Name <b>EUNICE; SEVEN RIVERS - QUEEN, SOUTH</b>
Property Code <b>302433</b>	Property Name <b>STATE A A/C 2</b>	Well Number <b>98</b>
OGRID No. <b>194849</b>	Operator Name <b>PETROHAWK OPERATING</b>	Elevation <b>3568'</b>

**Surface Location**

UL or lot No.	Section	Township	Range	Lot Idn	Feet from the	North/South line	Feet from the	East/West line	County
P	5	22-S	36-E		10	SOUTH	1308	EAST	LEA

**Bottom Hole Location If Different From Surface**

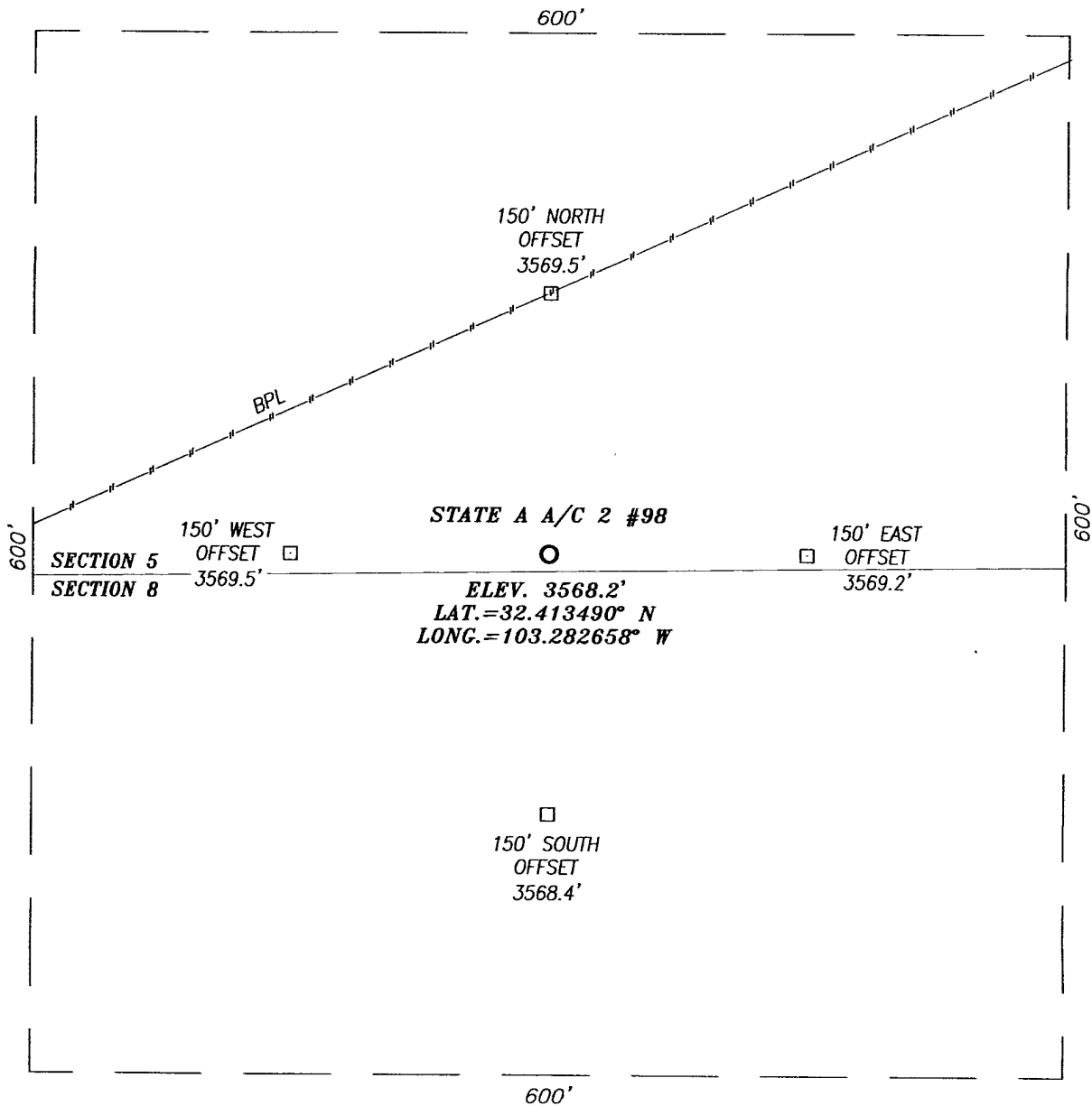
UL or lot No.	Section	Township	Range	Lot Idn	Feet from the	North/South line	Feet from the	East/West line	County

Dedicated Acres	Joint or Infill	Consolidation Code	Order No.
<b>40</b>			

**NO ALLOWABLE WILL BE ASSIGNED TO THIS COMPLETION UNTIL ALL INTERESTS HAVE BEEN CONSOLIDATED  
OR A NON-STANDARD UNIT HAS BEEN APPROVED BY THE DIVISION**

LOT 4	LOT 3	LOT 2	LOT 1
<p>GEODETIC COORDINATES NAD 27 NME. SURFACE LOCATION</p> <p>Y=515735.5 N X=824241.3 E</p> <p>LAT.=32.413490° N LONG.=103.282658° W</p>			
<p><b>OPERATOR CERTIFICATION</b></p> <p>I hereby certify that the information herein is true and complete to the best of my knowledge and belief, and that this organization either owns a working interest or unleased mineral interest in the land including the proposed bottom hole location or has a right to drill this well at this location pursuant to a contract with an owner of such mineral or working interest, or to a voluntary pooling agreement or a compulsory pooling order heretofore entered by the division.</p> <p><i>Eddie W Seay</i> 9/2/08 Signature Date <i>Eddie W Seay</i> Printed Name</p>			
<p><b>SURVEYOR CERTIFICATION</b></p> <p>I hereby certify that the well location shown on this plat was plotted from field notes of actual surveys made by me or under my supervision, and that the same is true and correct to the best of my belief.</p> <p>RONALD J. EIDSON JUNE 30, 2008 DATE SURVEYED Signature &amp; Seal of Professional Surveyor <i>Ronald J. Eidson</i> 9/2/08 Certificate No. GARY G. EIDSON 12841 RONALD J. EIDSON 3239</p>			

**SECTION 5, TOWNSHIP 22 SOUTH, RANGE 36 EAST, N.M.P.M.,**  
 LEA COUNTY, NEW MEXICO

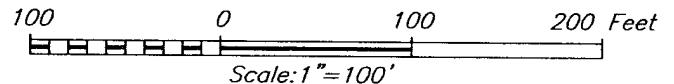


**DIRECTIONS TO LOCATION**

FROM THE INTERSECTION OF COUNTY ROAD #E21  
 (DELAWARE BASIN ROAD) AND COUNTY ROAD #E21  
 (WEAVER ROAD), GO EAST ON DELAWARE BASIN ROAD  
 APPROX. 0.8 MILES. TURN LEFT AND GO NORTH APPROX.  
 0.95 MILES. THIS LOCATION IS WEST APPROX. 661 FEET.



PROVIDING SURVEYING SERVICES  
 SINCE 1946  
**JOHN WEST SURVEYING COMPANY**  
 412 N. DAL PASO  
 HOBBS, N.M. 88240  
 (505) 393-3117

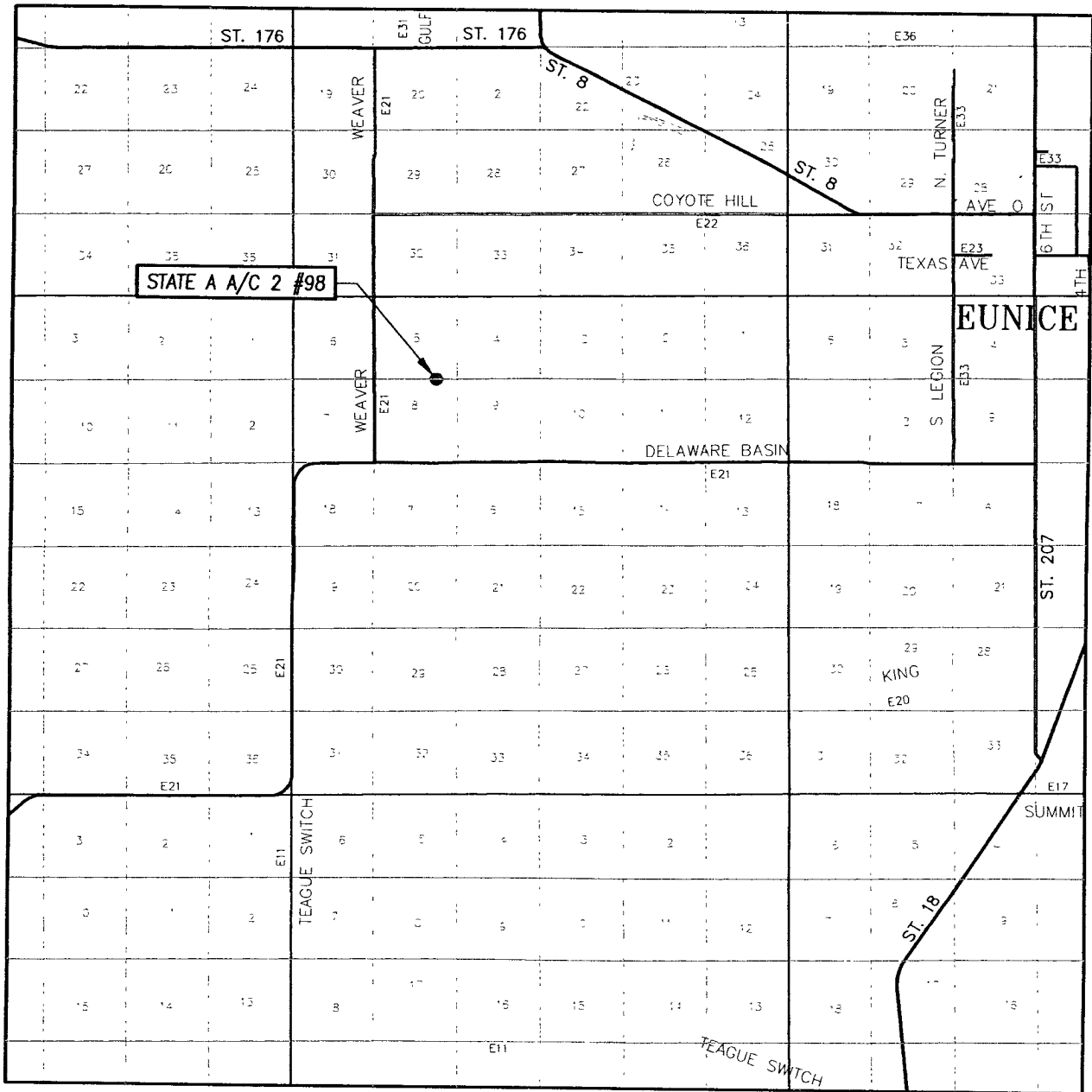


**PETROHAWK OPERATING**

STATE A A/C 2 #98 WELL  
 LOCATED 10 FEET FROM THE SOUTH LINE  
 AND 1308 FEET FROM THE EAST LINE OF SECTION 5,  
 TOWNSHIP 22 SOUTH, RANGE 36 WEST, N.M.P.M.,  
 LEA COUNTY, NEW MEXICO.

Survey Date: 6/30/08	Sheet 1 of 1 Sheets
W.O. Number: 08.11.1041	Dr By: DSS
Date: 7/7/08	08111041
	Scale: 1"=100'

# VICINITY MAP



SCALE: 1" = 2 MILES

SEC. 5 TWP. 22-S RGE. 36-E

SURVEY N.M.P.M.

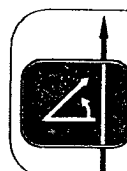
COUNTY LEA STATE NEW MEXICO

DESCRIPTION 10' FSL & 1308' FEL

ELEVATION 3568'

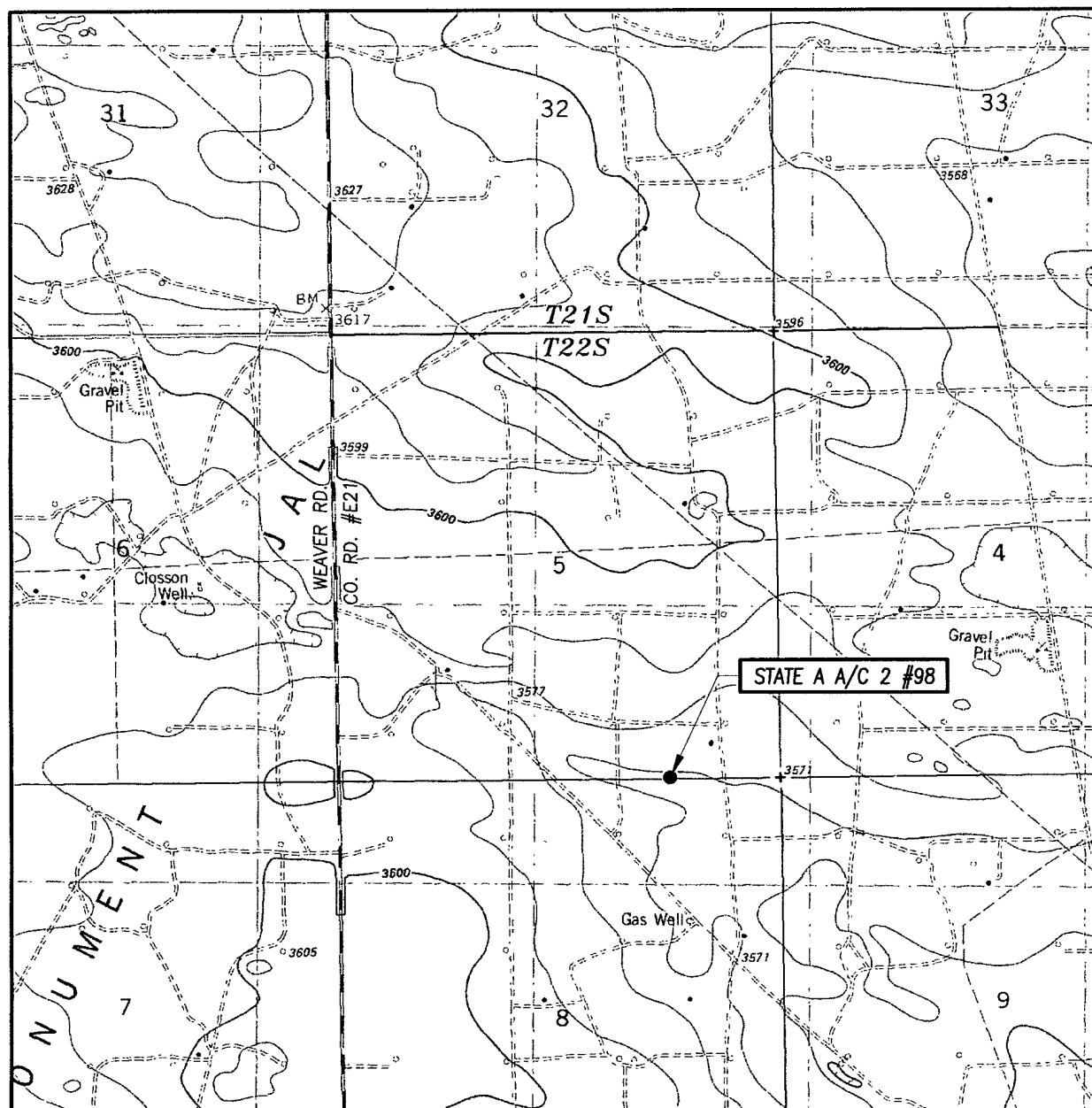
OPERATOR PETROHAWK OPERATING

LEASE STATE A A/C 2



PROVIDING SURVEYING SERVICES  
SINCE 1946  
**JOHN WEST SURVEYING COMPANY**  
412 N DAL PASO  
HOBBS, N.M. 88240  
(505) 393-3117

# LOCATION VERIFICATION MAP



SCALE: 1" = 2000'

CONTOUR INTERVAL: 10'  
OIL CENTER, NM

SEC. 5 TWP. 22-S RGE. 36-E

SURVEY N.M.P.M.

COUNTY LEA STATE NEW MEXICO

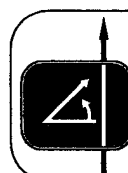
DESCRIPTION 10' FSL & 1308' FEL

ELEVATION 3568'

OPERATOR PETROHAWK OPERATING

LEASE STATE A A/C 2

U.S.G.S. TOPOGRAPHIC MAP  
OIL CENTER, NM



PROVIDING SURVEYING SERVICES  
SINCE 1946  
JOHN WEST SURVEYING COMPANY  
412 N DAL PASO  
HOBBS, N.M. 88240  
(505) 393-3117