

District I  
1625 N. French Dr., Hobbs, NM 88240  
District II  
1301 W. Grand Avenue, Artesia, NM 88210  
District III  
1000 Rio Brazos Road, Aztec, NM 87410  
District IV  
1220 S. St. Francis Dr., Santa Fe, NM 87505

State of New Mexico  
Energy Minerals and Natural Resources  
Oil Conservation Division  
1220 South St. Francis Dr.  
Santa Fe, NM 87505

Form C-101  
June 16, 2008

Submit to appropriate District Office

☐ AMENDED REPORT

**APPLICATION FOR PERMIT TO DRILL, RE-ENTER, DEEPEN, PLUGBACK, OR ADD A ZONE**

<sup>1</sup> Operator Name and Address Apache Corporation 6930 S. Yale, Ste. 1500 Tulsa, OK 74136		<sup>2</sup> OGRID Number 813
<sup>3</sup> Property Code New 37421		<sup>4</sup> API Number 30 - 025-39193
<sup>5</sup> Property Name House SWD		<sup>6</sup> Well No. 1
<sup>9</sup> Proposed Pool 1 House; San Andres		<sup>10</sup> Proposed Pool 2

<sup>7</sup> Surface Location									
UL or lot no	Section	Township	Range	Lot Idn	Feet from the	North/South line	Feet from the	East/West line	County
M	12	20S	38E		990	S	500	W	Lea

<sup>8</sup> Proposed Bottom Hole Location If Different From Surface									
UL or lot no	Section	Township	Range	Lot Idn	Feet from the	North/South line	Feet from the	East/West line	County

Additional Well Information				
<sup>11</sup> Work Type Code New Well	<sup>12</sup> Well Type Code SWD	<sup>13</sup> Cable/Rotary	<sup>14</sup> Lease Type Code P	<sup>15</sup> Ground Level Elevation 3563
<sup>16</sup> Multiple N	<sup>17</sup> Proposed Depth 5500'	<sup>18</sup> Formation San Andres	<sup>19</sup> Contractor	<sup>20</sup> Spud Date

<sup>21</sup> Proposed Casing and Cement Program					
Hole Size	Casing Size	Casing weight/foot	Setting Depth	Sacks of Cement	Estimated TOC
17 1/2"	13 3/8"	48 #/ft	400'	350	Surface
12 1/4"	9 5/8"	40 #/ft	4,600'	1,200	Surface

<sup>22</sup> Describe the proposed program. If this application is to DEEPEN or PLUG BACK, give the data on the present productive zone and proposed new productive zone. Describe the blowout prevention program, if any. Use additional sheets if necessary.

Drill 8 3/4" hole below 9 5/8" casing to 5,500'  
Run 5 1/2", 17 #/ft lined casing to 4,600' and secure inside  
9 5/8" casing with packer. Open hole completion.

**Permit Expires 2 Years From Approval  
Date Unless Drilling Underway**

**Condition of Approval: Notify OCD Hobbs  
office 24 hours prior to running MIT Test & Chart.**

<sup>23</sup> I hereby certify that the information given above is true and complete to the best of my knowledge and belief.		OIL CONSERVATION DIVISION	
Signature:		Approved by:	
Printed name: Sam Hampton		Title: PETROLEUM ENGINEER	
Title: Drilling Engineer		Approval Date: OCT 09 2008	
E-mail Address: sam.hampton@apachecorp.com		Expiration Date:	
Date: 9/24/08	Phone: 918-491-4954	<b>"CONDITION FOR APPROVAL"</b> Approval for Drilling only. CANNOT Dispose into the wellbore without a Disposal order approved by the Santa Fe OCD Office	

RECEIVED

State of New Mexico

DISTRICT I

1625 N. FRENCH DR., HOBBS, NM 88240

DISTRICT II

1301 W. GRAND AVENUE, ARTESIA, NM 88210

DISTRICT III

1000 Rio Brazos Rd., Aztec, NM 88410

DISTRICT IV

1220 S ST. FRANCIS DR., SANTA FE, NM 87505

Energy, Minerals and Natural Resources Department

SEP 25 2008

OIL CONSERVATION DIVISION

1220 SOUTH ST. FRANCIS DR.  
Santa Fe, New Mexico 87505

Form C-102

Revised October 12, 2005

Submit to Appropriate District Office

State Lease - 4 Copies

Fee Lease - 3 Copies

## WELL LOCATION AND ACREAGE DEDICATION PLAT

☐ AMENDED REPORT

API Number <b>30-025-39193</b>	Pool Code <b>96121</b>	Pool Name <b>SWD; San Andres</b>
Property Code <b>37421</b>	Property Name <b>HOUSE SWD</b>	Well Number <b>1</b>
OGRID No. <b>873</b>	Operator Name <b>APACHE CORPORATION</b>	Elevation <b>3563'</b>

## Surface Location

UL or lot No.	Section	Township	Range	Lot Idn	Feet from the	North/South line	Feet from the	East/West line	County
M	12	20-S	38-E		990	SOUTH	500	WEST	LEA

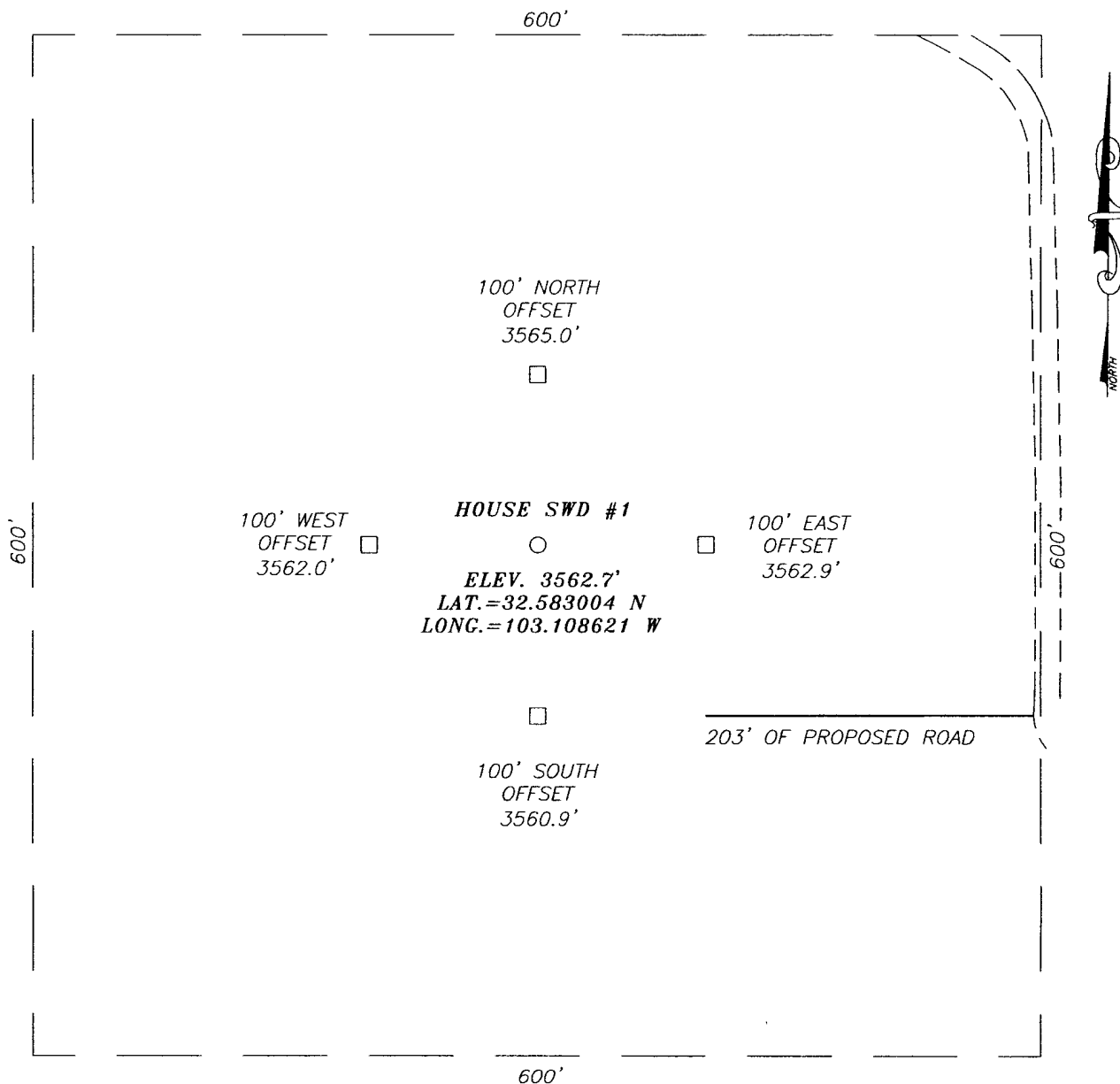
## Bottom Hole Location If Different From Surface

UL or lot No.	Section	Township	Range	Lot Idn	Feet from the	North/South line	Feet from the	East/West line	County
Dedicated Acres	Joint or Infill	Consolidation Code	Order No.						

NO ALLOWABLE WILL BE ASSIGNED TO THIS COMPLETION UNTIL ALL INTERESTS HAVE BEEN CONSOLIDATED  
OR A NON-STANDARD UNIT HAS BEEN APPROVED BY THE DIVISION

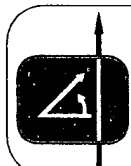
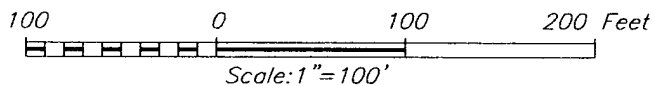
	<p>GEODETIC COORDINATES NAD 27 NME</p> <p>Y=577980.3 N X=877244.6 E</p> <p>LAT.=32.583004 N LONG=103.108621 W</p>		
<p><b>OPERATOR CERTIFICATION</b></p> <p>I hereby certify that the information herein is true and complete to the best of my knowledge and belief, and that this organization either owns a working interest or unleased mineral interest in the land including the proposed bottom hole location or has a right to drill this well at this location pursuant to a contract with an owner of such mineral or working interest, or to a voluntary pooling agreement or a compulsory pooling order heretofore entered by the division.</p> <p><i>[Signature]</i> 9/24/08 Signature Date <b>SAM HAMPTON</b> Printed Name</p>			
<p><b>SURVEYOR CERTIFICATION</b></p> <p>I hereby certify that the well location shown on this plat was plotted from field notes of actual surveys made by me or under my supervision, and that the same is true and correct to the best of my belief.</p> <p><i>[Signature]</i> 9/22/08 Date Surveyed Signature &amp; Seal of Professional Surveyor <b>RONALD J. EIDSON</b> J.C.</p> <p>Certificate No. <b>GARY EIDSON 12641</b> <b>RONALD J. EIDSON 3239</b></p>			

SECTION 12, TOWNSHIP 20 SOUTH, RANGE 38 EAST, N.M.P.M.,  
LEA COUNTY, NEW MEXICO



DIRECTIONS TO LOCATION

FROM THE INTERSECTION OF ST. HWY. #18 AND  
CO. RD. #H45 (WATER DOG), GO EAST ON WATER  
DOG FOR APPROX. 0.7 MILES. CONTINUE EAST ON  
A LEASE ROAD APPROX. 0.4 MILES; TURN RIGHT  
AND GO SOUTH APPROX. 0.1 MILE TO A  
PROPOSED ROAD SURVEY. FOLLOW PROPOSED  
ROAD SURVEY WEST FOR 203 FEET TO THIS  
LOCATION.



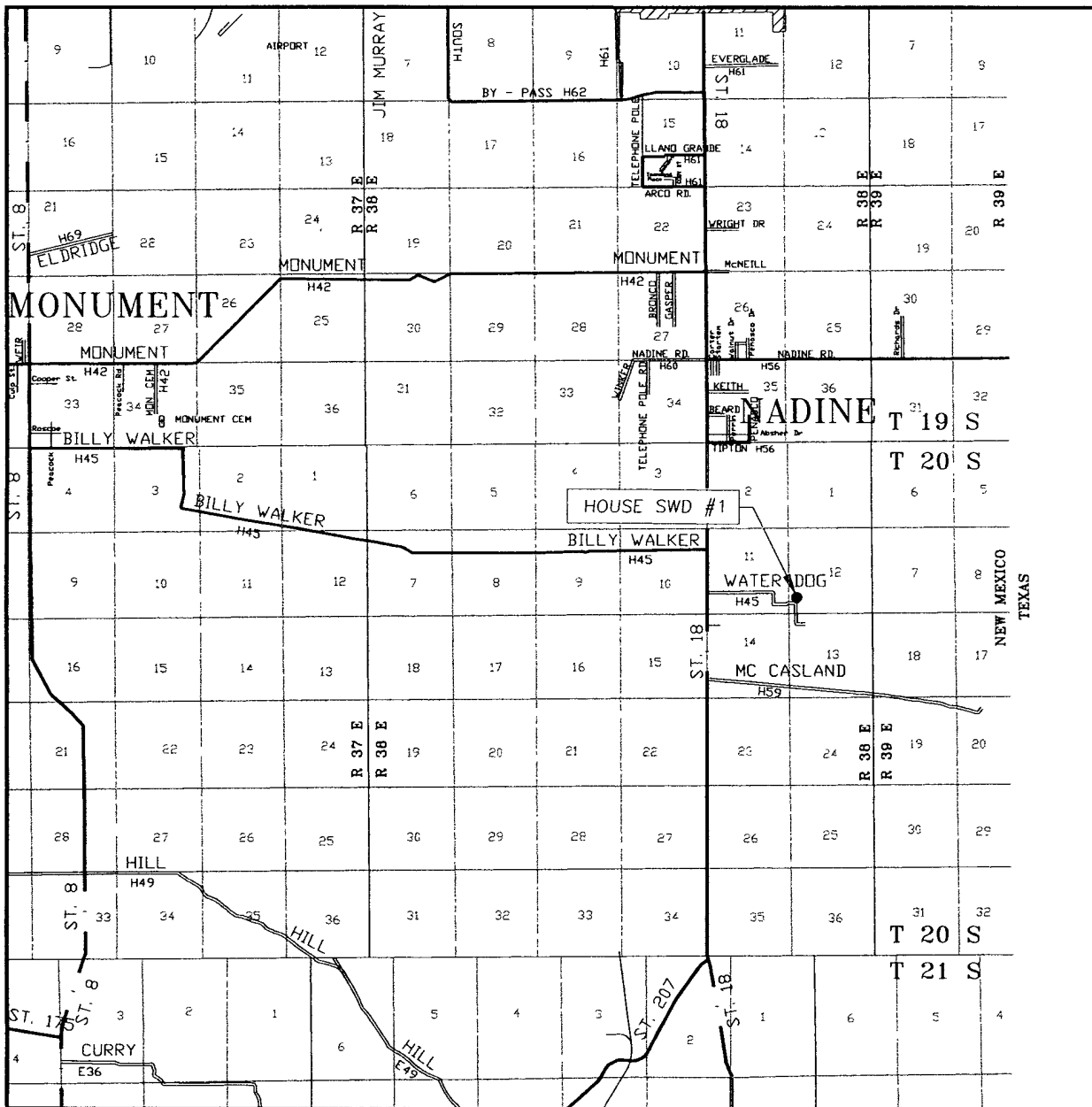
PROVIDING SURVEYING SERVICES  
SINCE 1946  
**JOHN WEST SURVEYING COMPANY**  
412 N. DAL PASO  
HOBBS, N.M. 88240  
(505) 393-3117

APACHE CORPORATION

HOUSE SWD #1WELL  
LOCATED 990 FEET FROM THE SOUTH LINE  
AND 500 FEET FROM THE WEST LINE OF SECTION 12,  
TOWNSHIP 20 SOUTH, RANGE 38 EAST, N.M.P.M.,  
LEA COUNTY, NEW MEXICO

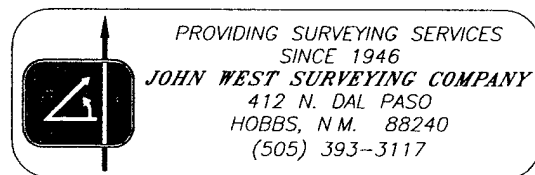
Survey Date: 09/16/08	Sheet 1 of 1 Sheets
W.O. Number: 08.11.1487	Dr By: JC
Date: 09/17/08	08111487
	Scale: 1"=100'

# VICINITY MAP

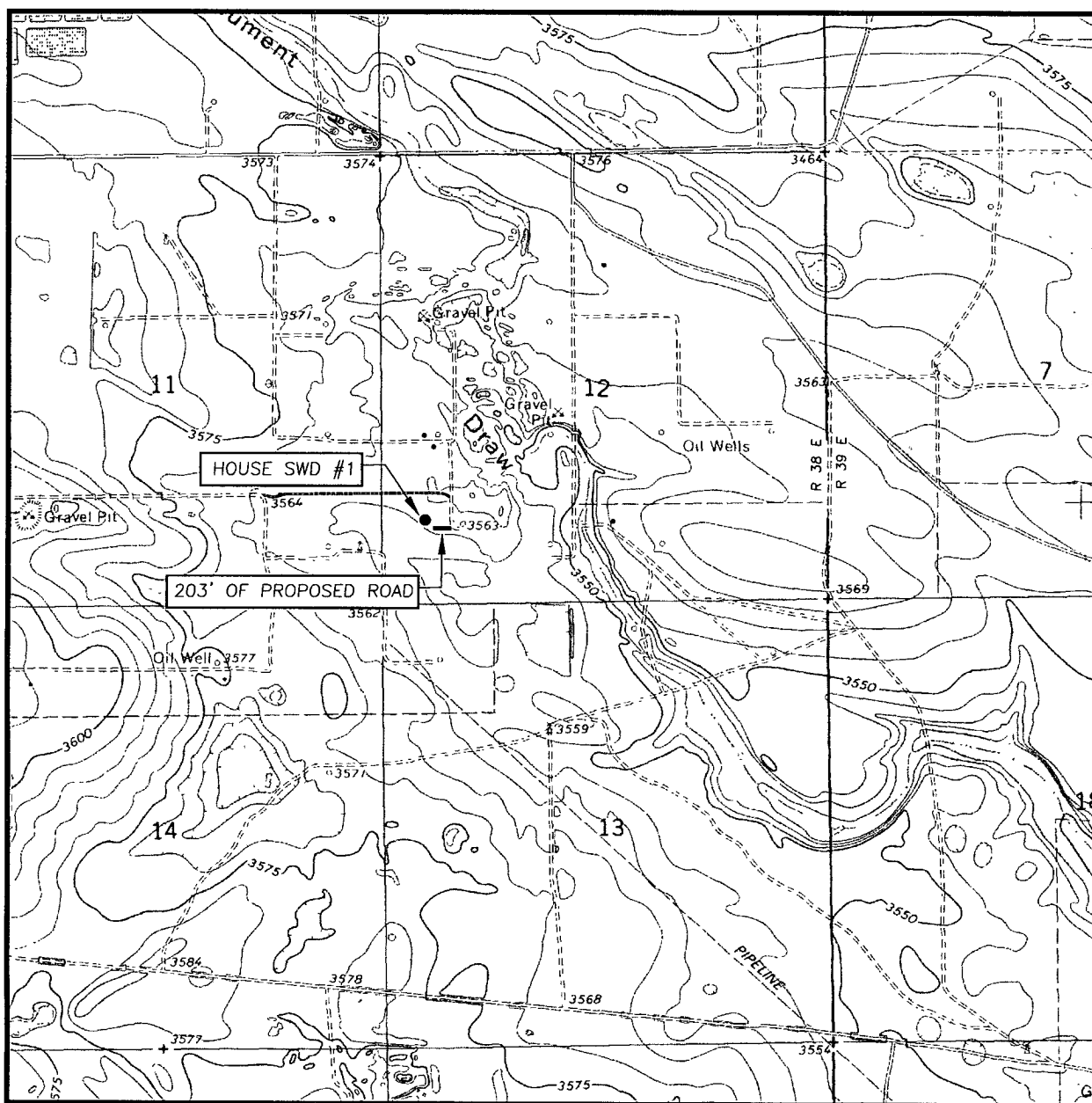


SCALE: 1" = 2 MILES

SEC. 12 TWP. 20-S RGE. 38-E  
 SURVEY N.M.P.M.  
 COUNTY LEA STATE NEW MEXICO  
 DESCRIPTION 990' FSL & 500' FWL  
 ELEVATION 3563'  
 OPERATOR APACHE CORPORATION  
 LEASE HOUSE SWD



# LOCATION VERIFICATION MAP



SCALE: 1" = 2000'

CONTOUR INTERVAL:  
HOBBS SE, N.M. - 5'

SEC. 12 TWP. 20-S RGE. 38-E

SURVEY N.M.P.M.

COUNTY LEA STATE NEW MEXICO

DESCRIPTION 990' FSL & 500' FWL

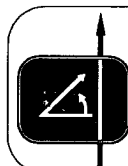
ELEVATION 3563'

OPERATOR APACHE CORPORATION

LEASE HOUSE SWD

U.S.G.S. TOPOGRAPHIC MAP

HOBBS SE, N.M.



PROVIDING SURVEYING SERVICES  
SINCE 1946  
**JOHN WEST SURVEYING COMPANY**  
412 N. DAL PASO  
HOBBS, N.M. 88240  
(505) 393-3117