

DISTRICT I  
1625 N. FRENCH DR., HOBBS, NM 88240

DISTRICT II  
1301 W. GRAND AVENUE, ARTESIA, NM 88210

DISTRICT III  
1000 Rio Brazos Rd., Aztec, NM 87410

DISTRICT IV  
1220 S. ST. FRANCIS DR., SANTA FE, NM 87505

State of New Mexico  
Energy, Minerals and Natural Resources Department

OIL CONSERVATION DIVISION  
1220 SOUTH ST. FRANCIS DR.  
Santa Fe, New Mexico 87505

Form C-102  
Revised October 12, 2005  
Submit to Appropriate District Office  
State Lease - 4 Copies  
Fee Lease - 3 Copies

WELL LOCATION AND ACREAGE DEDICATION PLAT

☐ AMENDED REPORT

API Number <b>30-025-39197</b>	Pool Code <b>32300</b>	Pool Name <b>Hobbs San Andres, EAST</b>
Property Code <b>300385</b>	Property Name <b>EAST HOBBS SAN ANDRES UNIT</b>	Well Number <b>513</b>
GRID No. <b>220420</b>	Operator Name <b>ARENA RESOURCES, INC.</b>	Elevation <b>3599'</b>

Surface Location

UL or lot No.	Section	Township	Range	Lot Idn	Feet from the	North/South line	Feet from the	East/West line	County
L	29	18-S	39-E		1450	SOUTH	1200	WEST	LEA

Bottom Hole Location If Different From Surface

UL or lot No.	Section	Township	Range	Lot Idn	Feet from the	North/South line	Feet from the	East/West line	County
Dedicated Acres <b>40</b>	Joint or Infill	Consolidation Code	Order No.						

NO ALLOWABLE WILL BE ASSIGNED TO THIS COMPLETION UNTIL ALL INTERESTS HAVE BEEN CONSOLIDATED  
OR A NON-STANDARD UNIT HAS BEEN APPROVED BY THE DIVISION

		LOT 1	
		25.91 AC	
	GEODETTIC COORDINATES NAD 27 NME  Y=626163.4 N X=888044.4 E  LAT.=32.715072° N LONG.=103.071709° W	LOT 2	
		25.94 AC	
		LOT 3	
		25.96 AC	
		LOT 4	
		25.99 AC	

NEW MEXICO  
TEXAS

1200'

1450'

**OPERATOR CERTIFICATION**

I hereby certify that the information herein is true and complete to the best of my knowledge and belief, and that this organization either owns a working interest or unleased mineral interest in the land including the proposed bottom hole location or has a right to drill this well at this location pursuant to a contract with an owner of such mineral or working interest, or to a voluntary pooling agreement or a compulsory pooling order heretofore entered by the division.

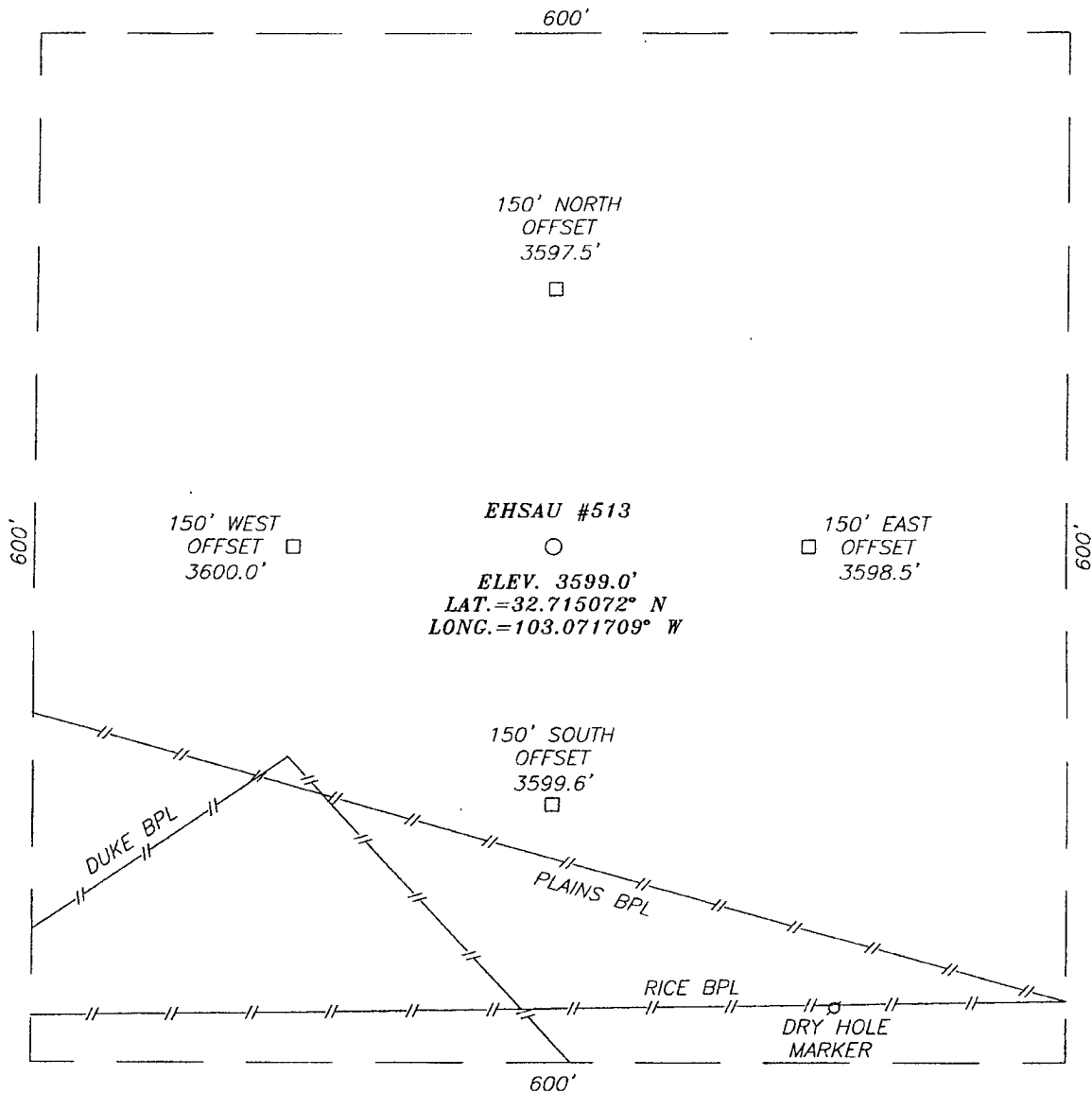
*Colleen Robinson* 10-9-08  
Signature Date  
Colleen Robinson  
Printed Name

**SURVEYOR CERTIFICATION**

I hereby certify that the well location shown on this plat was plotted from field notes of actual surveys made by me or under my supervision, and that the same is true and correct to the best of my belief.

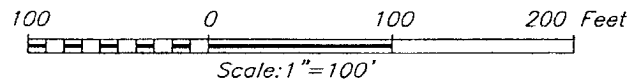
RONALD J. EIDSON  
DECEMBER 11, 2007  
Date Surveyed  
Signature & Seal of Professional Surveyor  
12/27/07  
Certificate No. GARY EIDSON 12641  
RONALD J. EIDSON 3239

**SECTION 29, TOWNSHIP 18 SOUTH, RANGE 39 EAST, N.M.P.M.,**  
 LEA COUNTY, NEW MEXICO



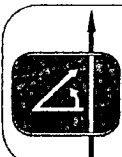
**DIRECTIONS TO LOCATION**

FROM THE INTERSECTION OF U.S. HWY. 62-180 AND CO. RD. H-54 (WAYLON RD.), GO SOUTH ON WAYLON RD. APPROX. 0.7 MILES TO A "Y" INTERSECTION. TURN LEFT AND GO SOUTHEAST APPROX. 0.2 MILES. VEER LEFT AND GO NORTHEAST APPROX. 0.1 MILES. VEER RIGHT AND GO NORTHEAST APPROX. 0.1 MILES (THROUGH CATTLE GUARD). VEER RIGHT AND GO EAST APPROX. 0.1 MILES TO A "T" INTERSECTION. TURN LEFT AND GO NORTH APPROX. 0.1 MILES. THIS LOCATION IS APPROX. 400 FEET WEST.



**ARENA RESOURCES, INC.**

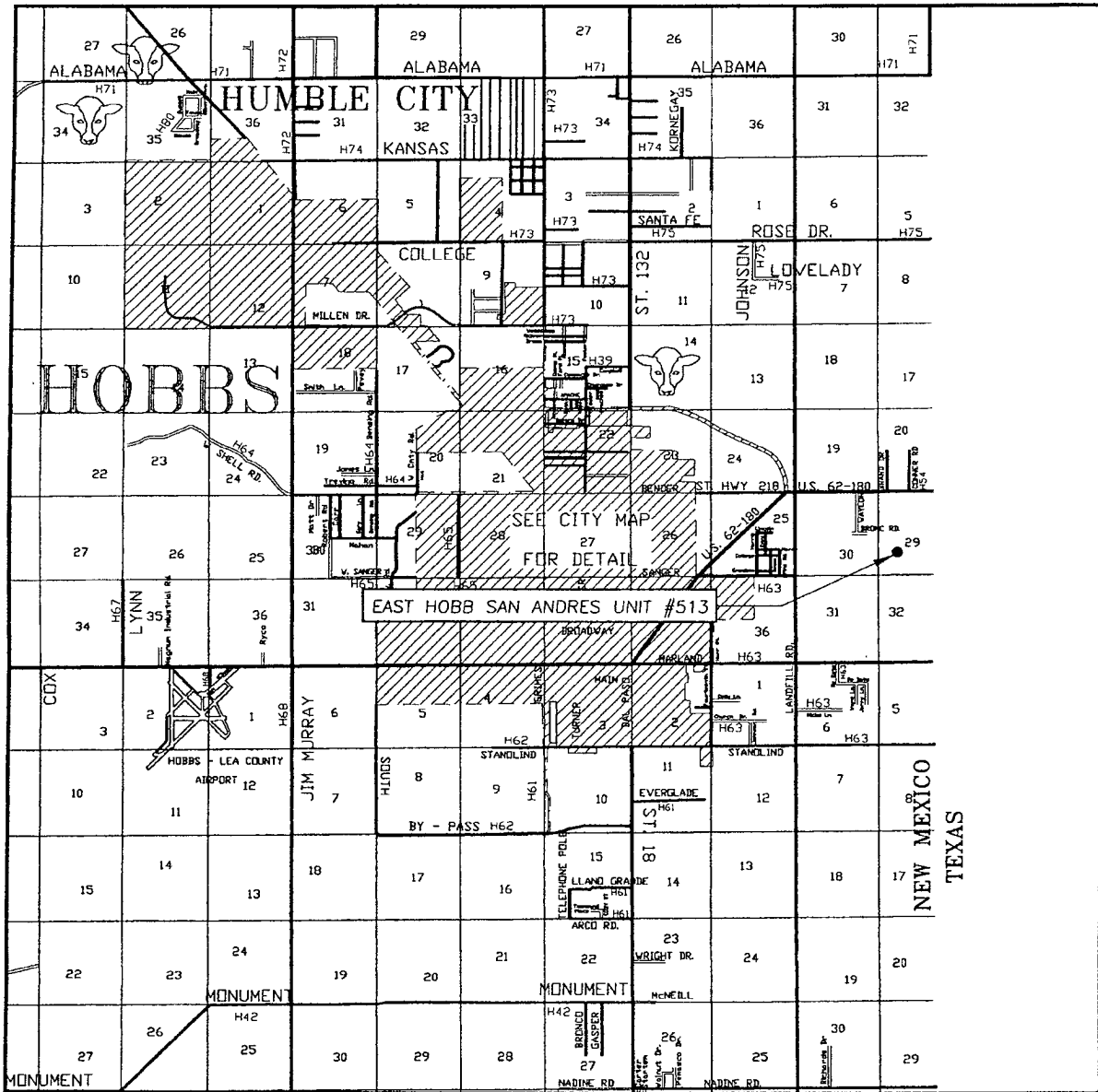
EHS AU #513  
 LOCATED 1450 FEET FROM THE SOUTH LINE  
 AND 1200 FEET FROM THE WEST LINE OF SECTION 29,  
 TOWNSHIP 18 SOUTH, RANGE 39 EAST, N.M.P.M.,  
 LEA COUNTY, NEW MEXICO.



PROVIDING SURVEYING SERVICES  
 SINCE 1946  
**JOHN WEST SURVEYING COMPANY**  
 412 N. DAL PASO  
 HOBBS, N.M. 88240  
 (505) 393-3117

Survey Date: 12/17/07	Sheet 1 of 1 Sheets
W.O. Number: 07.11.1783	Dr By: LA
Date: 12/28/07	07111783
	Scale: 1"=100'

# VICINITY MAP



SCALE: 1" = 2 MILES

SEC. 29 TWP. 18-S RGE. 39-E

SURVEY N.M.P.M.

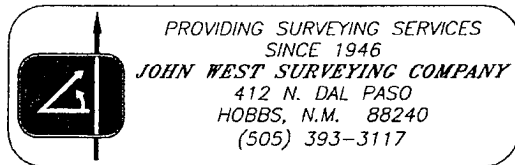
COUNTY LEA STATE NEW MEXICO

DESCRIPTION 1450' FSL & 1200' FWL

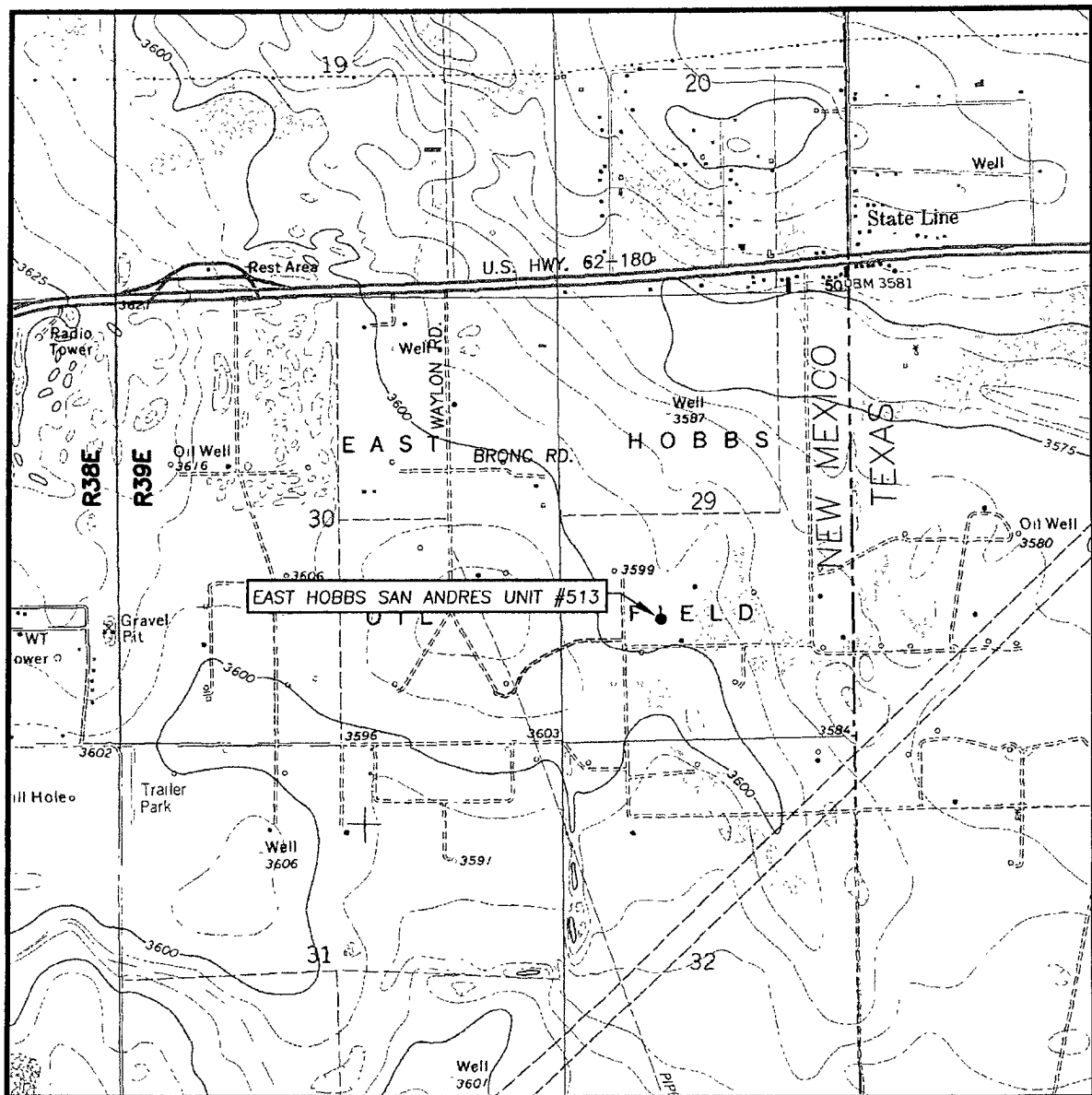
ELEVATION 3599'

OPERATOR ARENA RESOURCES, INC.

LEASE EAST HOBBS SAN ANDRES UNIT



# LOCATION VERIFICATION MAP



SCALE: 1" = 2000'

CONTOUR INTERVAL:  
HOBBS EAST, N.M. - 5'

SEC. 29 TWP. 18-S RGE. 39-E

SURVEY N.M.P.M.

COUNTY LEA STATE NEW MEXICO

DESCRIPTION 1450' FSL & 1200' FWL

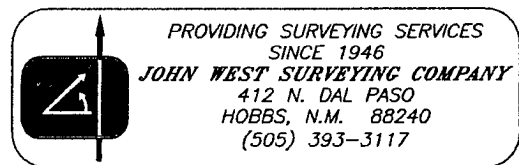
ELEVATION 3599'

OPERATOR ARENA RESOURCES, INC.

LEASE EAST HOBBS SAN ANDRES UNIT

U.S.G.S. TOPOGRAPHIC MAP

HOBBS EAST, N.M.



PROVIDING SURVEYING SERVICES  
SINCE 1946  
**JOHN WEST SURVEYING COMPANY**  
412 N. DAL PASO  
HOBBS, N.M. 88240  
(505) 393-3117