

DISTRICT I

1025 N. FRENCH DR., HOBBS, NM 88240

DISTRICT II

1301 W. GRAND AVENUE, ARTESIA, NM 88210

DISTRICT III

1000 Rio Brazos Rd., Aztec, NM 87410

DISTRICT IV

1220 S. ST. FRANCIS DR., SANTA FE, NM 87505

State of New Mexico

Energy, Minerals and Natural Resources Department

OIL CONSERVATION DIVISION

1220 SOUTH ST. FRANCIS DR.

Santa Fe, New Mexico 87505

Form C-102

Revised October 12, 2005

Submit to Appropriate District Office

State Lease - 4 Copies

Fee Lease - 3 Copies

WELL LOCATION AND ACREAGE DEDICATION PLAT

☐ AMENDED REPORT

API Number 30-025-39200	Pool Code 37240	Pool Name Langlie Mattix; 7 RURS-Q-Grayburg
Property Code 304315	Property Name LANGLIE MATTIX QUEEN UNIT	Well Number 46
GRID No. 220420	Operator Name ARENA RESOURCES, INC.	Elevation 3084'

Surface Location

UL or lot No.	Section	Township	Range	Lot Idn	Feet from the	North/South line	Feet from the	East/West line	County
A	22	25-S	37-E		330	NORTH	330	EAST	LEA

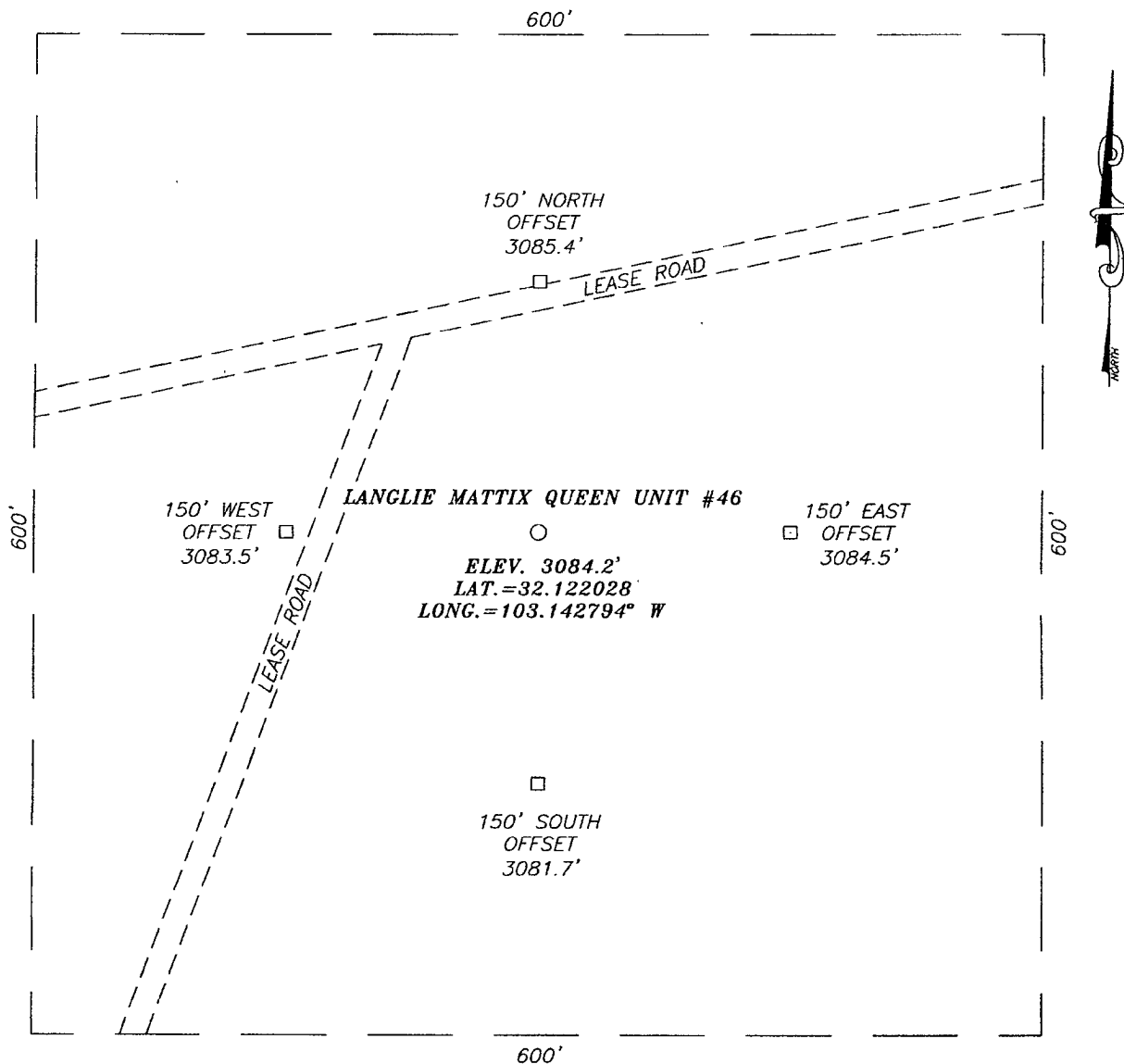
Bottom Hole Location If Different From Surface

UL or lot No.	Section	Township	Range	Lot Idn	Feet from the	North/South line	Feet from the	East/West line	County
Dedicated Acres 40	Joint or Infill	Consolidation Code	Order No.						

NO ALLOWABLE WILL BE ASSIGNED TO THIS COMPLETION UNTIL ALL INTERESTS HAVE BEEN CONSOLIDATED
OR A NON-STANDARD UNIT HAS BEEN APPROVED BY THE DIVISION

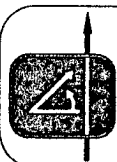
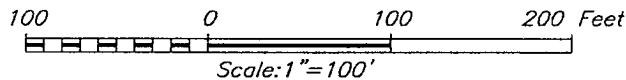
<p>330'</p> <p>330'</p> <p>GEODETTIC COORDINATES NAD 27 NME</p> <p>Y=410152.7 N X=868583.0 E</p> <p>LAT.=32.122028° N LONG.=103.142794° W</p>	<p>OPERATOR CERTIFICATION</p> <p>I hereby certify that the information herein is true and complete to the best of my knowledge and belief, and that this organization either owns a working interest or unleased mineral interest in the land including the proposed bottom hole location or has a right to drill this well at this location pursuant to a contract with an owner of such mineral or working interest, or to a voluntary pooling agreement or a compulsory pooling order heretofore entered by the division.</p> <p><i>Colleen Robinson</i> 10-9-08 Signature Date</p> <p>COLLEEN ROBINSON Printed Name</p>	
	<p>SURVEYOR CERTIFICATION</p> <p>I hereby certify that the well location shown on this plat was plotted from field notes of actual surveys made by me or under my supervision, and that the same is true and correct to the best of my belief.</p> <p>RONALD J. EIDSON Date Surveyed SEPTEMBER 22, 2008 JC</p> <p>Signature & Seal of Professional Surveyor <i>Ronald J. Eidson</i> 9/26/08</p>	
	<p>Certificate No. GARY EIDSON 12641 RONALD J. EIDSON 3239</p>	

SECTION 22, TOWNSHIP 25 SOUTH, RANGE 37 EAST, N.M.P.M.,
 LEA COUNTY, NEW MEXICO



DIRECTIONS TO LOCATION

FROM THE INTERSECTION OF HWY. #128 AND WILLIS ROAD, GO SOUTH ON WILLIS ROAD APPROX. 100 FEET. TURN RIGHT AT LEASE ROAD AND GO SOUTHWEST APPROX. 330 FEET. THIS LOCATION IS APPROX. 140 FEET SOUTH.



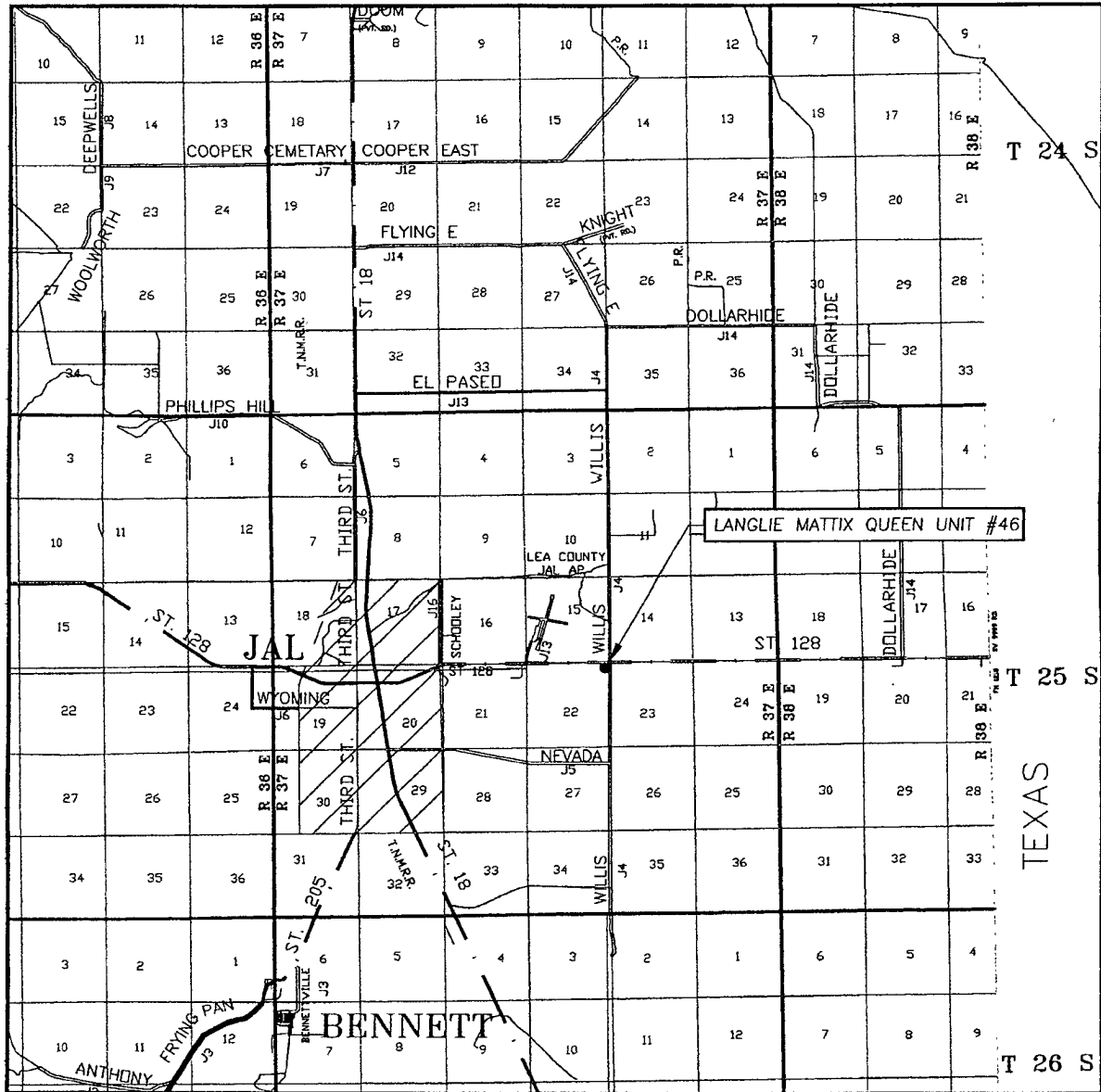
PROVIDING SURVEYING SERVICES
 SINCE 1946
JOHN WEST SURVEYING COMPANY
 412 N. DAL PASO
 HOBBS, N.M. 88240
 (505) 393-3117

ARENA RESOURCES, INC.

LANGLIE MATTIX QUEEN UNIT #46 WELL
 LOCATED 330 FEET FROM THE NORTH LINE
 AND 330 FEET FROM THE EAST LINE OF SECTION 22,
 TOWNSHIP 25 SOUTH, RANGE 37 EAST, N.M.P.M.,
 LEA COUNTY, NEW MEXICO.

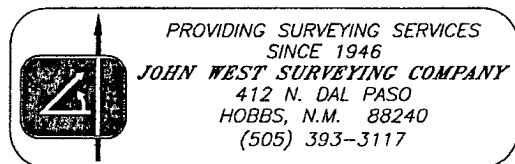
Survey Date: 9/22/08	Sheet 1 of 1 Sheets
W.O. Number: 08.11.1415	Dr By: JC
Date: 9/25/08	08111415
	Scale: 1"=100'

VICINITY MAP

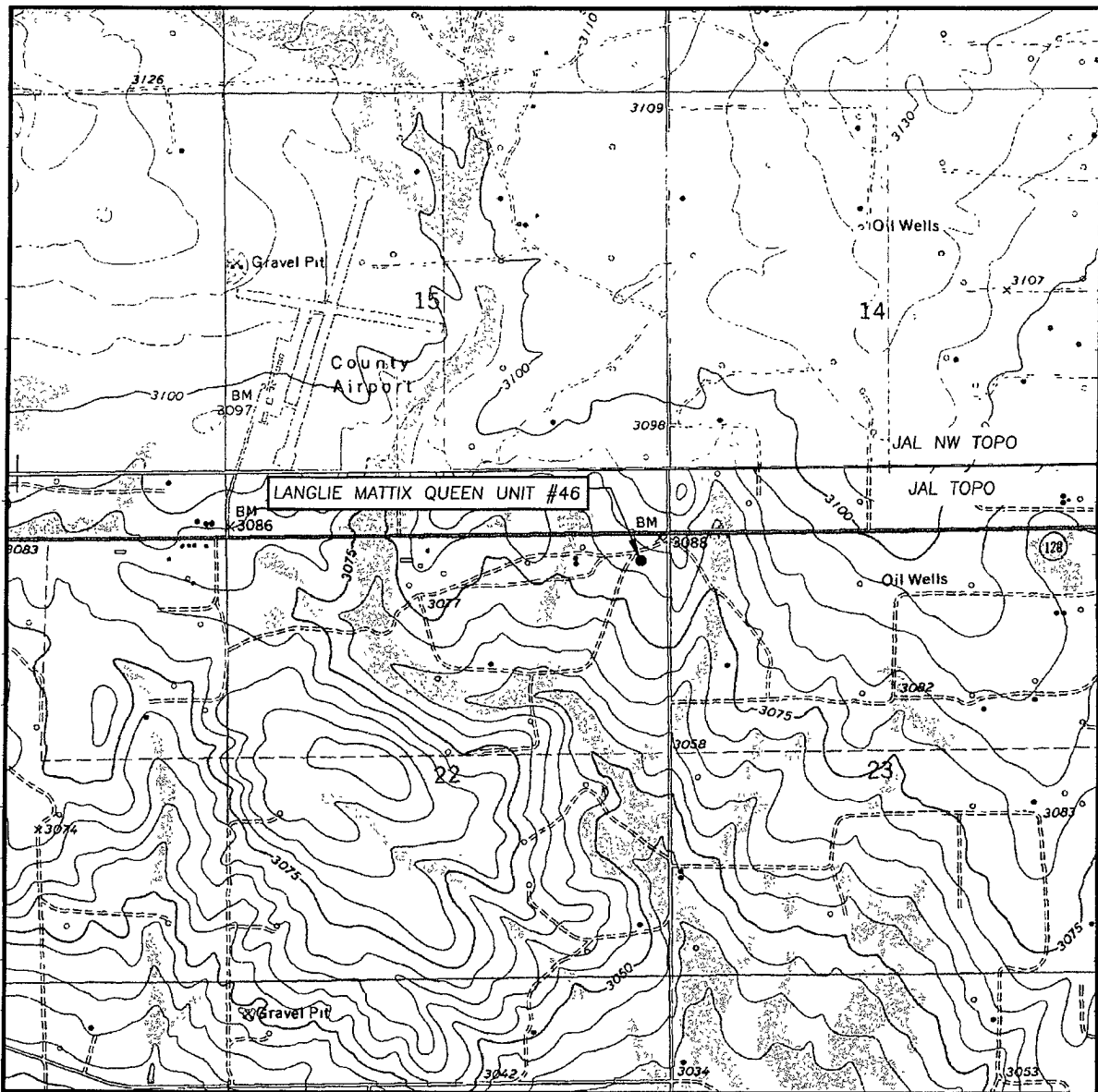


SCALE: 1" = 2 MILES

SEC. 22 TWP. 25-S RGE. 37-E
 SURVEY N.M.P.M.
 COUNTY LEA STATE NEW MEXICO
 DESCRIPTION 330' FNL & 330' FEL
 ELEVATION 3084'
 OPERATOR ARENA RESOURCES, INC.
 LEASE LANGLIE MATTIX QUEEN UNIT



LOCATION VERIFICATION MAP



SCALE: 1" = 2000'

CONTOUR INTERVAL:

JAL, N.M. - 5'

JAL NW, N.M. - 10'

SEC. 22 TWP. 25-S RGE. 37-E

SURVEY N.M.P.M.

COUNTY LEA STATE NEW MEXICO

DESCRIPTION 330' FNL & 330' FEL

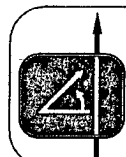
ELEVATION 3084'

OPERATOR ARENA RESOURCES, INC.

LEASE LANGLIE MATTIX QUEEN UNIT

U.S.G.S. TOPOGRAPHIC MAP

JAL, N.M.



PROVIDING SURVEYING SERVICES
SINCE 1946
JOHN WEST SURVEYING COMPANY
412 N. DAL PASO
HOBBS, N.M. 88240
(505) 393-3117