

DISTRICT I
P.O. Box 1080, Hobbs, NM 88241-1080

DISTRICT II
P.O. Drawer DD, Artesia, NM 88211-0710

DISTRICT III
1000 Rio Brazos Rd., Artesia, NM 87410

DISTRICT IV
P.O. Box 2088, Santa Fe, N.M. 87504-2088

State of New Mexico
Energy, Minerals and Natural Resources Department

Form C-102
Revised February 10, 1994
Submit to Appropriate District Office
State Lease - 4 Copies
Fee Lease - 3 Copies

OIL CONSERVATION DIVISION

P.O. Box 2088

Santa Fe, New Mexico 87504-2088

WELL LOCATION AND ACREAGE DEDICATION PLAT

☐ AMENDED REPORT

API Number 30-025-36307	Pool Code 97270	Pool Name Tamaro	Delaware
Property Code 32507	Property Name PANTHER FEDERAL		Well Number 1
OGRID No. 013837	Operator Name MACK ENERGY CORPORATION		Elevation 3630'

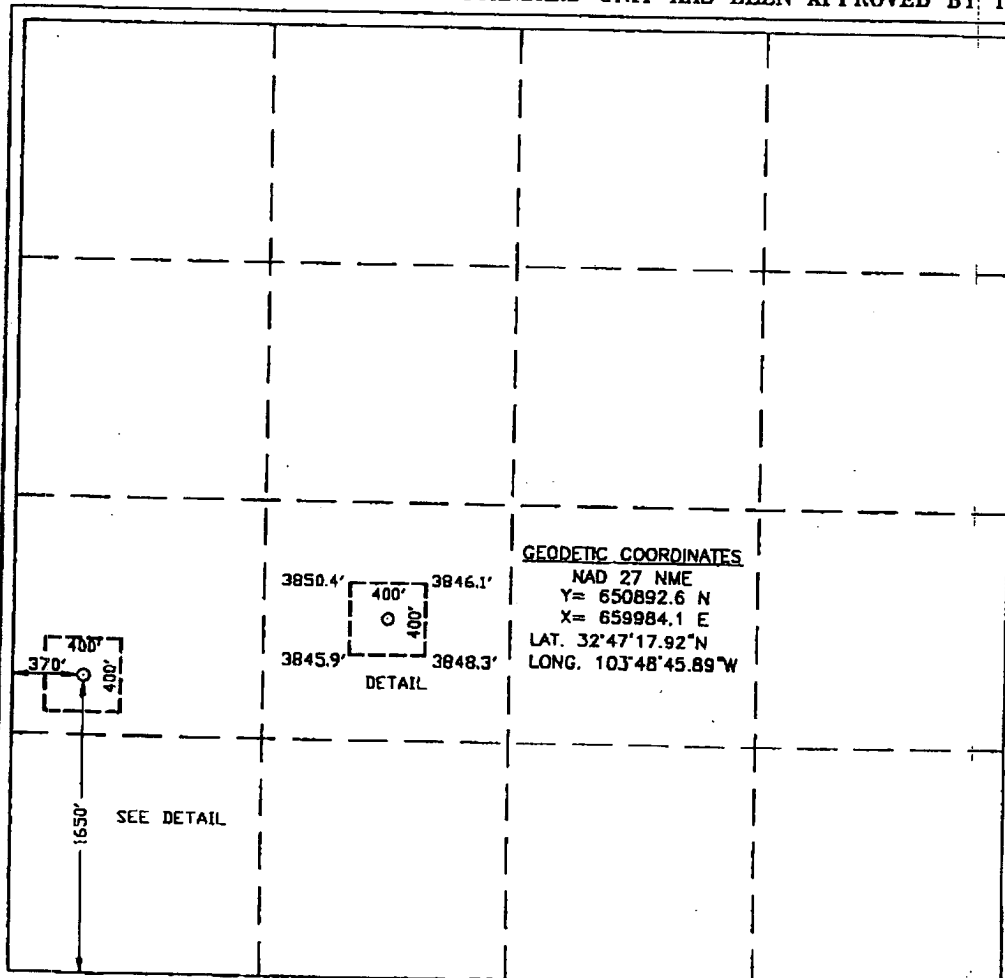
Surface Location

UL or lot No. L	Section 31	Township 17-S	Range 32-E	Lot Idn	Feet from the 1650'	North/South line SOUTH	Feet from the 370'	East/West line WEST	County LEA
--------------------	---------------	------------------	---------------	---------	------------------------	---------------------------	-----------------------	------------------------	---------------

Bottom Hole Location If Different From Surface

UL or lot No.	Section	Township	Range	Lot Idn	Feet from the	North/South line	Feet from the	East/West line	County
Dedicated Acres 40	Joint or Infill	Consolidation Code	Order No.						

NO ALLOWABLE WILL BE ASSIGNED TO THIS COMPLETION UNTIL ALL INTERESTS HAVE BEEN CONSOLIDATED
OR A NON-STANDARD UNIT HAS BEEN APPROVED BY THE DIVISION



OPERATOR CERTIFICATION

I hereby certify the the information
contained herein is true and complete to the
best of my knowledge and belief.

Jerry W. Sherrell
Signature

Jerry W. Sherrell
Printed Name

Production Clerk
Title

11/14/2003
Date

SURVEYOR CERTIFICATION

I hereby certify that the well location shown
on this plat was plotted from field notes of
actual surveys made by me or under my
supervision, and that the same is true and
correct to the best of my belief.

June 20, 2003

Date Surveyed A.W.B

Signature of Surveyor

Professional Surveyor

NEW MEXICO

03.11.0689

Certificate No. RONALD L. EIDSON 3239

CARY EIDSON 12641