

DISTRICT I  
1625 N. FRENCH DR., HOBBES, NM 86240

State of New Mexico  
Energy, Minerals and Natural Resources Department

Form C-102

DISTRICT II  
1301 W. GRAND AVENUE, ARTESIA, NM 88210

**OIL CONSERVATION DIVISION**  
1220 SOUTH ST. FRANCIS DR.  
Santa Fe, New Mexico 87505

Revised October 12, 2005  
Submit to Appropriate District Office  
State Lease - 4 Copies  
Fee Lease - 3 Copies

DISTRICT III  
1000 Rio Brazos Rd., Aztec, NM 87410

DISTRICT IV  
1220 S. ST. FRANCIS DR., SANTA FE, NM 87505

**WELL LOCATION AND ACREAGE DEDICATION PLAT**

☐ AMENDED REPORT

API Number <b>30-025-38851</b>	Pool Code <b>50350</b>	Pool Name <i>Penrose Kelly Grayburg</i>
Property Code <b>2607</b>	Property Name <b>EAVES</b>	Well Number <b>9</b>
OGRID No. <b>4323</b>	Operator Name <b>CHEVRON USA INC.</b>	Elevation <b>3377</b>

**Surface Location**

UL or lot No.	Section	Township	Range	Lot Idn	Feet from the	North/South line	Feet from the	East/West line	County
H	10	22-S	37-E		1395	NORTH	330	EAST	LEA

**Bottom Hole Location If Different From Surface**

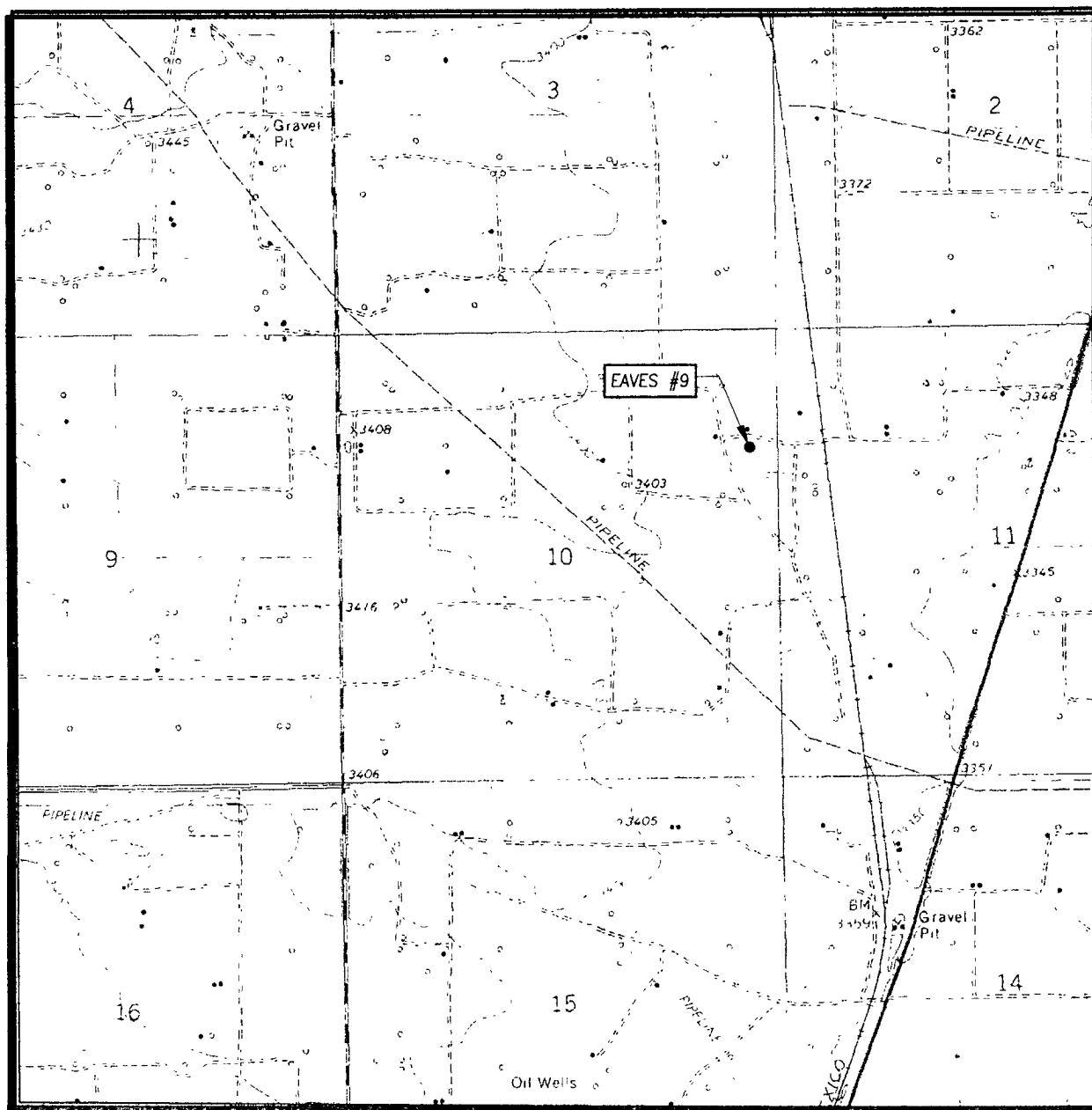
UL or lot No.	Section	Township	Range	Lot Idn	Feet from the	North/South line	Feet from the	East/West line	County

Dedicated Acres <b>40</b>	Joint or Infill	Consolidation Code	Order No. <b>NSL-5809</b>
------------------------------	-----------------	--------------------	------------------------------

NO ALLOWABLE WILL BE ASSIGNED TO THIS COMPLETION UNTIL ALL INTERESTS HAVE BEEN CONSOLIDATED  
OR A NON-STANDARD UNIT HAS BEEN APPROVED BY THE DIVISION

<div style="text-align: center;"><p>GEODETIC COORDINATES NAD 27 NME</p><p>Y=514808.2 N X=867350.7 E</p><p>LAT.=32.409699° N LONG.=103.143024° W</p></div>	<div style="text-align: right;"><p>1395'</p><p>330'</p></div>	<b>OPERATOR CERTIFICATION</b> <i>I hereby certify that the information herein is true and complete to the best of my knowledge and belief, and that this organization either owns a working interest or unleased mineral interest in the land including the proposed bottom hole location or has a right to drill this well at this location pursuant to a contract with an owner of such mineral or working interest, or to a voluntary pooling agreement or a compulsory pooling order heretofore entered by the division.</i> <i>Denise Pinkerton</i> 4-1-08 Signature Date <i>Denise Pinkerton</i> Printed Name	
			<b>SURVEYOR CERTIFICATION</b> <i>I hereby certify that the well location shown on this plat was plotted from field notes of actual surveys made by me or under my supervision, and that the same is true and correct to the best of my belief.</i>
			<div style="text-align: center;"><p>RONALD G. EIDSON</p><p>OCTOBER 9, 2007</p><p>Date Surveyed 3239</p><p>Signature &amp; Seal of Professional Surveyor</p><p><i>Ronald G. Eidson</i> 10/16/07 07.11.1317</p></div>
			Certificate No. GARY EIDSON 12841

# LOCATION VERIFICATION MAP



SCALE: 1" = 2000'

CONTOUR INTERVAL:  
EUNICE, N.M. - 10'

SEC. 10 TWP. 22-S RGE. 37-E

SURVEY N.M.P.M.

COUNTY LEA STATE NEW MEXICO

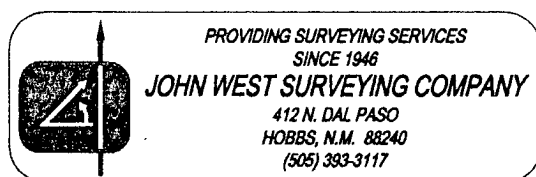
DESCRIPTION 1395' FNL & 330' FEL

ELEVATION 3377'

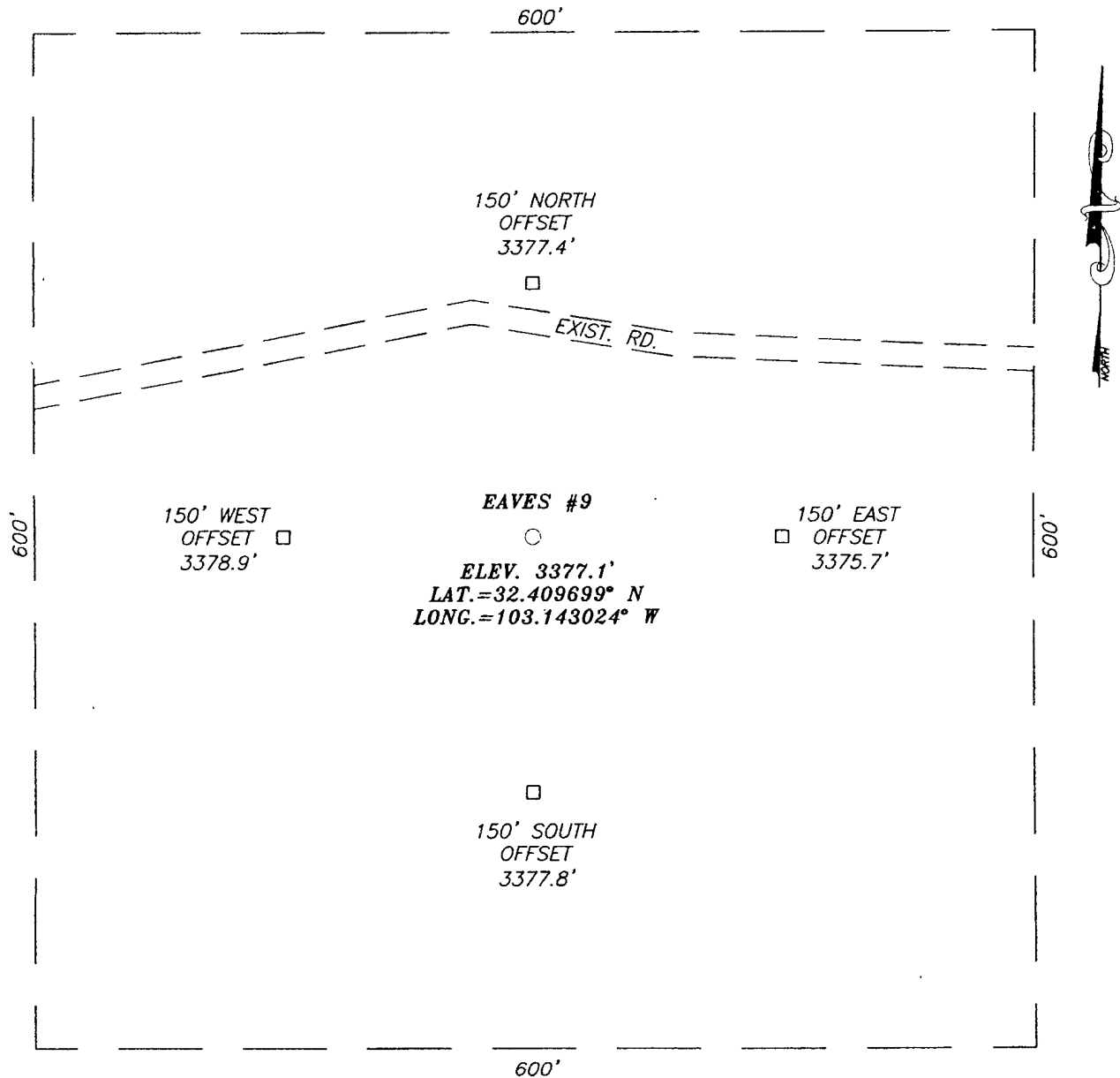
OPERATOR CHEVRON USA

LEASE EAVES

U.S.G.S. TOPOGRAPHIC MAP  
EUNICE, N.M.

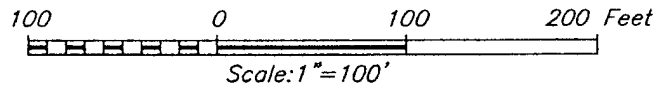


SECTION 10, TOWNSHIP 22 SOUTH, RANGE 37 EAST, N.M.P.M.,  
LEA COUNTY, NEW MEXICO



DIRECTIONS TO LOCATION

FROM THE INTERSECTION OF STATE HWY. 234 AND STATE HWY. 207, GO SOUTH ON STATE HWY. 207 APPROX. 1.65 MILES. TURN LEFT (EAST) AND GO APPROX. 0.85 MILES. ROAD TURNS RIGHT (SOUTH), GO APPROX. 0.1 MILE. ROAD TURNS LEFT (EAST), GO APPROX. 200 FEET. THIS LOCATION IS APPROX. 200 FEET RIGHT (SOUTH).



**CHEVRON USA INC.**

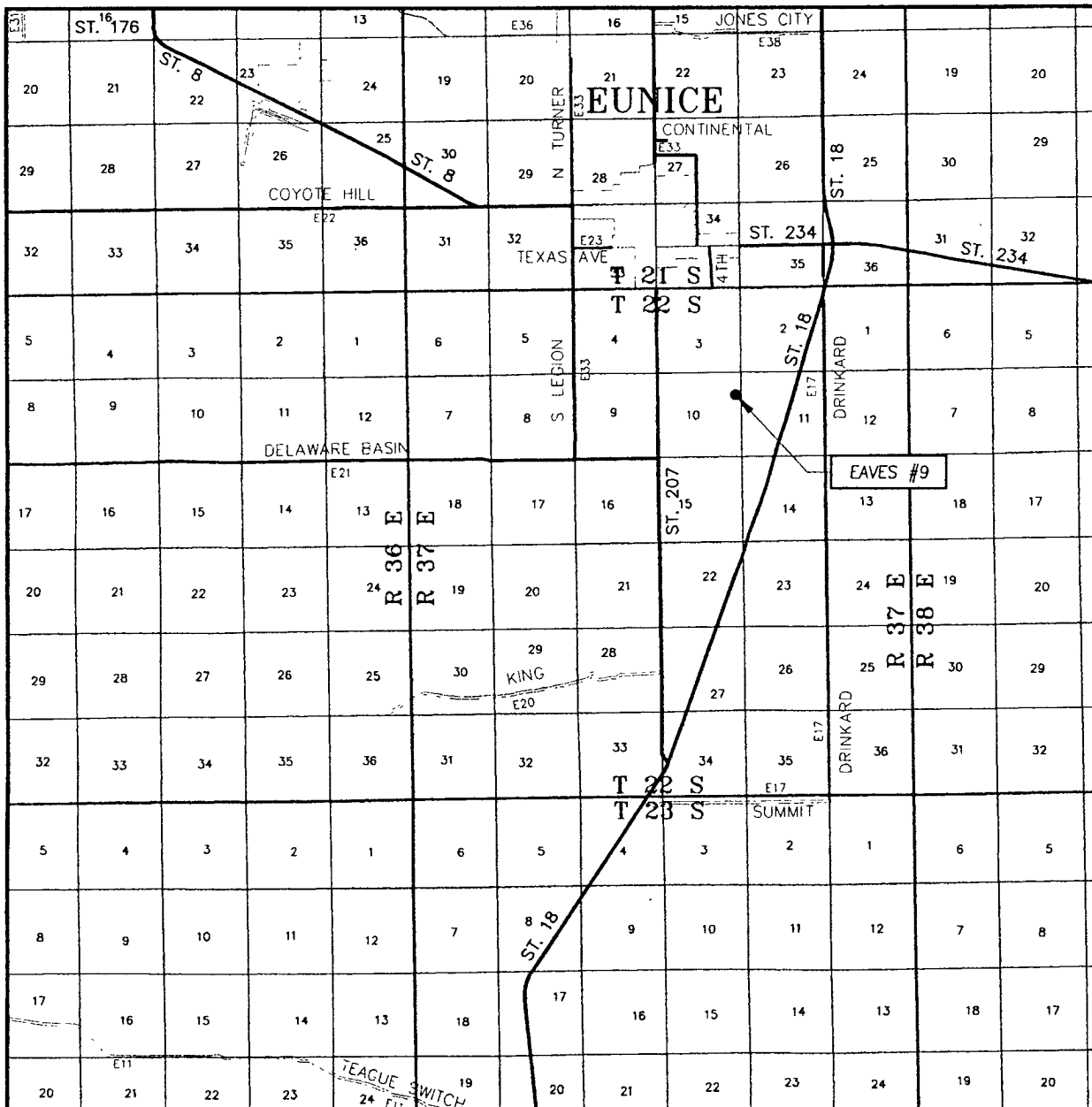
EAVES #9 WELL  
LOCATED 1395 FEET FROM THE NORTH LINE  
AND 330 FEET FROM THE EAST LINE OF SECTION 10,  
TOWNSHIP 22 SOUTH, RANGE 37 EAST, N.M.P.M.,  
LEA COUNTY, NEW MEXICO.



PROVIDING SURVEYING SERVICES  
SINCE 1946  
**JOHN WEST SURVEYING COMPANY**  
412 N. DAL PASO  
HOBBS, N.M. 88240  
(505) 393-3117


Survey Date: 10/9/07	Sheet 1 of 1 Sheets
W.O. Number: 07.11.1317	Dr By: DSS
Date: 10/15/07	Rev 1: N/A
Disk: .	07111317
	Scale: 1"=100'

# VICINITY MAP



SCALE: 1" = 2 MILES

SEC. 10 TWP. 22-S RGE. 37-E  
 SURVEY N.M.P.M.  
 COUNTY LEA STATE NEW MEXICO  
 DESCRIPTION 1395' FNL & 330' FEL  
 ELEVATION 3377'  
 OPERATOR CHEVRON USA INC.  
 LEASE EAVES



PROVIDING SURVEYING SERVICES  
 SINCE 1946  
**JOHN WEST SURVEYING COMPANY**  
 412 N. DAL PASO  
 HOBBS, N.M. 88240  
 (505) 393-3117