

RECEIVED

State of New Mexico

DISTRICT I

1625 N. FRENCH DR., HOBBS, NM 88440

Energy, Minerals and Natural Resources Department

Form C-102

Revised October 12, 2005

Submit to Appropriate District Office

State Lease - 4 Copies

Fee Lease - 3 Copies

DISTRICT II

1301 W. GRAND AVENUE, AZTEC, NM 87410

OIL CONSERVATION DIVISION

1220 SOUTH ST. FRANCIS DR.
Santa Fe, New Mexico 87505

DISTRICT III

1000 Rio Brazos Rd., Aztec, NM 87410

DISTRICT IV

1220 S. ST. FRANCIS DR., SANTA FE, NM 87505

WELL LOCATION AND ACREAGE DEDICATION PLAT

☐ AMENDED REPORT

API Number 30-025-39209	Pool Code 32300	Pool Name Hobbs, San Andres, EAST
Property Code 30038	Property Name EAST HOBBS SAN ANDRES UNIT	Well Number 999
OGRID No. 220420	Operator Name ARENA RESOURCES, INC.	Elevation 3592'

Surface Location

UL or lot No.	Section	Township	Range	Lot Idn	Feet from the	North/South line	Feet from the	East/West line	County
A	31	18-S	39-E		990	NORTH	990	EAST	LEA

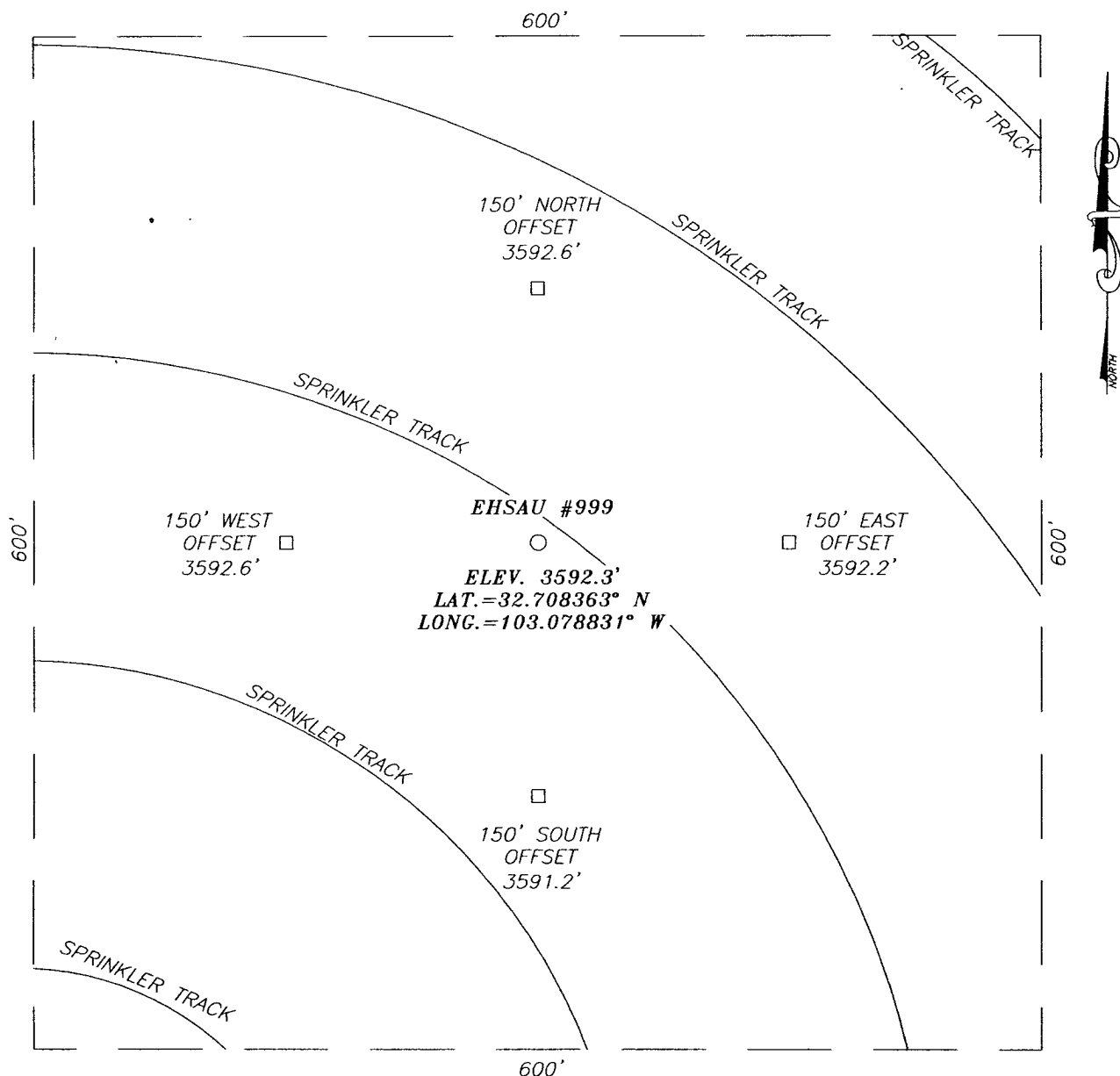
Bottom Hole Location If Different From Surface

UL or lot No.	Section	Township	Range	Lot Idn	Feet from the	North/South line	Feet from the	East/West line	County
Dedicated Acres 40	Joint or Infill	Consolidation Code	Order No.						

NO ALLOWABLE WILL BE ASSIGNED TO THIS COMPLETION UNTIL ALL INTERESTS HAVE BEEN CONSOLIDATED
OR A NON-STANDARD UNIT HAS BEEN APPROVED BY THE DIVISION

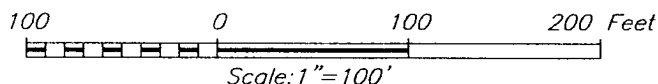
<p>GEODETIC COORDINATES NAD 27 NME Y=623696.5 N X=885882.5 E LAT.=32.708363° N LONG.=103.078831° W</p>	<p>990'</p> <p>990'</p>	<h3>OPERATOR CERTIFICATION</h3> <p>I hereby certify that the information herein is true and complete to the best of my knowledge and belief, and that this organization either owns a working interest or unleased mineral interest in the land including the proposed bottom hole location or has a right to drill this well at this location pursuant to a contract with an owner of such mineral or working interest, or to a voluntary pooling agreement or a compulsory pooling order heretofore entered by the division.</p> <p><i>Colleen Robinson</i> 10.14.08 Signature Date COLLEEN ROBINSON Printed Name</p> <h3>SURVEYOR CERTIFICATION</h3> <p>I hereby certify that the well location shown on this plat was plotted from field notes of actual surveys made by me or under my supervision, and that the same is true and correct to the best of my belief.</p> <p>RONALD J. EIDSON DECEMBER 11, 2007 Date Surveyed Signature & Seal of Professional Surveyor Certificate No. GARY EIDSON 12641 RONALD J. EIDSON 3239</p>
--	-------------------------	---

SECTION 31, TOWNSHIP 18 SOUTH, RANGE 39 EAST, N.M.P.M.,
 LEA COUNTY, NEW MEXICO



DIRECTIONS TO LOCATION

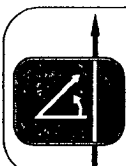
FROM THE INTERSECTION OF U.S. HWY. 62-180 AND SANGER ST. IN HOBBS, GO EAST ON SANGER ST. APPROX. 1.7 MILES. TURN RIGHT AND GO SOUTH APPROX. 0.1 MILE, TURN LEFT AND GO EAST 0.2 MILES. THIS LOCATION IS APPROX. 300 FEET SOUTH.



ARENA RESOURCES, INC.

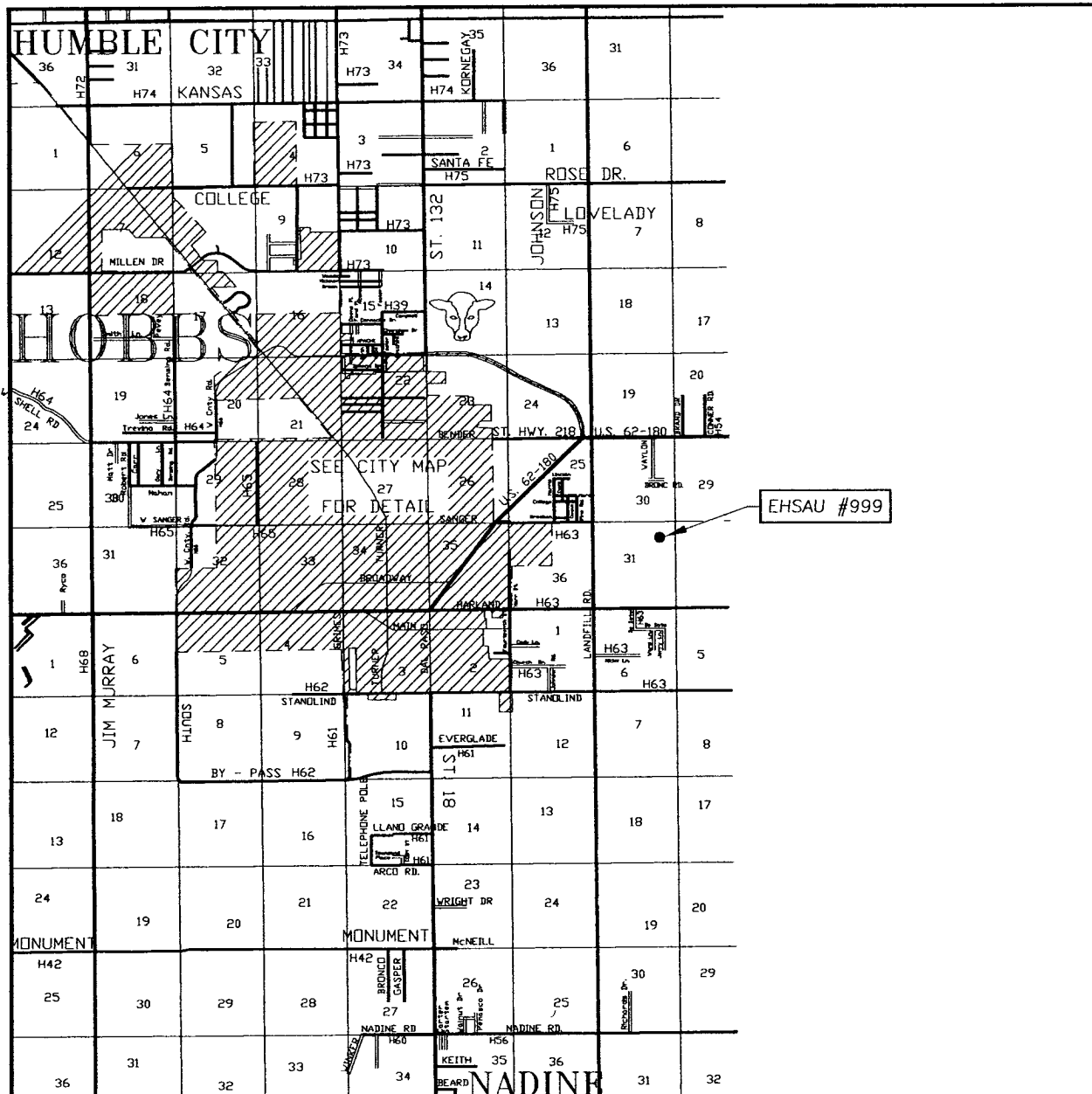
EHS AU #999
 LOCATED 990 FEET FROM THE NORTH LINE
 AND 990 FEET FROM THE EAST LINE OF SECTION 31,
 TOWNSHIP 18 SOUTH, RANGE 39 EAST, N.M.P.M.,
 LEA COUNTY, NEW MEXICO.

Survey Date: 12/17/07	Sheet 1 of 1 Sheets
W.O. Number. 08.13.1799	Dr By: LA
Date: 10/14/08	REL:07111784
08131799	Scale:1"=100'



PROVIDING SURVEYING SERVICES
 SINCE 1946
JOHN WEST SURVEYING COMPANY
 412 N. DAL PASO
 HOBBS, N.M. 88240
 (505) 393-3117

VICINITY MAP



SCALE: 1" = 2 MILES

SEC. 31 TWP. 18-S RGE. 39-E

SURVEY N.M.P.M.

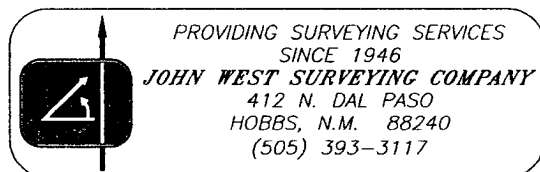
COUNTY LEA STATE NEW MEXICO

DESCRIPTION 990' FNL & 990' FEL

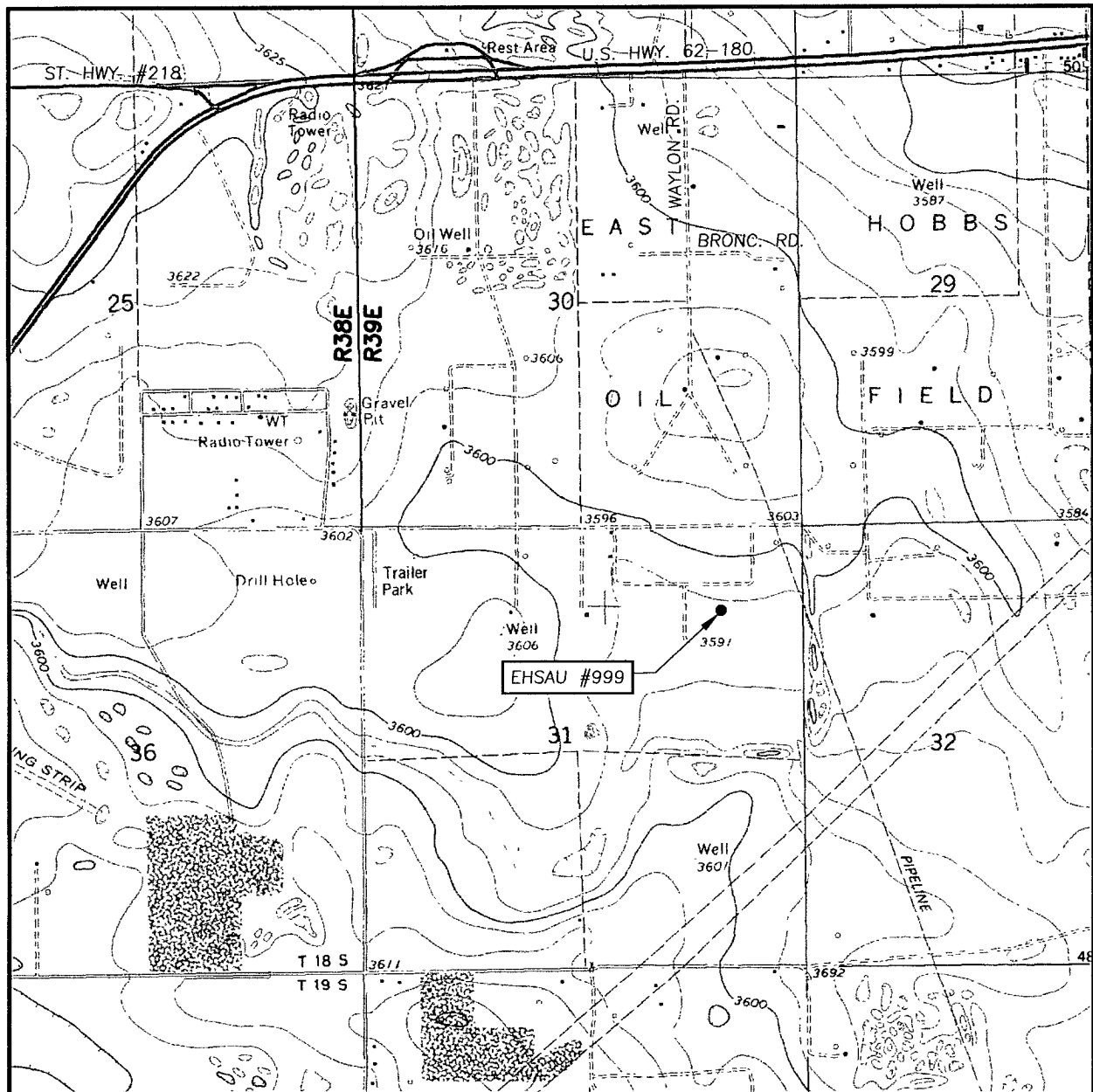
ELEVATION 3592'

OPERATOR ARENA RESOURCES, INC.

LEASE EHS AU



LOCATION VERIFICATION MAP



SCALE: 1" = 2000'

CONTOUR INTERVAL:
HOBBS EAST, N.M. - 5'

SEC. 31 TWP. 18-S RGE. 39-E

SURVEY _____ N.M.P.M.

COUNTY LEA STATE NEW MEXICO

DESCRIPTION 990' FNL & 990' FEL

ELEVATION 3592'

OPERATOR ARENA RESOURCES, INC.

LEASE EHS AU

U.S.G.S. TOPOGRAPHIC MAP
HOBBS EAST, N.M.

