

RECEIVED

DISTRICT I

1625 N. FRENCH DR., HOBBBS, NM 88240

OCT 02 2008

State of New Mexico

Energy, Minerals and Natural Resources Department

DISTRICT II

1301 W. GRAND AVENUE

HOBBBS (N)

CONSERVATION DIVISION

1220 SOUTH ST. FRANCIS DR.
Santa Fe, New Mexico 87505

DISTRICT III

1000 Rio Brazos Rd., Aztec, NM 87410

Form C-102

Revised October 12, 2005

Submit to Appropriate District Office

State Lease - 4 Copies

Fee Lease - 3 Copies

DISTRICT IV

1220 S. ST. FRANCIS DR., SANTA FE, NM 87505

WELL LOCATION AND ACREAGE DEDICATION PLAT

☐ AMENDED REPORT

API Number 30-015-38904 ✓	Pool Code 97608 ✓	Pool Name MALAJAMAR; YESO ✓
Property Code 302456 ✓	Property Name BC FEDERAL ✓	Well Number 20 ✓
OGRID No. 229137 ✓	Operator Name COG OPERATING, LLC ✓	Elevation 3960'

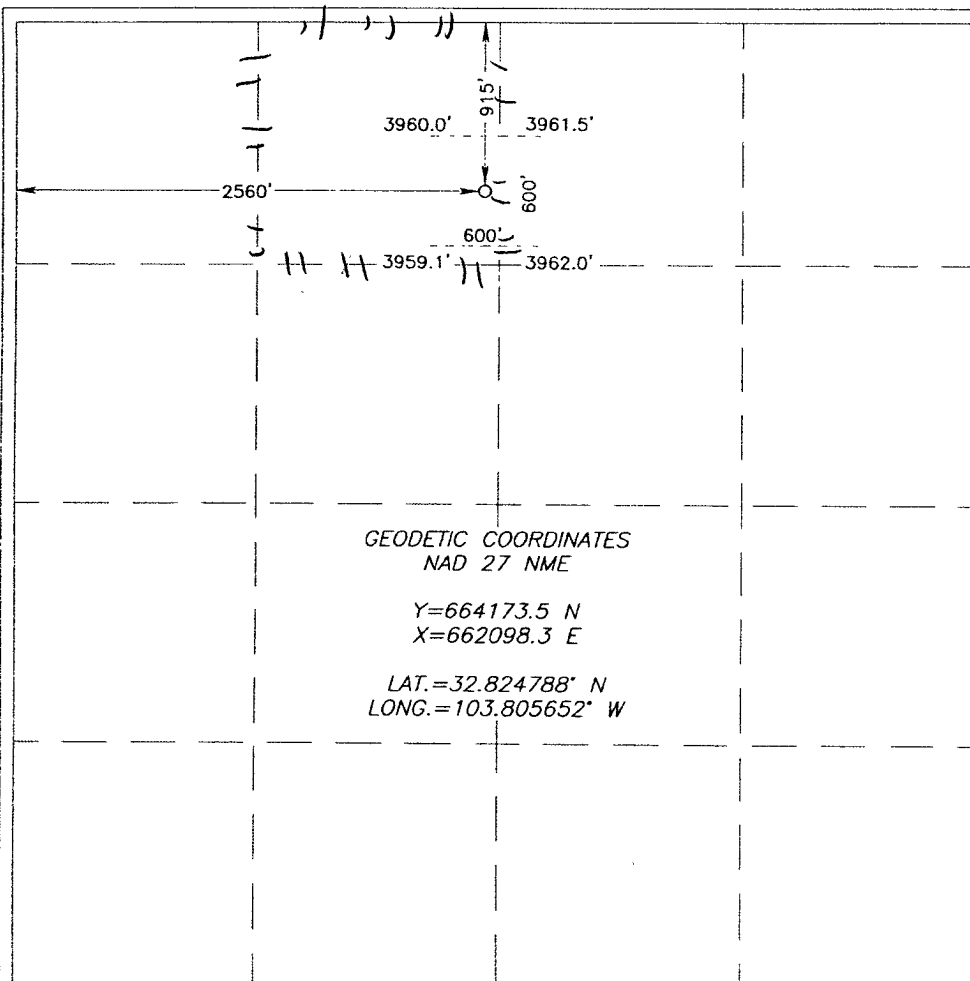
Surface Location

UL or lot No.	Section	Township	Range	Lot Idn	Feet from the	North/South line	Feet from the	East/West line	County
C	19	17-S	32-E		915	NORTH	2560	WEST	LEA ✓

Bottom Hole Location If Different From Surface

UL or lot No.	Section	Township	Range	Lot Idn	Feet from the	North/South line	Feet from the	East/West line	County
Dedicated Acres 40	Joint or Infill	Consolidation Code	Order No.						

NO ALLOWABLE WILL BE ASSIGNED TO THIS COMPLETION UNTIL ALL INTERESTS HAVE BEEN CONSOLIDATED
OR A NON-STANDARD UNIT HAS BEEN APPROVED BY THE DIVISION



OPERATOR CERTIFICATION

I hereby certify that the information herein is true and complete to the best of my knowledge and belief, and that this organization either owns a working interest or unleased mineral interest in the land including the proposed bottom hole location or has a right to drill this well at this location pursuant to a contract with an owner of such mineral or working interest, or to a voluntary pooling agreement or a compulsory pooling order heretofore entered by the division.

K. Carrillo 9/26/2008
Signature Date
Kancia Carrillo
Printed Name

SURVEYOR CERTIFICATION

I hereby certify that the well location shown on this plat was plotted from field notes of actual surveys made by me or under my supervision, and that the same is true and correct to the best of my belief.

RONALD J. EIDSON
JANUARY 30 2008
Date Surveyed
Signature & Seal of Professional Surveyor
Certificate No. GARY G. EIDSON 12841
RONALD J. EIDSON 3239