

State of New Mexico

DISTRICT I
1625 N. FRENCH DR. HOBBBS, NM 88249

Energy, Minerals and Natural Resources Department

Form C-102

DISTRICT II
1301 W. GRAND AVENUE, ARTESIA, NM 88210

OIL CONSERVATION DIVISION

Revised October 12, 2005
Submit to Appropriate District Office
State Lease - 4 Copies
Fee Lease - 3 CopiesDISTRICT III
1000 Rio Brazos Rd. Aztec, NM 874101220 SOUTH ST. FRANCIS DR.
Santa Fe, New Mexico 87505DISTRICT IV
1220 S. ST. FRANCIS DR. SANTA FE, NM 87505

WELL LOCATION AND ACREAGE DEDICATION PLAT

☐ AMENDED REPORT

API Number 30-025-39227	Pool Code 22900	Pool Name Eunice; Bli-Tu-Dr, North
Property Code 22503	Property Name NEDU	Well Number 248
GRID No. 873	Operator Name APACHE CORPORATION	Elevation 3495'

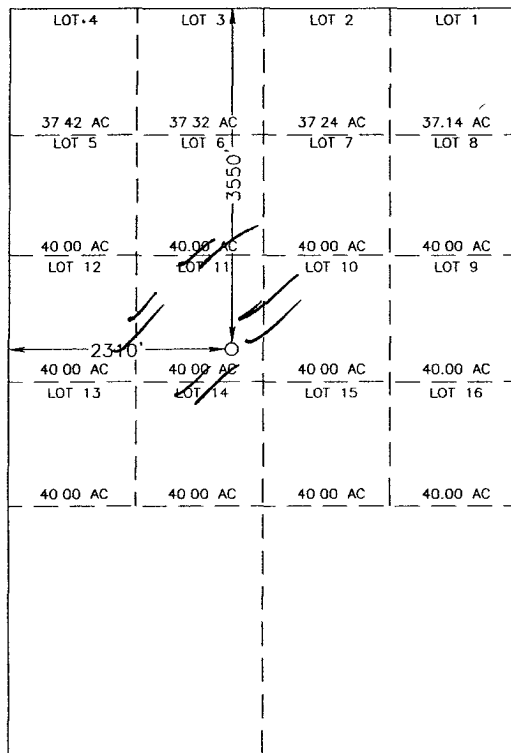
Surface Location

UL or lot No.	Section	Township	Range	Lot Idn	Feet from the	North/South line	Feet from the	East/West line	County
11	2	21-S	37-E		3550	NORTH	2310	WEST	LEA

Bottom Hole Location If Different From Surface

UL or lot No.	Section	Township	Range	Lot Idn	Feet from the	North/South line	Feet from the	East/West line	County
Dedicated Acres	Joint or Infill	Consolidation Code	Order No.						

NO ALLOWABLE WILL BE ASSIGNED TO THIS COMPLETION UNTIL ALL INTERESTS HAVE BEEN CONSOLIDATED
OR A NON-STANDARD UNIT HAS BEEN APPROVED BY THE DIVISION



GEODETIC COORDINATES
NAD 27 NME

Y=552192.7 N
X=869586.6 E

LAT.=32.512373° N
LONG.=103.134420° W

LAT.=32°30'44.54" N
LONG.=103°08'03.91" W

OPERATOR CERTIFICATION

I hereby certify that the information herein is true and complete to the best of my knowledge and belief, and that this organization either owns a working interest or unleased mineral interest in the land including the proposed bottom hole location or has a right to drill this well at this location pursuant to a contract with an owner of such mineral or working interest, or to a voluntary pooling agreement or a compulsory pooling order heretofore entered by the division.

Signature *[Signature]* Date **10/27/08**

Printed Name **SAM HAMPTON**

SURVEYOR CERTIFICATION

I hereby certify that the well location shown on this plat was plotted from field notes of actual surveys made by me or under my supervision, and that the same is true and correct to the best of my belief.

Date Surveyed **10/23/08** AR
Signature *[Signature]* Seal of Professional Surveyor **3239**
RONALD J. EIDSON
PROFESSIONAL SURVEYOR
10/05/07

Certificate No. **GARY EIDSON 12641**
RONALD J. EIDSON 3239

DISTRICT II
1301 W. GRAND AVENUE, ARTESIA, NM 88210

OIL CONSERVATION DIVISION
1220 SOUTH ST. FRANCIS DR.
Santa Fe, New Mexico 87505

Revised October 12, 2005
Submit to Appropriate District Office
State Lease - 4 Copies
Fee Lease - 3 Copies

DISTRICT III
1000 Rio Brazos Rd., Aztec, NM 87410

DISTRICT IV
1220 S. ST. FRANCIS DR., SANTA FE, NM 87505

WELL LOCATION AND ACREAGE DEDICATION PLAT

☐ AMENDED REPORT

API Number		Pool Code 22900	Pool Name Eunice; Bli-Tu-Dr, North
Property Code 22503	Property Name NEDU		Well Number 248
OGRID No. 873	Operator Name APACHE CORPORATION		Elevation 3495'

Surface Location

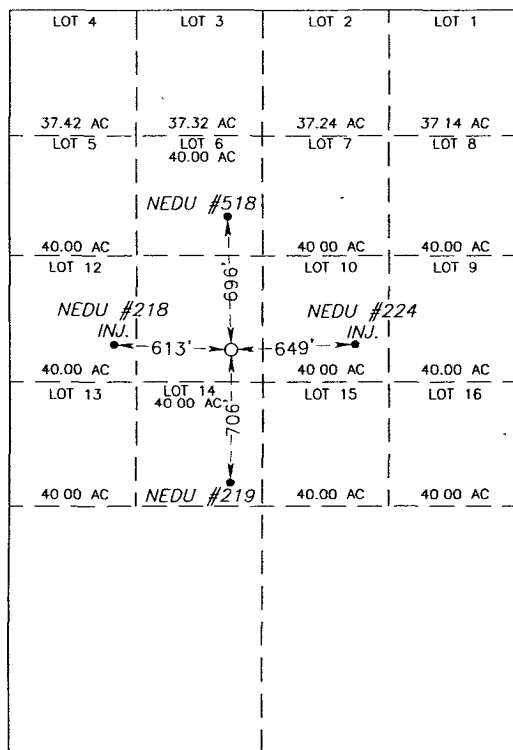
UL or lot No.	Section	Township	Range	Lot ldn	Feet from the	North/South line	Feet from the	East/West line	County
11	2	21-S	37-E		3550	NORTH	2310	WEST	LEA

Bottom Hole Location If Different From Surface

UL or lot No.	Section	Township	Range	Lot Idn	Feet from the	North/South line	Feet from the	East/West line	County
---------------	---------	----------	-------	---------	---------------	------------------	---------------	----------------	--------

Dedicated Acres	Joint or Infill	Consolidation Code	Order No.

NO ALLOWABLE WILL BE ASSIGNED TO THIS COMPLETION UNTIL ALL INTERESTS HAVE BEEN CONSOLIDATED
OR A NON-STANDARD UNIT HAS BEEN APPROVED BY THE DIVISION



GEODETIC COORDINATES
NAD 27 NME

$$Y=552192.7 \text{ N}$$
$$X=869586.6 \text{ E}$$

LAT.=32.512373° N
LONG.=103.134420° W

LAT.=32°30'44.54" N
LONG.=103°08'03.91" W

OPERATOR CERTIFICATION

I hereby certify that the information herein is true and complete to the best of my knowledge and belief, and that this organization either owns a working interest or unleased mineral interest in the land including the proposed bottom hole location or has a right to drill this well at this location pursuant to a contract with an owner of such mineral or working interest, or to a voluntary pooling agreement or a compulsory pooling order heretofore entered by the division.

Signature 10/27/08
Date

SAM HAMPTON
Printed Name

SURVEYOR CERTIFICATION

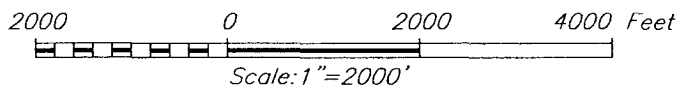
I hereby certify that the well location shown on this plat was plotted from field notes of actual surveys made by me or under my supervision, and that the same is true and correct to the best of my belief.

AUGUST 23, 2007

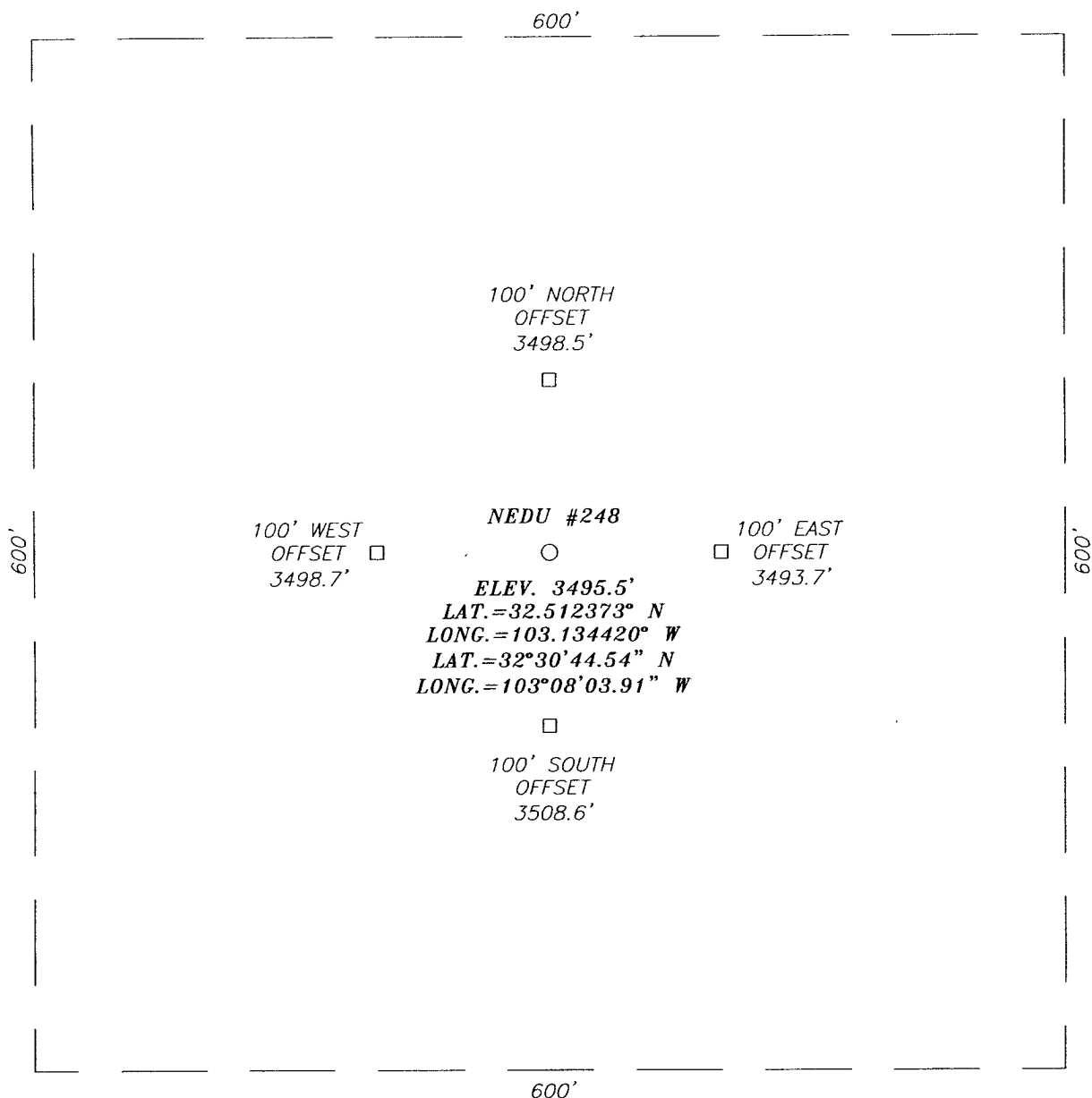
Date Surveyed _____ AR _____
Signature & Seal of _____
Professional Surveyor _____

07.11.1137

Certificate No. GARY EIDSON 12641
RONALD J. EIDSON 3239

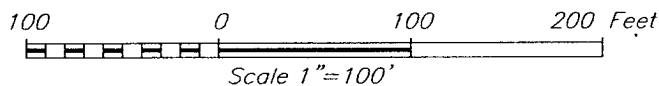


SECTION 2, TOWNSHIP 21 SOUTH, RANGE 37 EAST, N.M.P.M.,
 LEA COUNTY, NEW MEXICO



DIRECTIONS TO LOCATION


FROM THE INTERSECTION OF ST. HWY. #18 AND ST. HWY. #207, GO SOUTH-WEST ON ST. HWY. #207 APPROX. 0.8 MILES. TURN LEFT AND GO EAST APPROX. 0.15 MILES. THIS LOCATION IS APPROX. 358 FEET SOUTH.



APACHE CORPORATION

NEDU #248 WELL
 LOCATED 3550 FEET FROM THE NORTH LINE
 AND 2310 FEET FROM THE WEST LINE OF SECTION 2,
 TOWNSHIP 21 SOUTH, RANGE 37 EAST, N.M.P.M.,
 LEA COUNTY, NEW MEXICO.

Survey Date: 8/23/07	Sheet 1 of 1 Sheets
W.O. Number: 07.11.1137	Dr By: AR
Date: 8/31/07	Disk: 07111137
	Scale: 1"=100'



**PROVIDING SURVEYING SERVICES
 SINCE 1946**
JOHN WEST SURVEYING COMPANY
 412 N. DAL PASO
 HOBBS, N.M. 88240
 (505) 393-3117

VICINITY MAP



SCALE: 1" = 2 MILES

SEC. 2 TWP. 21-S RGE. 37-E

SURVEY N.M.P.M.

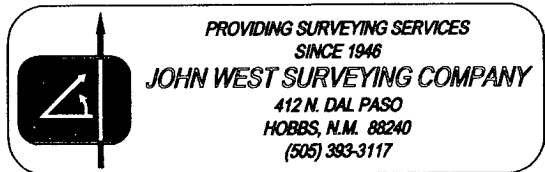
COUNTY LEA STATE NEW MEXICO

DESCRIPTION 3550' FNL & 2310' FWL

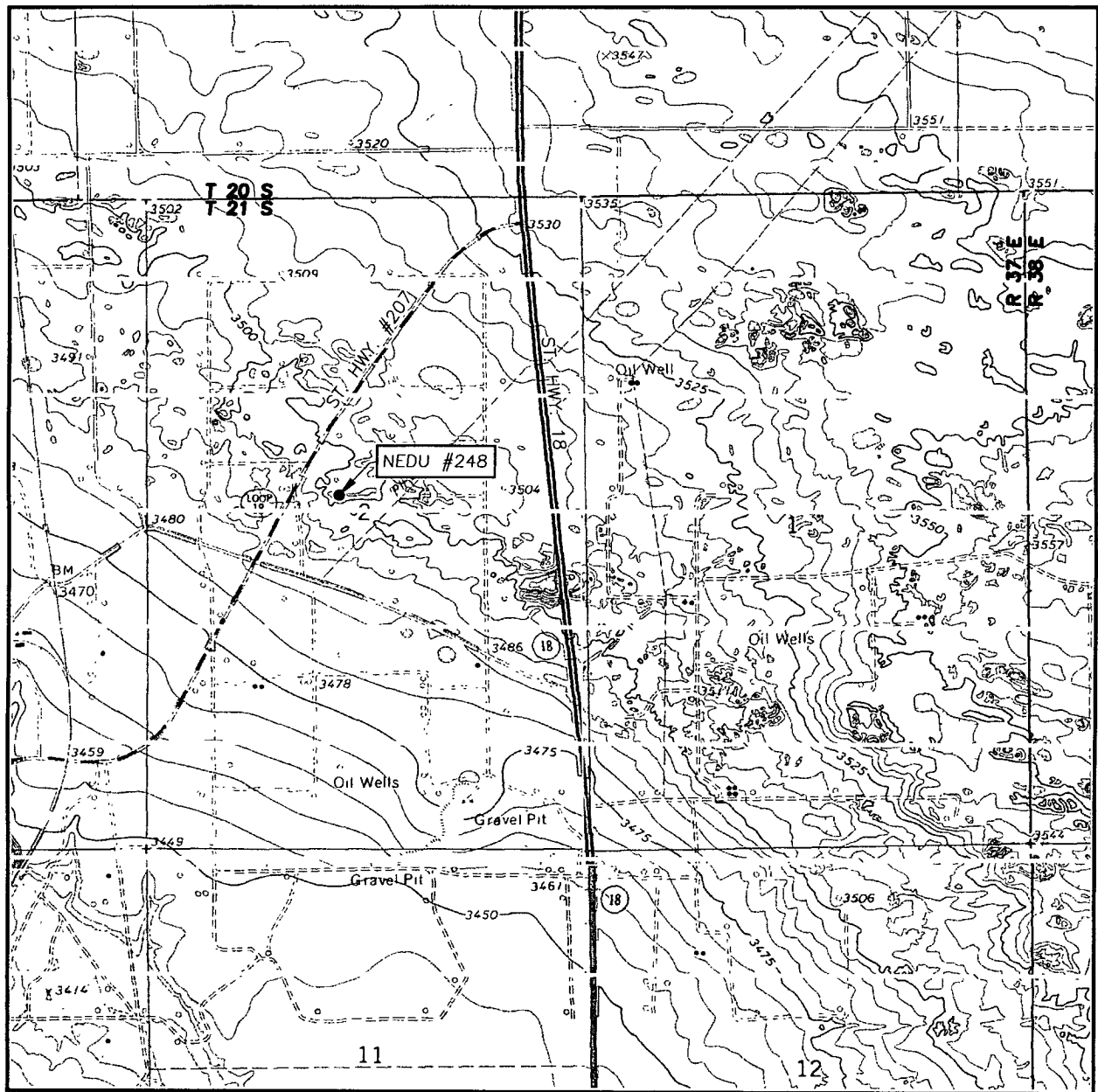
ELEVATION 3495'

OPERATOR APACHE CORPORATION

LEASE _____ NEDU _____



LOCATION VERIFICATION MAP



SCALE: 1" = 2000'

CONTOUR INTERVAL:
HOBBS SW, N.M. - 10'

SEC. 2 TWP. 21-S RGE. 37-E

SURVEY _____ N.M.P.M.

COUNTY LEA STATE NEW MEXICO

DESCRIPTION 3550' FNL & 2310' FWL

ELEVATION 3495'

OPERATOR APACHE CORPORATION

LEASE NEDU

U.S.G.S. TOPOGRAPHIC MAP
HOBBS SW, N.M.

