

District I
1625 N French Dr, Hobbs, NM 88240
District II
1301 W Grand Avenue, Artesia, NM 88210
District III
1000 Rio Brazos Road, Aztec, NM 87410
District IV
1220 S St Francis Dr, Santa Fe, NM 87505

State of New Mexico
Energy Minerals and Natural Resources

Form C-101
June 16, 2008

Oil Conservation Division
1220 South St. Francis Dr.
Santa Fe, NM 87505

Submit to appropriate District Office

☐ AMENDED REPORT

APPLICATION FOR PERMIT TO DRILL, RE-ENTER, DEEPEN, PLUGBACK, OR ADD A ZONE

¹ Operator Name and Address PETROHAWK OPERATING COMPANY 1000 LOUISIANA STE 5600, HOUSTON, TX 7702		² OGRID Number 194849
³ Property Code 302433	⁴ Property Name STATE A A/C 2	⁵ API Number 30 - 025 - 39177
⁶ Proposed Pool 1 EUNICE;SEVEN RIVERS-QUEEN, SOUTH		⁷ Proposed Pool 2 97

7 Surface Location

UL or lot no O	Section 5	Township 22S	Range 36E	Lot Idn	Feet from the 1304	North/South line S	Feet from the 2627	East/West line E	County LEA
--------------------------	---------------------	------------------------	---------------------	---------	------------------------------	------------------------------	------------------------------	----------------------------	----------------------

8 Proposed Bottom Hole Location If Different From Surface

UL or lot no	Section	Township	Range	Lot Idn	Feet from the	North/South line	Feet from the	East/West line	County
--------------	---------	----------	-------	---------	---------------	------------------	---------------	----------------	--------

Additional Well Information

¹¹ Work Type Code N	¹² Well Type Code O	¹³ Cable/Rotary R	¹⁴ Lease Type Code S	¹⁵ Ground Level Elevation 3586
¹⁶ Multiple NO	¹⁷ Proposed Depth 4000	¹⁸ Formation QUEEN	¹⁹ Contractor	²⁰ Spud Date

21 Proposed Casing and Cement Program

Hole Size	Casing Size	Casing weight/foot	Setting Depth	Sacks of Cement	Estimated TOC
12.25	8.625	24	1450	650	0
7.875	5.5	15.5	4000	725	0

²² Describe the proposed program. If this application is to DEEPEN or PLUG BACK, give the data on the present productive zone and proposed new productive zone. Describe the blowout prevention program, if any. Use additional sheets if necessary.

RECEIVED
SEP 11 2008
HOBBS OCD

²³ I hereby certify that the information given above is true and complete to the best of my knowledge and belief.

Signature

Eddie W Seay

Printed name

Eddie Seay

Title

Agent

E-mail Address

seay04@leaco.net

Date

9/9/08

Phone

575-390-2454

OIL CONSERVATION DIVISION

Approved by

[Signature]

Title

Geologist

Approval Date

9/25/08

Expiration Date

9/25/10

CONDITIONS OF APPROVAL for Non-Standard Location:
Intent to drill ONLY — CANNOT produce until the Non-Standard
Location has been approved by OCD Santa Fe office

**Permit Expires 2 Years From Approval
Date Unless Drilling Underway**

DISTRICT I

1304 N. FRENCH DR., HOBBS, NM 88240

DISTRICT II

1301 W. GRAND AVENUE, ARTESIA, NM 88210

DISTRICT III

1000 Rio Brazos Rd., Aztec, NM 87410

DISTRICT IV

1220 S. ST. FRANCIS DR., SANTA FE, NM 87505

State of New Mexico

Energy, Minerals and Natural Resources Department

OIL CONSERVATION DIVISION

1220 SOUTH ST. FRANCIS DR.
Santa Fe, New Mexico 87505

Form C-102

Revised October 12, 2005

Submit to Appropriate District Office

State LEase - 4 Copies

Fee LEase - 3 Copies

WELL LOCATION AND ACREAGE DEDICATION PLAT

☐ AMENDED REPORT

API Number 30-025-39177	Pool Code 24130	Pool Name EUNICE-SEVEN RIVERS-QUEEN, SOUTH
Property Code 302433	Property Name STATE A A/C 2	Well Number 97
GRID No. 194849	Operator Name PETROHAWK OPERATING	Elevation 3586'

Surface Location

UL or lot No.	Section	Township	Range	Lot Idn	Feet from the	North/South line	Feet from the	East/West line	County
0	5	22-S	36-E		1304	SOUTH	2627	EAST	LEA

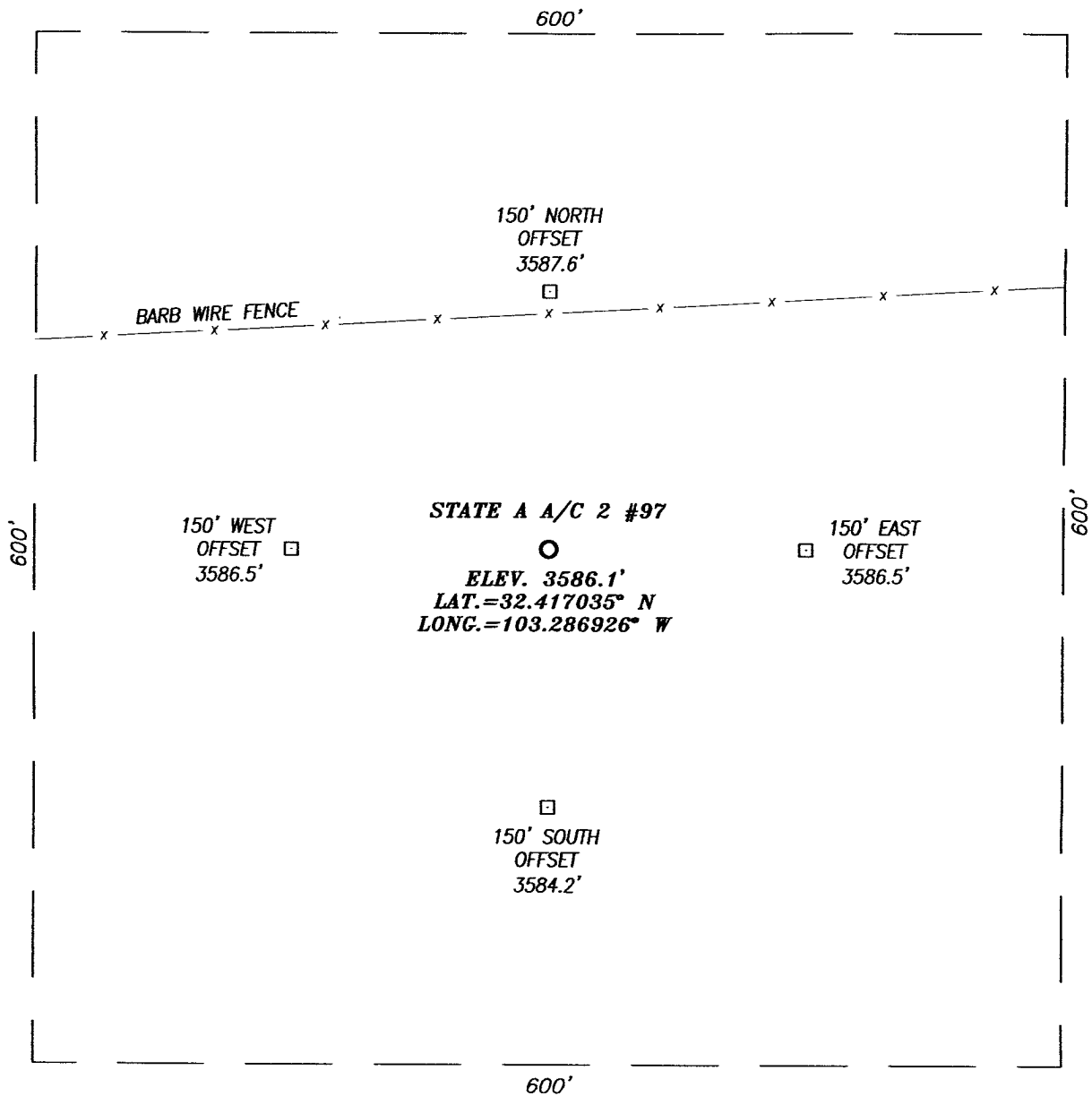
Bottom Hole Location If Different From Surface

UL or lot No.	Section	Township	Range	Lot Idn	Feet from the	North/South line	Feet from the	East/West line	County
Dedicated Acres 40		Joint or Infill		Consolidation Code		Order No.			

NO ALLOWABLE WILL BE ASSIGNED TO THIS COMPLETION UNTIL ALL INTERESTS HAVE BEEN CONSOLIDATED
OR A NON-STANDARD UNIT HAS BEEN APPROVED BY THE DIVISION

LOT 4	LOT 3	LOT 2	LOT 1
<p>GEODETIC COORDINATES NAD 27 NME. SURFACE LOCATION</p> <p>Y=517012.5 N X=822911.7 E</p> <p>LAT.=32.417035° N LONG.=103.286926° W</p>			
<p>OPERATOR CERTIFICATION</p> <p>I hereby certify that the information herein is true and complete to the best of my knowledge and belief, and that this organization either owns a working interest or unleased mineral interest in the land including the proposed bottom hole location or has a right to drill this well at this location pursuant to a contract with an owner of such mineral or working interest, or to a voluntary pooling agreement or a compulsory pooling order heretofore entered by the division.</p> <p><i>Eddie W Seay</i> 9/9/08 Signature Date</p> <p><i>Eddie W Seay</i> Printed Name</p>			
<p>SURVEYOR CERTIFICATION</p> <p>I hereby certify that the well location shown on this plat was plotted from field notes of actual surveys made by me or under my supervision, and that the same is true and correct to the best of my belief.</p> <p><i>Ronald J. Eidson</i> 9/10/08 Date Surveyed Seal of Professional Surveyor 3239</p> <p><i>Ronald J. Eidson</i> 08-11-1040 Certificate No. GARY G. EIDSON 12841 RONALD J. EIDSON 3239</p>			

SECTION 5, TOWNSHIP 22 SOUTH, RANGE 36 EAST, N.M.P.M.,
 LEA COUNTY, NEW MEXICO

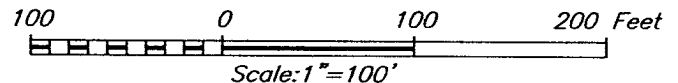


DIRECTIONS TO LOCATION

FROM THE INTERSECTION OF COUNTY ROAD #E21
 (DELAWARE BASIN ROAD) AND COUNTY ROAD #E21
 (WEAVER ROAD), GO EAST ON DELAWARE BASIN ROAD
 APPROX. 0.8 MILES. TURN LEFT AND GO NORTH APPROX.
 1.1 MILES. BEND LEFT AND GO WEST APPROX. 0.4 MILE.
 THIS LOCATION IS NORTH APPROX. 467 FEET.



PROVIDING SURVEYING SERVICES
 SINCE 1946
JOHN WEST SURVEYING COMPANY
 412 N. DAL PASO
 HOBBS, N.M. 88240
 (505) 393-3117

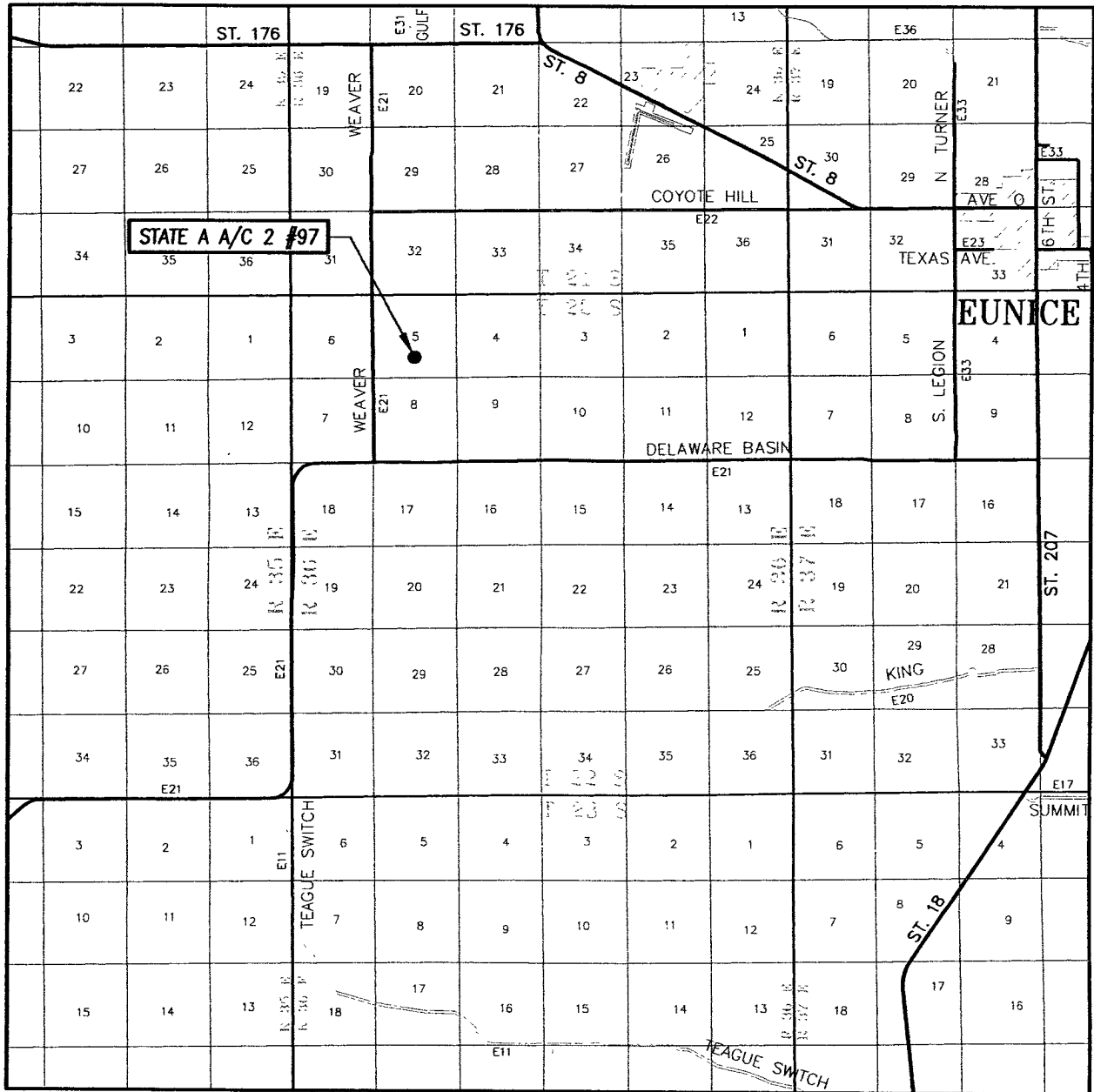


PETROHAWK OPERATING

STATE A A/C 2 #97 WELL
 LOCATED 1304 FEET FROM THE SOUTH LINE
 AND 2627 FEET FROM THE EAST LINE OF SECTION 5,
 TOWNSHIP 22 SOUTH, RANGE 36 WEST, N.M.P.M.,
 LEA COUNTY, NEW MEXICO.

Survey Date: 6/30/08	Sheet 1 of 1 Sheets
W.O. Number: 08.11.1040	Dr By: DSS
Date: 7/7/08	08111040
	Scale: 1"=100'

VICINITY MAP



SCALE: 1" = 2 MILES

SEC. 5 TWP. 22-S RGE. 36-E

SURVEY N.M.P.M.

COUNTY LEA STATE NEW MEXICO

DESCRIPTION 1304' FSL & 2627' FEL

ELEVATION 3586'

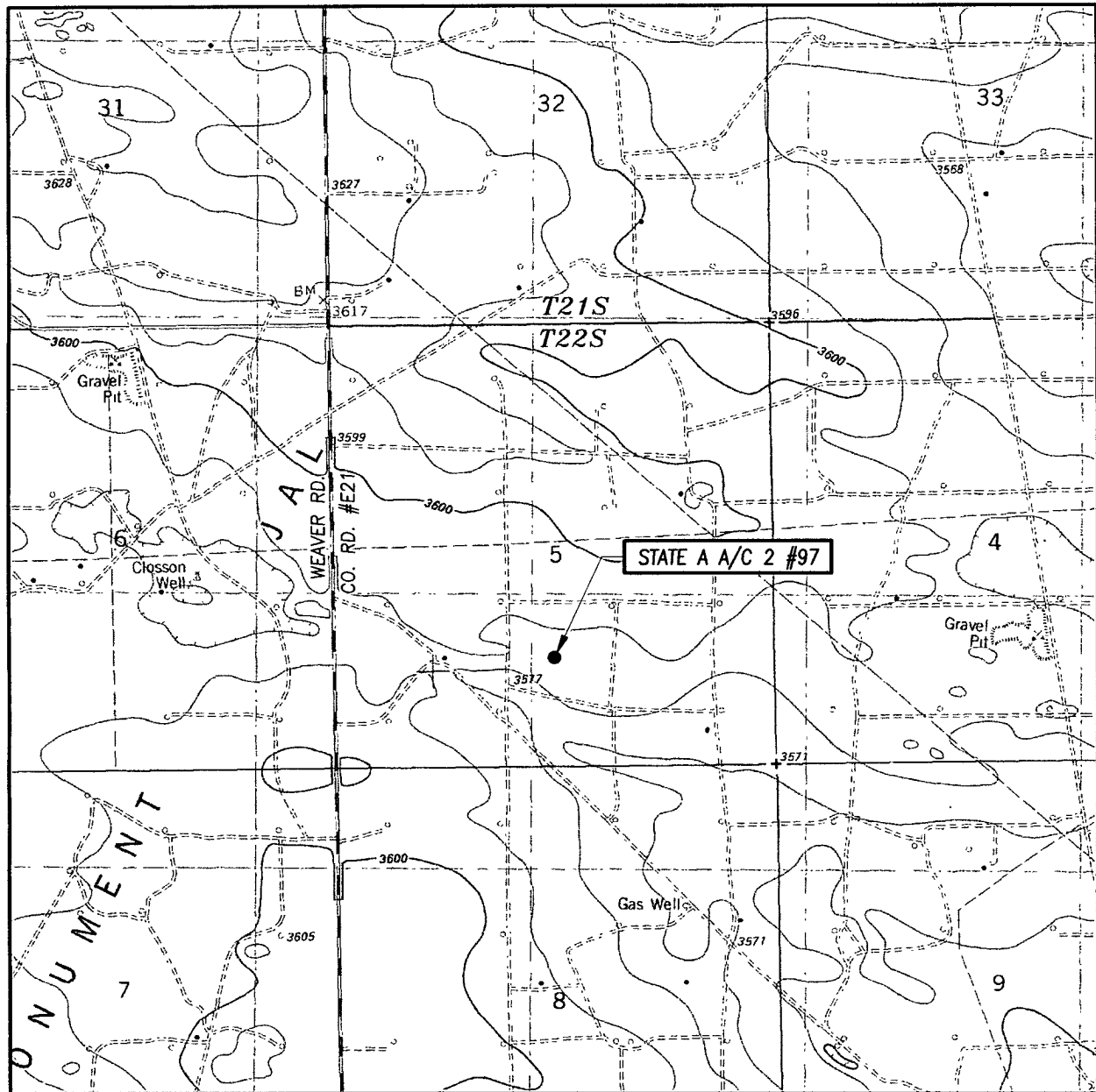
OPERATOR PETROHAWK OPERATING

LEASE STATE A A/C 2



PROVIDING SURVEYING SERVICES
SINCE 1946
JOHN WEST SURVEYING COMPANY
412 N. DAL PASO
HOBBS, N.M. 88240
(505) 393-3117

LOCATION VERIFICATION MAP



SCALE: 1" = 2000'

CONTOUR INTERVAL: 10'
OIL CENTER, NM

SEC. 5 TWP. 22-S RGE. 36-E

SURVEY N.M.P.M.

COUNTY LEA STATE NEW MEXICO

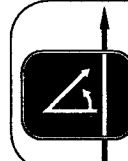
DESCRIPTION 1304' FSL & 2627' FEL

ELEVATION 3586'

OPERATOR PETROHAWK OPERATING

LEASE STATE A A/C 2

U.S.G.S. TOPOGRAPHIC MAP
OIL CENTER, NM



PROVIDING SURVEYING SERVICES
SINCE 1946
JOHN WEST SURVEYING COMPANY
412 N DAL PASO
HOBBS, N.M. 88240
(505) 393-3117