

DISTRICT II
1625 N. FRANK DR. HOBBBS, NM 87505

State of New Mexico
Energy, Minerals and Natural Resources Department

Form C-102

Revised October 12, 2005

Submit to Appropriate District Office

State Lease - 4 Copies

Fee Lease - 3 Copies

DISTRICT II
1301 W. GRAND AVENUE, ALBUQUERQUE, NM 87102

OIL CONSERVATION DIVISION
12310 SOUTH ST. FRANCIS DR.
Santa Fe, New Mexico 87505

DISTRICT III
1000 RICH FRAZEE RD. ALBUQUERQUE, NM 87102

DISTRICT IV
12310 S. ST. FRANCIS DR., SANTA FE, NM 87505

WELL LOCATION AND ACREAGE DEDICATION PLAT

☐ AMENDED REPORT

API Number 30-025-39222 ✓	Pool Code 32300 ✓	Pool Name Hobbs, San Andres, East
Property Code 300385 ✓	Property Name EAST HOBBS SA UNIT ✓	Well Number 210 ✓
OGRID No. 220420 ✓	Operator Name ARENA RESOURCES, INC. ✓	Elevation 3605' ✓

Surface Location

UL or lot No. H	Section 30	Township 18-S	Range 39-E	Lot Idn	Feet from the 2590	North/South line NORTH	Feet from the 460	East/West line EAST	County LEA
--------------------	---------------	------------------	---------------	---------	-----------------------	---------------------------	----------------------	------------------------	---------------

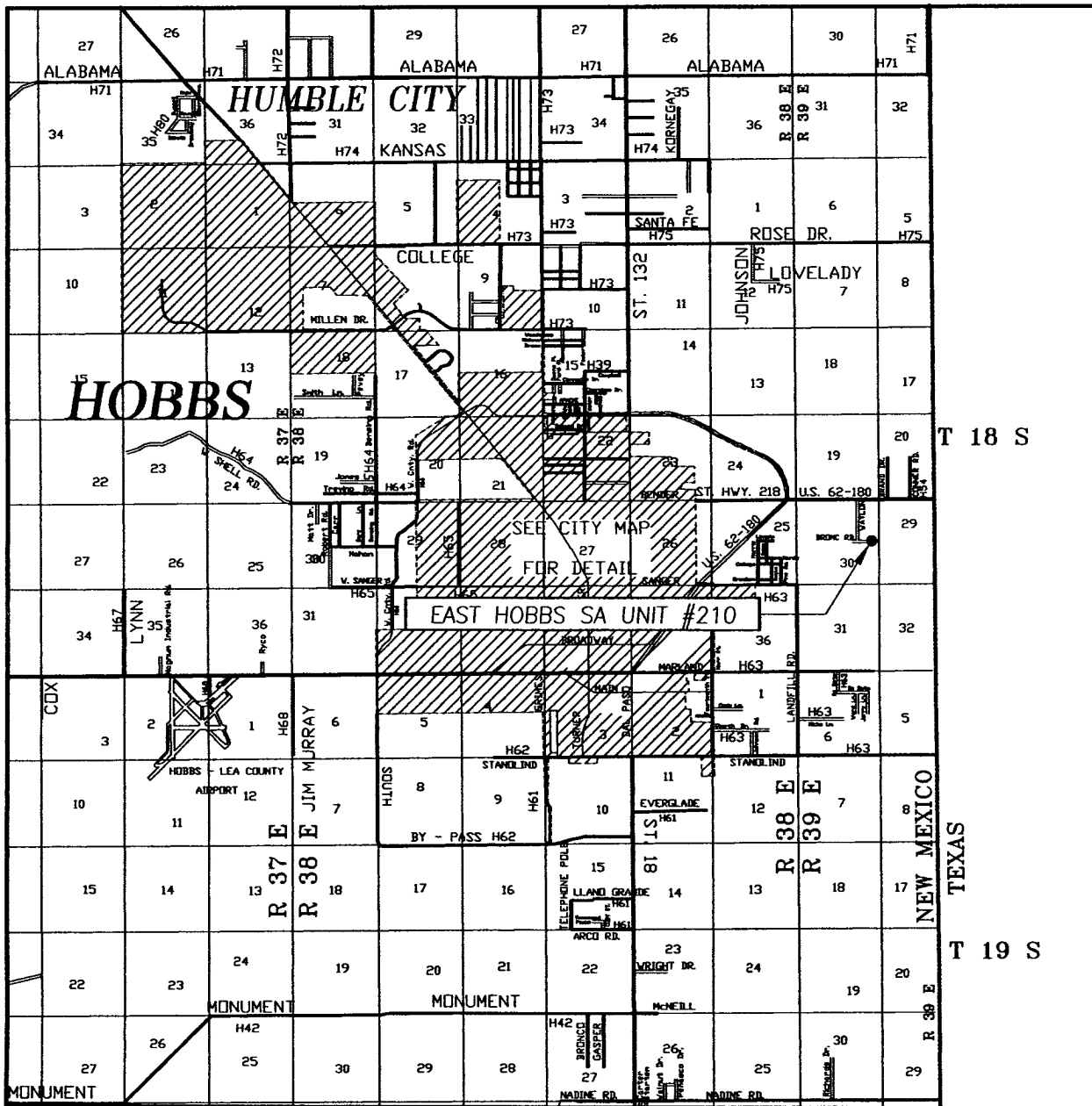
Bottom Hole Location If Different From Surface

UL or lot No.	Section	Township	Range	Lot Idn	Feet from the	North/South line	Feet from the	East/West line	County
Dedicated Acres 40.0	Joint or Infill	Consolidation Code	Order No.						

NO ALLOWABLE WILL BE ASSIGNED TO THIS COMPLETION UNTIL ALL INTERESTS HAVE BEEN CONSOLIDATED
OR A NON-STANDARD UNIT HAS BEEN APPROVED BY THE DIVISION

<div>Diagram showing well location and acreage dedication plat. The diagram includes a grid with a well location marked by a circle and a line indicating a distance of 2590' from the surface location. The diagram also shows a distance of 460' from the well location to the surface location. The diagram is labeled with 'GEODETTIC COORDINATES NAD 27 NME' and 'LAT.=32.718492' N LONG.=103.077099' W'.</div>					OPERATOR CERTIFICATION <i>I hereby certify that the information herein is true and complete to the best of my knowledge and belief, and that this organization either owns a working interest or unleased mineral interest in the land including the proposed bottom hole location or has a right to drill this well at this location pursuant to a contract with an owner of such mineral or working interest, or to a voluntary pooling agreement or a compulsory pooling order heretofore entered by the division.</i> Signature: <u>GARY G. EIDSON</u> Date: <u>11/25/08</u> Printed Name: <u>GARY G. EIDSON</u>				
					SURVEYOR CERTIFICATION <i>I hereby certify that the well location shown on this plat was plotted from field notes of actual surveys made by me or under my supervision, and that the same is true and correct to the best of my belief.</i>				
					NOVEMBER 13 2008 Date Surveyed Signature: <u>GARY G. EIDSON</u> Seal of Professional Surveyor 12641 Certificate No. <u>12641</u> GARY G. EIDSON RONALD J. EIDSON 3239				
					LA				

VICINITY MAP



SCALE: 1" = 2 MILES

SEC. 30 TWP. 18-S RGE. 39-E

SURVEY N.M.P.M.

COUNTY LEA STATE NEW MEXICO

DESCRIPTION 2590' FNL & 460' FEL

ELEVATION 3605'

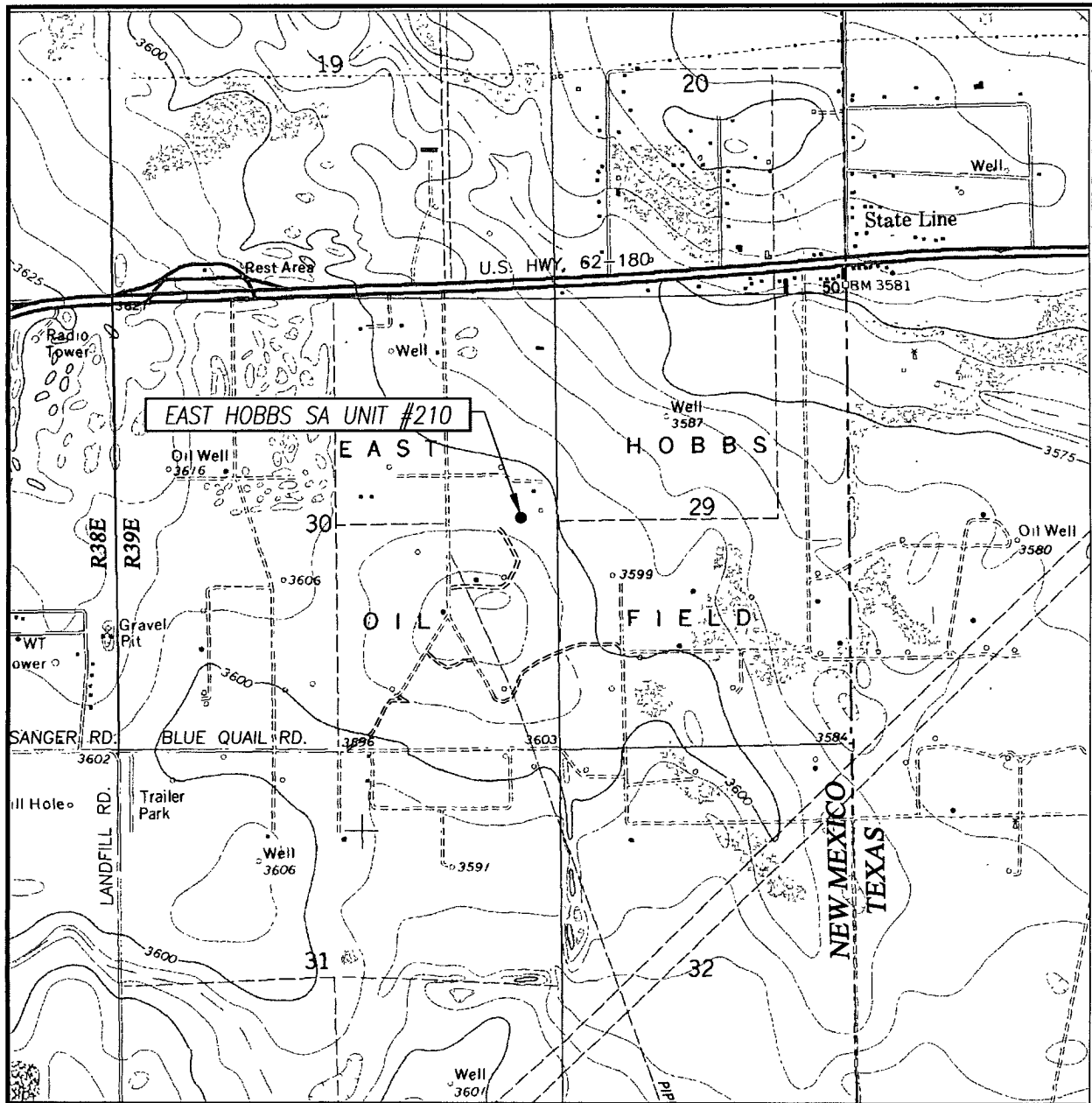
OPERATOR ARENA RESOURCES, INC.

LEASE EAST HOBBS SA UNIT



PROVIDING SURVEYING SERVICES
SINCE 1946
JOHN WEST SURVEYING COMPANY
412 N. DAL PASO
HOBBS, N.M. 88240
(575) 393-3117

LOCATION VERIFICATION MAP



SCALE: 1" = 2000'

CONTOUR INTERVAL:
HOBBS EAST, N.M. - 5'

SEC. 30 TWP. 18-S RGE. 39-E

SURVEY _____ N.M.P.M.

COUNTY LEA STATE NEW MEXICO


DESCRIPTION 2590' FNL & 460' FEL

ELEVATION 3605'

OPERATOR ARENA RESOURCES, INC.

LEASE EAST HOBBS SA UNIT

U.S.G.S. TOPOGRAPHIC MAP
HOBBS EAST, N.M.



PROVIDING SURVEYING SERVICES
SINCE 1946
JOHN WEST SURVEYING COMPANY
412 N. DAL PASO
HOBBS, N.M. 88240
(575) 393-3117