

RECEIVED

DEC 07 2008

DISTRICT I
1625 N. FRENCH DR., HOBBS, NM 88240

State of New Mexico
Energy, Minerals and Natural Resources Department

DISTRICT II
1301 W. GRAND AVENUE, ARTESIA, NM 88210

DISTRICT III
1000 Rio Brazos Rd., Aztec, NM 87410

DISTRICT IV
1220 S. ST. FRANCIS DR., SANTA FE, NM 87505

HOBBBS UNIT
CONSERVATION DIVISION
1220 SOUTH ST. FRANCIS DR.
Santa Fe, New Mexico 87505

Form C-102
Revised October 12, 2005
Submit to Appropriate District Office
State Lease - 4 Copies
Fee Lease - 3 Copies

WELL LOCATION AND ACREAGE DEDICATION PLAT

☐ AMENDED REPORT

| | | |
|----------------------------|--|---------------------------------------|
| API Number 30.025.39288 | Pool Code 22900 | Pool Name Eunice Bl. Tr. Dr. North |
| Property Code 22503 | Property Name NORTHEAST DRINKARD UNIT | Well Number 152 |
| OGRID No. 873 | Operator Name APACHE CORPORATION | Elevation 3476' |

Surface Location

| | | | | | | | | | |
|--------------------|--------------|------------------|---------------|--------------|-----------------------|---------------------------|----------------------|------------------------|---------------|
| UL or lot No. A | Section 4 | Township 21-S | Range 37-E | Lot Idn 8 | Feet from the 1900 | North/South line NORTH | Feet from the 140 | East/West line EAST | County LEA |
|--------------------|--------------|------------------|---------------|--------------|-----------------------|---------------------------|----------------------|------------------------|---------------|

Bottom Hole Location If Different From Surface

| | | | | | | | | | |
|---------------|---------|----------|-------|---------|-----------------|------------------|--------------------|----------------|--------|
| UL or lot No. | Section | Township | Range | Lot Idn | Feet from the | North/South line | Feet from the | East/West line | County |
| | | | | | Dedicated Acres | Joint or Infill | Consolidation Code | Order No. | |

NO ALLOWABLE WILL BE ASSIGNED TO THIS COMPLETION UNTIL ALL INTERESTS HAVE BEEN CONSOLIDATED
OR A NON-STANDARD UNIT HAS BEEN APPROVED BY THE DIVISION

| | | | |
|----|----|----|----|
| 4 | 3 | 2 | 1 |
| 5 | 6 | 7 | 8 |
| 12 | 11 | 10 | 9 |
| 13 | 14 | 15 | 16 |

GEODETIC COORDINATES
NAD 27 NME
Y=553757.6 N
X=861852.6 E
LAT.=32.516911° N
LONG.=103.159448° W
LAT.=32°31'00.88" N
LONG.=103°09'34.01" W

1900'
140'

OPERATOR CERTIFICATION

I hereby certify that the information herein is true and complete to the best of my knowledge and belief, and that this organization either owns a working interest or unleased mineral interest in the land including the proposed bottom hole location or has a right to drill this well at this location pursuant to a contract with an owner of such mineral or working interest, or to a voluntary pooling agreement or a compulsory pooling order heretofore entered by the division.

Signature [Signature] Date 11/25/08
Printed Name SAM HAMPTON

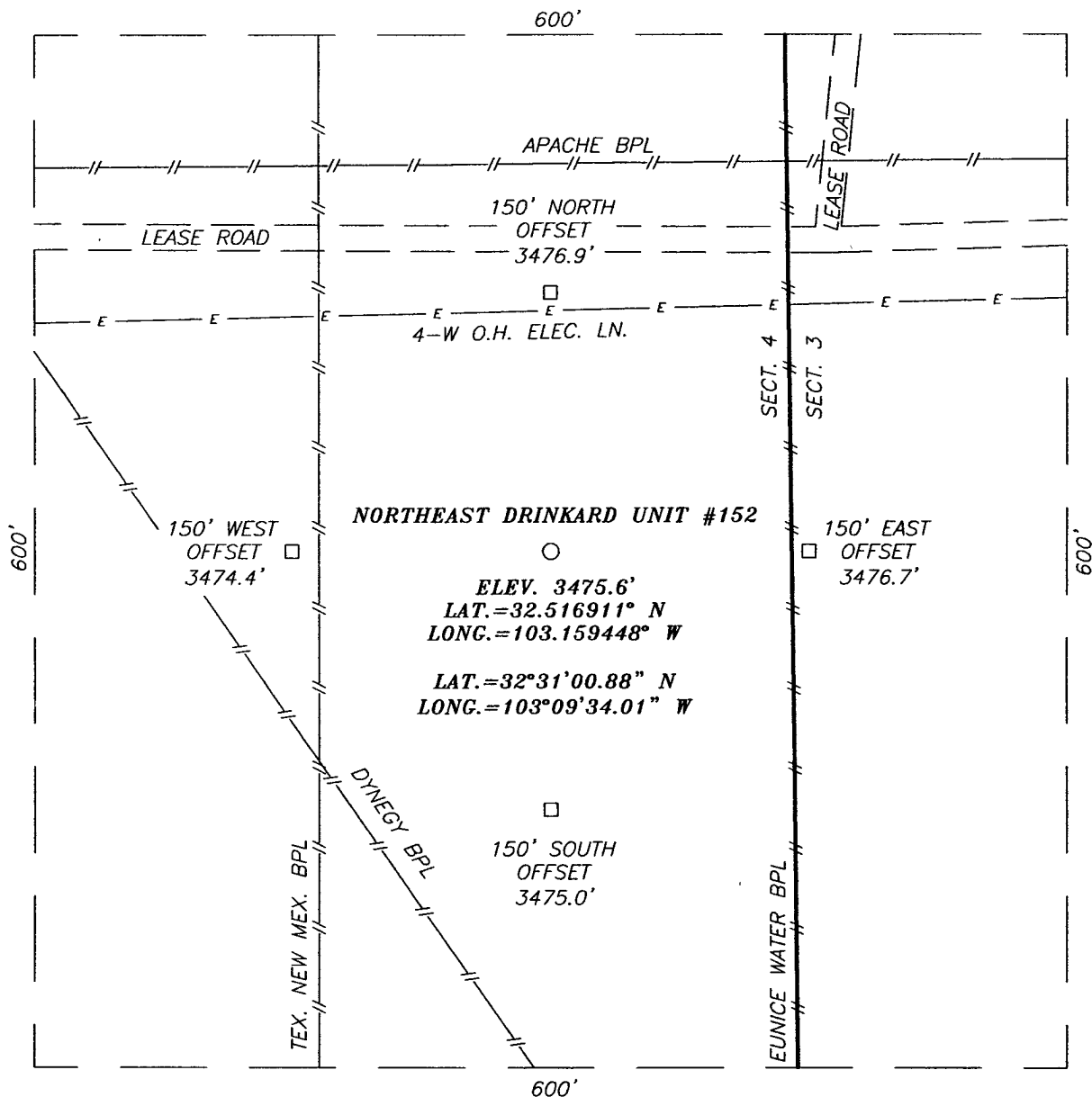
SURVEYOR CERTIFICATION

I hereby certify that the well location shown on this plat was plotted from field notes of actual surveys made by me or under my supervision, and that the same is true and correct to the best of my belief.

NOVEMBER 2008
Date Surveyed
Signature & Seal of Professional Surveyor
[Signature]
11/15/08

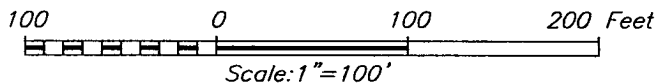
Certificate No. GARY EIDSON 12641
RONALD J. EIDSON 3239

SECTION 4, TOWNSHIP 21 SOUTH, RANGE 37 EAST, N.M.P.M.,
LEA COUNTY, NEW MEXICO



DIRECTIONS TO LOCATION

FROM THE INTERSECTION OF STATE HWY. #207 AND CO. RD. E-34 (DECK), GO NORTHEAST ON STATE HWY. #207 APPROX. 0.7 MILES; TURN LEFT AND GO NORTHWEST APPROX. 0.3 MILES; TURN RIGHT AND GO NORTH APPROX. 1.0 MILE; TURN LEFT AND GO WEST APPROX. 0.2 MILES. THIS LOCATION IS APPROX. 182 FEET SOUTH.



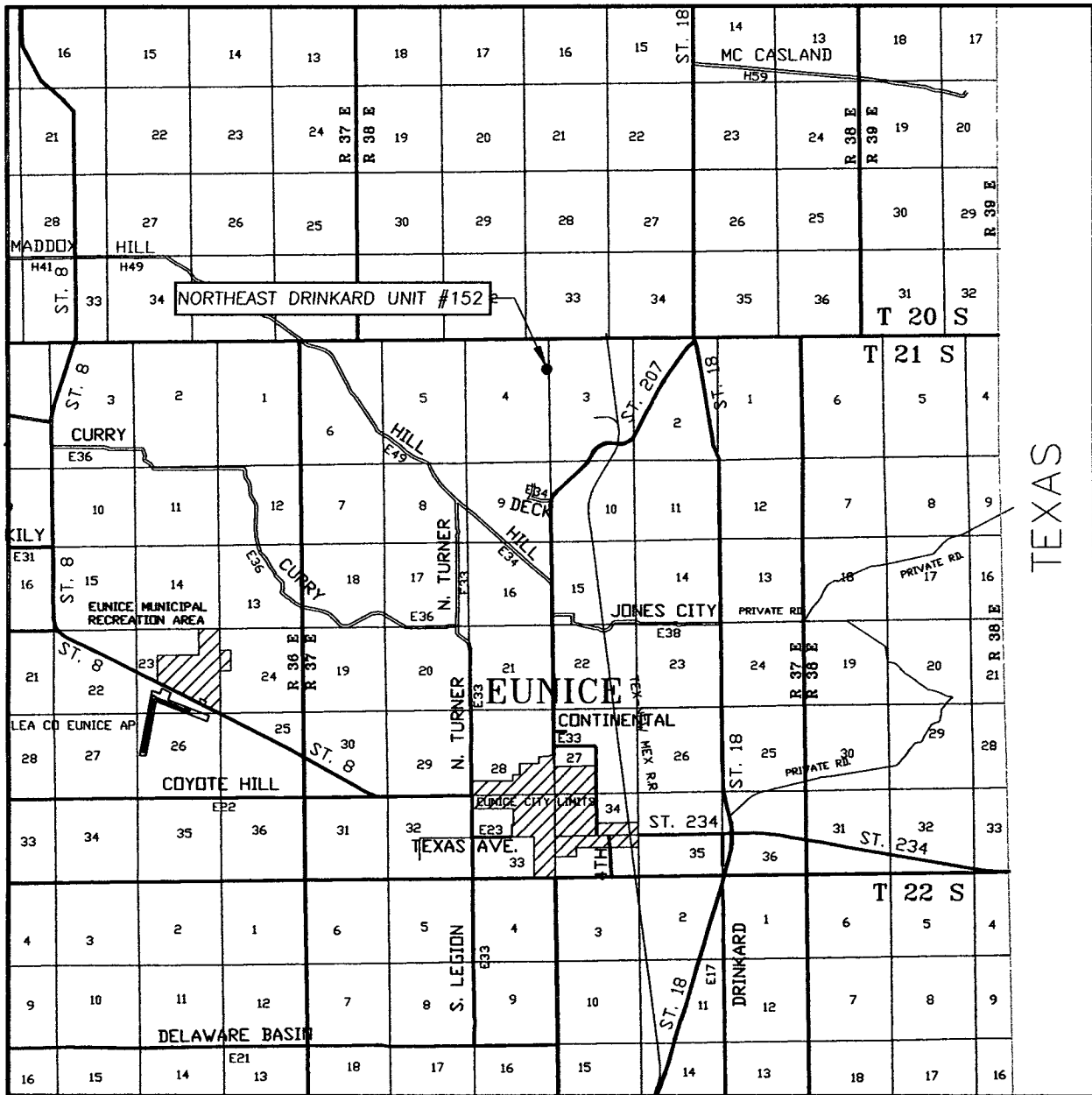
PROVIDING SURVEYING SERVICES
SINCE 1946
JOHN WEST SURVEYING COMPANY
412 N. DAL PASO
HOBBS, N.M. 88240
(505) 393-3117

APACHE CORPORATION

NORTHEAST DRINKARD UNIT #152 WELL
LOCATED 1900 FEET FROM THE NORTH LINE
AND 140 FEET FROM THE EAST LINE OF SECTION 4,
TOWNSHIP 21 SOUTH, RANGE 37 EAST, N.M.P.M.,
LEA COUNTY, NEW MEXICO.

| | |
|-------------------------|---------------------|
| Survey Date: 11/07/08 | Sheet 1 of 1 Sheets |
| W.O. Number: 08.11.1676 | Dr By: JC |
| Date: 11/12/08 | 08111676 |
| | Scale: 1"=100' |

VICINITY MAP



SCALE: 1" = 2 MILES

SEC. 4 TWP. 21-S RGE. 37-E

SURVEY N.M.P.M.

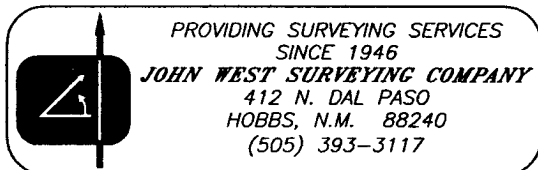
COUNTY LEA STATE NEW MEXICO

DESCRIPTION 1900' FNL & 140' FEL

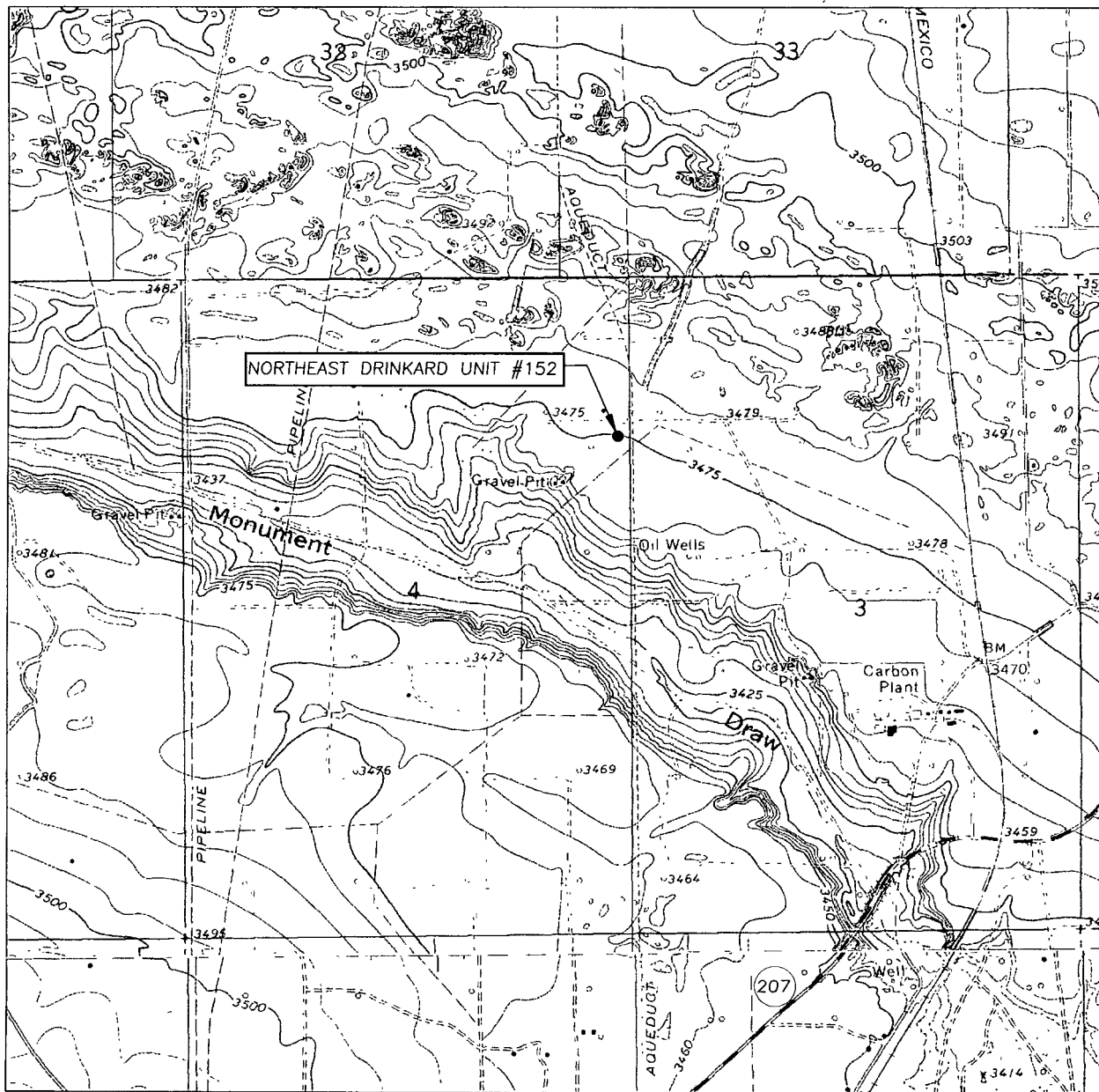
ELEVATION 3476'

OPERATOR APACHE CORPORATION

LEASE NORTHEAST DRINKARD UNIT



LOCATION VERIFICATION MAP



SCALE: 1" = 2000'

CONTOUR INTERVAL:
HOBBS SW, N.M. - 5'
EUNICE, N.M. - 10'

SEC. 4 TWP. 21-S RGE. 37-E

SURVEY N.M.P.M.

COUNTY LEA STATE NEW MEXICO

DESCRIPTION 1900' FNL & 140' FEL

ELEVATION 3476'

OPERATOR APACHE CORPORATION

LEASE NORTHEAST DRINKARD UNIT

U.S.G.S. TOPOGRAPHIC MAP

HOBBS SW, N.M.

