

RECEIVED

DISTRICT I

1625 N FRENCH DR., HOBBS, NM 88240

DISTRICT II

1301 W. GRAND AVENUE, ALBUQUERQUE, NM 80210

DISTRICT III

1000 Rio Brazos Rd., Aztec, NM 87410

DISTRICT IV

1220 S. ST. FRANCIS DR., SANTA FE, NM 87505

State of New Mexico

Energy, Minerals and Natural Resources Department

Form C-102

Revised October 12, 2005

Submit to Appropriate District Office

State Lease - 4 Copies

Fee Lease - 3 Copies

OIL CONSERVATION DIVISION

1220 SOUTH ST. FRANCIS DR.

Santa Fe, New Mexico 87505

WELL LOCATION AND ACREAGE DEDICATION PLAT

☐ AMENDED REPORT

| | | |
|----------------------------|-------------------------------------|----------------------------------|
| API Number 30-025-38830 | Pool Code 44500 | Pool Name Maljamar:Yeso, West |
| Property Code 302508 | Property Name JC FEDERAL | Well Number 18 |
| OGRID No. 229137 | Operator Name COG OPERATING, LLC | Elevation 4029' |

Surface Location

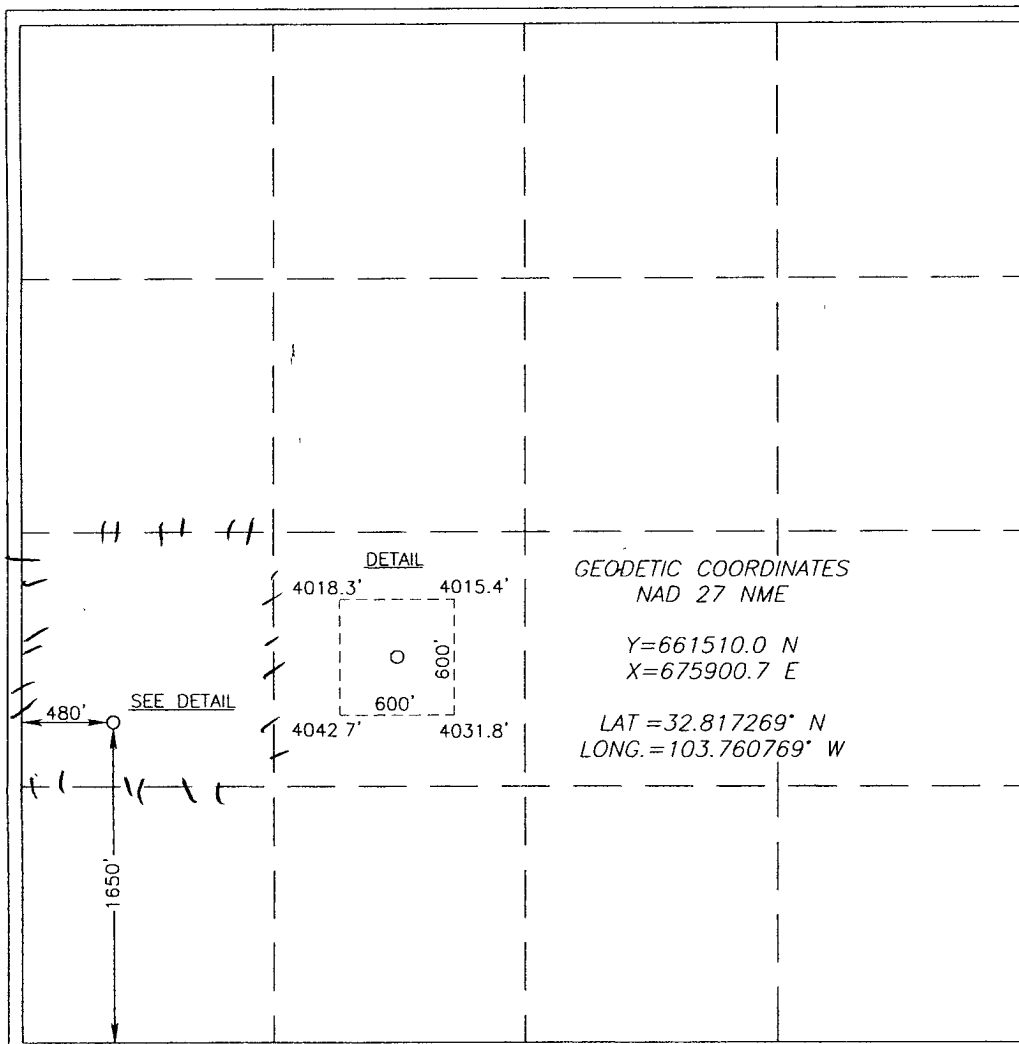
| | | | | | | | | | |
|--------------------|---------------|------------------|---------------|---------|-----------------------|---------------------------|----------------------|------------------------|---------------|
| UL or lot No. L | Section 22 | Township 17-S | Range 32-E | Lot Idn | Feet from the 1650 | North/South line SOUTH | Feet from the 480 | East/West line WEST | County LEA |
|--------------------|---------------|------------------|---------------|---------|-----------------------|---------------------------|----------------------|------------------------|---------------|

Bottom Hole Location If Different From Surface

| | | | | | | | | | |
|---------------|---------|----------|-------|---------|---------------|------------------|---------------|----------------|--------|
| UL or lot No. | Section | Township | Range | Lot Idn | Feet from the | North/South line | Feet from the | East/West line | County |
|---------------|---------|----------|-------|---------|---------------|------------------|---------------|----------------|--------|

| | | | |
|-----------------------|-----------------|--------------------|-----------|
| Dedicated Acres 40 | Joint or Infill | Consolidation Code | Order No. |
|-----------------------|-----------------|--------------------|-----------|

NO ALLOWABLE WILL BE ASSIGNED TO THIS COMPLETION UNTIL ALL INTERESTS HAVE BEEN CONSOLIDATED
OR A NON-STANDARD UNIT HAS BEEN APPROVED BY THE DIVISION



OPERATOR CERTIFICATION

I hereby certify that the information herein is true and complete to the best of my knowledge and belief, and that this organization either owns a working interest or unleased mineral interest in the land including the proposed bottom hole location or has a right to drill this well at this location pursuant to a contract with an owner of such mineral or working interest, or to a voluntary pooling agreement or a compulsory pooling order heretofore entered by the division.

Signature: Kanicia Carrillo Date: 11/20/08

Printed Name: Kanicia Carrillo

SURVEYOR CERTIFICATION

I hereby certify that the well location shown on this plat was plotted from field notes of actual surveys made by me or under my supervision, and that the same is true and correct to the best of my belief.

Date Surveyed: JANUARY 3, 2008
Signature & Seal of Professional Surveyor: Ronald J. Eidson
Professional Surveyor No.: 3239

Certificate No. GARY EIDSON 12641
RONALD EIDSON 3239