

District I
1625 N. French Dr., Hobbs, NM 88240
District II
1301 W. Grand Avenue, Artesia, NM 88210
District III
1000 Rio Brazos Road, Aztec, NM 87410
District IV
1220 S. St. Francis Dr., Santa Fe, NM 87505

State of New Mexico
Energy Minerals and Natural Resources

NOV 14 2003
Conservation Division
1220 South St. Francis Dr.
Santa Fe, NM 87505

Form C-101
Revised June 10, 2003

Submit to appropriate District Office
State Lease - 6 Copies
Fee Lease - 5 Copies

☐ AMENDED REPORT

APPLICATION FOR PERMIT TO DRILL, RE-ENTER, DEEPEN, PLUGBACK, OR ADD A ZONE

| | | |
|--|--|---|
| ¹ Operator Name and Address PATTERSON PETROLEUM LP P.O. Drawer 1416 Snyder, TX 79550 | | ² OGRID Number 141928 |
| | | ³ API Number 30 - 025-36224 |
| ³ Property Code 32093 | ⁵ Property Name HEYWARD "32" STATE COM | ⁶ Well No. 1 |

⁷ Surface Location

| | | | | | | | | | |
|--------------------|---------------|------------------|---------------|---------|-----------------------|---------------------------|-----------------------|------------------------|---------------|
| UL or lot no. L | Section 32 | Township 17-S | Range 34-E | Lot Idn | Feet from the 1500 | North/South line South | Feet from the 1200 | East/West line West | County Lea |
|--------------------|---------------|------------------|---------------|---------|-----------------------|---------------------------|-----------------------|------------------------|---------------|

⁸ Proposed Bottom Hole Location If Different From Surface

| | | | | | | | | | | |
|----------------------------------|---------|----------|-------|---------|------------------------------|------------------|---------------|----------------|--------|-------------------------------|
| UL or lot no. | Section | Township | Range | Lot Idn | Feet from the | North/South line | Feet from the | East/West line | County | |
| <i>Wildcat</i> -Vacuum; Atoka | | | | | ⁹ Proposed Pool 1 | | | | | ¹⁰ Proposed Pool 2 |

| | | | | |
|-----------------------------------|--|----------------------------------|------------------------------------|---|
| ¹¹ Work Type Code P | ¹² Well Type Code G | ¹³ Cable/Rotary R | ¹⁴ Lease Type Code S | ¹⁵ Ground Level Elevation 4075' |
| ¹⁶ Multiple No | ¹⁷ Proposed Depth PB 13,150' | ¹⁸ Formation Atoka | ¹⁹ Contractor Pool | ²⁰ Spud Date |

²¹ Proposed Casing and Cement Program

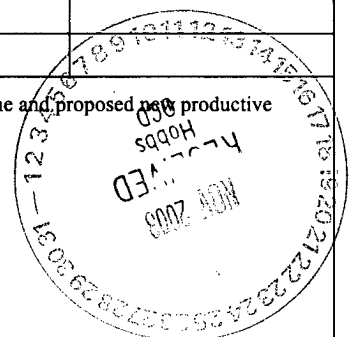
| | | | | | |
|-----------|-------------|--------------------|---------------|-----------------|---------------|
| Hole Size | Casing Size | Casing weight/foot | Setting Depth | Sacks of Cement | Estimated TOC |
| 17-1/2" | 13-3/8" | 48 | 420' | 500 | Surface |
| 12-1/4" | 9-5/8" | 40 | 4,843' | 1500 | Surface |
| 8-3/4" | 5-1/2" | 17 | 13,643' | 1000 | 9046' |
| | | | | | |
| | | | | | |

²² Describe the proposed program. If this application is to DEEPEN or PLUG BACK, give the data on the present productive zone and proposed new productive zone. Describe the blowout prevention program, if any. Use additional sheets if necessary.

Propose to plug back with a CIBP set @13,170' + 20' cement on top.
Perforate Atoka Sand (12,921-31') and test.

Permit Expires 1 Year From Approval
Date Unless Drilling Underway

Plugback



| | | | |
|---|--|--|--|
| ²³ I hereby certify that the information given above is true and complete to the best of my knowledge and belief. Signature: <i>Nolan von Roeder</i> Printed name: Nolan von Roeder Title: Engineer E-mail Address: vroedern@patenergy.com Date: 11/06/03 | | OIL CONSERVATION DIVISION Approved by: <i>Chris Williams</i> Title: OC DISTRICT SUPERVISOR/GENERAL MANAGER Approval Date: DEC 01 2003 Expiration Date: Conditions of Approval: Attached <input type="checkbox"/> | |
|---|--|--|--|

DISTRICT I
P.O. Box 1980, Hobbs, NM 88241-1980

DISTRICT II
P.O. Drawer DD, Artesia, NM 88211-0719

DISTRICT III
1000 Rio Brazos Rd., Aztec, NM 87410

DISTRICT IV
P.O. Box 2088, Santa Fe, N.M. 87504-2088

State of New Mexico

Energy, Minerals and Natural Resources Department

OIL CONSERVATION DIVISION

NOV 14 2003

P.O. Box 2088

Santa Fe, New Mexico 87504-2088

Form C-102

Revised February 10, 1994

Submit to Appropriate District Office

State Lease - 4 Copies

Fee Lease - 3 Copies

WELL LOCATION AND ACREAGE DEDICATION PLAT

☐ AMENDED REPORT

| | | |
|----------------------------|---|---|
| API Number 42-025-36224 | Pool Code | Pool Name <i>Wildcat</i> <i>Vacuum; Atoka</i> |
| Property Code 32093 | Property Name HEYWARD "32" STATE COM | Well Number 1 |
| OGRID No. 141928 | Operator Name PATTERSON PETROLEUM LP | Elevation 4075' |

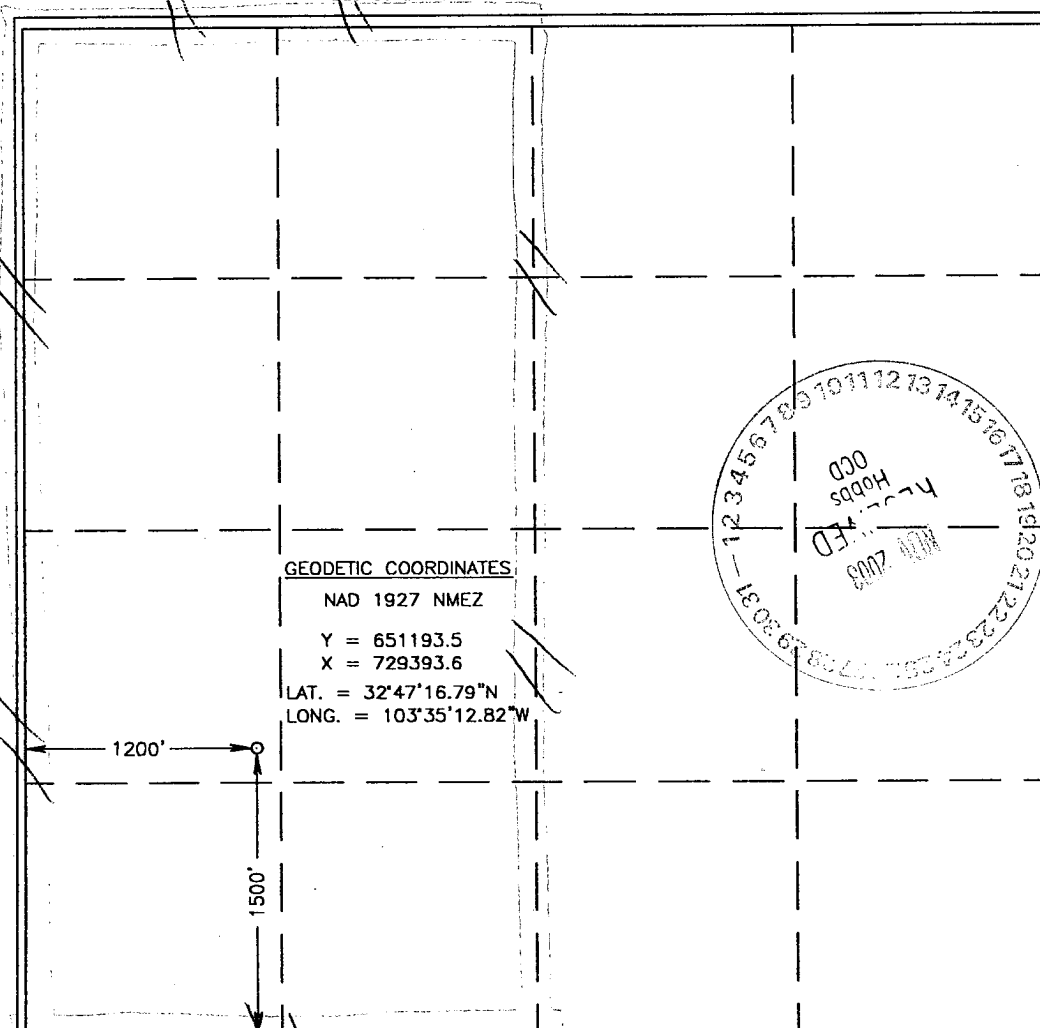
Surface Location

| | | | | | | | | | |
|--------------------|---------------|------------------|---------------|---------|------------------------|---------------------------|-----------------------|------------------------|---------------|
| UL or lot No. L | Section 32 | Township 17-S | Range 34-E | Lot Idn | Feet from the 1500' | North/South line SOUTH | Feet from the 1200 | East/West line WEST | County LEA |
|--------------------|---------------|------------------|---------------|---------|------------------------|---------------------------|-----------------------|------------------------|---------------|

Bottom Hole Location If Different From Surface

| | | | | | | | | | |
|------------------------|-----------------|--------------------|-----------|---------|---------------|------------------|---------------|----------------|--------|
| UL or lot No. | Section | Township | Range | Lot Idn | Feet from the | North/South line | Feet from the | East/West line | County |
| | | | | | | | | | |
| Dedicated Acres 320 | Joint or Infill | Consolidation Code | Order No. | | | | | | |

NO ALLOWABLE WILL BE ASSIGNED TO THIS COMPLETION UNTIL ALL INTERESTS HAVE BEEN CONSOLIDATED
OR A NON-STANDARD UNIT HAS BEEN APPROVED BY THE DIVISION



OPERATOR CERTIFICATION

I hereby certify that the information contained herein is true and complete to the best of my knowledge and belief.

Nolan von Roeder

Signature

Nolan von Roeder

Printed Name

Engineer

Title

11/06/03

Date

SURVEYOR CERTIFICATION

I hereby certify that the well location shown on this plat was plotted from field notes of actual surveys made by me or under my supervision, and that the same is true and correct to the best of my belief.

FEBRUARY 19, 2003

Date Surveyed AWB

Signature & Seal of Professional Surveyor

Ronald J. Eidson 2/21/03
03.11.0208

Certificate No. RONALD J. EIDSON 3239
GARY EIDSON 12641