

DISTRICT I  
1625 N. French Dr., Hobbs, NM 88240  
DISTRICT II  
1301 W. Grand Avenue, Artesia, NM 88210  
DISTRICT III  
1000 Rio Brazos Rd., Aztec, NM 87410  
DISTRICT IV  
1220 S. St. Francis Dr., Santa Fe, NM 87505

RECEIVED

DEC 15 2008

HOBSOCD

State of New Mexico  
Energy, Minerals and Natural Resources Department

Form C-102  
Revised October 12, 2005

Submit to Appropriate District Office  
State Lease - 4 Copies  
Fee Lease - 3 Copies

OIL CONSERVATION DIVISION  
1220 South St. Francis Dr.  
Santa Fe, New Mexico 87505

☐ AMENDED REPORT

WELL LOCATION AND ACREAGE DEDICATION PLAT

API Number 30-025-39072	Pool Code 23000	Pool Name Eunice Monument; Grayburg-San Andres
Property Code 302708	Property Name NMGSA UNIT	Well Number 380
OGRID No. 873	Operator Name APACHE CORPORATION	Elevation 3642'

Surface Location

UL or lot No.	Section	Township	Range	Lot Idn	Feet from the	North/South line	Feet from the	East/West line	County
B	30	19 S	37 E		203	NORTH	2372	EAST	LEA

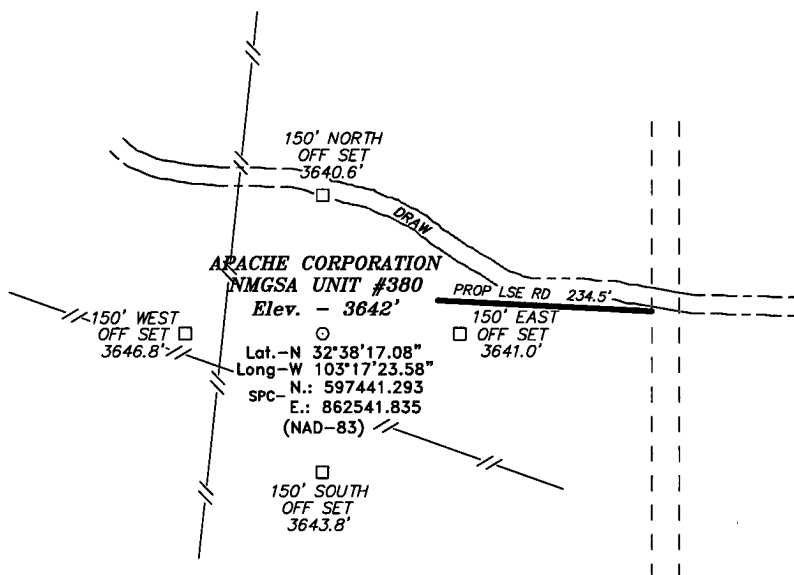
Bottom Hole Location If Different From Surface

UL or lot No.	Section	Township	Range	Lot Idn	Feet from the	North/South line	Feet from the	East/West line	County
B	30	19 S	37 E		10	NORTH	2630	EAST	LEA
Dedicated Acres	Joint or Infill	Consolidation Code	Order No.						

NO ALLOWABLE WILL BE ASSIGNED TO THIS COMPLETION UNTIL ALL INTERESTS HAVE BEEN CONSOLIDATED  
OR A NON-STANDARD UNIT HAS BEEN APPROVED BY THE DIVISION

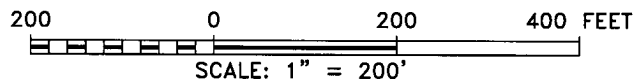
<p><b>BOTTOM HOLE LOCATION</b> Lat - N32°38'19.01" Long - W103°17'26.61" SPC- N.: 597633.911 E.: 862281.308 (NAD-83)</p>	<p><b>SURFACE LOCATION</b> Lat - N32°38'17.08" Long - W103°17'23.58" SPC- N.: 597441.293 E.: 862541.835 (NAD-83)</p>	<p><b>OPERATOR CERTIFICATION</b> I hereby certify that the information contained herein is true and complete to the best of my knowledge and belief, and that this organization either owns a working interest or unleased mineral interest in the land including the proposed bottom hole location pursuant to a contract with an owner of such a mineral or working interest, or to a voluntary pooling agreement or a compulsory pooling order heretofore entered by the division.  Signature: <u>[Signature]</u> Date: <u>12/11/08</u> Printed Name: <u>SAM HAMPTON</u></p>
		<p><b>SURVEYOR CERTIFICATION</b> I hereby certify that the well location shown on this plat was plotted from field notes of actual surveys made by me or under my supervision, and that the same is true and correct to the best of my belief.  OCTOBER 21, 2008 Date Surveyed: <u>10/21/08</u> Signature: <u>[Signature]</u> Professional Surveyor: <u>7977</u> Certificate No. Gary L. Jones 7977</p>
		<p><b>BASIN SURVEYS</b></p>

SECTION 30, TOWNSHIP 19 SOUTH, RANGE 37 EAST, N.M.P.M.,  
LEA COUNTY, NEW MEXICO.



Directions to Location:

FROM THE JUNCTION OF HWY 62-180 AND CO. RD. 41 (MADDOX), GO SOUTH 4.0 MILES ON MADDOX TO LEASE ROAD, ON LEASE ROAD GO EASTERLY 0.1 MILES TO WELL PAD, CONTINUE EASTERLY 0.2 MILES TO LEASE ROAD, ON LEASE ROAD GO NORTH 0.1 MILES TO PROPOSED LEASE ROAD.



**APACHE CORPORATION**

REF: NMGSA UNIT #380 / WELL PAD TOPO

THE NMGSA UNIT #380 LOCATED 203'

FROM THE NORTH LINE AND 2372' FROM THE EAST LINE OF  
SECTION 30, TOWNSHIP 19 SOUTH, RANGE 37 EAST,  
N.M.P.M., LEA COUNTY, NEW MEXICO.

**BASIN SURVEYS** P.O. BOX 1786-HOBBS, NEW MEXICO

W.O. Number: 20716

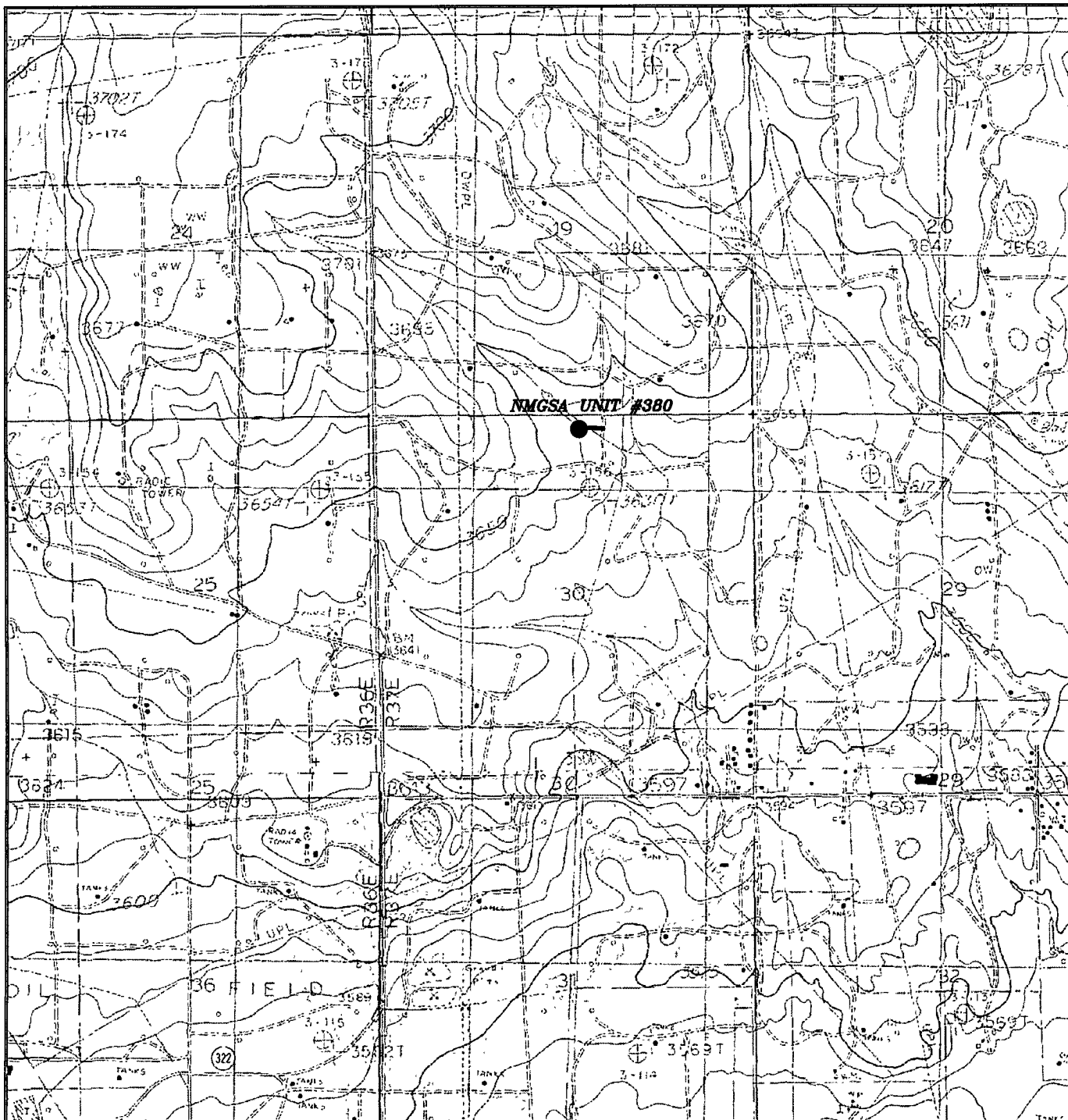
Drawn By: J. M. SMALL

Date: 10-23-2008

Disk: 20716 JMS

Survey Date: 10-22-2008

Sheet 1 of 1 Sheets



### NMGSA UNIT #380

Located at 203' FNL AND 2372' FEL  
Section 30, Township 19 South, Range 37 East,  
N.M.P.M., Lea County, New Mexico.



P.O. Box 1786  
1120 N. West County Rd.  
Hobbs, New Mexico 88241  
(505) 393-7316 - Office  
(505) 392-3074 - Fax  
basinsurveys.com

W.O. Number: 20716

Survey Date: 10-22-2008

Scale: 1" = 2000'

Date: 10-23-2008

APACHE  
CORP.

