

## State of New Mexico

Energy, Minerals and Natural Resources Department

## DISTRICT I

1625 N. FRENCH DR., HOBBS, NM 88240

## DISTRICT II

1301 W. GRAND AVENUE, ARTESIA, NM 88210

## DISTRICT III

1000 Rio Brazos Rd., Aztec, NM 87410

## DISTRICT IV

1220 S. ST. FRANCIS DR., SANTA FE, NM 87505

## OIL CONSERVATION DIVISION

1220 SOUTH ST. FRANCIS DR.  
Santa Fe, New Mexico 87505

Form C-102

Revised October 12, 2005

Submit to Appropriate District Office

State Lease - 4 Copies

Fee Lease - 3 Copies

## WELL LOCATION AND ACREAGE DEDICATION PLAT

☐ AMENDED REPORT

API Number <b>30-025-39009</b>	Pool Code <b>41440 41450</b>	Pool Name <b>LUSK; BONE SPRING North</b>
Property Code <b>36522</b>	Property Name <b>FALCON FEDERAL</b>	Well Number <b>2</b>
OGRID No. <b>14049</b>	Operator Name <b>MARBOB ENERGY CORPORATION</b>	Elevation <b>3650'</b>

## Surface Location

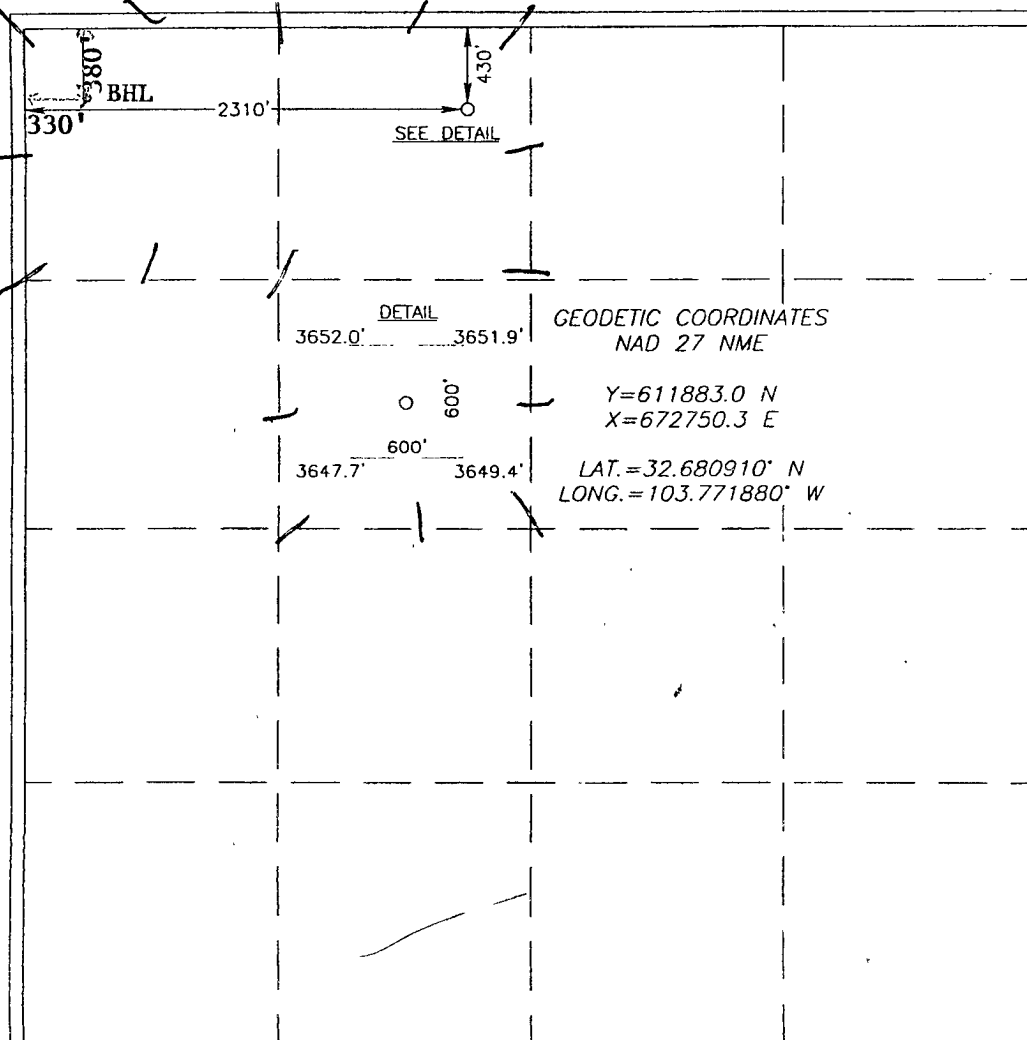
UL or lot No.	Section	Township	Range	Lot Idn	Feet from the	North/South line	Feet from the	East/West line	County
C	9	19-S	32-E		430	NORTH	2310	WEST	LEA

## Bottom Hole Location If Different From Surface

UL or lot No.	Section	Township	Range	Lot Idn	Feet from the	North/South line	Feet from the	East/West line	County
D	9	19-S	32-E		380	NORTH	330	WEST	LEA

Dedicated Acres	Joint or Infill	Consolidation Code	Order No.
120	<input checked="" type="checkbox"/>		

NO ALLOWABLE WILL BE ASSIGNED TO THIS COMPLETION UNTIL ALL INTERESTS HAVE BEEN CONSOLIDATED  
OR A NON-STANDARD UNIT HAS BEEN APPROVED BY THE DIVISION



## OPERATOR CERTIFICATION

I hereby certify that the information herein is true and complete to the best of my knowledge and belief, and that this organization either owns a working interest or unleased mineral interest in the land including the proposed bottom hole location or has a right to drill this well at this location pursuant to a contract with an owner of such mineral or working interest, or to a voluntary pooling agreement or a compulsory pooling order heretofore entered by the division.

Nancy T. Agnew 5/6/08  
Signature Date

Nancy T. Agnew  
Printed Name

## SURVEYOR CERTIFICATION

I hereby certify that the well location shown on this plat was plotted from field notes of actual surveys made by me or under my supervision, and that the same is true and correct to the best of my belief.

Date Surveyed APR 10 2008 LA  
Signature & Seal of Professional Surveyor Ronald J. Eidson

Certificate No. GARY G. EIDSON 12641  
RONALD J. EIDSON 3239