

DISTRICT I
1625 N. French Dr., Hobbs, NM 88240

DISTRICT II
1301 W. Grand Ave., Artesia, NM 88210

DISTRICT III
1000 Rio Brazos Rd., Aztec, NM 87410

DISTRICT IV
1220 St. Francis Dr., Santa Fe, NM 87505

State of New Mexico
Energy, Minerals and Natural Resources Department

Form C-1021
Revised October 12, 2005

Submit to Appropriate District Office
State Lease-4 copies
Fee Lease-3 copies

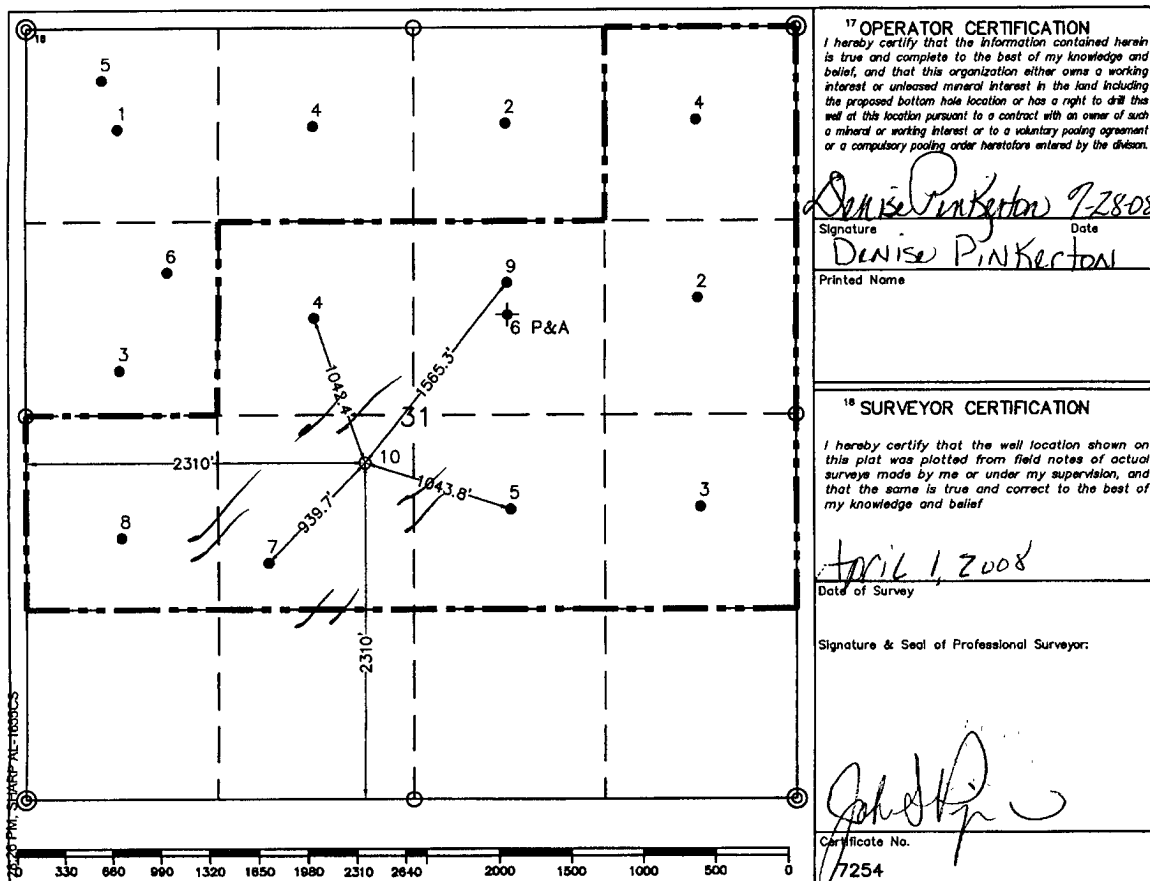
OIL CONSERVATION DIVISION
1220 South St. Francis Drive
Santa Fe, NM 87505

☐ AMENDED REPORT

WELL LOCATION AND ACREAGE DEDICATION PLAT

1 API Number		2 Pool Code 7900		3 Pool Name BRUNSON-DRINKARD-ABD; South			
Property Code		Property Name SCARBOROUGH EST.		Well Number 10			
4 GRID No. 4323		Operator Name CHEVRON USA, INC.		Elevation 3321'			
10 Surface Location							
UL or lot no. K	Section 31	Township 22-S	Range 38-E	Lot Idn 2310'	Feet from the North/South line South 2310'	East/West line West	County Lea
11 Bottom Hole Location if Different From Surface							
UL or lot no.	Section	Township	Range	Lot Idn	Feet from the North/South line	Feet from the	East/West line County
12 Dedicated Acres 20 40		13 Joint or Infill		14 Consolidation Code		15 Order No.	

NO ALLOWABLE WILL BE ASSIGNED TO THIS COMPLETION UNTIL ALL INTERESTS HAVE BEEN CONSOLIDATED
OR A NON-STANDARD UNIT HAS BEEN APPROVED BY THE DIVISION.



○ = Staked Location • = Producing Well ● = Injection Well ◇ = Water Supply Well ◆ = Plugged & Abandon Well
⊙ = Found Section Corner, 2 or 3" Iron Pipe & GLO B.C. ○ = Found 1/4 Section Corner, 1" Iron Pipe & GLO B.C.

ADDITIONAL INFORMATION ON THE LOCATION

State Plane Coordinates			
Northing 492349.99 (1927 NAD= 492292.50)		Easting 922025.63 (1927 NAD= 880840.09)	
Latitude 32°20'51.062"		Longitude 103°06'02.263"	
Zone	North American Datum	Combined Grid Factor	Coordinate File
East	1983/HARN	0.999919723	Weatherly83E.crd
Drawing File		Field Book	
Weatherly83E.Dwg			