

UNITED STATES
DEPARTMENT OF THE INTERIOR
BUREAU OF LAND MANAGEMENTOCD HOBBS
RECEIVED

DEC 30 2008

FORM APPROVED
OMB No 1004-0137
Expires July 31, 2010**SUNDRY NOTICES AND REPORTS ON WELLS**
Do not use this form for proposals to drill or to re-enter an abandoned well. Use Form 3160-3 (APD) for such proposals.

5. Lease Serial No.

NM-97165

6. If Indian, Allottee or Tribe Name

SUBMIT IN TRIPLICATE - Other instructions on page 2.

1. Type of Well

☒ Oil Well☐ Gas Well☐ Other

2. Name of Operator

Lime Rock Resources A, L.P.

3a. Address

Heritage Plaza, 1111 Bagby, Suite 4600; Houston, TX, 77002

3b. Phone No. (include area code)

(713) 292-9514

4. Location of Well (Footage, Sec., T., R., M., or Survey Description)

Section 7-T26S-R38E
330' FSL & 1,880' FWL (Unit N, SESW)

7. If Unit of CA/Agreement, Name and/or No.

8. Well Name and No.

Ed Powell BGP Federal 1

9. API Well No.

30-025-33793

10. Field and Pool or Exploratory Area

Dublin Devonian, East

11. Country or Parish, State

Lea County, New Mexico

12. CHECK THE APPROPRIATE BOX(ES) TO INDICATE NATURE OF NOTICE, REPORT OR OTHER DATA

TYPE OF SUBMISSION	TYPE OF ACTION			
<input type="checkbox"/> Notice of Intent	<input type="checkbox"/> Acidize	<input type="checkbox"/> Deepen	<input type="checkbox"/> Production (Start/Resume)	<input type="checkbox"/> Water Shut-Off
<input checked="" type="checkbox"/> Subsequent Report	<input type="checkbox"/> Alter Casing	<input type="checkbox"/> Fracture Treat	<input type="checkbox"/> Reclamation	<input type="checkbox"/> Well Integrity
<input type="checkbox"/> Final Abandonment Notice	<input type="checkbox"/> Casing Repair	<input type="checkbox"/> New Construction	<input type="checkbox"/> Recomplete	<input type="checkbox"/> Other
	<input type="checkbox"/> Change Plans	<input checked="" type="checkbox"/> Plug and Abandon	<input type="checkbox"/> Temporarily Abandon	
	<input type="checkbox"/> Convert to Injection	<input type="checkbox"/> Plug Back	<input type="checkbox"/> Water Disposal	

13. Describe Proposed or Completed Operation: Clearly state all pertinent details, including estimated starting date of any proposed work and approximate duration thereof. If the proposal is to deepen directionally or recompleat horizontally, give subsurface locations and measured and true vertical depths of all pertinent markers and zones. Attach the Bond under which the work will be performed or provide the Bond No. on file with BLM/BIA. Required subsequent reports must be filed within 30 days following completion of the involved operations. If the operation results in a multiple completion or recompleat in a new interval, a Form 3160-4 must be filed once testing has been completed. Final Abandonment Notices must be filed only after all requirements, including reclamation, have been completed and the operator has determined that the site is ready for final inspection.)

11/12/2008: MIRU. POOH with rods and pump.

11/13/2008: ND wellhead. NU BOP's. Unset anchor.

11/17/2008: POOH with tubing. RIH & set CIBP @ 9,960' - dump 35' cement on top of plug.

11/18/2008: RIH with tubing. Rig broke down.

11/19/2008: Circulate hole with mud. Pick up to 8,937'. Spot 25 sxs cement plug. POOH. RIH with packer to locate hole in casing.

11/20/2008: SD due to wind.

11/21/2008: Found hole in casing from 6,780' to 6,792'. POOH.

11/24/2008: RIH & perforate 5-1/2" casing @ 8,194'. POOH. RIH with packer and tubing. Pump 55 sxs cement. POOH & WOC.

11/25/2008: RIH & tag cement @ 8,006'. POOH. ND BOP's & NU wellhead. RIH & cut casing @ 7,987'.

11/26/2008: MIRU casing jacks. POOH with 2 joints 5-1/2" casing.

12/01/2008: POOH & lay down 170 joints 5-1/2" casing.

12/02/2008: NU BOP's. RIH & spot 45 sxs @ 7,062'. POOH & WOC. RIH & tag cement @ 5,885'. POOH to 5,427' & spot 55 sxs cement. POOH & WOC.

12/03/2008: RIH & tag cement @ 5,231'. POOH & spot 60 sxs @ 4,257'. POOH & WOC. RIH & tag cement @ 4,145' (30' low).

12/04/2008: RIH & tag cement @ 4,145' & top off with 25 sxs cement. POOH & WOC. RIH & tag cement @ 4,051'. POOH to 2,665' & spot 40 sxs cement.

POOH to 1,300' & spot 40 sxs cement. POOH to 520' & spot 40 sxs cement. POOH & WOC.

12/15/2008: RIH & tag cement @ 370'. POOH. ND BOP's. RIH to 60' & circulate 20 sxs cement to surface. Dig out cellar & cut off wellhead. Install P&A marker. Level location. Cut-off anchors. RD.

Well is P&A'd.

Approved as to plugging of the well bore.
Liability under bond is retained until
Surface restoration is completed.

14. I hereby certify that the foregoing is true and correct Name (Printed/Typed)

C. Tim Miller

Title

Vice President - Operations

Signature

Date 12/09/2008

THIS SPACE FOR FEDERAL OR STATE OFFICE USE

Approved by

Title

Office

Conditions of approval, if any, are attached. Approval of this notice does not warrant or certify that the applicant holds legal or equitable title to those rights in the subject lease which would entitle the applicant to conduct operations thereon

Title 18 U.S.C. Section 1001 and Title 43 U.S.C. Section 1212, make it a crime for any person knowingly and willfully to make to any department or agency of the United States any false, fictitious or fraudulent statements or representations as to any matter within its jurisdiction

(Instructions on page 2)

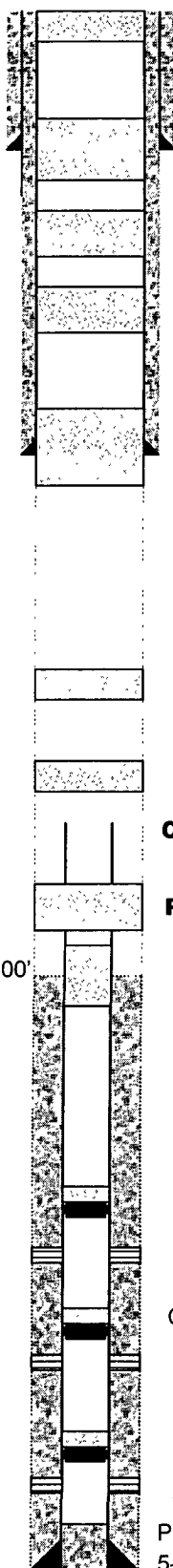
APPROVED

DEC 16 2008

JAMES A. AMOS
SUPERVISOR-EPS

FINAL

ABANDONMENT



**Circulated cement from
60' back to surface**

11-3/4", 42#, H-40, ST&C Casing @ 462'

Spotted 40 sx plug from 520' to 370' (tagged top of plug)

Spotted 40 sx plug @ 1,300'

Spotted 40 sx plug @ 2,665'

8-5/8", 32#, J-55 & HC-80, ST&C Casing @ 4,170'

Spotted 85 sx plug from 4,257' to 4,051' (tagged top of plug)

Spotted 50 sx plug from 5,427' to 5,231' (tagged top of plug)

Spotted 50 sx plug from 7,062' to 6,885' (tagged top of plug)

Cut 5-1/2" casing @ 7,987'

Perforated at 8,194' and pumped 55 sx cement

TOC @ 8,400'

Spotted 25 sx plug @ 8,937'

**Set Cast Iron Bridge Plug @ 9,960' and spotted 35' cement on top of
plug (tagged top of plug)**

Devonian Perfs: 10,010-46' (37 - 0.42" DIA holes)

CIBP @ 10,460' w/ 35' cement on top

Fusselman Perfs: 10,513-528' (96 - 0.45" DIA holes)

CIBP @ 11,010' w/ 35' cement on top

Ellenburger Perfs: 11,051-60' (20 - 0.42" DIA holes)

PBTD @ 10,679'

5-1/2"; 17#, J-55, L-80, N-80, & S-95; LT&C Casing
@ 11,722'

TD @ 11,722'

**Lime Rock Resources
Ed Powell BGP Federal 1
Sec 7N-26S-38E
Lea County, NM**