

District I  
PO Box 1980, Hobbs, NM 88241-1980

District II  
811 South First, Artesia, NM 88210

District III  
1000 Rio Brazos Rd., Aztec, NM 87410

District IV  
2040 South Pacheco, Santa Fe, NM 87505

State of New Mexico  
Energy, Minerals & Natural Resources Department

OIL CONSERVATION DIVISION  
2040 South Pacheco  
Santa Fe, NM 87505

Form C-101

Revised October 18, 1994

Instructions on back

Submit to Appropriate District Office

State Lease - 6 Copies

Fee Lease - 5 Copies

☐ AMENDED REPORT

## APPLICATION FOR PERMIT TO DRILL, RE-ENTER, DEEPEN, PLUGBACK, OR ADD A ZONE

Operator Name and Address		OGRID Number
Pogo Producing Company P. O. Box 10340 Midland, TX 79702-7340		017891
Property Code		API Number
9333	NBR	30-0 25-36 227
Property Name		Well No.
		3

## Surface Location

UL or lot no.	Section	Township	Range	Lot Idn	Feet from the	North/South line	Feet from the	East/West Line	County
Lot 4	18	22S	33E		660	South	330	West	Lea

## Proposed Bottom Hole Location If Different From Surface

UL or lot no.	Section	Township	Range	Lot Idn	Feet from the	North/South line	Feet from the	East/West Line	County
Proposed Pool 1					Proposed Pool 2				
Red Tank Bone Spring (51683)									

Work Type Code	Well Type Code	Cable/Rotary	Lease Type Code	Ground Level Elevation
N	0	Rotary	S	3576'
Multiple	Proposed Depth	Formation	Contractor	Spud Date
No	10,200'	Bone Spring	Unknown	When approved

## Proposed Casing and Cement Program

Hole Size	Casing Size	Casing weight/foot	Setting Depth	Sacks of Cement	Estimated TOC
25"	20"	Conductor	40'	Redi-mix	surface
17-1/2"	13-3/8"	48	1000'	1000 sks	surface
12-1/4"	8-5/8"	32	4700'	1800 sks	surface
7-7/8"	5-1/2"	17	10,200'	1200 sks	3000' FS

<sup>22</sup>Describe the proposed program. If this application is to DEEPEN or PLUG BACK give the data on the present productive zone and proposed new productive zone. Describe the blowout prevention program, if any. Use additional sheets if necessary.

1. Drill 25" hole to 40'. Set 40' of 20" conductor pipe and cmt to surface w/ Redi-mix.
2. Drill 17-1/2" hole to 1000'. Run & set 1000' of 13-3/8" 48# H-40 ST&C csg. Cmt w/ 1000 sks Cl "C" cmt + additives. Circ cmt to surface.
3. Drill 12-1/4" hole to 4700'. Run & set 4700' of 8-5/8" 32# csg as follows: 500' 8-5/8" 32# S-80 ST&C, 4200' 8-5/8" 32# J-55 ST&C. Cmt w/ 1800 sks Cl "C" cmt + 2% CaCl + 1/4# Flocele/sk. Circ cmt to surface.
4. Drill 7-7/8" hole to 10,200'. Run & set 5-1/2" csg as follows: 3200' 5-1/2" 17# N-80 LT&C, 5000' 5-1/2" 17# J-55 LT&C, 2000' 5-1/2" 17# N-80 LT&C csg. Cmt w/ 1200 sks Cl "H" cmt in 2 stages DV tool @ ±7000'. Est TOC 3000'.

<sup>23</sup>I hereby certify that the information given above is true and complete to the best of my knowledge and belief.

Signature: *Cathy Tomberlin*

Printed name: Cathy Tomberlin

Title: Sr. Operation Tech

Date: 3/14/03 Phone: 915-685-8100

## OIL CONSERVATION DIVISION

Approved By:

Title:

PETROLEUM ENGINEER

Approval Date: MAR 17 2003

Expiration Date:

Conditions of Approval:

Attached: ☐

Permit Expires 1 Year From Approval  
Date Unless Drilling Underway

DISTRICT I  
P.O. Box 1980, Hobbs, NM 88241-1980

State of New Mexico

Energy, Minerals and Natural Resources Department

Form C-102

Revised February 10, 1994

Submit to Appropriate District Office

State Lease - 4 Copies

Fee Lease - 3 Copies

DISTRICT II  
P.O. Drawer 22, Artesia, NM 88211-0719

OIL CONSERVATION DIVISION

P.O. Box 2088

Santa Fe, New Mexico 87504-2088

DISTRICT III  
1000 Rio Brazos Rd., Aztec, NM 87410

DISTRICT IV  
P.O. BOX 2088, SANTA FE, N.M. 87504-2088

WELL LOCATION AND ACREAGE DEDICATION PLAT

☐ AMENDED REPORT

API Number <b>30-025-36227</b>	Pool Code 51683	Pool Name RED TANK - BONE SPRING
Property Code <b>9333</b>	Property Name N.B.R.	Well Number 3
OGED No. 17891	Operator Name POGO PRODUCING COMPANY	Elevation 3676'

Surface Location

UL or lot No.	Section	Township	Range	Lot Idn	Feet from the	North/South line	Feet from the	East/West line	County
4	18	22-S	33-E		660	SOUTH	330	WEST	LEA

Bottom Hole Location If Different From Surface

UL or lot No.	Section	Township	Range	Lot Idn	Feet from the	North/South line	Feet from the	East/West line	County
Dedicated Acres 40		Joint or Infill	Consolidation Code		Order No.				

NO ALLOWABLE WILL BE ASSIGNED TO THIS COMPLETION UNTIL ALL INTERESTS HAVE BEEN CONSOLIDATED  
OR A NON-STANDARD UNIT HAS BEEN APPROVED BY THE DIVISION

LOT 1									
44.70 AC LOT 2									
44.75 AC LOT 3									
44.79 AC LOT 4									
44.84 AC									
330'									
660'									

**OPERATOR CERTIFICATION**

I hereby certify the information contained herein is true and complete to the best of my knowledge and belief.

*Joe T. Janica*  
Signature

Joe T. Janica  
Printed Name

Agent  
Title

05/08/01  
Date

**SURVEYOR CERTIFICATION**

I hereby certify that the well location shown on this plat was plotted from field notes of actual surveys made by me or under my supervision, and that the same is true and correct to the best of my belief.

MAY 02, 2001

Date Surveyed

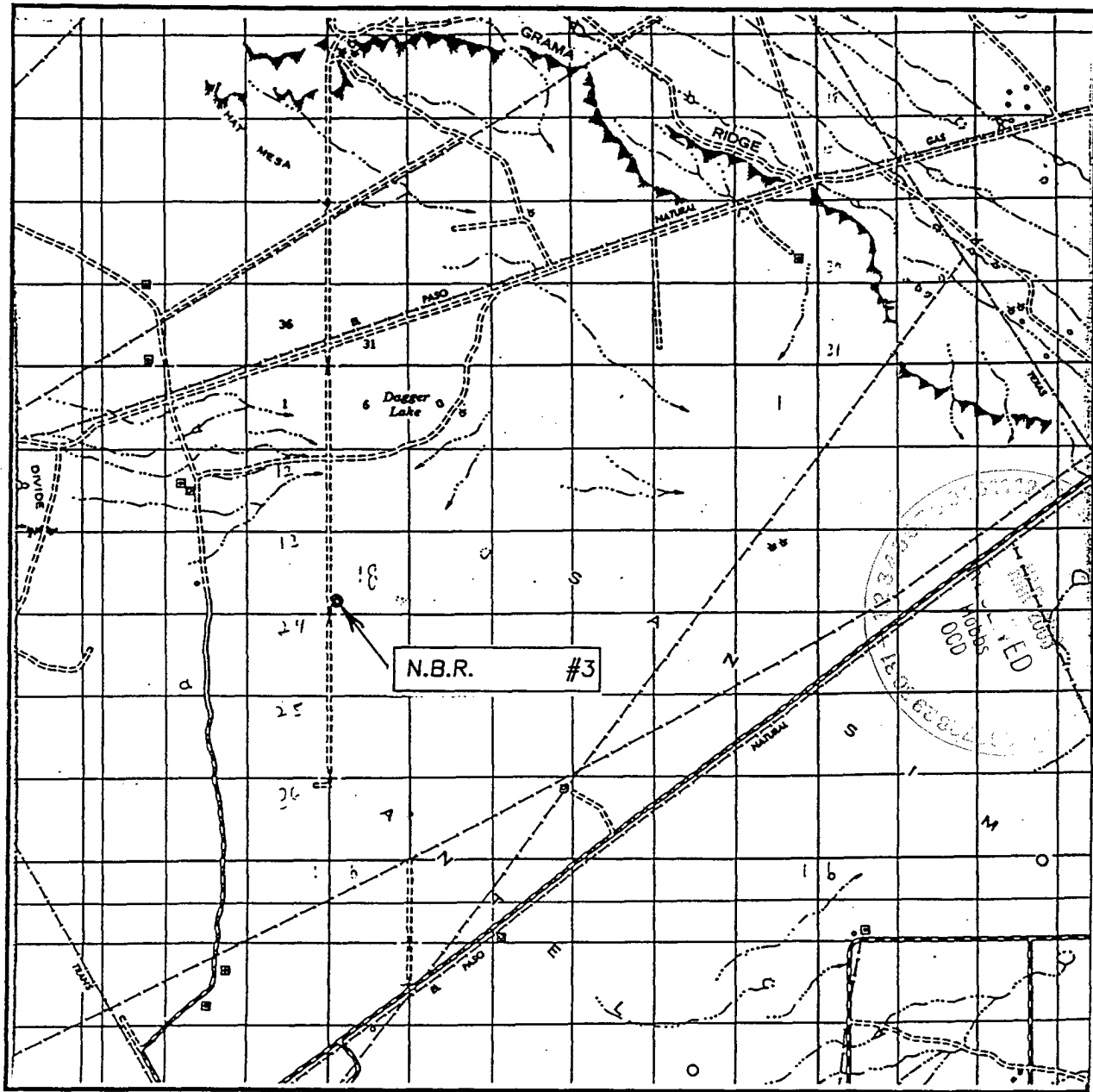
Signature & Seal of Professional Surveyor

*Ronald J. Eidson* 5/03/01

01-11-0517

Certificate No. RONALD J. EIDSON 3239  
GARY EIDSON 12841

# VICINITY MAP



SCALE: 1" = 2 MILES

SEC. 18 TWP. 22-S RGE. 33-E

SURVEY N.M.P.M.

COUNTY LEA

DESCRIPTION 660' FSL & 330' FWL

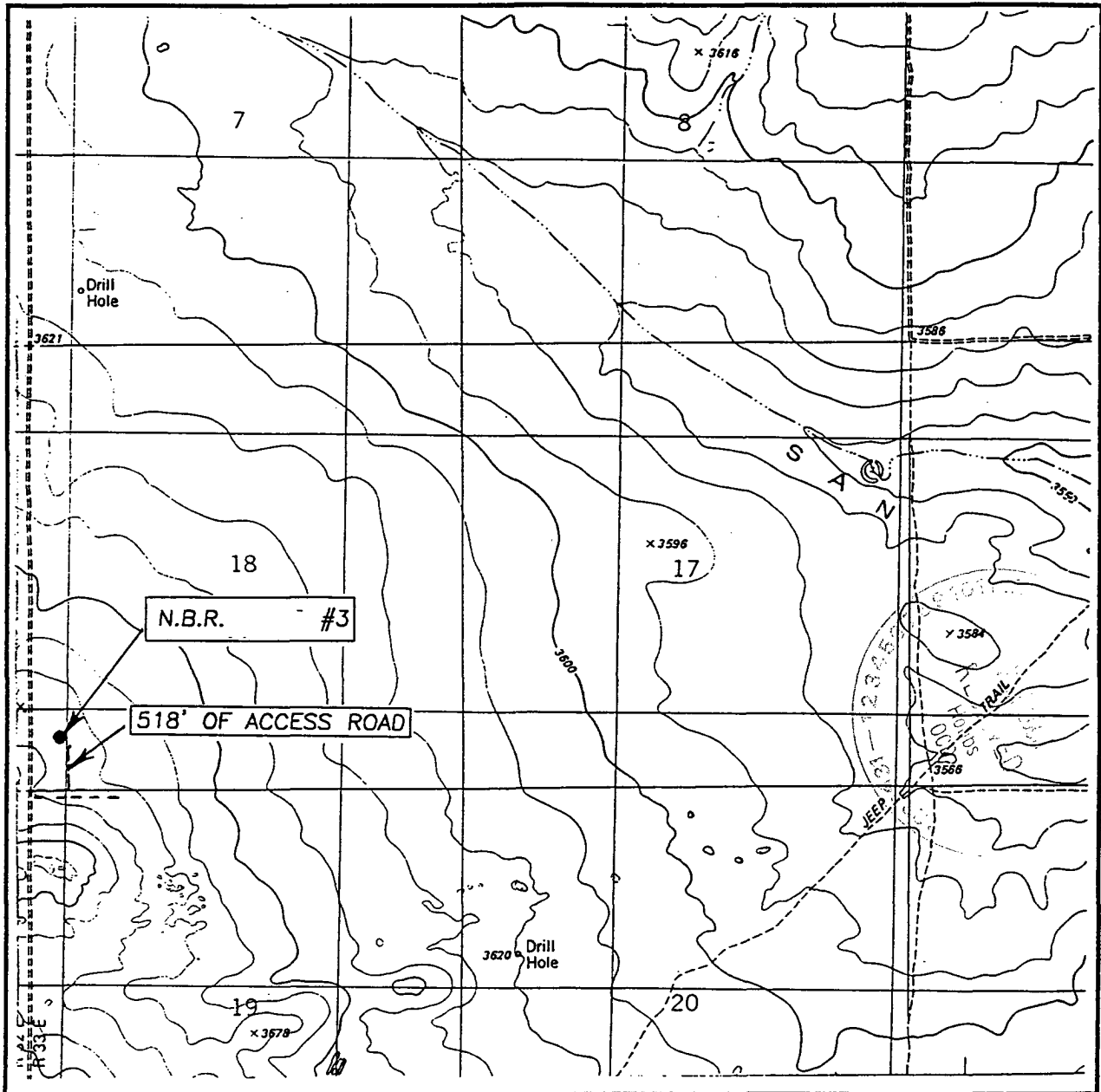
ELEVATION 3676'

OPERATOR POGO PRODUCING COMPANY

LEASE N.B.R.

**JOHN WEST SURVEYING**  
**HOBBS, NEW MEXICO**  
**(505) 393-3117**

# LOCATION VERIFICATION MAP



SCALE: 1" = 2000'

CONTOUR INTERVAL: 10'

GRAMA RIDGE, N.M.

SEC. 18 TWP. 22-S RGE. 33-E

SURVEY N.M.P.M.

COUNTY LEA

DESCRIPTION 660' FSL & 330' FWL

ELEVATION 3676'

OPERATOR POGO PRODUCING COMPANY

LEASE N.B.R.

U.S.G.S. TOPOGRAPHIC MAP  
GRAMA RIDGE, N.M.

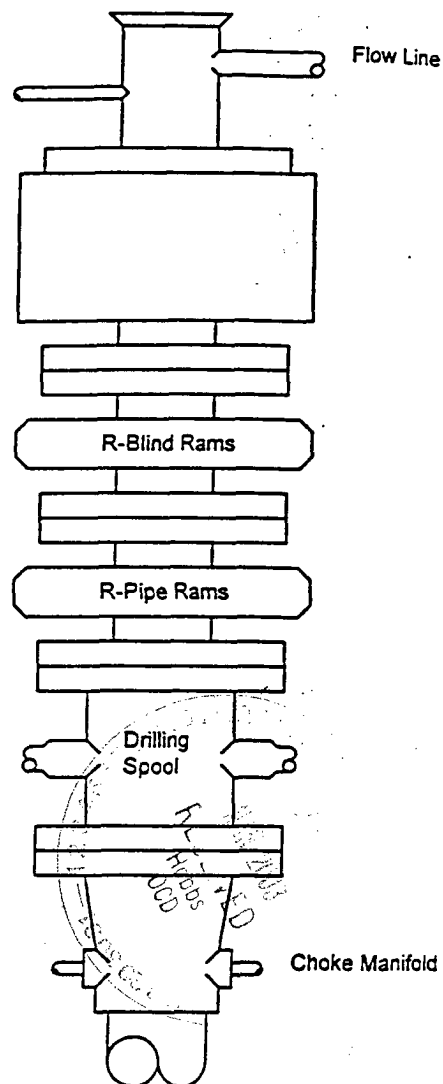
JOHN WEST SURVEYING  
HOBBS, NEW MEXICO  
(505) 393-3117

# BLOWOUT PREVENTER SYSTEM

5000 PS

Fill Line

Flow Line



Type 1500 SERIES  
5000 psi WP

## Choke Manifold Assembly for 5M WP System

