

District I  
1625 N. French Dr., Hobbs, NM 88240

District II  
1301 W. Grand Avenue, Artesia, NM 88210

District III  
1000 Rio Brazos Road, Aztec, NM 87410

District IV  
1220 S. St. Francis Dr., Santa Fe, NM 87505

State of New Mexico  
Energy Minerals and Natural Resources

Form C-101  
May 27, 2004

Oil Conservation Division  
1220 South St. Francis Dr.  
Santa Fe, NM 87505

Submit to appropriate District Office

☐ AMENDED REPORT

**APPLICATION FOR PERMIT TO DRILL, RE-ENTER, DEEPEN, PLUGBACK, OR ADD A ZONE**

<sup>1</sup> Operator Name and Address Yates Petroleum Corporation 105 S. 4 <sup>th</sup> Street Artesia, NM 88210		<sup>2</sup> OGRID Number 025575
		<sup>3</sup> API Number 30-025-27125
<sup>4</sup> Property Code 25301	<sup>5</sup> Property Name Judson AUU State Com	<sup>6</sup> Well No. 1
<sup>9</sup> Proposed Pool 1 Wildcat; Wolfcamp		<sup>10</sup> Proposed Pool 2

**7 Surface Location**

UL or lot no. L	Section 26	Township 10S	Range 34E	Lot Idn	Feet from the 1980	North/South line South	Feet from the 660	East/West line West	County Lea
--------------------	---------------	-----------------	--------------	---------	-----------------------	---------------------------	----------------------	------------------------	---------------

**8 Proposed Bottom Hole Location If Different From Surface**

UL or lot no.	Section	Township	Range	Lot Idn	Feet from the	North/South line	Feet from the	East/West line	County
---------------	---------	----------	-------	---------	---------------	------------------	---------------	----------------	--------

**Additional Well Information**

<sup>11</sup> Work Type Code P	<sup>12</sup> Well Type Code G	<sup>13</sup> Cable/Rotary NA	<sup>14</sup> Lease Type Code S	<sup>15</sup> Ground Level Elevation 4175'
<sup>16</sup> Multiple N	<sup>17</sup> Proposed Depth NA	<sup>18</sup> Formation Devonian	<sup>19</sup> Contractor NA	<sup>20</sup> Spud Date ASAP
Depth to Groundwater		Distance from nearest fresh water well		Distance from nearest surface water
Pit: Liner Synthetic <input type="checkbox"/> _____mils thick Clay <input type="checkbox"/> Pit Volume: _____bbls Drilling Method:				
Closed-Loop System <input checked="" type="checkbox"/> Fresh Water <input type="checkbox"/> Brine <input type="checkbox"/> Diesel/Oil-based <input type="checkbox"/> Gas/Air <input type="checkbox"/>				

**21 Proposed Casing and Cement Program**

Hole Size	Casing Size	Casing weight/foot	Setting Depth	Sacks of Cement	Estimated TOC

<sup>22</sup> Describe the proposed program. If this application is to DEEPEN or PLUG BACK, give the data on the present productive zone and proposed new productive zone. Describe the blowout prevention program, if any. Use additional sheets if necessary.

Yates Petroleum plans to workover and possibly recompleate this well as follows:

Set CIBP @ 12,000' w/35' cement. Set CIBP @ 11,580' w/35' cement. Set CIBP @ 10,690' w/35' cement. Perforate Penn 9958-9962'. Stimulate as needed. Evaluate and possibly perforate Penn 9984-9994'. Stimulate as needed. Plan to evaluate this zone, possibly plan to plug back and recompleate to Wolfcamp. Set CIBP @ 9940' w/35' cement. Perforate 9300-9306'. Stimulate as needed.

**Permit Expires 2 Years From Approval**

**Date Unless ~~Drilling~~ Underway**

**Plugback**

<sup>23</sup> I hereby certify that the information given above is true and complete to the best of my knowledge and belief. I further certify that the drilling pit will be constructed according to NMOCD guidelines ☐, a general permit ☐, or an (attached) alternative OCD-approved plan ☐.

Signature: *Allison Barton*

Printed name: Allison Barton

Title: Regulatory Compliance Technician

E-mail Address:

Date 10/08/08

Phone: (575) 748-1471

**OIL CONSERVATION DIVISION**

Approved by:

Title: **PETROLEUM ENGINEER**

Approval Date:

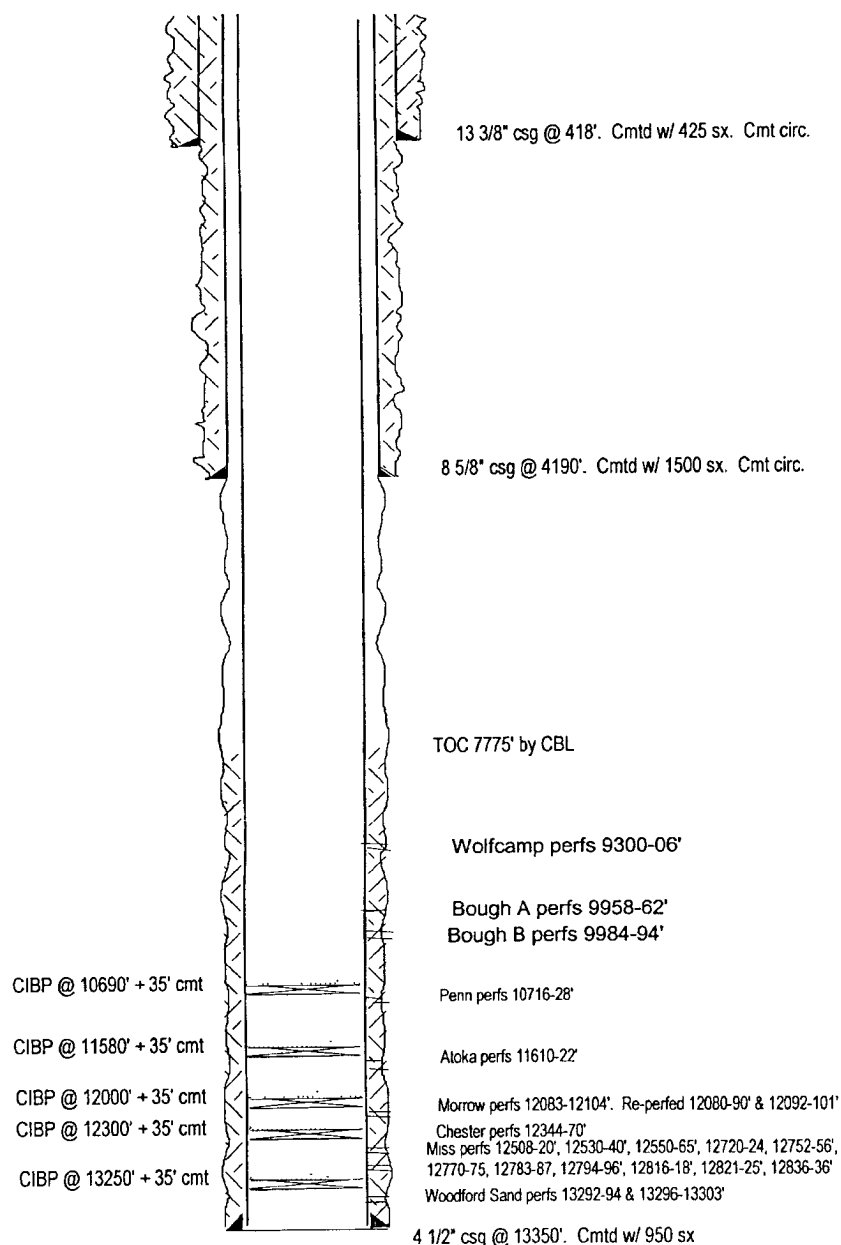
Expiration Date:

Conditions of Approval Attached ☐

Well Name: Judson AUU State No. 1 Field: \_\_\_\_\_  
 Location: 1980' FSL & 660' FWL Sec. 26-10S-34E. Lea Co, NM  
 GL: 4175' Zero: \_\_\_\_\_ AGL: \_\_\_\_\_ KB: 4186'  
 Spud Date: \_\_\_\_\_ Completion Date: \_\_\_\_\_  
 Comments: YPC Re-entry of MWJ Prod. Co. State MG #26-1

Casing Program	
Size/Wt/Grade/Conn	Depth Set
13 3/8" 48#	418'
8 5/8" 24 & 32#	4190'
4 1/2" 11.6# HCP 110	13350'

### PROPOSED CONFIGURATION

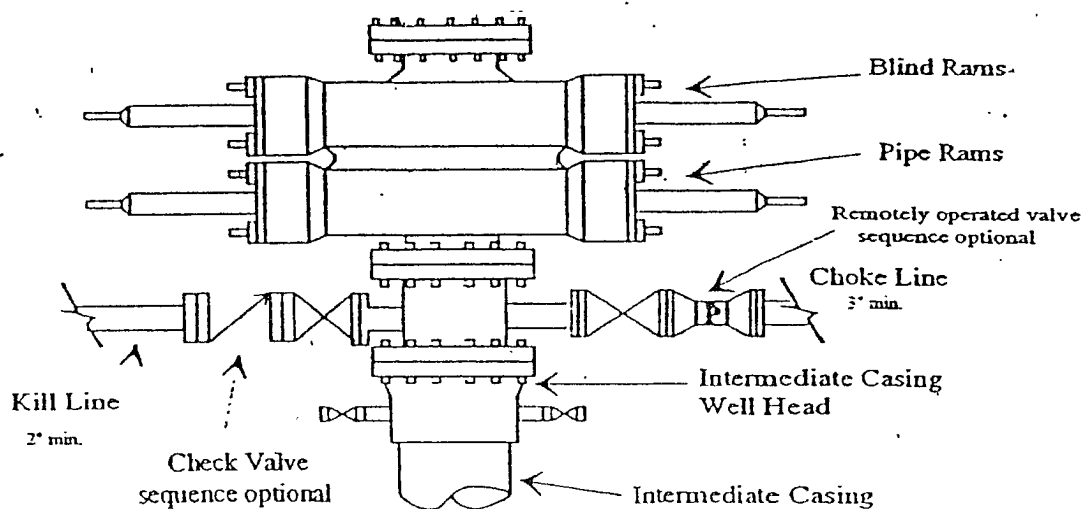


SKETCH NOT TO SCALE

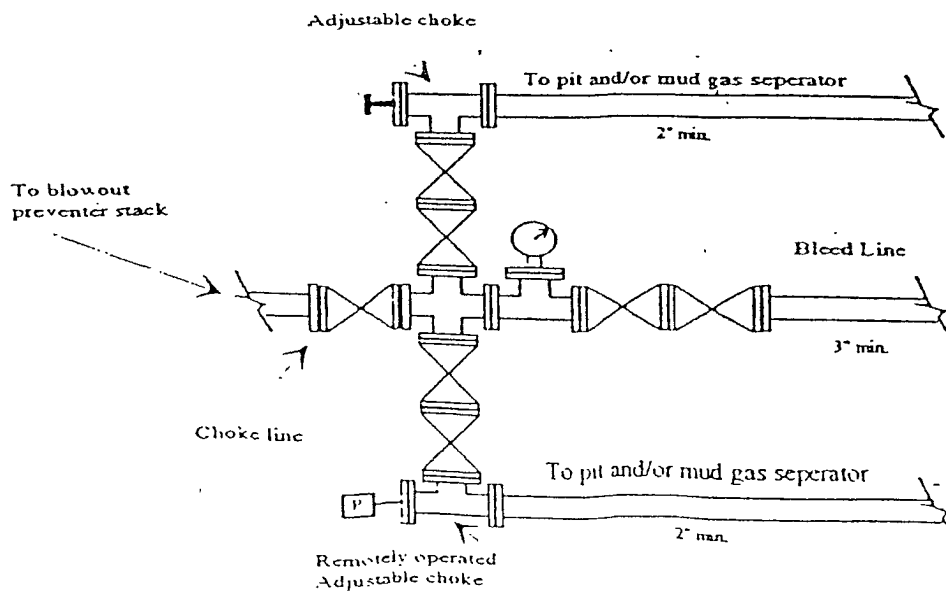
DATE: 9/30/08 JUDSONH

# Yates Petroleum Corporation

## Typical 3,000 psi Pressure System Schematic



Typical 3,000 psi choke manifold assembly with at least these minimum features



**District I**  
1625 N. French Dr., Hobbs, NM 88240

**District II**  
**1301 W. Grand Avenue, Artesia, NM 88210**

**District III**  
1000 Rio Brazos Rd., Aztec, NM 87410

**District IV**  
**1220 S. St. Francis Dr., Santa Fe, NM 87505**

State of New Mexico  
Energy, Minerals & Natural Resources Department  
OIL CONSERVATION DIVISION  
1220 South St. Francis Dr.  
Santa Fe, NM 87505

Form C-102

Revised June 10, 2003

Submit to Appropriate District Office

State Lease - 4 Copies

Fee Lease - 3 Copies

☐ AMENDED REPORT

## WELL LOCATION AND ACREAGE DEDICATION PLAT

<sup>1</sup> API Number <b>30-025-27125</b>	<sup>2</sup> Pool Code	<sup>3</sup> Pool Name <b>Wildcat; Wolfcamp</b>
<sup>4</sup> Property Code <b>25301</b>	<sup>5</sup> Property Name <b>Judson AUU State Com</b>	
<sup>7</sup> OGRID No. <b>025575</b>	<sup>8</sup> Operator Name <b>Yates Petroleum Corporation</b>	<sup>6</sup> Well Number <b>1</b>
		<sup>9</sup> Elevation <b>4175' GR</b>

## <sup>10</sup> Surface Location


UL or lot no.	Section	Township	Range	Lot Idn	Feet from the	North/South line	Feet from the	East/West line	County
L	26	10S	34E		1980	South	660	West	Lea

<sup>11</sup> Bottom Hole Location If Different From Surface

UL or lot no.	Section	Township	Range	Lot Idn	Feet from the	North/South line	Feet from the	East/West line	County
---------------	---------	----------	-------	---------	---------------	------------------	---------------	----------------	--------

<sup>12</sup> Dedicated Acres 320	<sup>13</sup> Joint or Infill	<sup>14</sup> Consolidation Code	<sup>15</sup> Order No.
--------------------------------------	-------------------------------	----------------------------------	-------------------------

NO ALLOWABLE WILL BE ASSIGNED TO THIS COMPLETION UNTIL ALL INTERESTS HAVE BEEN CONSOLIDATED OR A NON-STANDARD UNIT HAS BEEN APPROVED BY THE DIVISION

<p>16</p> <p>VO-5691</p>		<p>17</p> <p><b>OPERATOR CERTIFICATION</b></p> <p><i>I hereby certify that the information contained herein is true and complete to the best of my knowledge and belief.</i></p> <p></p> <p>Signature</p> <p>Allison Barton</p> <p>Printed Name</p> <p>Regulatory Compliance Technician</p> <p>Title and E-mail Address</p> <p>Date</p> <p>10/08/08</p>
<p>660'</p> <p>1980'</p> <p>VA-2112</p>		<p>18</p> <p><b>SURVEYOR CERTIFICATION</b></p> <p><i>I hereby certify that the well location shown on this plat was plotted from field notes of actual surveys made by me or under my supervision, and that the same is true and correct to the best of my belief.</i></p> <p>Date of Survey</p> <p>Signature and Seal of Professional Surveyor</p> <p>Certificate Number</p>