

DISTRICT I
1626 N. French Dr., Hobbs, NM 88240

DISTRICT II
811 South First, Artesia, NM 88210

DISTRICT III
1000 Rio Brazos Rd., Aztec, NM 87410

DISTRICT IV
2040 South Pacheco, Santa Fe, NM 87505

Energy, Minerals and Natural Resources Department

Instruction on back
Submit to Appropriate District Office
State Lease - 4 Copies
Fee Lease - 3 Copies

OIL CONSERVATION DIVISION P.O. Box 2088 Santa Fe, New Mexico 87504-2088

☐ AMENDED REPORT

WELL LOCATION AND ACREAGE DEDICATION PLAT

API Number 30-025-37469	Pool Code 97349	Pool Name Ranger Lake North	Well Number 4
Property Code 33253	Property Name WILLIE STATE UNIT		Elevation 4139
GRID No. 025575	Operator Name YATES PETROLEUM CORPORATION		

Surface Location

UL or lot No.	Section	Township	Range	Lot Idn	Feet from the	North/South line	Feet from the	East/West line	County
C	6	12S	35E		860	NORTH	1980	WEST	LEA

Bottom Hole Location If Different From Surface

UL or lot No.	Section	Township	Range	Lot Idn	Feet from the	North/South line	Feet from the	East/West line	County

Dedicated Acres	Joint or Infill	Consolidation Code	Order No.
308.1			

NO ALLOWABLE WILL BE ASSIGNED TO THIS COMPLETION UNTIL ALL INTERESTS HAVE BEEN CONSOLIDATED
OR A NON-STANDARD UNIT HAS BEEN APPROVED BY THE DIVISION

OPERATOR CERTIFICATION

I hereby certify the the information
contained herein is true and complete to the
best of my knowledge and belief.

Clyton R. May
Signature
CLYTON R. MAY
Printed Name
REGULATORY AGENT
Title
1/21/09
Date

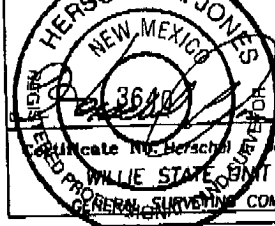
SURVEYOR CERTIFICATION

I hereby certify that the well location shown
on this plat was plotted from field notes of
actual surveys made by me or under my
supervision, and that the same is true and
correct to the best of my belief.

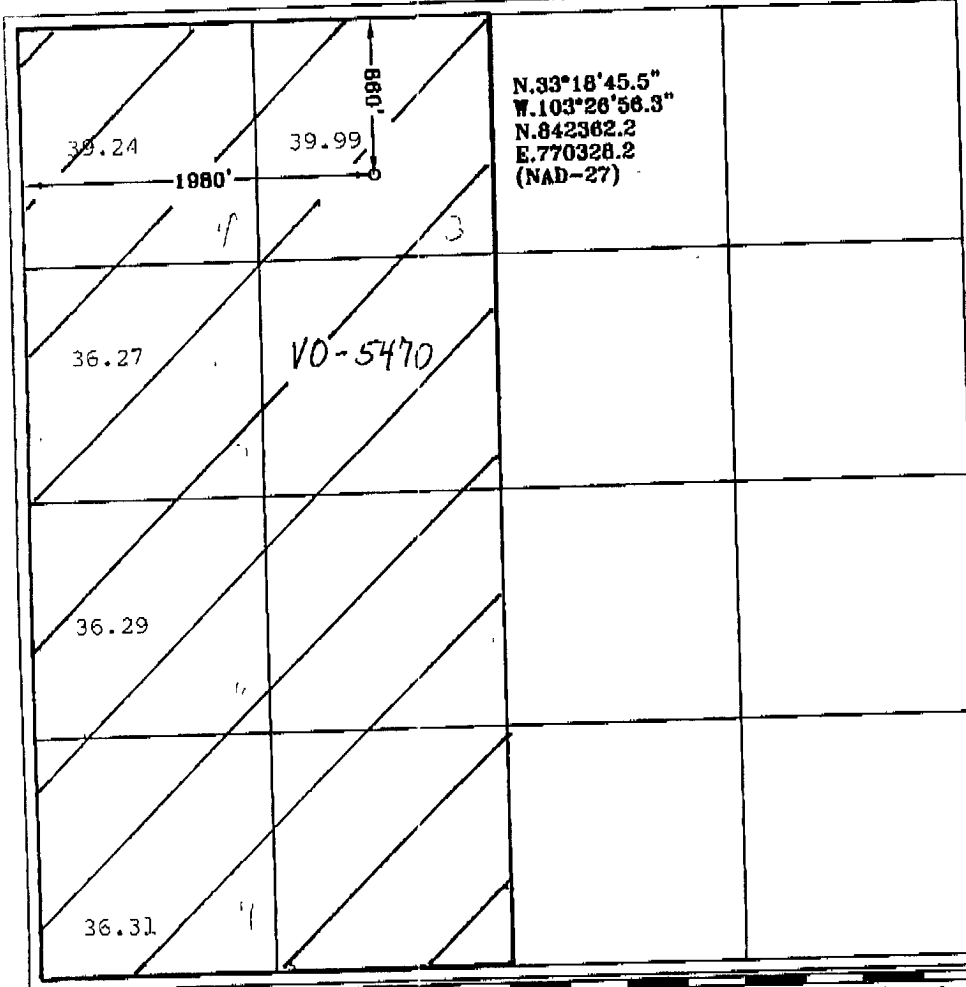
9/13/2005

Date Surveyed

Signature & Seal of
Professional Surveyor



Certificate No. 3640
WILLIE STATE UNIT 4
CHERRIL SURVEYING COMPANY



0 330' 660' 990' 1320' 1650' 1980' 2310' 2640' 2970' 3300' 0'