

District I  
1625 N. French Dr., Hobbs, NM 88240  
District II  
1301 W. Grand Avenue, Artesia, NM 88210  
District III  
1000 Rio Brazos Road, Aztec, NM 87410  
District IV  
1220 S. St. Francis Dr., Santa Fe, NM 87505

State of New Mexico  
Energy Minerals and Natural Resources

Form C-101  
June 16, 2008

Oil Conservation Division  
1220 South St. Francis Dr.  
Santa Fe, NM 87505

Submit to appropriate District Office

☐ AMENDED REPORT

APPLICATION FOR PERMIT TO DRILL, RE-ENTER, DEEPEN, PLUGBACK, OR ADD A ZONE

Operator Name and Address PURE ENERGY OPERATING, INC. 153 TREELINE PARK SUITE 220 SANANTONIO, TEXAS 78209		OGRID Number 236435
Property Code 37583		Property Name LOVINGTON "24" STATE
Proposed Pool 1 LOVINGTON SHOE BAR - UPPER PENN NE		Well No. 24-1
Proposed Pool 2		

Surface Location									
UL or lot no. N	Section 24	Township 16S	Range R36E	Lot Idn	Feet from the 715'	North/South line SOUTH	Feet from the 1885'	East/West line WEST	County LEA

Proposed Bottom Hole Location If Different From Surface									
UL or lot no.	Section	Township	Range	Lot Idn	Feet from the	North/South line	Feet from the	East/West line	County

Additional Well Information				
Work Type Code N	Well Type Code O	Cable/Rotary ROTARY	Lease Type Code S	Ground Level Elevation 3934' GL
Multiple NO	Proposed Depth 11,300'	Formation STRAWN	Contractor PATTERSON	Spud Date WHEN APPROVED

Proposed Casing and Cement Program					
Hole Size	Casing Size	Casing weight/foot	Setting Depth	Sacks of Cement	Estimated TOC
26"	20"	Conductor	40'	Redi-mix	Surface
17 1/2"	13 3/8"	48#	500'	500 Sx.	Surface
11"	8 5/8"	32#	4400'	950 Sx	Surface
7 7/8"	5 1/2"	17#	11,300'	2200 Sx.	4200' TOC

Describe the proposed program. If this application is to DEEPEN or PLUG BACK, give the data on the present productive zone and proposed new productive zone. Describe the blowout prevention program, if any. Use additional sheets if necessary.

RECEIVED

JAN 30 2009

HOBBSOCD

SEE ATTACHED SHEET

Permit Expires 2 Years From Approval  
Date Unless Drilling Underway

I hereby certify that the information given above is true and complete to the best of my knowledge and belief.		OIL CONSERVATION DIVISION	
Signature: Joe T. Janica		Approved by: [Signature]	
Printed name: Joe T. Janica		Title: PETROLEUM ENGINEER	
Title: Permit Eng.		Approval Date: FEB 06 2009	
E-mail Address: joejanica@valornet.com		Expiration Date:	
Date: 01/29/09	Phone: 575-391-8503	Conditions of Approval Attached <input type="checkbox"/>	

1. Drill 26" hole to 40'. Set 40' of 20" conductor pipe and cement to surface with redi-mix.
2. Drill 17½" hole to 500'. Run and set 500' of 13 3/8" 48# H-40 ST&C casing. Cement with 500 Sx. of Class "C" cement + 2% CaCl, + ¼# Flocele/Sx circulate cement to surface.
3. Drill 11" hole to 4400'. Run and set 4400' of 8 5/8" casing as follows: 800' of 8 5/8" 32# HCK ST&C, 3600' of 8 5/8" 32# J-55 ST&C casing. Cement with 720 Sx. of Class "C" cement + additives, tail in with 200 Sx. of Class "C" cement + additives. Circulate cement to surface.
4. Drill 7 7/8" hole to 11,300'. Run and set 11,300' of 5½" 17# P-110 LT&C casing. Cement in two stages. DV Tool at 8450'±. Cement 1st stage with 1100Sx. of Class "H" Premium Plus cement + additives, (TOC 8450'±). Cement 2nd stage with 1100 Sx. of Class "C" cement + additives, estimate top of cement 4200'.

DISTRICT I  
1625 N. French Dr., Hobbs, NM 88240

DISTRICT II  
1301 W. Grand Avenue, Artesia, NM 88210

DISTRICT III  
1000 Rio Brazos Rd., Aztec, NM 87410

DISTRICT IV  
1220 S. St. Francis Dr., Santa Fe, NM 87505

State of New Mexico  
Energy, Minerals and Natural Resources Department

Form C-102  
Revised October 12, 2005

Submit to Appropriate District Office  
State Lease - 4 Copies  
Fee Lease - 3 Copies

**OIL CONSERVATION DIVISION**  
1220 South St. Francis Dr.  
Santa Fe, New Mexico 87505

**WELL LOCATION AND ACREAGE DEDICATION PLAT**

☐ AMENDED REPORT

API Number <b>30-025-39339</b>	Pool Code 40760	Pool Name LOVINGTON UPPER PENN-NORTHEAST
Property Code <b>37583</b>	Property Name SOUTH LOVINGTON "24" STATE	Well Number 21
GRID No. 236435	Operator Name PURE ENERGY OPERATING INC.	Elevation 3934'

**Surface Location**

UL or lot No.	Section	Township	Range	Lot Idn	Feet from the	North/South line	Feet from the	East/West line	County
N	24	16 S	36 E		715	SOUTH	1885	WEST	LEA

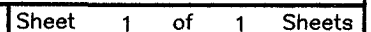
**Bottom Hole Location If Different From Surface**

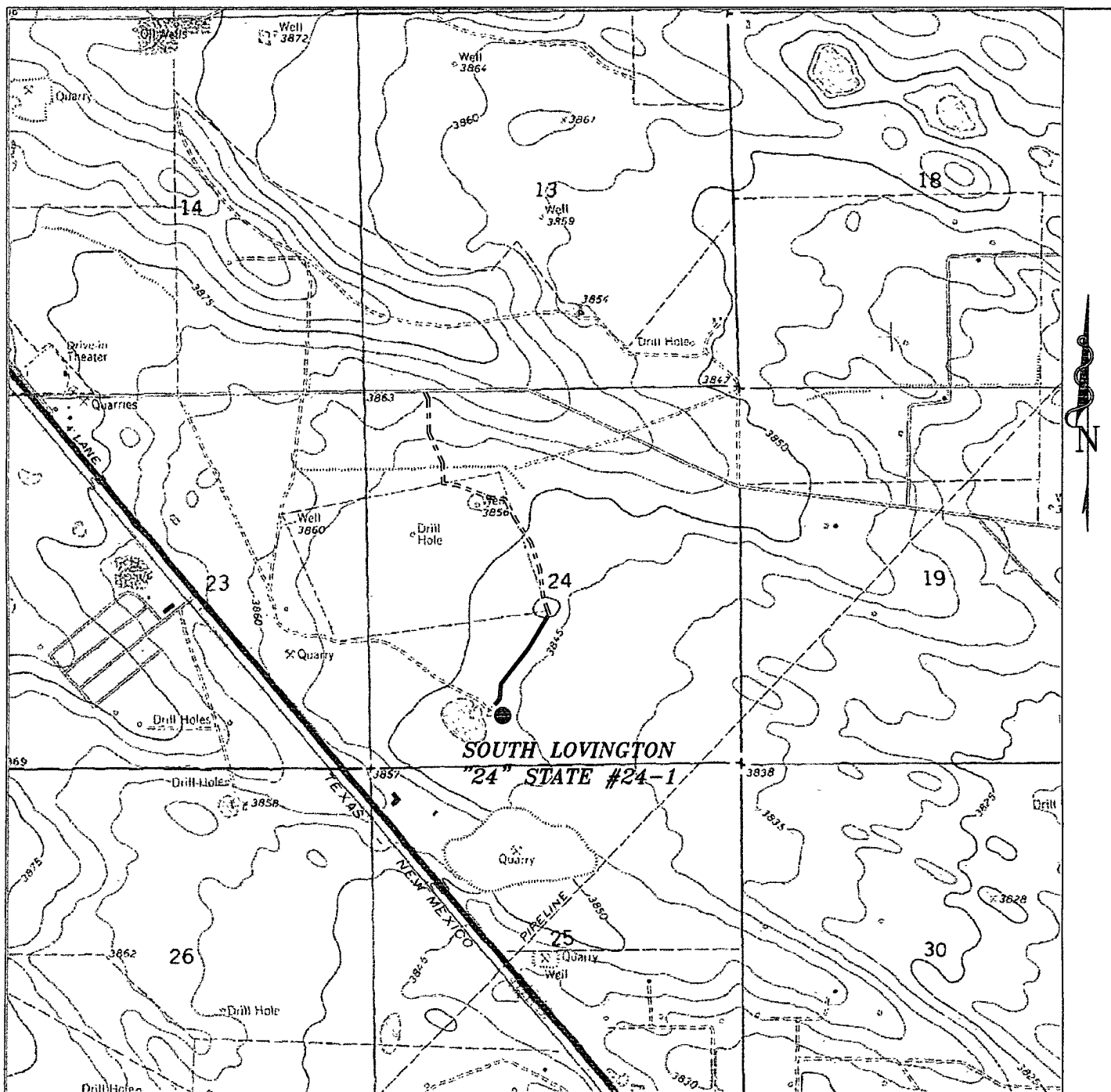
UL or lot No.	Section	Township	Range	Lot Idn	Feet from the	North/South line	Feet from the	East/West line	County
Dedicated Acres 80	Joint or Infill	Consolidation Code	Order No.						

NO ALLOWABLE WILL BE ASSIGNED TO THIS COMPLETION UNTIL ALL INTERESTS HAVE BEEN CONSOLIDATED  
OR A NON-STANDARD UNIT HAS BEEN APPROVED BY THE DIVISION

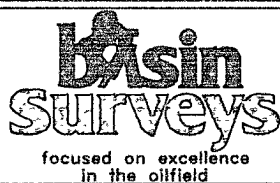
<p><b>SURFACE LOCATION</b>          Lat - N32°54'08.81"          Long - W103°18'37.43"          SPC- N.: 693567.4          E.: 855296.9          (NAD-83)</p> <p>V=7018</p> <p>1885'</p> <p>715'</p>	<p><b>OPERATOR CERTIFICATION</b></p> <p>I hereby certify that the information contained herein is true and complete to the best of my knowledge and belief, and that this organization either owns a working interest or unleased mineral interest in the land including the proposed bottom hole location pursuant to a contract with an owner of such a mineral or working interest, or to a voluntary pooling agreement or a compulsory pooling order heretofore entered by the division.</p> <p><i>Joe T. Janica</i>          Signature Date          Joe T. Janica 02/04/09          Printed Name</p>
	<p><b>SURVEYOR CERTIFICATION</b></p> <p>I hereby certify that the well location shown on this plat was plotted from field notes of actual surveys made by me or under my supervision and that the same is true and correct to the best of my belief.</p> <p>JANUARY 27, 2009</p> <p>Date Surveyed  <i>Gary L. Jones</i>          Signature Seal          Professional Surveyor</p>
	<p>Certificate No. Gary L. Jones 7977</p>
	<p><b>BASIN SURVEYS</b></p>

**N**





**LOVINGTON "24" STATE #24-1**  
 Located at 715' FSL AND 1885' FWL  
 Section 24, Township 16 South, Range 36 East,  
 N.M.P.M., Lea County, New Mexico.



P.O. Box 1786  
 1120 N. West County Rd.  
 Hobbs, New Mexico 88241  
 (575) 393-7316 - Office  
 (575) 392-2206 - Fax  
 basinsurveys.com

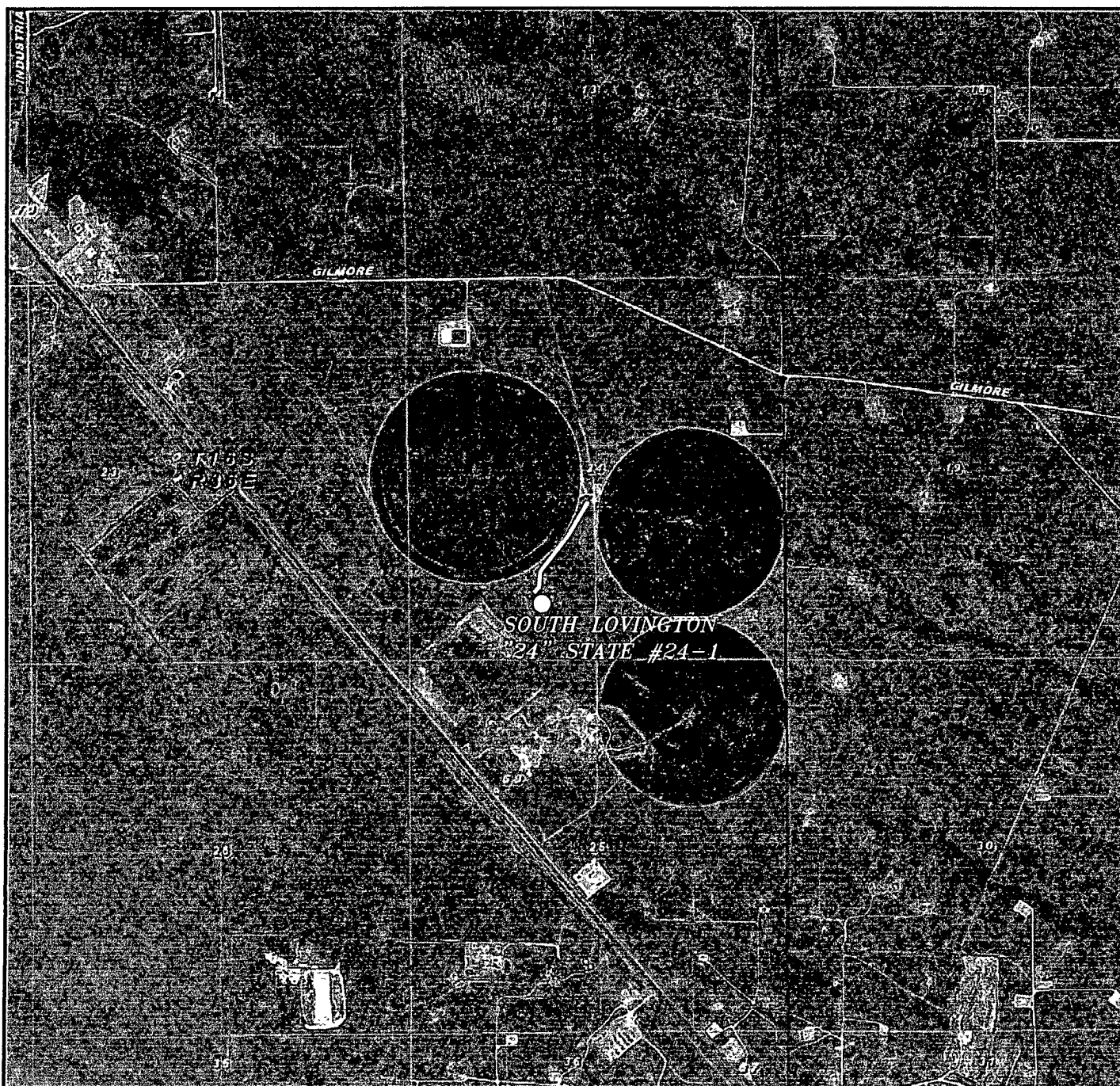
W.O. Number: 21058

Survey Date: 01-26-2009

Scale: 1" = 2000'

Date: 01-27-2009

**PURE ENERGY  
 OPERATING  
 INC.**



LOVINGTON "24" STATE #24-1  
 Located at 715' FSL AND 1885' FWL  
 Section 24, Township 16 South, Range 36 East,  
 N.M.P.M., Lea County, New Mexico.



P.O. Box 1786  
 1120 N. West County Rd.  
 Hobbs, New Mexico 88241  
 (575) 393-7316 - Office  
 (575) 392-2206 - Fax  
 basinsurveys.com

W.O. Number: 21058

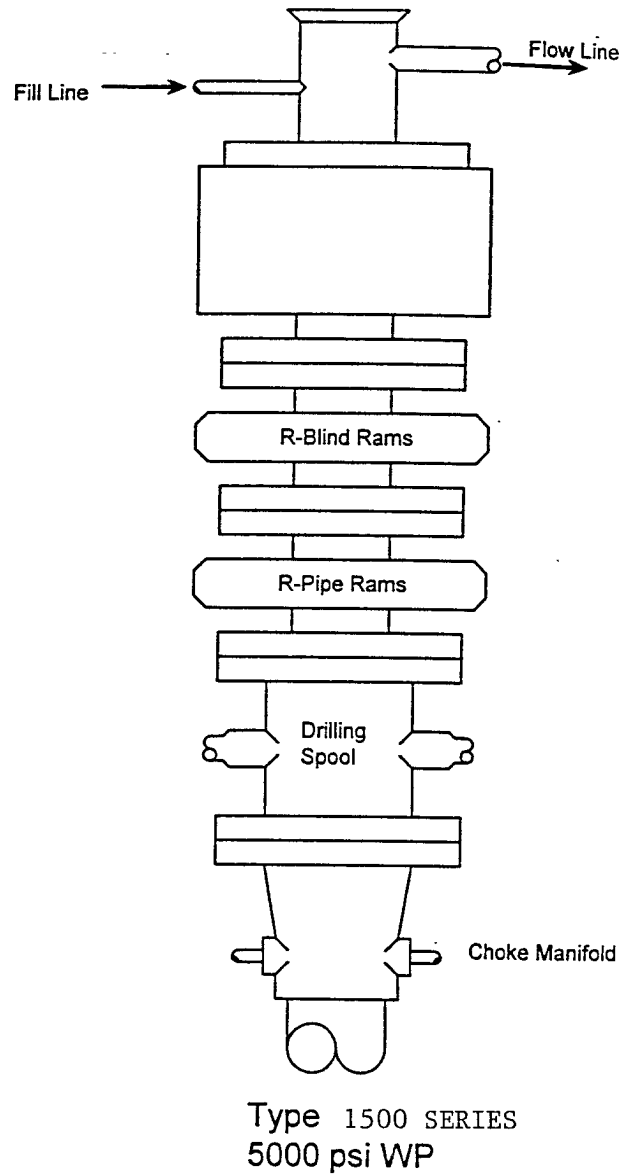
Scale: 1" = 2000'

YELLOW TINT - USA LAND  
 BLUE TINT - STATE LAND  
 NATURAL COLOR - FEE LAND

PURE ENERGY  
 OPERATING  
 INC.

# BLOWOUT PREVENTER SYSTEM

5000 PSI



Choke Manifold Assembly for 5M WP System

